

# Coastline Glider Windows

Unit Features.....	1
Maximum Guidelines.....	3
Section Details .....	4



## Unit Features

**Product Name:** Coastline Glider IZ4 (formerly known as Horizontal Roller)

**Abbreviation:** COGL IZ4, COGL TS IZ4

### Frame:

- .078" typical wall thickness
- 3.000" frame depth
- Optional Color Finishes:
  - Stone White
  - Bronze
  - Ebony
  - Walnut
  - Hazelnut
  - Red Cinnamon
  - English Oak
  - White Kynar
  - Bronze Kynar
  - Black Kynar
  - Custom Colors available

### Handing/Style:

- XO/OX Equal (1/2, 1/2) and Unequal (X 1/3, O 2/3) available
- XOX Equal (1/3, 1/3, 1/3) and Unequal (1/4, 1/2, 1/4) available
- Custom Ratios available

### Screen:

- Fiberglass Mesh

### Divided Lite Options:

- SDL/GBG Patterns:
  - Equal Rectangular
  - Prairie
- Simulated Divided Lite Profiles:
  - 1" Ogee (ext) / 1" Flat (int)
  - 1" Square (ext) / 1" Flat (int)
  - 1" Flat (ext) / 1" Flat (int)
  - 2" Flat (ext) / 2" Flat (int)
- GBG Profile:
  - 13/16" Sightline

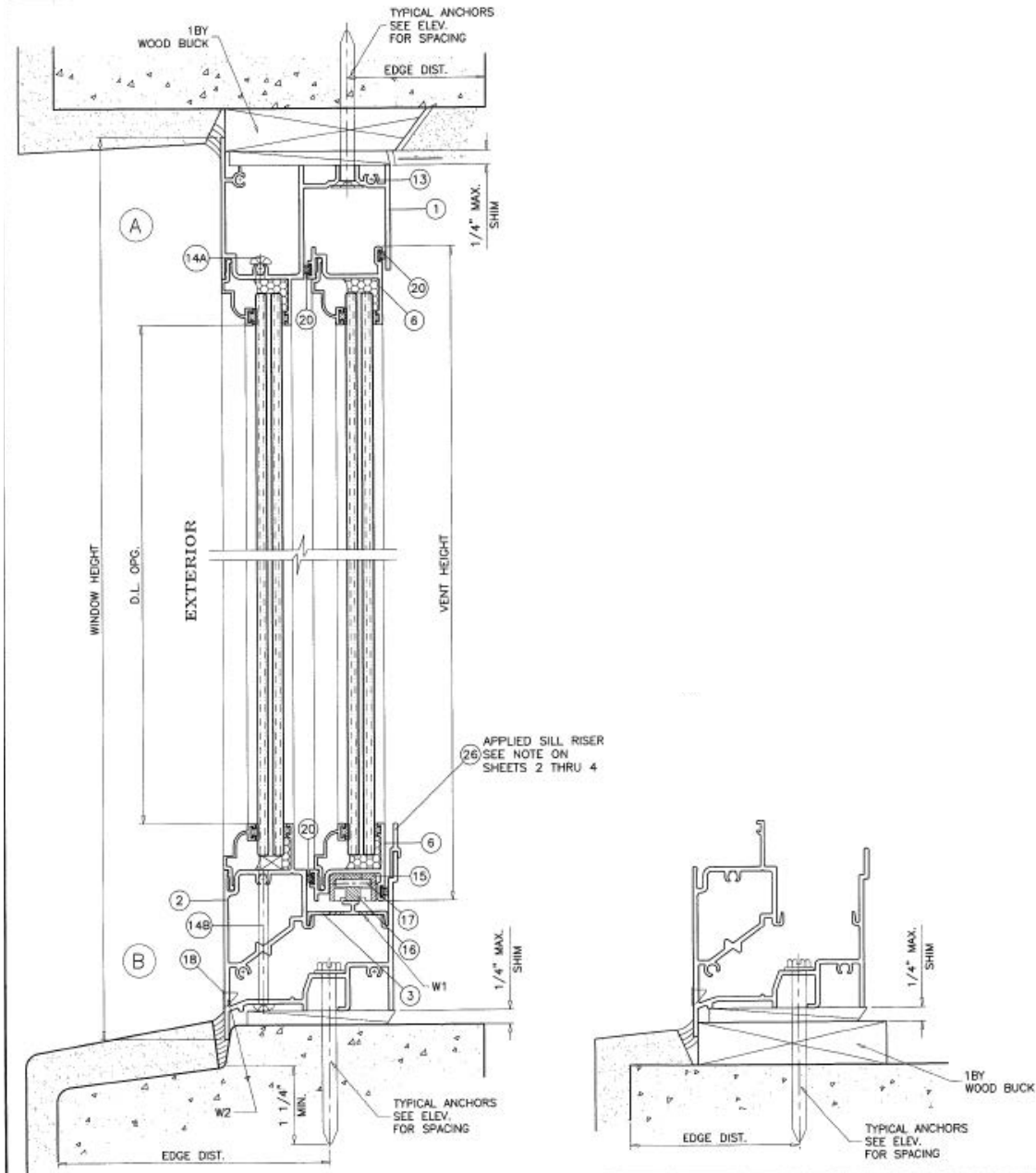
**Glass and Glazing:**

- Glass Options:
  - 5/16" HS Laminated PVB
  - 7/16" HS Laminated PVB or SGP
  - 11/16" Insulated Laminated PVB
- Glass Tint Options
  - Clear
  - Grey Tint
  - Bronze Tint
  - Green Tint
  - Azurelite Blue Tint
  - LoE 366 Clear
  - LoE 366 Grey
  - LoE 366 Bronze
  - LoE 366/ i89
- Options:
  - White Interlayer
  - Pat 62 Obscure
  - Rain
  - Glue Chip
  - Double Tint
  - Neat
  - Ogee Glazing Beads

**Maximum Guidelines**

PRODUCT ABBREVIATION	MAX FRAME AREA (sq ft)	MAX FRAME WIDTH (in)	MAX FRAME HEIGHT (in)	MAX DESIGN PRESSURE (PSF)	OPERATION
COGL IZ4	60.5	139	76	+ 70 / -70	Horizontal Sliding
COGL TS IZ4	76	173	76	+ 60 / -60	Horizontal Sliding
<b>Max Area Cannot Be Exceeded, Reference Florida Product Approvals For Actual Design Pressure</b>					

**Section Details**



**Section Details**

