

Replacement Parts

Specifications and technical data are subject to change without notice.

Numbers listed in () parentheses are metric equivalents in millimeters rounded to the nearest whole number.

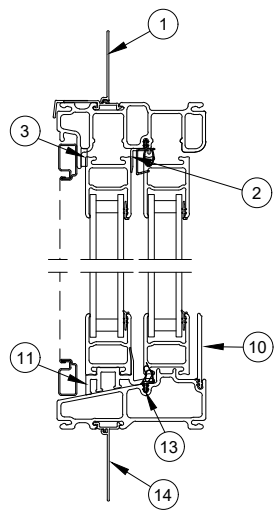
Suggested fasteners are not included and must be ordered separately.

Illustrations are not to scale.

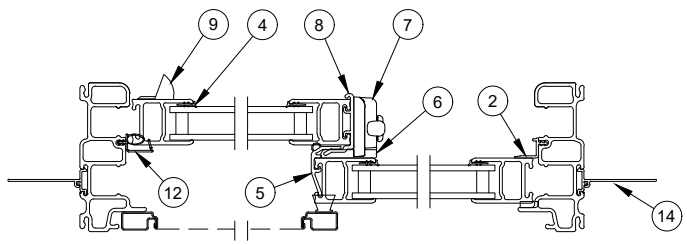
Contents

Product History.....	2
Part Identification - Operator	3
Part Identification - Triple Sash XOX.....	4
Locking Hardware	5
Locking Hardware - Discontinued No Availability (NA)	6
Miscellaneous Parts	8
Miscellaneous Parts - Discontinued Limited Availability (LA).....	11
Miscellaneous Parts - Discontinued No Availability (NA).....	13
Vinyl Parts.....	14
Vinyl Parts - Discontinued Limited Availability (LA).....	19
Vinyl Parts - Discontinued No Availability (NA)	21
Weather Strip	22
Weather Strip - Discontinued Limited Availability (LA)	24
Weather Strip - Discontinued No Availability (NA)	26
Sash, Frame and DLO Charts	27
Sash Replacement.....	28
Screen Replacement.....	29
Screen Parts	30
Screen Parts - Discontinued Limited Availability (LA)	31
Screen Parts - Discontinued No Availability (NA).....	32
Service Items	33

Produced	Unit Type	Features and Changes
2006	Glider	11/2006: Unit features 3/4" double strength insulating Low E II w/argon. GBGs are available in White, Pebble Gray and Bronze. 2" jambs with a 4 9/16" and 6 9/16" extensions. Available with factory applied sheet rock return and field applied J-channel. White interior only with white hardware. Pebble Gray and Stone White exteriors.
2007	Glider	03/2007: Bronze exterior option introduced. 10/2007: V1472 Leveling block replaced with V1562. 11/2007: Evergreen exterior introduced. Changed V1541 frame weather strip from gray to beige.
2008	Glider	03/2008: Cashmere exteriors introduced March 17, 2008.
2009	Glider	03/2009: Ebony exterior introduced frame change. 05/2009: LoE3 366 glass option introduced.
2010	Glider	02/2010: Introduced new hardware finishes: Oil Rubbed Bronze, Satin Nickel PVD, Brass PVD
2011	Glider	05/2011: V1562 Leveling block replaced with V2070; new end cap introduced. 08/2011: Introduced CN60 for the ESGLTS (Glider Triple Sash).
2012	Glider	02/20/2012: Cam Lock part number update. 07/30/2012: Screen pin modification, moved pins from top rail to stile.
2013	Glider	08/26/2013: Added new cam lock and keeper and forced entry clip, improved the jamb weather strip with profile change to jamb weather strip and profile change to jamb weatherstrip (V2312) , sash lead-in replaces operating sash peg.
2015	Glider	02/23/2015: Introduced new nailing fin with drip cap for All Ultrex
2017	Glider	02/27/2017: Implemented the redesign for the All Ultrex Sliding windows. 12/18/2017: Added availability of customer specified lite cut configurations for GBG and to allow any color GBG to the exterior only of standard and special sized units.
2018	Glider	02/26/2018: Introduced Bronze and Ebony Interior option. Standardized to Marvin Exterior Ebony from Essential Exterior Ebony. 12/17/2018: Introduced textured glass types: Reed, Narrow Reed, Rain, Glue Chip and Frost and also colored glass types: Clear, Bronze, Gray and Green.
2019	Glider	01/28/2019: Screen frame was updated.
2020	Glider	01/2020: Protective Glass Film becomes a standard feature across all Essential product lines.
2021	Glider	10/25/2021: Standard screen mesh changed to Marvin Bright View™. See product bulletin 793 for more information.
2022	Glider	06/27/2022: The Essential collection will transition to black weatherstrip (and associated components) for all window and door products, effective June 27th, 2022. Beige weather strip will continue to be available for warranty/service needs. See Product Bulletin 834 for more information. 10/31/2002: Evergreen exterior discontinued. See Product Bulletin 851 for more information.
2023	Glider	02/27/2023: Gunmetal introduced. See Product Bulletin 863 for more information.

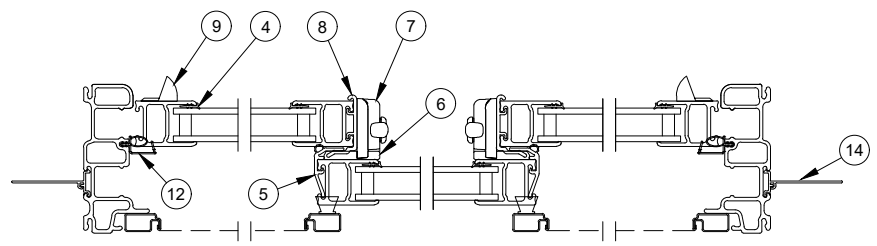
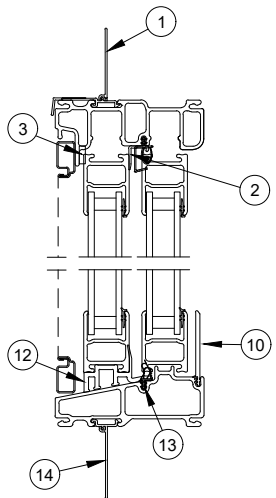


Head Jamb and Sill Detail



Jamb Detail

1. Head Jamb Nail Fin with Drip Cap, V2395 (see Accessories section)
2. Parting Stop, V1311
3. Foam Tape
4. Vinyl Glazing Boot, V1415 (see Accessories section)
5. Stationary Sash Cover, V1749
6. Sash Keeper
7. Sash Lock
8. Operating Sash Cover, V1509
9. Sash Pull
10. Sill Liner, V2697/V3002
11. Leveling Block, V2070/V2859
12. Jamb Weather Strip, V2882
13. Sill Weather Strip, V1452
14. Sill and Jamb Nail Fin, V1428 (see Accessories section)



Jamb Detail

Head Jamb and Sill Detail

1. Head Jamb Nail Fin with Drip Cap, V2395 (see Accessories section)
2. Parting Stop, V1311
3. Foam Tape
4. Vinyl Glazing Boot, V1415 (see Accessories section)
5. Stationary Sash Cover, V1749
6. Sash Keeper
7. Sash Lock
8. Operating Sash Cover, V1509
9. Sash Pull
10. Sill Liner, V2697/V3002
11. Leveling Block, V2070/V2859
12. Jamb Weather Strip, V2882
13. Sill Weather Strip, V1452
14. Sill and Jamb Nail Fin, V1428 (see Accessories section)

Cam Lock

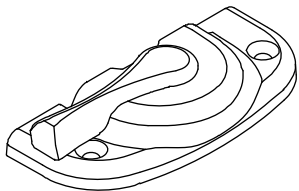
NOTE: If being used on a unit prior to 8/26/2013, both Cam Lock and Keeper will need to be replaced. A Forced Entry Clip will need to be ordered.

Usage dates:

08/26/2013 - present

Color	LH (OX) PN	RH (XO) PN
Stone White	10824022	10824021
Almond Frost	10824024	10824023
Brass	10824026	10824025
Satin Nickel	10824028	10824027
Oil Rubbed Bronze	10824030	10824029
Matte Black	10824034	10824033

Suggested Fasteners	PN
2 - #7-16 x 7/8" flat head screw	
Stone White	10840019
Almond Frost	11840774
Brass	11800787
Satin Nickel	11800796
Oil Rubbed Bronze*	11800794
*Used for Oil Rubbed Bronze and Matte Black	



Keeper

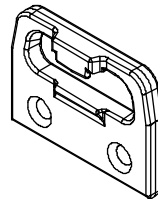
NOTE: If being used on a unit prior to 8/26/2013, both Cam Lock and Keeper will need to be replaced. A Forced Entry Clip will need to be ordered.

Usage dates:

08/26/2013 - present

Color	PN
Stone White	10819040
Almond Frost	10819080
Brass	10819050
Satin Nickel	10819060
Oil Rubbed Bronze	10819070
Matte Black	10819090

Suggested Fasteners	PN
2 - #7-16 x 7/8" flat head screw	
Stone White	10840019
Almond Frost	11840774
Brass	11800787
Satin Nickel	11800796
Oil Rubbed Bronze*	11800794
*Used for Oil Rubbed Bronze and Matte Black	



Cam Lock and Keeper

Includes:

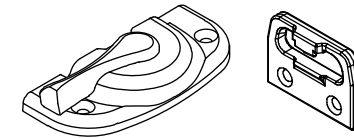
- 1 – Lock
- 1 – Keeper
- 4 – #7-16 x 7/8" flat head screws

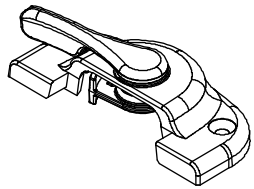
NOTE: If used on a unit prior to 8/26/2013 a Forced Entry Clip will need to be ordered.

Usage dates:

08/26/2013 - present

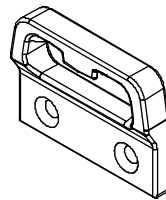
Color	LH (OX) PN	RH (XO) PN
Stone White	11800922	11800921
Almond Frost	11800924	11800923
Brass	11800926	11800925
Satin Nickel	11800928	11800927
Oil Rubbed Bronze	11800930	11800929
Matte Black	11800935	11800934





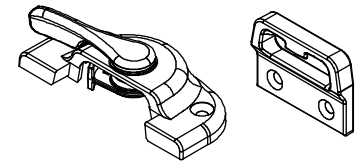
Sash Cam Lock

Usage Dates: 11/2006 to 08/26/2013



Sash Keeper

Usage Dates: 11/2006 to 08/26/2013



Sash Cam Lock and Keeper

Usage Dates: 11/2006 to 08/26/2013

Sash Limiter Kit

NOTE: Used on Glider and Glider Triple Sash

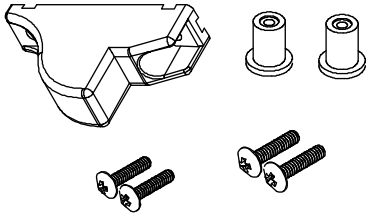
Includes:

- 1 – Sash limiter
- 2 – 6–32 x 1/2" well nut
- 2 – #6–32 x 3/4" Torx pan head screw
- 2 – #6 x 1/2" Torx head machine screw
- 4 – 5/16" hole plugs (included with XOX only)
- 1 – Warning label
- 1 – Instruction

NOTE: Quantities are doubled for the Essential Glider Triple Sash and include 4–5/16" hole plugs.

NOTE: Attach this optional kit per instruction to limit the opening of the sash to less than the standard clear opening.

Color	Handing	PN
Stone White	OX/XO	11880280
	XOX	11880380
Black	OX/XO	11882980
	XOX	11883980



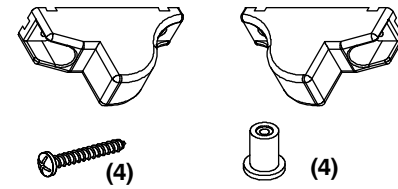
Sash Stop Kit

NOTE: Used on Glider Triple Sash, XOX

Includes:

- 2 – Sash Limiters
- 4 – 6–32x1/2" Well Nut
- 4 – #6–32x3/4" Phillips PH, SW screw
- 1 – Installation Instruction

Color	PN
White	11880132
Black	11880932

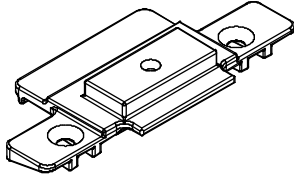


Stationary Header Bracket Kit

Includes:

- 1 – #8-18 X 5/8" Phillips PH AB, SMS screw (11800821)
- 1 – #8-15 X 5/8" Pierce Point, Phillips TH FT screw (Beige -11800862)

Color	PN
Black	11812346

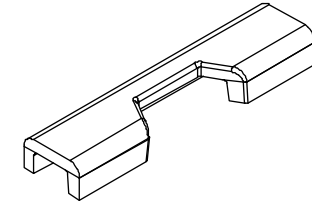


Forced Entry Clip

Usage dates:

08/26/2013 - present

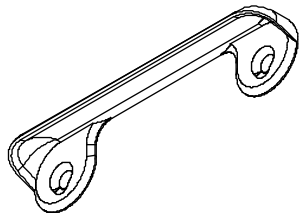
PN
11860289



Sash Pull

Color	PN
Stone White	11860053
Bronze	11861054
Ebony	11861055

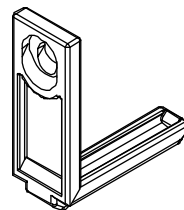
Suggested Fasteners	
2 - #7-16 x 7/8" flat head screw	
Color	PN
Stone White	10840019
Oil Rubbed Bronze	11800794
NOTE: Oil Rubbed Bronze used with Bronze or Ebony.	



Sash Glide Jamb Side

Color	PN
White	10506703
Black	10506742

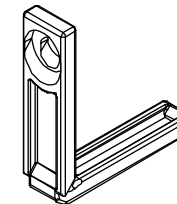
Suggested Fasteners	PN
1 – #8-18 X 5/8" Phillips pan head AB, SMS screw	11800821



Sash Glide Meeting Stile

Color	PN
White	10506730
Black	10506738

Suggested Fasteners	PN
1 – #8-18 X 5/8" Phillips pan head AB, SMS screw	11800821



Leveling Block End Cap

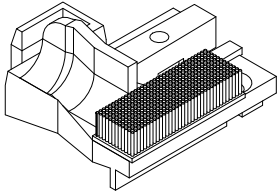
Includes:

1 – End Cap Dust Block

Usage dates:

05/2011 - present

Color	Handing	PN
Black	XO	10700922
	OX	10700923



OX shown

End Cap Kit

Includes:

1 – End Cap Dust Block

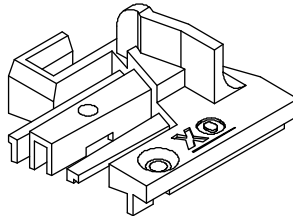
1 – #7 – 16 x 7/8" screw

1 – #7 – 19 x 3/4" screw

Usage dates:

05/2011 - present

Color	Handing	PN
Black	XO	11812248
	OX	11812249



Sash Cam Lock Limiter Kit

Includes:

1 – Sash cam lock limiter

1 – #6 x 1 1/4" Torx pan head screw

1 – Warning label

1 – Instruction

NOTE: 1 kit per lock

Color	PN
Stone White	11880480
Almond Frost	11880481
Brass	11880482
Satin Nickel	11880483
Oil Rubbed Bronze	11880484
Matte Black	11880485

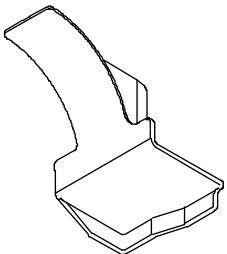


Stationary Header Bracket Cover

Usage dates:

02/27/2017 - present

Color	Handing	PN
Black	XO	10506740
	OX	10506741

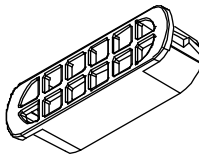


Drain Cover

Usage dates:

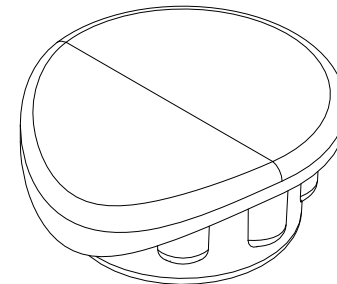
02/27/2017 - present

Color	PN
White	10506704
Black	10506733



Jamb Hole Plug

Color	PN
White	10408344
Ebony	10408345
Bronze	10408346
Gunmetal	10408347



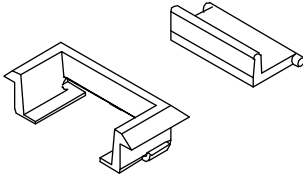
Weep Cover and Flap

Usage dates:

02/27/2017 - present

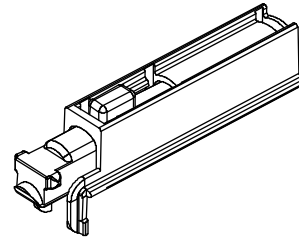
NOTE: These parts will come pre-assembled

Color	PN
Stone White	10506722
Pebble	10506723
Bronze	10506724
Ebony	10506727
Cashmere	10506726
Gunmetal	10506743
*Evergreen	10506725



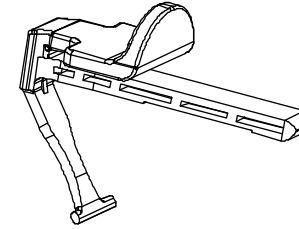
Jamb Stile Tilt Latch

Color	PN
Stone White	11860295
Black	10502134



Tilt Latch-Meeting Stile

Color	PN
Stone White	11869504
Bronze	11869539
Ebony	11869506
Gunmetal	11869501

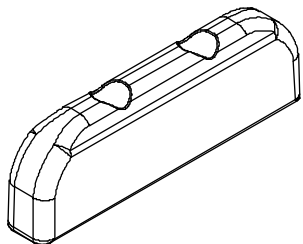


NOTE: *DISC (LA) used prior to 10/317/2022

Stationary Sash Lead-in

Color	PN
White	10502772
Black	10502773

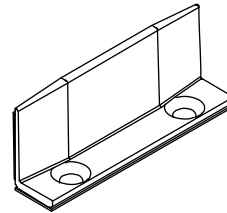
Suggested Fasteners	
2 - #7-16 x 7/8" flat head screw	
Color	PN
Stone White	10840019
Oil Rubbed Bronze	11800794
NOTE: Oil Rubbed Bronze used with Black.	



Sill Bracket, with Tape

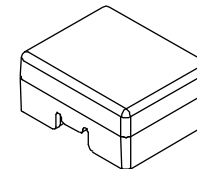
Tape is used for application

Color	PN
White	10506901
Black	10506902



Sash Stop

Color	PN
White	10506721
Black	10506739



Stationary Retainer Bracket

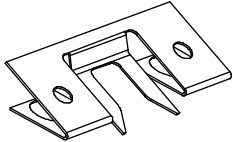
Includes:

- 1 – Bracket
- 2 – Rivet

Usage Dates:

11/2006 - 03/2009

PN
11860312



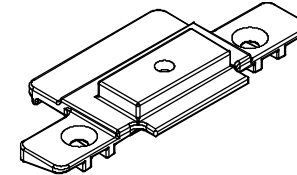
Stationary Header Bracket Kit

Includes:

- 1 – #8-18 X 5/8” Phillips PH AB, SMS screw (11800821)
- 1 – #8-15 X 5/8” Pierce Point, Phillips TH FT screw (Beige-11800862)

Beige used until 06/27/2022

Color	PN
Beige	11812146

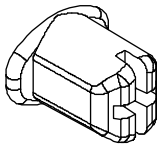


Operating Sash Peg

Usage Dates:

11/2006 - 08/26/2013

Color	PN
Stone White	11860294

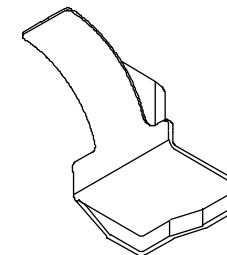


Stationary Header Bracket Cover

Usage dates:

02/27/2017 - 06/27/2022

Color	Handing	PN
Beige	XO	10506732
	OX	10506731

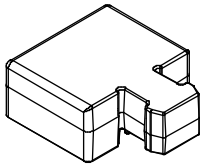


Sash Stop, XO/OX

Usage Dates:

Prior to 01/2017

Color	PN
Stone White	118610

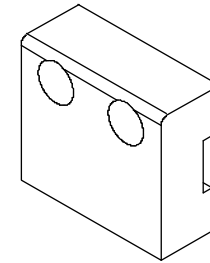


Sash Stop, XOX

Usage Dates:

11/2006 - 08/2011

Color	PN
White	11861150



Leveling Block End Cap

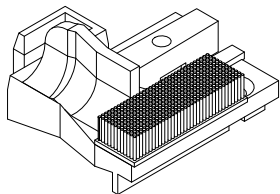
Includes:

1 – End Cap Dust Block

Usage dates:

05/2011 - 06/27/2022

Color	Handing	PN
Beige	XO	10600922
	OX	10600923



OX shown

Leveling Block End Cap Kit

Includes:

1 – End Cap Dust Block

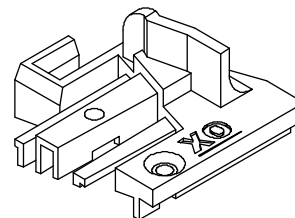
1 – #7 – 16 x 7/8" screw

1 – #7 – 19 x 3/4" screw

Usage dates:

05/2011 - 06/27/2022

Color	Handing	PN
Beige	XO	11812148
	OX	11812149



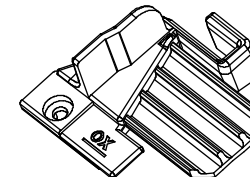
Essential Glider

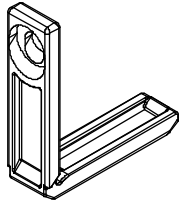
Leveling Block Plug

Usage Dates:

11/2006 - 11/2007

Color	Operation	PN
Gray	XO	NA
	OX	11860298



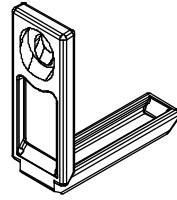


Meeting Stile Glide

Stone White

Usage Dates: Prior to 01/2017

Replace with 10506730

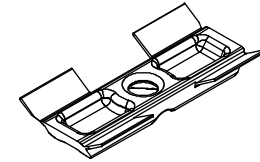


Jamb Stile Glide

Stone White

Usage Dates: Prior to 01/2017

Replace with 10506703

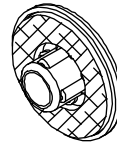


Glide

Stone White

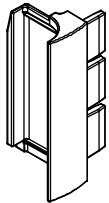
Usage Dates: 11/2006 - 03/2007

Replace with 1 EA 10506703 and 10506730



Jamb Hole Plug

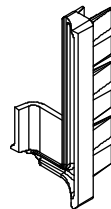
Usage Dates: Prior to 10/2011



Sill Liner Seal

Usage Dates: 09/24/2007 - 02/27/2017

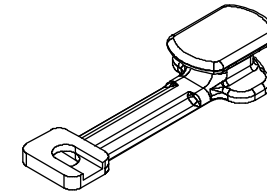
No longer available. Replace with Sill Liner End Cap



Sill Liner Seal

Usage Dates: 04-2006 - 09/2007

No longer available. Replace with current version. Will have to replace sill liner and/or sill filler



Sash Retainer Peg

Usage Dates: 11/2006 - 03/2009

Sill Liner

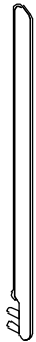
V3002

Usage dates:

12/16/2019 - present

NOTE: Replaces V2846 used 02/27/2017 - 12/15/2019

CN	Length	Color and Part Number		
		Bronze	Ebony	Gunmetal
CN26	28 47/64" (730)	41511026	41511126	41519126
CN28	30 47/64" (781)	41511028	41511128	41519128
CN30	34 47/64" (882)	41511030	41511130	41519130
CN36	40 47/64" (1035)	41511036	41511136	41519136
CN40	46 47/64" (1187)	41511040	41511140	41519140
CN46	52 47/64" (1339)	41511046	41511146	41519146
CN50	58 47/64" (1492)	41511050	41511150	41519150
CN60	70 47/64" (1797)	41511060	41511160	41519160
CN70	82 47/64" (2101)	41511070	41511170	41519170
CN80	94 47/64" (2406)	41511080	41511180	41519180
Lineal	96" (2438)	41511096	41511196	41519196



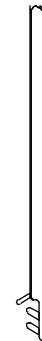
Sill Liner

V2697

Usage dates:

02/27/2017 - present

CN	Length	Stone White PN
CN26	28 47/64" (730)	31511326
CN28	30 47/64" (781)	31511328
CN30	34 47/64" (882)	31511330
CN36	40 47/64" (1035)	31511336
CN40	46 47/64" (1187)	31511340
CN46	52 47/64" (1339)	31511346
CN50	58 47/64" (1492)	31511350
CN60	70 47/64" (1797)	31511360
CN70	82 47/64" (2101)	31511370
CN80	94 47/64" (2406)	31511380
Lineal	96" (2438)	31511396



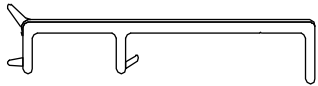
Sill Filler - Picture/Transom

V2844

Usage dates:

02/27/2017 - present

CN	Length	Color and Part Number			
		Stone White	Bronze	Ebony	Gunmetal
CN16	15 3/8" (391)	31512416	31512516	31512616	31519616
CN20	21 3/8" (543)	31512420	31512520	31512620	31519620
CN26	27 3/8" (695)	31512426	31512526	31512626	31519626
CN28	29 3/8" (746)	31512428	31512528	31512628	31519628
CN30	33 3/8" (848)	31512430	31512530	31512630	31519630
CN36	39 3/8" (1000)	31512436	31512536	31512636	31519636
CN40	45 3/8" (1153)	31512440	31512540	31512640	31519640
CN50	57 3/8" (1457)	31512450	31512550	31512650	31519650
CN60	69 3/8" (1762)	31512460	31512560	31512660	31519660
Lineal	144" (3658)	31512499	31512599	31512699	31519699

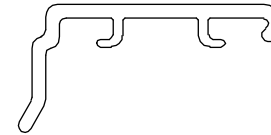


Operator Sash Cover

V1509

Single Lock					
CN	Length	Stone White	Bronze	Ebony	Gunmetal
CN16	15 1/4" (3871)	17043718	15919416	15919316	15999316
CN20	21 1/4" (540)	17043724	15919420	15919320	15999320
CN26	27 1/4" (692)	17043730	15919426	15919326	15999326

Double Lock					
CN	Length	Stone White	Bronze	Ebony	Gunmetal
CN30	33 1/4" (845)	17043836	15919730	15919230	15999030
CN36	39 1/4" (997)	17043842	15919736	15919236	15999036
CN40	45 1/4" (1149)	17043848	15919740	15919240	15999040
CN46	51 1/4" (1302)	17043854	15919746	15919246	15999046
CN50	57 1/4" (1484)	17043860	15919750	15919250	15999050



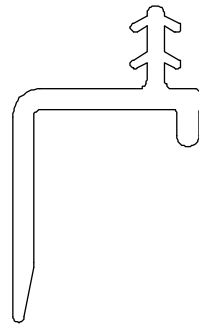
Parting Stop

V1311

NOTE: End fabrications have changed.

Head Jamb					
CN	Length	Color and Part Number			
		Stone White	Bronze	Ebony	Gunmetal
CN26	12 19/32" (320)	17077726	17048826	17049926	17089926
CN30	15 19/32" (396)	17077730	17048830	17049930	17089930
CN36	18 19/32" (472)	17077736	17048836	17049936	17089936
CN40	21 19/32" (548)	17077740	17048840	17049940	17089940
CN46	24 19/32" (625)	17077746	17048846	17049946	17089946
CN50	27 19/32" (701)	17077750	17048850	17049950	17089950
CN60	33 19/32" (853)	17077760	17048860	17049960	17089961
CN60*	33 5/8" (854)	17017760	17058860	17069960	17089060
CN70*	39 5/8" (1007)	17027770	17058870	17069970	17089070
CN80*	45 5/8" (1032)	17027780	17058880	17069980	17089080
*Glider Triple Sash					

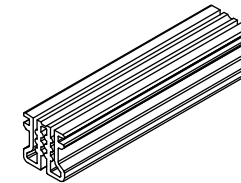
Jamb					
CN	Length	Color and Part Number			
		Stone White	Bronze	Ebony	Gunmetal
CN16	15 9/16" (396)	17012618	17034618	17035618	17085618
CN20	21 9/16" (548)	17012624	17034624	17035624	17085624
CN26	27 9/16" (700)	17012630	17034631	17035630	17085630
CN30	33 9/16" (853)	17012636	17034636	17035636	17085636
CN36	39 9/16" (1005)	17012642	17034642	17035642	17085642
CN40	45 9/16" (1158)	17012648	17034648	17035648	17085648
CN46	51 9/16" (1310)	17012654	17034654	17035654	17085654
CN50	57 9/16" (1462)	17012660	17034660	17035660	17085660
Lineal	96" (2438)	17000696	17034696	17035696	17085696



Block, Balance Tube Channel

V1888

Length	Color	PN
3"	Beige	10600157

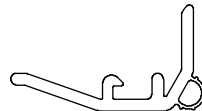


Stationary Sash Cover

V1749

NOTE: Used at Stationary Stile

CN	Length	Black PN	*Beige PN
CN16	15 1/4" (387)	15919016	17005916
CN20	21 1/4" (540)	15919020	17005920
CN26	27 1/4" (692)	15919026	17005926
CN30	33 1/4" (845)	15919030	17005930
CN36	39 1/4" (997)	15919036	17005936
CN40	45 1/4" (1149)	15919040	17005940
CN46	51 1/4" (1302)	15919046	17005946
CN50	57 1/4" (1454)	15919050	17005950



NOTE: *DISC (LA) used prior to 06/27/2022

Leveling Block

V2070/V2859

Usage dates:

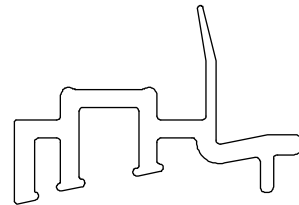
05/2011 - present

NOTE: When replacing leveling blocks for units produced before 05/2011, you will also need to replace the end caps, using the current end caps.

CN	Length	Exterior Color and Part Number									
		Stone White	Pebble	Cashmere	Bronze	Ebony	Gunmetal	Bronze	Ebony	Gunmetal	*Evergreen
		Interior Color and Part Number									
		Stone White					Bronze	Ebony	Gunmetal	Stone White	
CN26	14" (356)	11202126	11203226	11206526	11304426	11307626	11387626	11308626	11309626	11389626	11306426
CN30	17" (432)	11202130	11203230	11206530	11304430	11307630	11387630	11308630	11309630	11389630	11306430
CN36	20" (508)	11202136	11203236	11206536	11304436	11307636	11387636	11308636	11309636	11389636	11306436
CN40	23" (584)	11202140	11203240	11206540	11304440	11307640	11387640	11308640	11309640	11389640	11306440
CN46	26" (660)	11202146	11203246	11206546	11304446	11307646	11387646	11308646	11309646	11389646	11306446
CN50	29" (737)	11202150	11203250	11206550	11304450	11307650	11387650	11308650	11309650	11389650	11306450
CN60	35" (889)	11202160	11203260	11206560	11304460	11307660	11387660	11308660	11309660	11389660	11306460
CN60*	36 27/32" (636)	11200160	11200260	11200560	11300460	11301660	11381660	11302660	11303660	11383660	11300660
CN70*	42 27/32" (1088)	11201170	11201270	11201570	11300470	11301670	11381670	11302670	11303670	11383670	11300670
CN80*	48 27/32" (1240)	11201180	11201280	11201580	11300480	11301680	11381680	11302680	11303680	11383680	11300680
Lineal	96" (2438)	11201199	11201299	11201599	11305196	11307196	11387196	11308196	11309196	11389196	11306196
*Glider Triple Sash											

Suggested Fasteners	PN
2-#7 x 3/4" Phillips, pan head, full thread screws	118036

NOTE: *DISC (LA) used prior to 10/317/2022



Leveling Block, WOCD

V2070/V2859

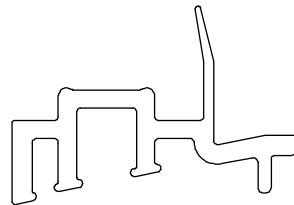
Usage dates:

05/2011 - present

NOTE: When replacing leveling blocks for units produced before 05/2011, you will also need to replace the end cap.

Operation	CN	Length	Exterior Color and Part Number									
			Stone White	Pebble	Cashmere	Bronze	Ebony	Gunmetal	Bronze	Ebony	Gunmetal	*Evergreen
			Interior Color and Part Number									
			Stone White					Bronze	Ebony	Gunmetal	Stone White	
XO	CN26	14" (356)	11221127	11222227	11223327	11224427	11226627	11286627	11227727	11228827	11288827	11225527
	CN30	17" (432)	11221131	11222231	11223331	11224431	11226631	11286631	11227731	11228831	11288831	11225531
	CN36	20" (508)	11221137	11222237	11223337	11224437	11226637	11286637	11227737	11228837	11288837	11225537
	CN40	23" (584)	11221141	11222241	11223341	11224441	11226641	11286641	11227741	11228841	11288841	11225541
	CN46	26" (660)	11221147	11222247	11223347	11224447	11226647	11286647	11227747	11228847	11288847	11225547
	CN50	29" (737)	11221151	11222251	11223351	11224451	11226651	11286651	11227751	11228851	11288851	11225551
	CN60	35" (889)	11221161	11222261	11223361	11224461	11226661	11286661	11227761	11228861	11288861	11225561
OX	CN26	14" (356)	11221126	11222226	11223326	11224426	11226626	11286626	11227726	11228826	11288826	11225526
	CN30	17" (432)	11221130	11222230	11223330	11224430	11226630	11286630	11227730	11228830	11288830	11225530
	CN36	20" (508)	11221136	11222236	11223336	11224436	11226636	11286636	11227736	11228836	11288836	11225536
	CN40	23" (584)	11221140	11222240	11223340	11224440	11226640	11286640	11227740	11228840	11288840	11225540
	CN46	26" (660)	11221146	11222246	11223346	11224446	11226646	11286646	11227746	11228846	11288846	11225546
	CN50	29" (737)	11221150	11222250	11223350	11224450	11226650	11286650	11227750	11228850	11288850	11225550
	CN60	35" (889)	11221160	11222260	11223360	11224460	11226660	11286660	11227760	11228860	11288860	11225560
Triple Sash	CN60	36 27/32" (636)	11331160	11332260	11333360	11334460	11336660	11386660	11337760	11338860	11388860	11335660
	CN70	42 27/32" (1088)	11331170	11332270	11333370	11334470	11336670	11386670	11337770	11338870	11388870	11335570
	CN80	48 27/32" (1240)	11331180	11332280	11333380	11334480	11336680	11386680	11337780	11338880	11388880	11335780

NOTE: *DISC (LA) used prior to 10/31/2022



Sill Liner

V1552

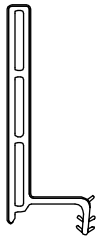
Usage dates:

09/24/2007 - 02/27/2017

NOTE: For units produced before 02/27/17 also replace sill liner end cap.

NOTE: For units produced between 8/26/13 and 02/27/17 also replace sill liner tape.

CN	Length	Stone White PN
CN16	15 15/64" (387)	31511216
CN20	21 15/64" (539)	31511220
CN26	27 15/64" (692)	31511226
CN30	33 15/64" (844)	31511230
CN36	39 15/64" (997)	31511236
CN40	45 15/64" (1149)	31511240
CN46	51 15/64" (1301)	31511246
CN50	57 15/64" (1454)	31511250
CN60	69 15/64" (1759)	31511260
CN70	81 15/64" (2063)	31511280
CN80	93 15/64" (2368)	31511280
Lineal	96" (2438)	31511296



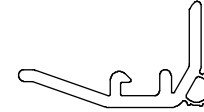
Stationary Sash Cover

V1749

Usage dates:

Prior to 06/27/2022

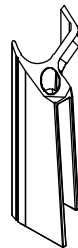
CN	Length	Beige PN
CN16	15 1/4" (387)	17005916
CN20	21 1/4" (540)	17005920
CN26	27 1/4" (692)	17005926
CN30	33 1/4" (845)	17005930
CN36	39 1/4" (997)	17005936
CN40	45 1/4" (1149)	17005940
CN46	51 1/4" (1302)	17005946
CN50	57 1/4" (1454)	17005950



Sill Liner End Cap

NOTE: Use for replacement of sill liner seals on all units produced prior to 01/09/2017.

Color	LH PN	RH PN
Stone White	11862644	11862643

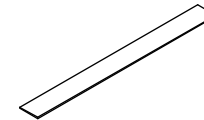


Foam Tape, Sill Liner

Usage dates:

08/26/2013 - 02/27-2017

Color	Length	PN
Gray	12"	17718002



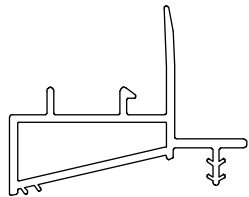
Leveling Block

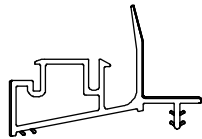
V1472

Usage dates:

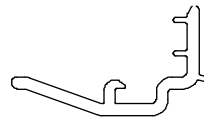
11/2006 - 10/2007

CN	Length	Stone White Exterior	Pebble Exterior	Bronze Exterior
		Stone White Interior		
		Part Numbers		
CN26	13 15/16" (354)	11007426	11007826	11007626
CN30	16 15/16" (430)	11007430	11007530	11007630
CN36	19 15/16" (506)	11007436	11007536	11007636
CN40	22 15/16" (583)	11007440	11007540	11007640
CN46	25 15/16" (659)	11007446	11007546	11007646
CN50	28 15/16" (735)	11007450	11007550	11007650
CN60	34 15/16" (887)	11007460	11007560	11007660
CN70	42 25/32" (1087)	11007470	11007570	11007670
CN80	48 25/32" (1239)	11007480	11007580	11007680
Lineal	96" (2438)	11007296	11007297	11007396

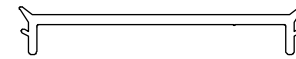




Leveling Block, V1562
Used 10/2007 to 5/2011
No longer available, replace
with current.



Stationary Sash Cover
Used 11/2006 to 7/2008
No longer available,
replace with V1749.

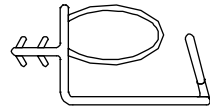


Sill Filler, Picture/Transom, V1557
Used 3/2007 to 2/27/2017
No longer available,
replace with V2844.

Head Jamb/Jamb Weather Strip

V2882

Head Jamb		
CN	Length	Black PN
CN26	12 47/64" (323)	31511726
CN30/60*	15 47/64" (400)	31511730
CN36/70*	18 47/64" (476)	31511736
CN40/80*	21 47/64" (552)	31511740
CN46	24 47/64" (628)	31511746
CN50	27 47/64" (704)	31511750
CN60	33 47/64" (857)	31511760
*Glider Triple Sash		



Jamb		
CN	Length	Black PN
CN16	15 37/64" (396)	31511916
CN20	21 37/64" (548)	31511920
CN26	27 37/64" (700)	31511926
CN30	33 37/64" (853)	31511930
CN36	39 37/64" (1005)	31511936
CN40	45 37/64" (1158)	31511940
CN46	51 37/64" (1310)	31511946
CN50	57 37/64" (1462)	31511950
Lineal	96" (2438)	17018999

Frame Weather Strip, Sill

V1452

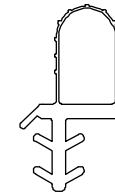
Usage dates:

06/27/2022 - present

Beige used 11/2007 to 06/27/2022

Gray used 11/2006 to 11/2007

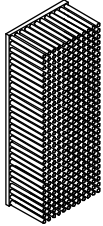
Sill					
CN	Length	Black PN	Beige PN	Gray PN	
CN26	12 5/8" (323)	17323316	17333316	NA	
CN30/60*	15 5/8" (397)	17323319	17333319		
CN36/70*	18 5/8" (473)	17323322	17333322		
CN40/80*	21 5/8" (550)	17323325	17333325		
CN46	24 5/8" (626)	17323328	17333328		
CN50	27 5/8" (702)	17323331	17333331		
CN60	33 5/8" (854)	17323337	17333337		
Lineal	96" (2438)	17333397	17333396		
*Glider Triple Sash					



Dust Block, Header Bracket

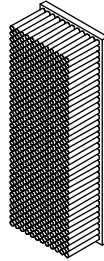
1" x 1/4"

Color	PN
Gray	10600249



Dust Block, End Cap

Color	PN
Gray	10500209

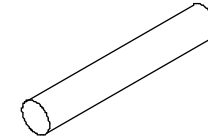


Foam Rope

V1244

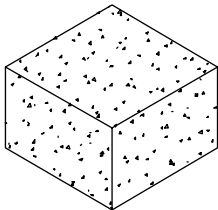
7/32" (6) diameter

Length	Color	PN
50' (15240)	Beige	15910050



Head Jamb Foam Plug

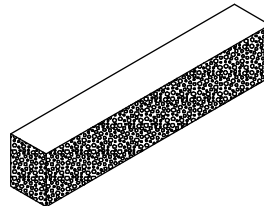
Color	PN
White	10500104



Jamb Weather Strip Plug

NOTE: Used on XO/OX configurations.

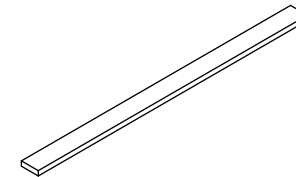
Color	PN
Beige	10500154



Foam Tape

1/4" x 1/8"

Length	Color	PN
50' (15240)	Gray	11406228



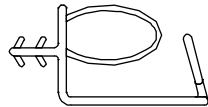
Head Jamb/Jamb Weather Strip

V2312

Usage dates:

Used prior to 06/27/2022

Head Jamb		
CN	Length	Beige PN
CN26	12 47/64" (323)	31511626
CN30/60*	15 47/64" (400)	31511630
CN36/70*	18 47/64" (476)	31511636
CN40/80*	21 47/64" (552)	31511640
CN46	24 47/64" (628)	31511646
CN50	27 47/64" (704)	31511650
CN60	33 47/64" (857)	31511660
*Glider Triple Sash		



Jamb		
CN	Length	Beige PN
CN16	15 37/64" (396)	31511516
CN20	21 37/64" (548)	31511520
CN26	27 37/64" (700)	31511526
CN30	33 37/64" (853)	31511530
CN36	39 37/64" (1005)	31511536
CN40	45 37/64" (1158)	31511540
CN46	51 37/64" (1310)	31511546
CN50	57 37/64" (1462)	31511550
Lineal	96" (2438)	17015599

Frame Weather Strip

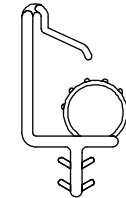
V1541

Usage dates:

11/2006 - 11/2007

Jamb				
Color	CN	Length	XO PN	OX PN
Gray	CN16	15 13/32" (391)	17008816	17008817
	CN20	21 31/32" (544)	17008820	17008821
	CN26	27 13/32" (696)	17008826	17008827
	CN30	33 13/32" (849)	17008830	17008831
	CN36	39 13/32" (1001)	17008836	17008837
	CN40	45 13/32" (1153)	17008840	17008841
	CN46	51 13/32" (1306)	17008846	17008847
	CN50	57 13/32" (1458)	17008850	17008851

Head Jamb			
Color	CN	Length	PN
Gray	CN26	13 1/2" (343)	17000230
	CN30	16 1/2" (419)	17000236
	CN36/70	19 1/2" (495)	17000242
	CN40/80	22 1/2" (5710)	17000248
	CN46	25 1/2" (647)	17000254
	CN50	28 1/2" (724)	17000260
	CN60	34 1/2" (876)	17000272
	Lineal	144" (3657)	17000299



Color	CN	Length	PN
Gray	Lineal	196" (2438)	17008899

Meeting Stile Dust Block

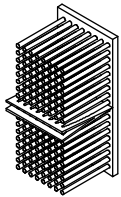
1 1/4" x 3/8"

Usage dates:

04/2006 - 03/2009

NOTE: Adhesive backed

Color	PN
Gray	10500239

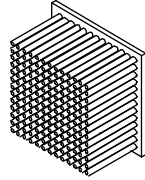


Tilt Pin Pile Weather Strip

Usage dates:

04/2006 - 02/27/2017

Color	PN
Gray	105150



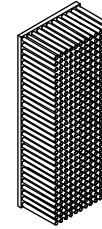
Dust Block, Header Bracket

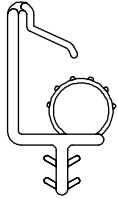
1" x 1/4"

Usage dates:

Used prior to 06/27/2022

Color	PN
Beige	10600250



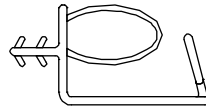


Frame Weather Strip, Head Jamb, V1541

Usage dates: Beige used 11/2007 - 02/2017.

End fabrication has changed. For units ordered between 11/2007 to 02/2017, corresponding jamb weather strip will also need to be replaced.

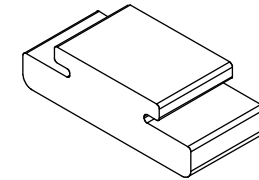
Replace with V2312



Frame Weather Strip, Jamb, V2312

Usage dates: 08/26/2013 - 02/2017. For units ordered between 11/2007 to 02/2017 corresponding jamb weather strip will also need to be replaced.

Replace with current weather strip



Sash Seal

Usage dates: 04/2006 - 3/2009

Use this chart to determine sizes for replacement parts, sash and screen.

- Daylight Opening (DLO) is a measurement of the visible glass.
- OM = Outside Measurement
- Sizes for Glider manufactured 11/20/2006 - present

NOTE: Sash OM does not include sash covers.

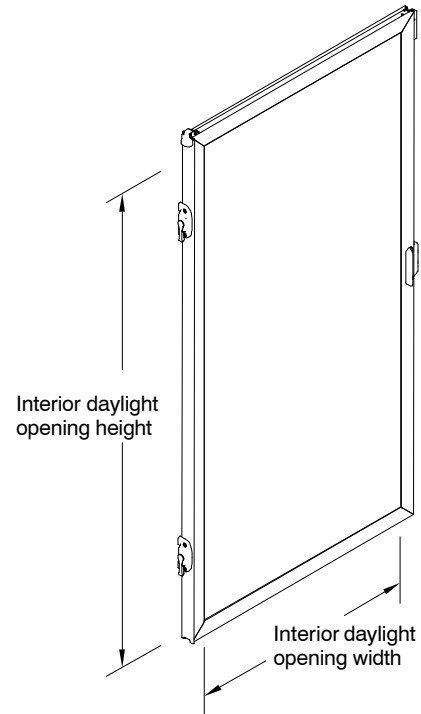
Width**				
CN	Frame OM	Sash OM	DLO	Screen OM
CN26	29 1/2" (749)	14" (356)	11 5/16" (287)	14" (356)
CN30	35 1/2" (902)	17" (432)	14 5/16" (363)	17" (432)
CN36	41 1/2" (1054)	20" (508)	17 5/16" (440)	20" (508)
CN40	47 1/2" (1207)	23" (584)	20 5/16" (516)	23" (584)
CN46	53 1/2" (1359)	26" (660)	23 5/16" (592)	26" (660)
CN50	59 1/2" (1511)	29" (737)	26 5/16" (668)	29" (737)
CN60	71 1/2" (1816)	35" (889)	32 5/16" (821)	35" (889)
CN60*	71 1/2" (1816)	36 27/32" (936)	34 5/32" (867)	17" (432)
CN70*	83 1/2" (2121)	42 27/32" (1088)	40 5/32" (1020)	20" (508)
CN80*	95 1/2" (2426)	48 27/32" (1240)	46 5/32" (1172)	23" (584)
*Glider Triple Sash				
**XOX 60, 70, and 80: sash and DLO numbers listed for stationary sash. For operator sash numbers refer to the 30, 36, and 40 numbers respectively				

Height				
CN	Frame OM	Sash OM	DLO	Screen OM
CN16	17 1/2" (445)	15 1/4" (387)	12 9/16" (319)	15 15/16" (405)
CN20	23 1/2" (597)	21 1/4" (540)	18 9/16" (471)	21 15/16" (557)
CN26	29 1/2" (749)	27 1/4" (692)	24 9/16" (624)	27 15/16" (710)
CN30	35 1/2" (902)	33 1/4" (845)	30 9/16" (776)	33 15/16" (862)
CN36	41 1/2" (1054)	39 1/4" (997)	36 9/16" (929)	39 15/16" (1014)
CN40	47 1/2" (1207)	45 1/4" (1149)	42 9/16" (1081)	45 15/16" (1167)
CN46	53 1/2" (1359)	51 1/4" (1302)	48 9/16" (1233)	51 15/16" (1319)
CN50	59 1/2" (1511)	57 1/4" (1454)	54 9/16" (1386)	57 15/16" (1472)

To order, specify:

1. Sash – stationary, operator, or both;
2. handing;
3. size;
4. glazing;
5. exterior color.

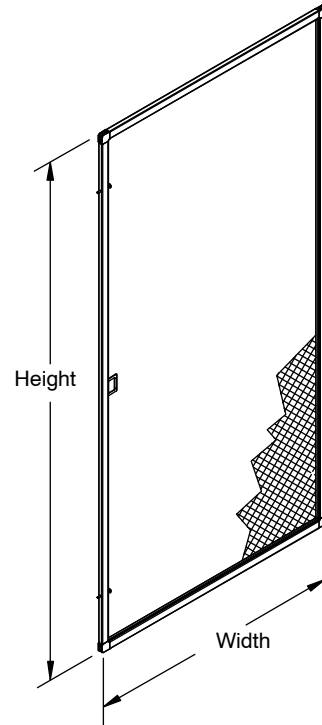
NOTE: Stationary sashes include replacement parting stops.



To order, specify:

1. Size – If no screen is available, measure the interior DLO and provide corresponding call number size;
2. color.

NOTE: OM of screen includes corner keys.

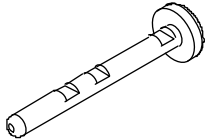


Friction Plunger, Screen

Usage dates:

01/28/2019 - present

Color	PN
Clear	10508195

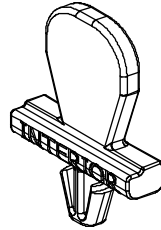


Header Screen Clip

Usage dates:

07/30/2012 - present

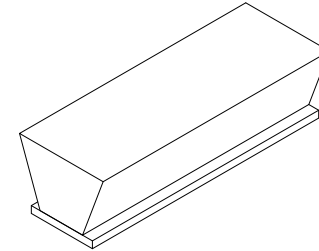
Color	PN
Clear	10600253



Screen Pile Weather Strip

Adhesive Backing

Length	Color	PN
Specify length (LF)	Gray	15619399



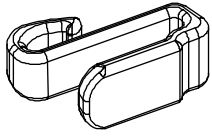
Screen Clip

Usage dates:

11/26/2007 to 07/29/2012 (Beige)

11/2006 to 11/26/2007 (Gray)

Color	PN
Beige	11870290
Gray	11860290



Screen Plunger Kit

Includes:

1 - Plunger Bolt

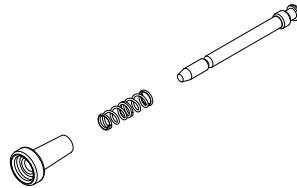
1 - Plunger Spring

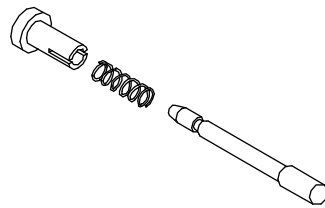
1 - Plunger Cap, Black

Usage dates:

03/2007 to 01/27/2019

PN
11851053





Plunger and Spring Assembly

Plunger bolt - Off White, Plunger cap - Clear

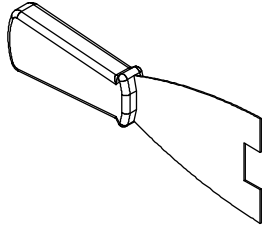
Used: 03/2007 - 01/27/2019

Stationary Sash Removal Tool

Usage dates:

Used for units built prior to 03/23/2009

PN
11860030



Dow Corning™ 1199 Silicone

Color	PN
Clear	11407092

