



# Ultimate Double Hung/Single Hung G2

## Ultimate Double/Single Hung G1 Disc LA PRE 4/24/17

### Replacement Parts

Specifications and technical data are subject to change without notice.

Numbers listed in ( ) parentheses are metric equivalents in millimeters rounded to the nearest whole number.

Suggested fasteners are not included and must be ordered separately.

Illustrations are not to scale.

### Contents

Product History.....	3
Part Identification - Ultimate Double Hung G2 - Operator .....	5
Part Identification - Ultimate Double Hung G2 - Operator (shown with LSS) .....	6
Part Identification - Ultimate Double Hung G2 - Picture.....	7
Part Identification - Ultimate Double Hung G2 - Transom.....	8
Part Identification - Ultimate Double Hung G2 IZ3 - Operator .....	9
Part Identification - Ultimate Double Hung G2 IZ3 - Picture .....	10
Part Identification - Ultimate Single Hung G2 - Operator.....	11
Part Identification - Ultimate Single Hung G2 - Operator (shown with LSS) .....	12
Part Identification - Ultimate Single Hung G2 - Operator w/Lift Lock.....	13
Part Identification - Ultimate Single Hung G2 IZ3 - Operator .....	14
Part Identification - Ultimate Double Hung Round Top G2 - Operator.....	15
Part Identification - Ultimate Double Hung Round Top G2 - Picture.....	16
Part Identification - Ultimate Double Hung Round Top G2 - Transom.....	17
Part Identification - Ultimate Double Hung Round Top G2 IZ3 - Operator .....	18
Part Identification - Ultimate Single Hung Round Top G2 - Operator .....	19
Part Identification - Ultimate Single Hung Round Top G2 - Operator w/Lift Lock.....	20
Miscellaneous Parts .....	21
Miscellaneous Parts - Discontinued Limited Availability (LA).....	31
Parts - Round Top .....	35
Lock Status Sensor Parts.....	36
WOCD Field Applied and Replacement Parts .....	37
Jamb Liner.....	38
Balance Tubes - Block and Tackle .....	39
Balance Tubes - Block and Tackle - DISC (LA) .....	40
Balance Tubes - Spiral.....	41
Balance Tubes - Spiral - UL Series.....	42
Balance Tubes - Spiral - ULX Series .....	47
Aluminum Parts .....	49
Aluminum Parts - Discontinued No Availability (NA).....	51

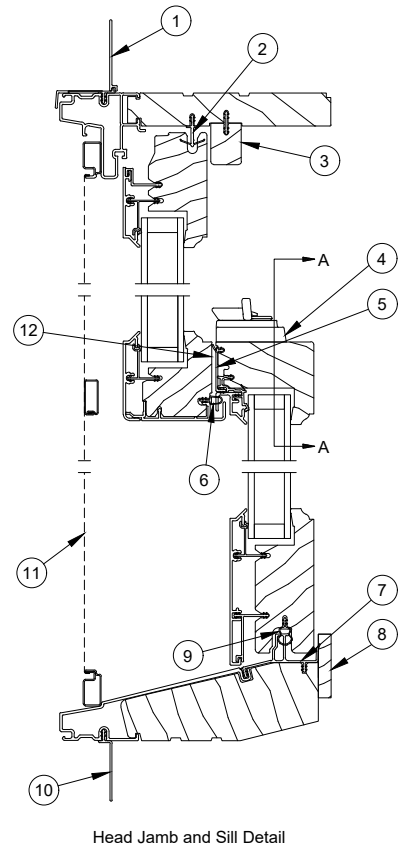
Contents continued on next page

## Contents (cont.)

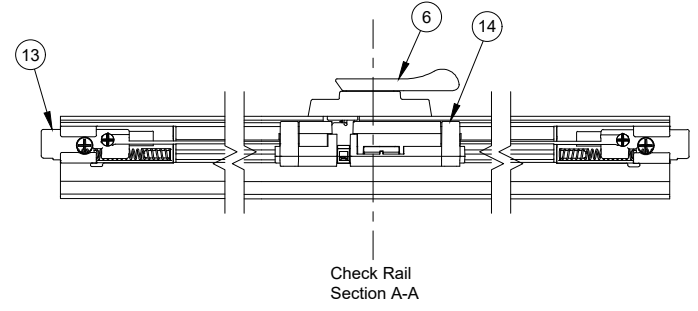
Vinyl Parts .....	52
Vinyl Parts - Discontinued Limited Availability (LA) .....	54
Wood Parts.....	55
Weather Strip.....	57
Weather Strip - Discontinued Limited Availability (LA) .....	59
Weather Strip - Discontinued No Availability (NA) .....	60
Screen Replacement.....	61
Screen Parts .....	62
Retractable Screen - Configured Parts in OMS - Service Only.....	63
Retractable Screen Parts.....	64
Retractable Screen Parts No Availability (DISC - NA) .....	66
Combination Replacement and Parts.....	67

Produced	Unit Type	Features and Changes
2014	Ultimate Double Hung G1 DISC LA PRE 4/24/17	04/28/14: Introduced the Ultimate Double Hung G1 – product family. It's a vertical sliding hung window platform that has an overall jamb depth of 4 9/16". Available in a variety of sizes and products including: Double Hung, Picture, Transom and Single Hung. Operators include a multi–point locking hardware system that locks into the jambs with a tilt–mode feature. Introduced Retractable Screens The screen deploys from the top in a pull down operation. It may be used separately or in conjunction with an interior shade system. 10/27/14: Redesigned balances for even better operating performance. Also introduced Certified mulls. Implemented the new performance brackets. Also there was 0.121" added to the checkrail interlock.
2015	Ultimate Double Hung G1 DISC LA PRE 4/24/17 Ultimate Double Hung Round Top G1 DISC LA PRE 4/24/17	02/23/2015: Introduced factory installed Window Opening Control Device (WOCD) Field Service Only. Available in all 9 hardware colors. IZ3 introduced. Introduced the Ultimate Double Hung Round Top G1, Including Picture and Transom. 08/31/2015: Introduced Sash Limiters and exterior sash lug, ogee profile. 12/21/2015: Introduced new colors to our standard color palette; Clay (CL), Gunmetal (GM), Liberty Bronze (MLB), and Suede (SE). Discontinued Arctic White, Cumulus Gray, Desert Beige, and French Vanilla from the color palette.
2016	Ultimate Double Hung G1 DISC LA PRE 4/24/17 Ultimate Double Hung Round Top G1 DISC LA PRE 4/24/17	04/25/2016 Redesigned jamb weather strip and vinyl jamb liners for improved performance. Discontinued use of EZE balances tube. Replaced with Block and Tackle or UL Hybrid Spiral balance tube, based upon sash weight.
	All	06/27/2016: Added Matte Black as a standard hardware color.
2017	Ultimate Double Hung G2	04/24/2017: Discontinued multi–point locking hardware system that locks into the jambs. Introduction of the Ultimate Double Hung G2 enhanced locking system. Features include a centralized locking point at the check rail, a complete metal drive locking system and an updated jamb receiver assembly to assist with installation. 12/18/2017: Added availability of Lock Status Sensor.
2018	Ultimate Double Hung G2 Ultimate Single Hung G2 Ultimate Single Hung Round Top G2	02/26/2018: Introduced Commercial Window option (replaces Ultimate Double Hung Magnum DISC LA PRE 6/25/2018). Introduced Both Sash Stationary option. 04/30/2018: Added Commercial Window option (replaces Ultimate Double Hung Magnum DISC LA PRE 6/25/2018). 06/25/2018: Added Lift Lock option.
2018	Ultimate Double Hung G2	08/27/2018: WOCD components removed for compliance with I–codes ASTM E2090.
2019	Ultimate Double Hung G2 Ultimate Single Hung G2	02/25/2019: Maximum size expanded from CN5456 to CN6060. 08/26/2019: Added a Round Top Variation 6 rectangular sash option.
2020	Ultimate Double Hung G2	04/27/2020: Added WOCD field applied and replacement kits (see Product Bulletin 758).
2021	Ultimate Double Hung G1 DISC LA PRE 4/24/17	02/22/2021: Marvin will no longer accept orders for the Ultimate Double Hung G1 replacement frames or complete windows. See Product Bulletin 769 for more details.
	All	10/25/2021: Standard screen mesh changed to Marvin Bright View™. For more information see Product Bulletin 793.
2022	All	06/27/2022: The Aluminum Screen will be the standard for units with a frame size height of <math>\leq 54\ 1/2''</math>, with an option of the Extruded Aluminum Screen available. The standard screen for any unit with a frame size height >54 1/2" will be the Extruded Aluminum Screen. This improvement to screen frames includes all Ultimate and Ultimate Wood windows that accept an aluminum screen, including Round Top and Polygon shapes. See Product Bulletin 832 for more details. 10/24/2022: With OMS version 3.17, V2783 Header Weather Strip, will only be available in Black. White and Beige part numbers in OMS Retail have been directed to use only Black. Beige and White part number have been removed from the Replacement Parts section. See Product Bulletin #847 for more details.
2023	All	04/24/2023: The Retractable Screen was moved to Discontinued - No Availability (DISC-NA). See Product Bulletin 873 for more information.
	Ultimate Double Hung G2 Ultimate Single Hung G2 Ultimate Single Hung Round Top G2	10/30/2023: An ERS coating became available as a standard option for current Triple Pane offerings. See Product Bulletin 904 for more details.

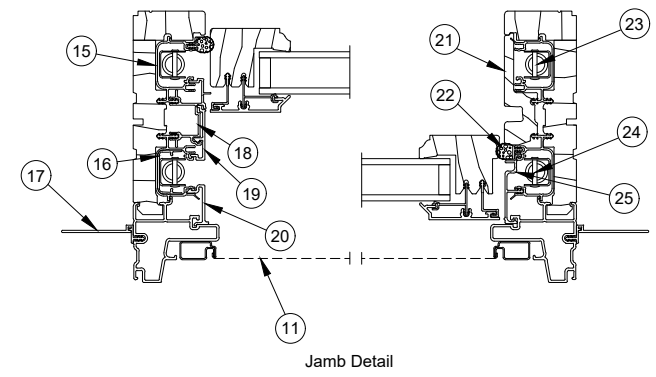
Produced	Unit Type	Features and Changes
2024	Ultimate Double Hung G2 Ultimate Single Hung G2 Ultimate Single Hung Round Top G2	06/24/2024: Update for Ultimate Combinations and Ultimate Wood Combinations and Energy Panels were made. See Product Bulletin #937 for more Information.



Head Jamb and Sill Detail



Check Rail Section A-A

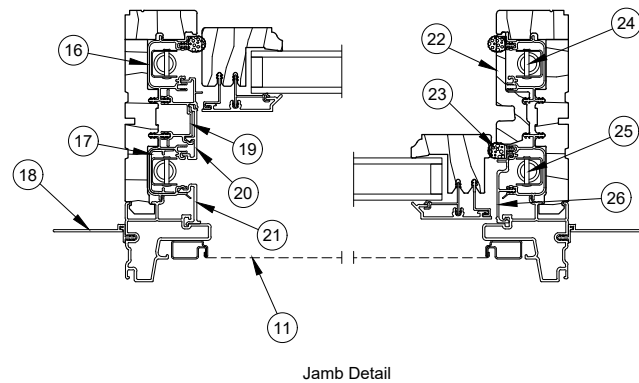
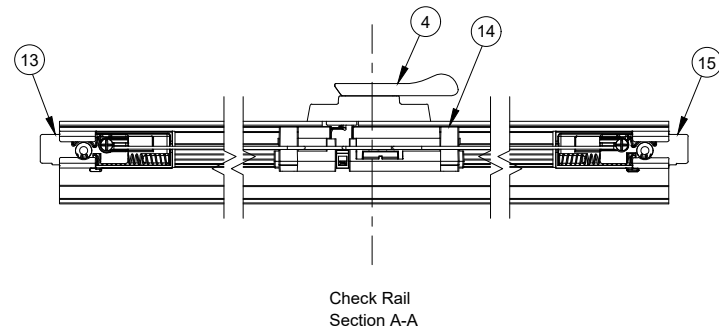
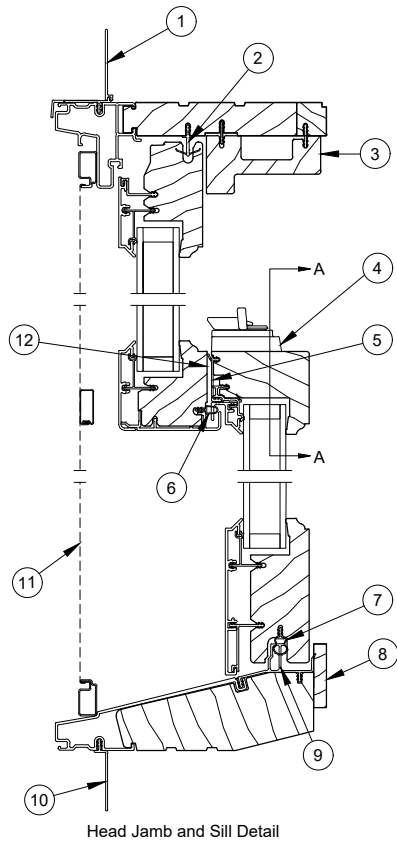


Jamb Detail

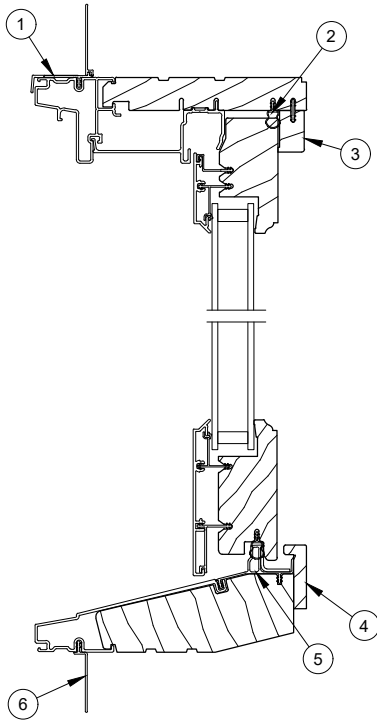
- 1. Head Jamb Nailing Fin/Drip Cap, V119
- 2. Head Jamb Weather Strip, V2783
- 3. Parting Stop, W11578
- 4. Sash Lock
- 5. Bottom Check Rail Hardware Cover, V2478
- 6. Top Check Rail Weather Strip, V2803
- 7. Sill Thermal Break, V2191
- 8. Sill Liner, W11576
- 9. Weather Strip, V2779

- 10. Sill Nailing Fin, V084
- 11. Full Screen Assembly
- 12. Strike Assembly
- 13. Bottom Sash Latch Assembly
- 14. Cord Guide Assembly
- 15. Vinyl Jamb Liner, V2655
- 16. Exterior Sash Stop, V2257
- 17. Jamb Nailing Fin, V104

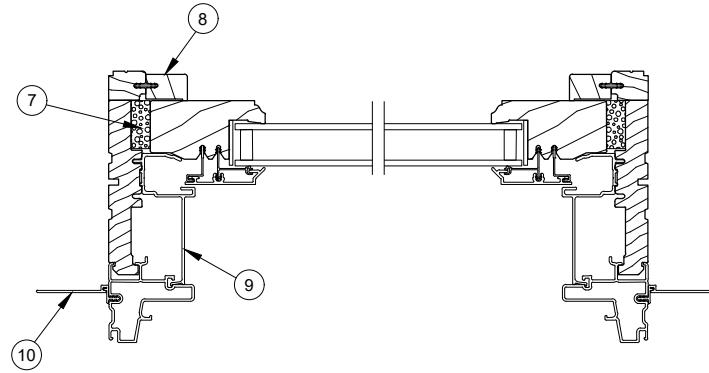
- 18. Mid Cover Base, V2432
- 19. Clad Mid Exterior Cover, A2460
- 20. Exterior Clad Cover, A2615
- 21. Interior Jamb Cover, W11581
- 22. Frame Weather Strip, V2682
- 23. Bottom Sash Balance Tube
- 24. Top Sash Balance Tube
- 25. Exterior Hardware Cover, V2338



- |  |  |   |
|--|--|---|
| <ul style="list-style-type: none"> <li>1. Head Jamb Nailing Fin/Drip Cap, V119</li> <li>2. Head Jamb Weather Strip, V2783</li> <li>3. Transmitter Cover, W12982</li> <li>4. Sash Lock</li> <li>5. Bottom Check Rail Hardware Cover, V2478</li> <li>6. Top Check Rail Weather Strip, V2803</li> <li>7. Weather Strip, V2779</li> <li>8. Sill Liner, W11576</li> <li>9. Sill Thermal Break, V2191</li> </ul> | <ul style="list-style-type: none"> <li>10. Sill Nailing Fin, V084</li> <li>11. Full Screen Assembly</li> <li>12. Strike Assembly</li> <li>13. Bottom Sash Latch Assembly</li> <li>14. Cord Guide Assembly</li> <li>15. Bottom Sash Latch Assembly, Lock Status Sensor</li> <li>16. Vinyl Jamb Liner, V2655</li> <li>17. Exterior Sash Stop, V2257</li> <li>18. Jamb Nailing Fin, V104</li> </ul> | <ul style="list-style-type: none"> <li>19. Mid Cover Base, V2432</li> <li>20. Clad Mid Exterior Cover, A2460</li> <li>21. Exterior Clad Cover, A2615</li> <li>22. Interior Jamb Cover, W11581</li> <li>23. Frame Weather Strip, V2682</li> <li>24. Bottom Sash Balance Tube</li> <li>25. Top Sash Balance Tube</li> <li>26. Exterior Hardware Cover, V2338</li> </ul> |
|--|--|---|

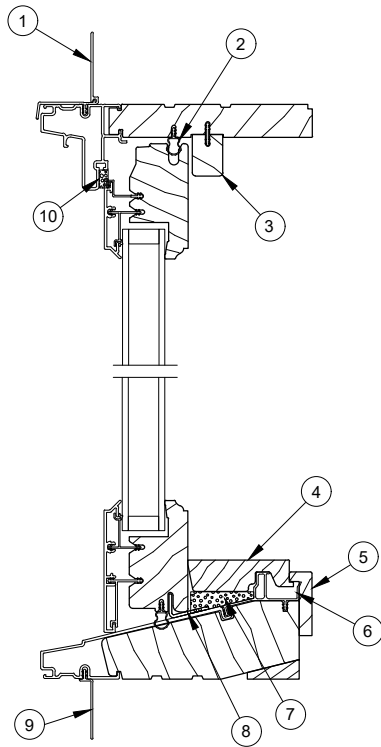


Head Jamb and Sill Detail

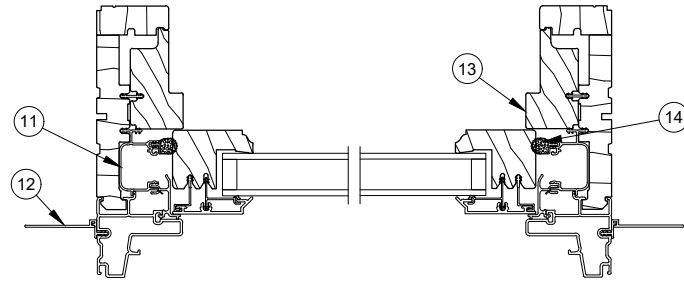


Jamb Detail

- |   |                               |
|---|-------------------------------|
| 1. Head Jamb Nailing Fin/Drip Cap, V119 | 6. Sill Nailing Fin, V084     |
| 2. Weather Strip, V2779                 | 7. Jamb Filler Foam           |
| 3. Interior Sash Stop, W12407           | 8. Jamb Stop, W12407          |
| 4. Sill Liner, W11825                   | 9. Exterior Clad Cover, A3077 |
| 5. Sill Thermal Break, V2191            | 10. Jamb Nailing Fin, V104    |



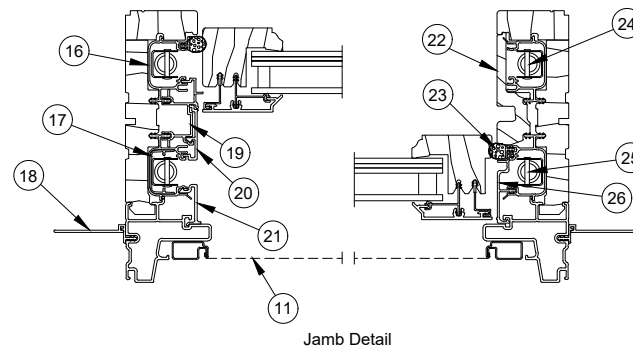
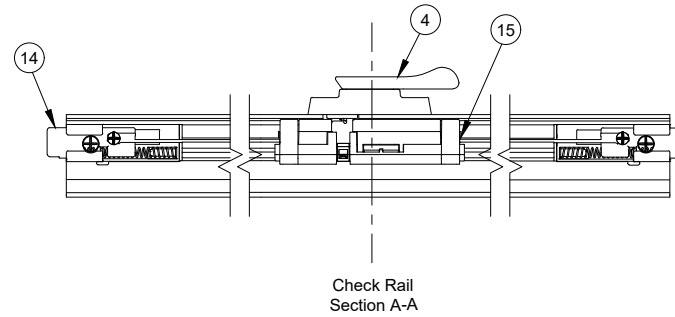
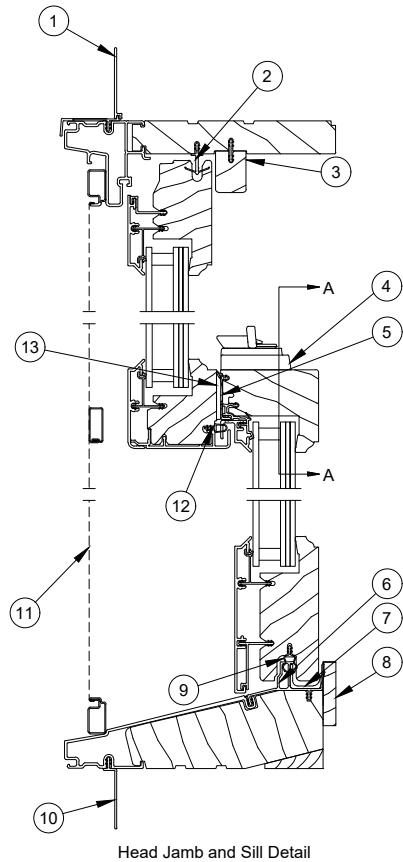
Head Jamb and Sill Detail



Jamb Detail

- |   |                                    |
|---|------------------------------------|
| 1. Head Jamb Nailing Fin/Drip Cap, V119 | 8. Transom Bracket                 |
| 2. Weather Strip, V2779                 | 9. Sill Nailing Fin, V084          |
| 3. Parting Stop, W11578                 | 10. Foam Tape                      |
| 4. Sill Filler, W12061                  | 11. Vinyl Jamb Liner, V2655        |
| 5. Sill Liner, W11825                   | 12. Jamb Nailing Fin, V104         |
| 6. Sill Thermal Break, V2191            | 13. Interior Cover Transom, W11906 |
| 7. Transom Sill Filler Foam             | 14. Jamb Weather Strip, V2682      |

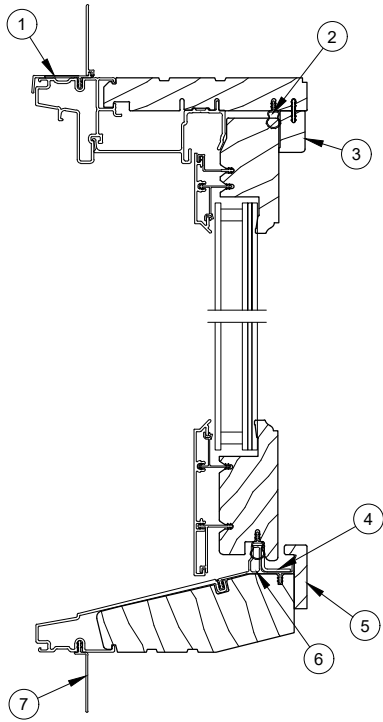




1. Head Jamb Nailing Fin/Drip Cap, V119
2. Head Jamb Weather Strip, V2783
3. Parting Stop, W11578
4. Sash Lock
5. Bottom Check Rail Hardware Cover, V2478
6. Sill Thermal Break, V2191
7. IZ3 Sill Reinforcement, A2766
8. Sill Liner, W11576
9. Weather Strip, V2779

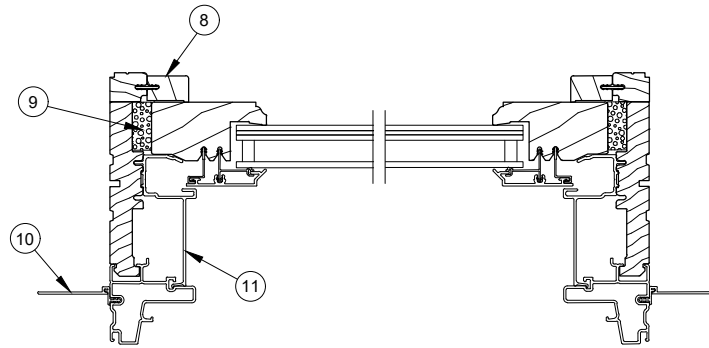
10. Sill Nailing Fin, V084
11. Full Screen Assembly
12. Top Check Rail Weather Strip, V2803
13. Strike Assembly
14. Bottom Sash Latch Assembly
15. Cord Guide Assembly
16. Vinyl Jamb Liner, V2655
17. Exterior Sash Stop, V2257
18. Jamb Nailing Fin, V104

19. Mid Cover Base, V2432
20. Clad Mid Exterior Cover, A2460
21. Exterior Clad Cover, A2615
22. Interior Jamb Cover, W11581
23. Frame Weather Strip, V2682
24. Bottom Sash Balance Tube
25. Top Sash Balance Tube
26. Exterior Hardware Cover, V2338



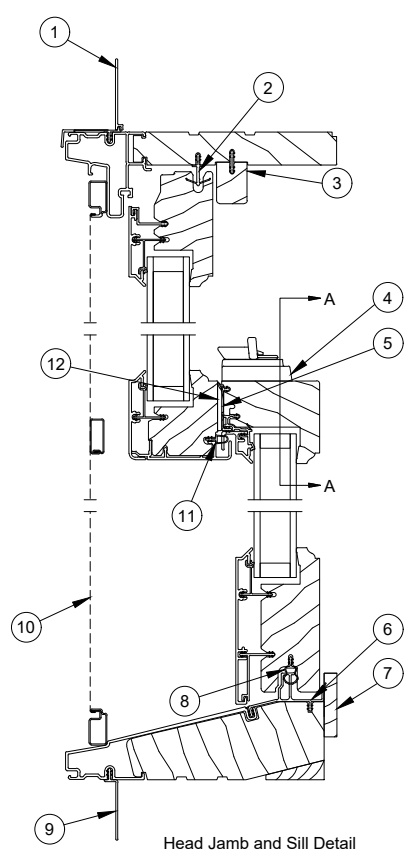
IZ3 Head Jamb and Sill Detail

1. Head Jamb Nailing Fin/Drip Cap, V119
2. Weather Strip, V2779
3. IZ3 Interior Sash Stop, W12407
4. IZ3 Sill Bracket
5. Sill Liner, W11825
6. Sill Thermal Break/Liner, V2191

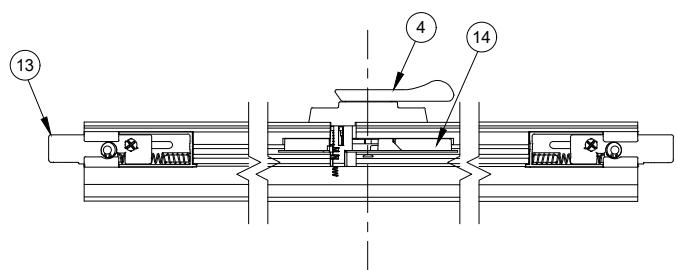


IZ3 Jamb Detail

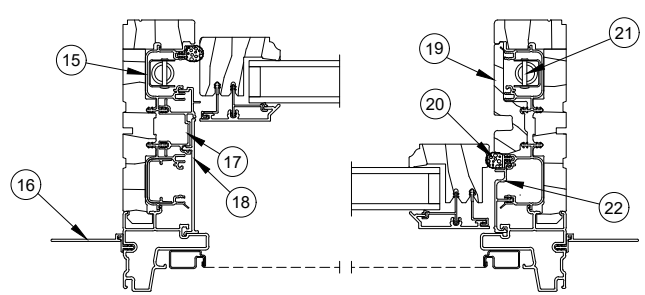
7. Sill Nailing Fin, V084
8. Jamb Stop, W12407
9. Jamb Filler Foam
10. Jamb Nailing Fin, V104
11. Exterior Clad Cover, A3077



Head Jamb and Sill Detail



Check Rail  
Section A-A

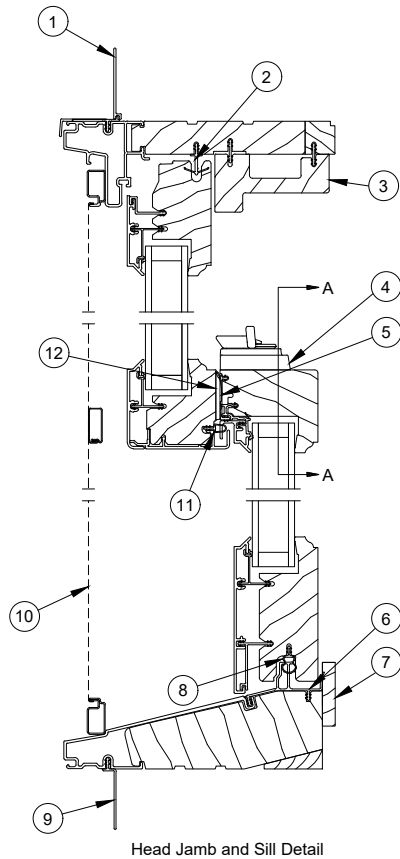


Jamb Detail

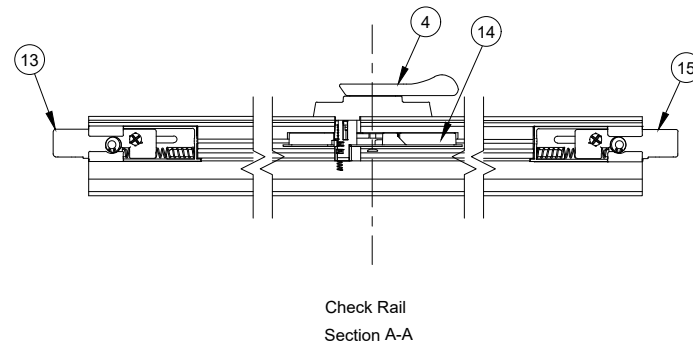
- 1. Head Jamb Nailing Fin/Drip Cap, V119
- 2. Head Jamb Weather Strip, V2783
- 3. Parting Stop, W11578
- 4. Sash Lock
- 5. Bottom Check Rail Hardware Cover, V2478
- 6. Sill Thermal Break, V2191
- 7. Sill Liner, W11576
- 8. Weather Strip, V2779

- 9. Sill Nailing Fin, V084
- 10. Full Screen Assembly
- 11. Top Check Rail Weather Strip, V2803
- 12. Strike Assembly
- 13. Bottom Sash Latch Assembly
- 14. Cord Guide Assembly
- 15. Vinyl Jamb Liner, V2655

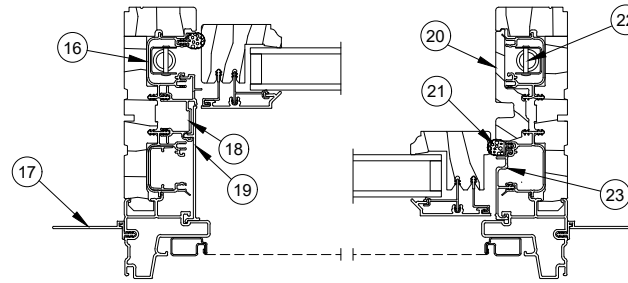
- 16. Jamb Nailing Fin, V104
- 17. Mid Cover Base, V2432
- 18. Single Hung Exterior Cover, A2700
- 19. Interior Jamb Cover, W11581
- 20. Frame Weather Strip, V2682
- 21. Bottom Sash Balance Tube
- 22. Exterior Hardware Cover, V2338



Head Jamb and Sill Detail

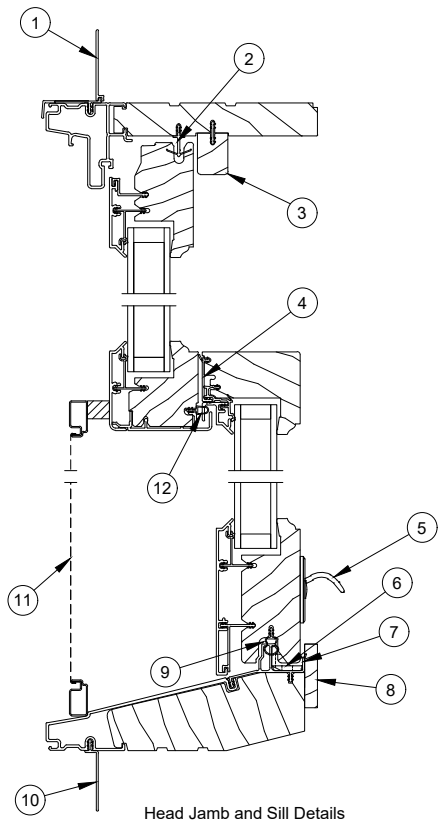


Check Rail  
Section A-A

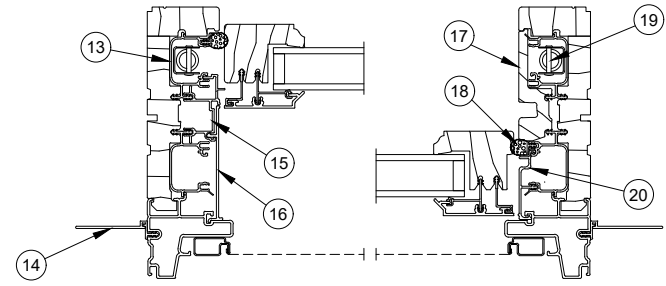


Jamb Detail

- |   |   |
|---|---|
| <ol style="list-style-type: none"> <li>1. Head Jamb Nailing Fin/Drip Cap, V119</li> <li>2. Head Jamb Weather Strip, V2783</li> <li>3. Transmitter Cover, W12982</li> <li>4. Sash Lock</li> <li>5. Bottom Check Rail Hardware Cover, V2478</li> <li>6. Sill Thermal Break, V2191</li> <li>7. Sill Liner, W11576</li> <li>8. Weather Strip, V2779</li> <li>9. Sill Nailing Fin, V084</li> <li>10. Full Screen Assembly</li> <li>11. Top Check Rail Weather Strip, V2803</li> <li>12. Strike Assembly</li> </ol> | <ol style="list-style-type: none"> <li>13. Bottom Sash Latch Assembly</li> <li>14. Cord Guide Assembly</li> <li>15. Bottom Sash Latch Assembly, Lock Status Sensor</li> <li>16. Vinyl Jamb Liner, V2655</li> <li>17. Jamb Nailing Fin, V104</li> <li>18. Mid Cover Base, V2432</li> <li>19. Single Hung Exterior Cover, A2700</li> <li>20. Interior Jamb Cover, W11581</li> <li>21. Frame Weather Strip, V2682</li> <li>22. Bottom Sash Balance Tube</li> <li>23. Exterior Hardware Cover, V2338</li> </ol> |
|---|---|

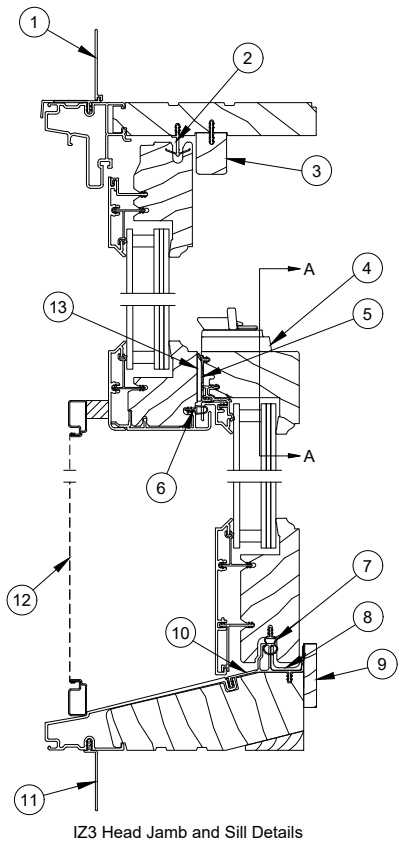


Head Jamb and Sill Details

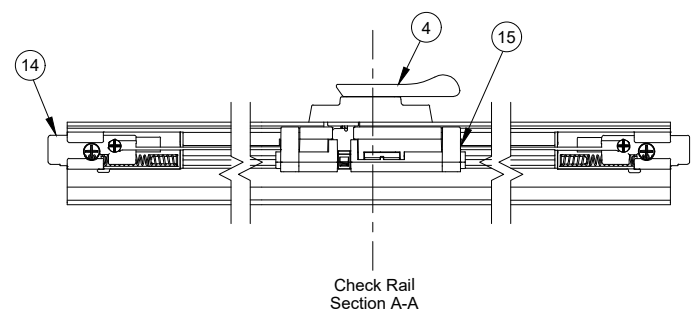


Jamb Details

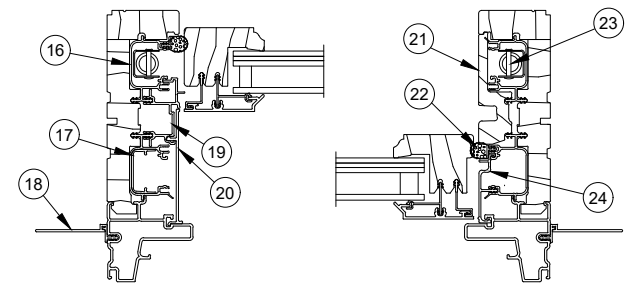
- |  |   |
|--|---|
| <ul style="list-style-type: none"> <li>1. Head Jamb Nailing Fin/Drip Cap, V119</li> <li>2. Head Jamb Weather Strip, V2783</li> <li>3. Parting Stop, W11578</li> <li>4. Bottom Check Rail Hardware Cover, V2478</li> <li>5. Lift Lock</li> <li>6. Lift Lock Strike</li> <li>7. Sill Thermal Break/Liner, V2191</li> <li>8. Sill Liner, W11576</li> <li>9. Weather Strip, V2779</li> <li>10. Sill Nailing Fin, V084</li> </ul> | <ul style="list-style-type: none"> <li>11. Half Screen Assembly</li> <li>12. Top Check Rail Weather Strip, V2783</li> <li>13. Vinyl Jamb Liner, V2655</li> <li>14. Jamb Nailing Fin, V104</li> <li>15. Mid Exterior Cover Base, V2432</li> <li>16. Exterior Cover, A2700</li> <li>17. Interior Jamb Cover, W11581</li> <li>18. Jamb Weather Strip, V2682</li> <li>19. Bottom Sash Balance Tube</li> <li>20. Exterior Hardware Cover, V2338</li> </ul> |
|--|---|



IZ3 Head Jamb and Sill Details

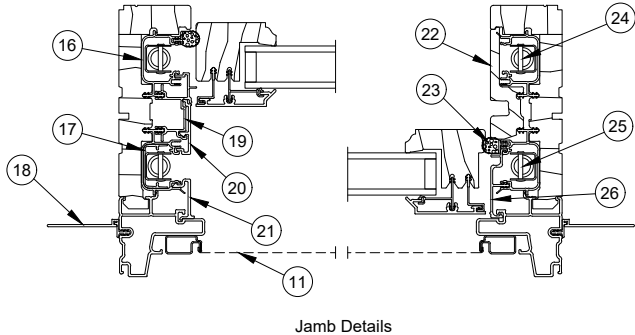
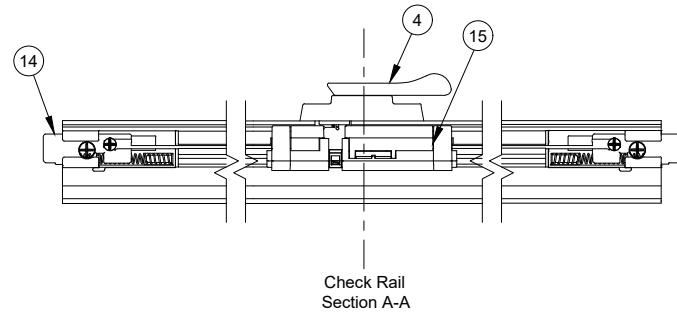
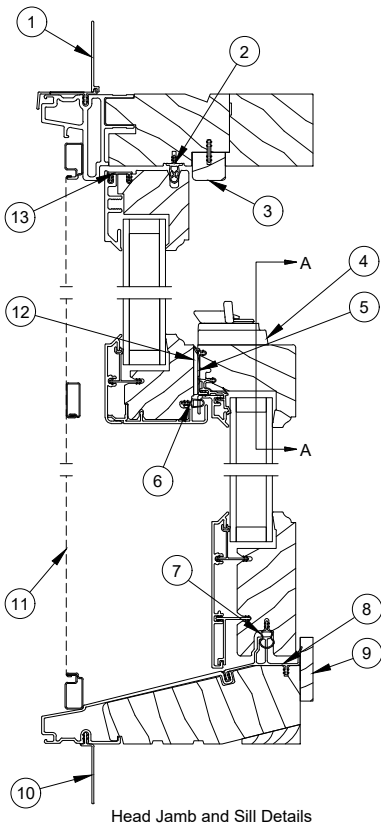


Check Rail Section A-A



IZ3 Jamb Detail

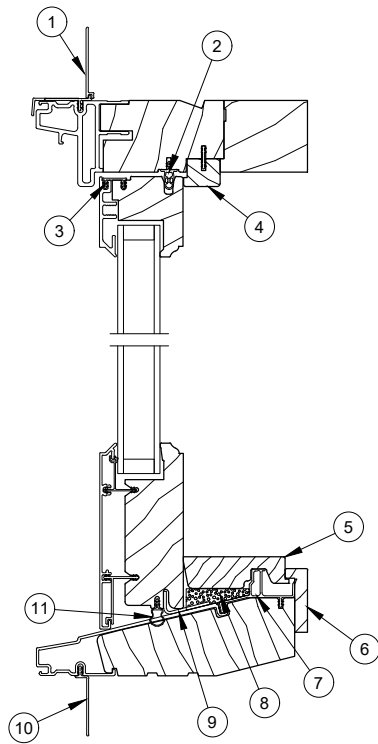
- |  |                                |                                       |
|--|--------------------------------|---------------------------------------|
| 1. Head Jamb Nailing Fin/Drip Cap, V119    | 9. Sill Liner, W11576          | 17. Exterior Sash Stop, V2257         |
| 2. Head Jamb Weather Strip, V2783          | 10. Sill Thermal Break, V2191  | 18. Jamb Nailing Fin, V104            |
| 3. Parting Stop, W11578                    | 11. Sill Nailing Fin, V084     | 19. Mid Cover Base, V2432             |
| 4. Sash Lock                               | 12. Half Screen                | 20. Single Hung Exterior Cover, A2700 |
| 5. Bottom Check Rail Hardware Cover, V2478 | 13. Strike Assembly            | 21. Interior Jamb Cover, W11581       |
| 6. Top Check Rail Weather Strip, V2803     | 14. Bottom Sash Latch Assembly | 22. Frame Weather Strip, V2682        |
| 7. Weather Strip, V2779                    | 15. Cord Guide Assembly        | 23. Bottom Sash Balance Tube          |
| 8. Sill Reinforcement IZ3, A2766           | 16. Vinyl Jamb Liner, V2655    | 24. Exterior Hardware Cover, V2338    |



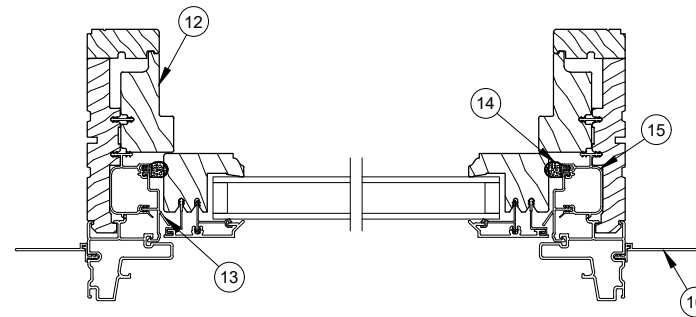
- 1. Head Jamb Nailing Fin/Drip Cap, V119
- 2. Head Jamb Weather Strip, V2786
- 3. Parting Stop, W12224
- 4. Sash Lock
- 5. Bottom Check Rail Hardware Cover, V2478
- 6. Top Check Rail Weather Strip, V2803
- 7. Weather Strip, V2779
- 8. Sill Thermal Break, V2191
- 9. Sill Liner, W11576

- 10. Sill Nailing Fin, V084
- 11. Full Screen Assembly
- 12. Strike Assembly
- 13. Sash Connector, V2401
- 14. Bottom Sash Latch Assembly
- 15. Cord Guide Assembly
- 16. Vinyl Jamb Liner, V2655
- 17. Exterior Sash Stop, V2257
- 18. Jamb Nailing Fin, V104

- 19. Mid Cover Base, V2432
- 20. Clad Mid Exterior Cover, A2460
- 21. Exterior Clad Cover, A2615
- 22. Interior Jamb Cover, W11581
- 23. Frame Weather Strip, V2682
- 24. Bottom Sash Balance Tube
- 25. Top Sash Balance Tube
- 26. Exterior Hardware Cover, V2338



Head Jamb and Sill Detail

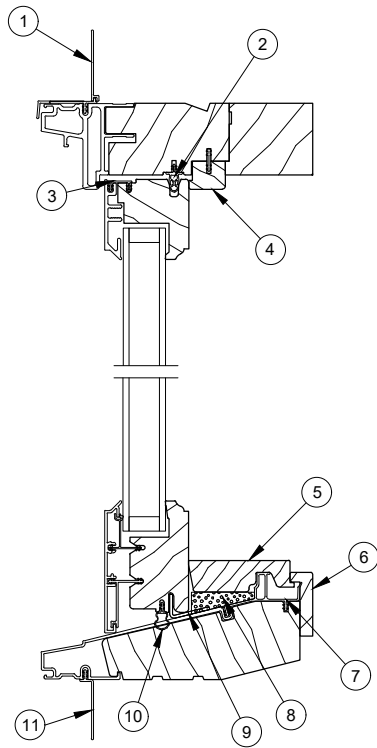


Jamb Detail

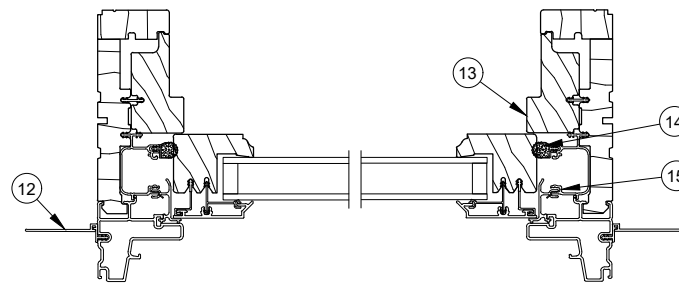
1. Head Jamb Nailing Fin/Drip Cap, V119
2. Head Jamb Weather Strip, V2786
3. Sash Connector, V2401
4. Head Jamb Stop, W12851
5. Sill Filler, W12061
6. Sill Filler Foam
7. Sill Liner, W11825
8. Sill Thermal Break/Liner, V2191

9. Transom Sill Bracket
10. Sill Nailing Fin, V084
11. Weather Strip, V2779
12. Interior Cover, W11906
13. Sash Retainer Cover, V2509
14. Jamb Weather Strip, V2682
15. Vinyl Jamb Liner, V2655
16. Jamb Nailing Fin, V104



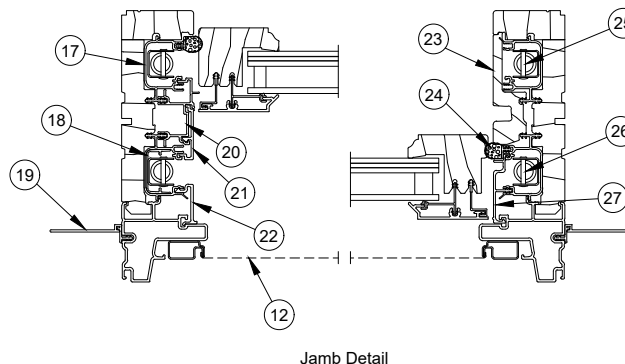
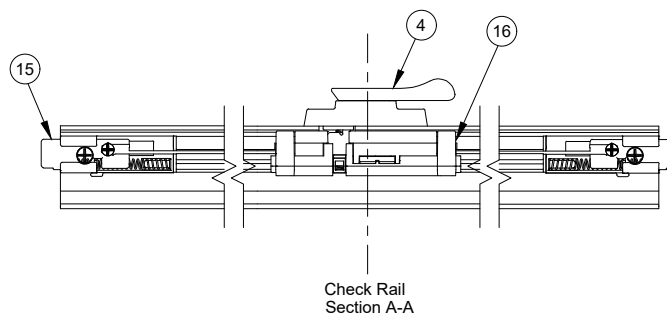
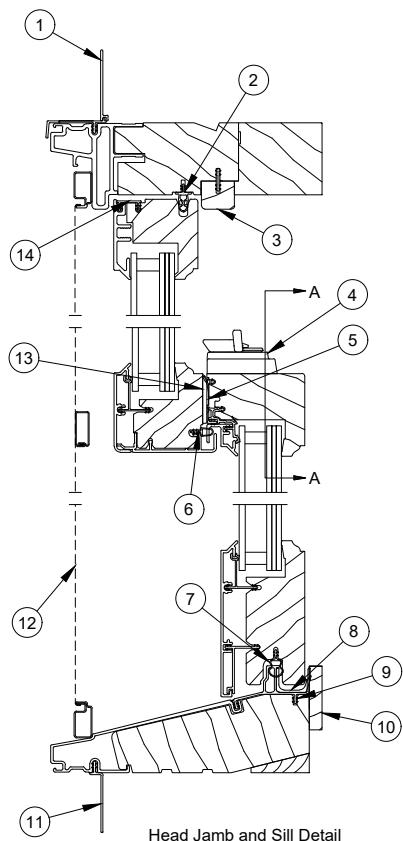


Head Jamb and Sill Detail



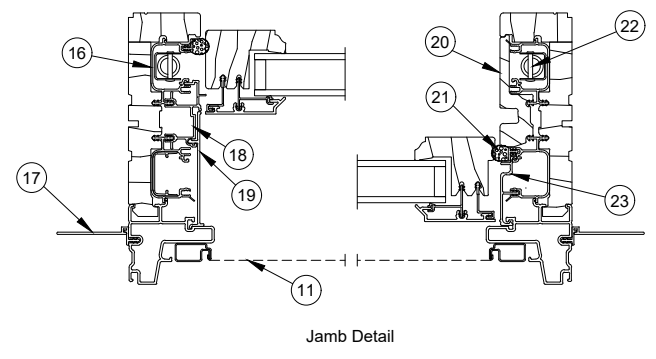
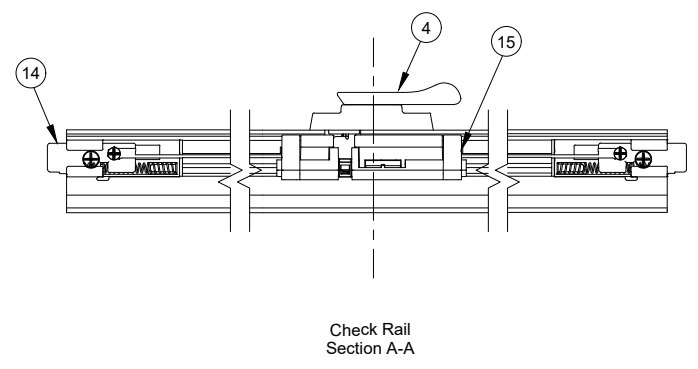
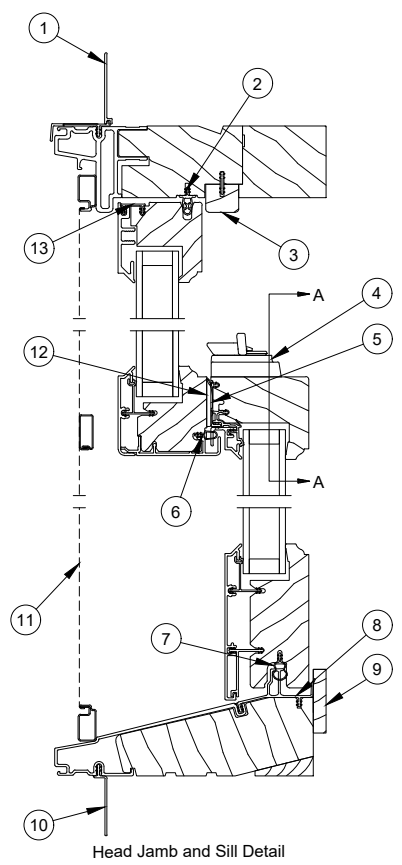
Jamb Detail

- |   |                                    |
|---|------------------------------------|
| 1. Head Jamb Nailing Fin/Drip Cap, V119 | 9. Transom Bracket                 |
| 2. Head Jamb Weather Strip, V2786       | 10. Weather Strip, V2779           |
| 3. Sash Connector, V2401                | 11. Sill Nailing Fin, V084         |
| 4. Head Jamb Stop, W12851               | 12. Jamb Nailing Fin, V104         |
| 5. Sill Filler, W12061                  | 13. Interior Cover Transom, W11906 |
| 6. Sill Liner, W11825                   | 14. Jamb Weather Strip, V2682      |
| 7. Sill Thermal Break, V2191            | 15. Vinyl Jamb Liner, V2665        |
| 8. Sill Filler Foam                     |                                    |



- 1. Head Jamb Nailing Fin/Drip Cap, V119
- 2. Head Jamb Weather Strip, V2786
- 3. Parting Stop, W12224
- 4. Sash Lock
- 5. Bottom Check Rail Hardware Cover, V2478
- 6. Top Check Rail Weather Strip, V2803
- 7. Weather Strip, V2779
- 8. IZ3 Sill Reinforcement, A2766
- 9. Sill Thermal Break, V2191

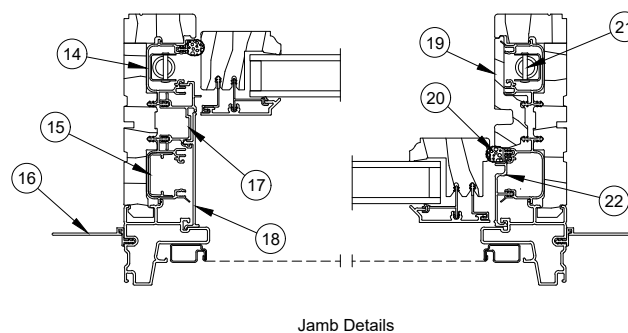
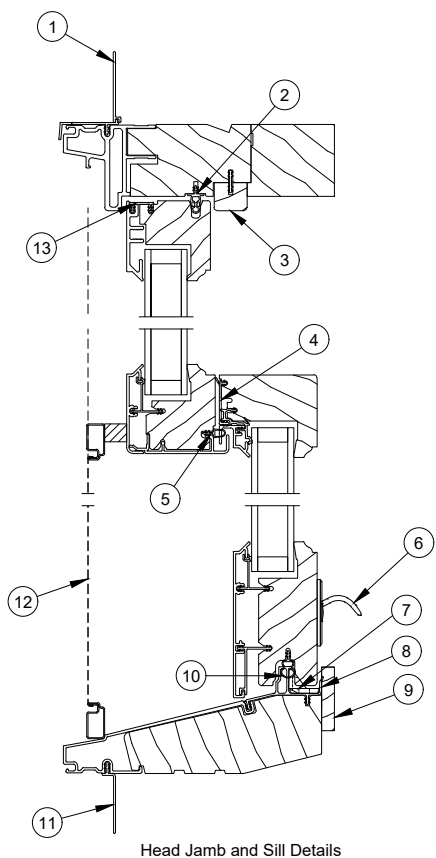
- 10. Sill Liner, W11576
- 11. Sill Nailing Fin, V084
- 12. Full Screen Assembly
- 13. Strike Assembly
- 14. Sash Retainer, V2401
- 15. Bottom Sash Latch Assembly
- 16. Cord Guide Assembly
- 17. Vinyl Jamb Liner, V2655
- 18. Exterior Sash Stop, V2257
- 19. Jamb Nailing Fin, V104
- 20. Mid Cover Base, V2432
- 21. Clad Mid Exterior Cover, A2460
- 22. Exterior Clad Cover, A2615
- 23. Interior Jamb Cover, W11581
- 24. Frame Weather Strip, V2682
- 25. Bottom Sash Balance Tube
- 26. Top Sash Balance Tube
- 27. Exterior Hardware Cover, V2338



- 1. Head Jamb Nailing Fin/Drip Cap, V119
- 2. Head Jamb Weather Strip, V2786
- 3. Parting Stop, W12224
- 4. Sash Lock
- 5. Bottom Check Rail Hardware Cover, V2478
- 6. Top Check Rail Weather Strip, V2803
- 7. Weather Strip, V2779
- 8. Sill Thermal Break, V2191

- 9. Sill Liner, W11576
- 10. Sill Nailing Fin, V084
- 11. Full Screen Assembly
- 12. Strike Assembly
- 13. Sash Connector, V2401
- 14. Bottom Sash Latch Assembly
- 15. Cord Guide Assembly
- 16. Vinyl Jamb Liner, V2655

- 17. Jamb Nailing Fin, V104
- 18. Mid Cover Base, V2432
- 19. Single Hung Exterior Cover, A2700
- 20. Interior Jamb Cover, W11581
- 21. Frame Weather Strip, V2682
- 22. Bottom Sash Balance Tube
- 23. Exterior Hardware Cover, V2338



- 1. Head Jamb Nailing Fin/Drip Cap, V119
- 2. Head Jamb Weather Strip, V2786
- 3. Parting Stop, W12224
- 4. Bottom Check Rail Hardware Cover, V2478
- 5. Top Check Rail Weather Strip, V2803
- 6. Lift Lock
- 7. Lift Lock Strike
- 8. Sill Thermal Break, V2191

- 9. Sill Liner, W11576
- 10. Bottom Rail Weather Strip, V2779
- 11. Sill Nailing Fin, V084
- 12. Half Screen Assembly
- 13. Sash Connector, V2401
- 14. Vinyl Jamb Liner, V2655
- 15. Exterior Sash Stop, V2257

- 16. Jamb Nailing Fin, V104
- 17. Mid Cover Base, V2432
- 18. Single Hung Exterior Cover, A2700
- 19. Interior Jamb Cover, W11581
- 20. Frame Weather Strip, V2682
- 21. Bottom Sash Balance Tube
- 22. Exterior Hardware Cover, V2338

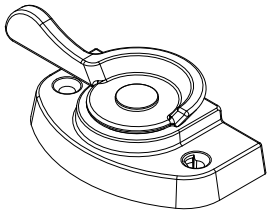
## Tilt/Non-Tilt Lock Handle Kit

### Includes:

- 1- Lock handle
- 2 - #7 x 1 1/4" color match wood screws

Lock Handle Kit	
Color	PN
Bronze	11851402
Satin Taupe	11851400
White	11851401
Antique Brass	11851403
Brass	11851404
Oil Rubbed Bronze	11851405
Polished Chrome	11851406
Satin Chrome	11851407
Satin Nickel	11851408
Matte Black	11851409

Color Matched Screw	
Color	PN
Bronze	11807118
Satin Taupe	11807122
White	11807115
Antique Brass	11807126
Brass	11807120
Oil Rubbed Bronze	11807132
Polished Chrome	11807128
Satin Chrome	11807127
Satin Nickel	11807133
Matte Black	11807137



## Tilt/Non-Tilt Lock Handle Kit - Custodial

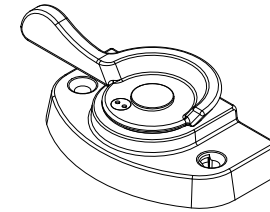
### Includes:

- 1 - Lock handle
- 2 - #7 x 1 1/4" color match wood screws
- 1 - Tamper resistant screw kit

Custodial Lock Handle Kit	
Color	PN
Bronze	11869277
Satin Taupe	11869275
White	11869276
Matte Black	11869278

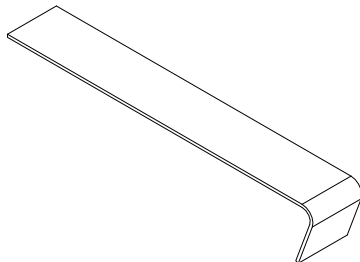
Color Matched Screw	
Color	PN
Bronze	11807118
Satin Taupe	11807122
White	11807115
Matte Black	11807137

Tamper Resistant Screw Kit (each)	
Color	PN
Bronze	11800430
Satin Taupe	11800428
White	11800429
Matte Black	11800432



## Catch Spring

PN
10501214



## Lift Lock Assembly - Custodial

*Ultimate Single Hung G2*

*Ultimate Single Hung Round Top G2*

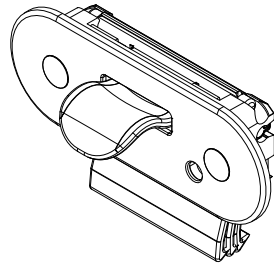
### Uses (not included):

#4 Spanner Bit

1 - Custodial screw kit (color match)

2 - #7x1" Phillips pan head screws

Color	PN
Bronze	10501876
Satin Taupe	10501877
White	10501878
Matte Black	10501879



Suggested Fasteners	
2 - #7 x 1" Phillips pan head screws	11800196

## Lift Lock Assembly - Custodial Screw Kit

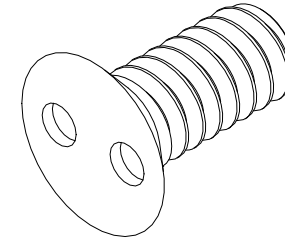
*Ultimate Single Hung G2*

*Ultimate Single Hung Round Top G2*

### Includes:

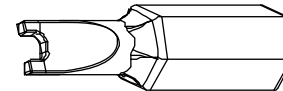
2 - 4-40 flat head machine screws

Color	PN
Bronze	11869256
Satin Taupe	11869254
White	11869255
Matte Black	11869257



## Tool Bit - Tamper Resistant Screw (#4 Spanner Bit)

PN
10500543



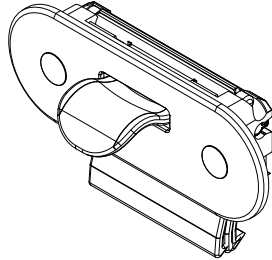
## Lift Lock Assembly - Traditional

*Ultimate Single Hung G2*

*Ultimate Single Hung Round Top G2*

Color	PN
Bronze	10501855
Satin Taupe	10501856
White	10501857
Antique Brass	10501860
Brass	10501861
Oil Rubbed Bronze	10501859
Polished Chrome	10501864
Satin Chrome	10501863
Satin Nickel	10501862
Matte Black	10501858

Suggested Fasteners	
2 - #7 x 1" Phillips pan head screws	11800196



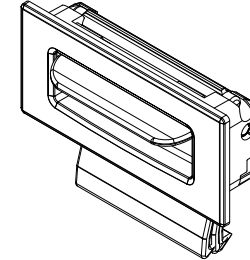
## Lift Lock Assembly - Contemporary

*Ultimate Single Hung G2*

*Ultimate Single Hung Round Top G2*

Color	PN
Bronze	10501866
Satin Taupe	10501867
White	10501868
Antique Brass	10501871
Brass	10501872
Oil Rubbed Bronze	10501870
Polished Chrome	10501875
Satin Chrome	10501874
Satin Nickel	10501873
Matte Black	10501869

Suggested Fasteners	
2 - #7 x 1" Phillips pan head screws	11800196



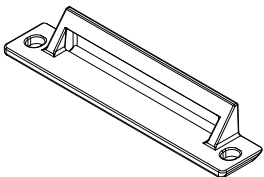
## Lift Lock Sill Strike

*Ultimate Single Hung G2*

*Ultimate Single Hung Round Top G2*

Color	PN
White	10501880
Black	10501881
Beige	10501882

Suggested Fasteners	Color	PN
2 - #7 x 9/16" Phillips pan head screws	White	11800194
	Black	11800193
	Beige	11800195

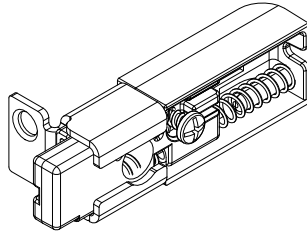


## Bottom Sash Latch Assembly

### Ultimate Double Hung G2

Handing	PN
LH	10501463
RH	10501464

Suggested Fasteners	PN
1 - #6x1" Phillips flat head screw	11800660
1 - #8x1 1/4" Phillips pan head screw	11800557



RH shown

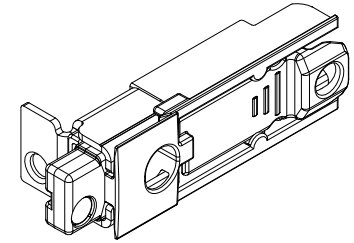
## Bottom Sash Manual Latch Assembly, Lift Lock

### Ultimate Single Hung G2

### Ultimate Single Hung Round Top G2

Color	LH PN	RH PN
Beige	10501508	10501509
White	10501505	10501506
Black	10501511	10501512

Suggested Fasteners	PN
1 - #6x1" Phillips flat head screw	11800660
1 - #8x1 1/4" Phillips pan head screw	11800825
1 - #6x 5/8" Phillips pan head screw	11801625



RH shown

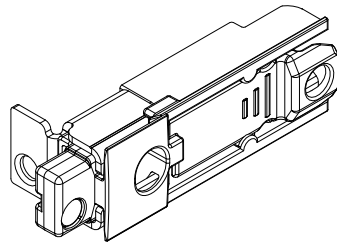
## Bottom Sash Manual Latch Assembly, Lift Lock with Lock Status Sensor

### Ultimate Single Hung G2

### Ultimate Single Hung Round Top G2

Color	PN
Beige	10501510
White	10501507
Black	10501513

Suggested Fasteners	PN
1 - #6x1" Phillips flat head screw	11800660
1 - #8x1 1/4" Phillips pan head screw	11800825
1 - #6x 5/8" Phillips pan head screw	11801625



RH shown



## Top Sash Tilt Latch Assembly

*Ultimate Double Hung G2*

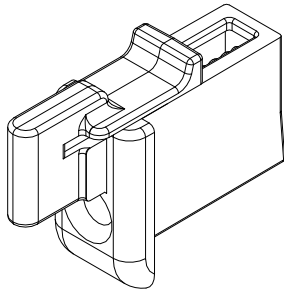
*Ultimate Double Hung DISC LA PRE 4/24/17*

### Product usage:

For units produced after 10/31/2016

Color	PN
Beige	10500779

Suggested Fasteners	PN
1 – #6x1 1/2" Phillips flat head screw	11800133



## Both Sash Stationary Kit

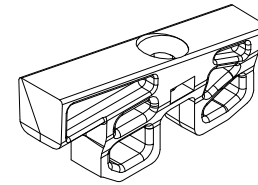
*Ultimate Single Hung G2*

*Ultimate Single Hung Round Top G2*

### Includes:

- 2 – Stop, both sash stationary,
- 2 – #6 x 1 1/4 tamper resistant screw
- 1 – #6 spanner bit
- 1 – Instruction

Color	PN
Beige	11850200
White	11850202
Black	11850201

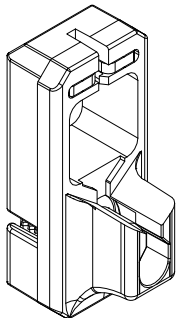


## Clutch Assembly

*Ultimate Double Hung G2*

*Ultimate Double Hung DISC LA PRE 4/24/17*

Color	PN
Black	10501430

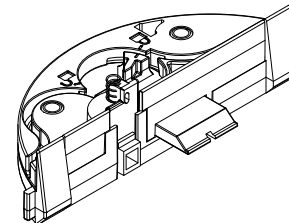


## Cord Guide Assembly Bottom Sash

*Ultimate Double Hung G2*

Lineal length of cord included.

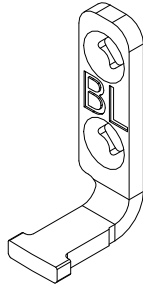
Color	PN
Beige	10501215
White	10501216
Black	10501217



## Bottom Sash Tilt Pin

Handing	PN
LH	10500762
RH	10500763

Suggested Fasteners	PN
2 – #7x1 1/4" Phillips flat head wood screws	11806108

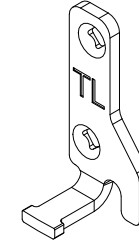


LH shown

## Top Sash Tilt Pin

Handing	PN
LH	10500775
RH	10500776

Suggested Fasteners	PN
2 – #7x3/4" Phillips flat head wood screws	02050321



LH shown

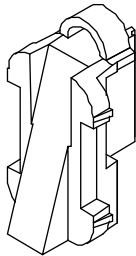
## Bottom Sash Limiter

*Ultimate Double Hung G2*

*Ultimate Double Hung DISC LA PRE 4/24/17*

NOTE: 2 needed per unit

Color	PN
Beige	10501470
Black	10501471
White	10501472



## Jamb Receiver Assembly

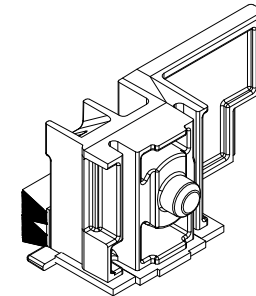
*Ultimate Double Hung G2*

Includes:

Foam Gasket

Pile Weather Strip

Color	Handing	PN
Black	LH	10500765
	RH	10500766



RH shown

## Strike Assembly Kit

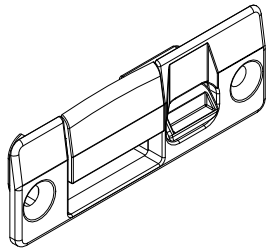
### Ultimate Double Hung G2

#### Includes:

- 1 - Strike base
- 1 - Button
- 2 - Color matched wood screws

Strike Assembly Kit	
Color	PN
Bronze	11851412
Satin Taupe	11851410
White	11851411
Antique Brass	11851413
Brass	11851414
Oil Rubbed Bronze	11851415
Polished Chrome	11851416
Satin Chrome	11851417
Satin Nickel	11851418
Matte Black	11851419

#7 x 7/8" Wood Screw	
Color	PN
Bronze	11807879
Satin Taupe	11807880
White	11807875
Antique Brass	11807883
Brass	11807882
Oil Rubbed Bronze	11807878
Polished Chrome	11807885
Satin Chrome	11807884
Satin Nickel	11807881
Matte Black	11807886



## Sash Lift Kit

### Ultimate Double Hung G2

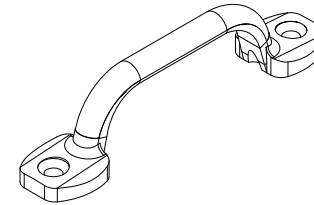
### Ultimate Double Hung DISC LA PRE 4/24/17

#### Includes:

- 1 - Sash lift
- 2 - #8 x 1" slotted oval head sheet metal screws

NOTE: Can not be used with retractable screen.

Color	PN
Bronze	10500557
Satin Taupe	10500598
White	10500556
Antique Brass	10500597
Brass	10500558
Oil Rubbed Bronze	10500601
Polished Chrome	10500595
Satin Chrome	10500596
Satin Nickel	10500602
Matte Black	10500577



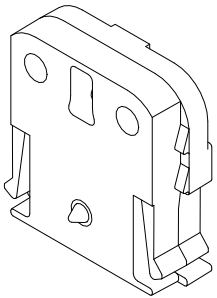
## Exterior Sash Lug Retainer

*Ultimate Double Hung G2*

*Ultimate Double Hung DISC LA PRE 4/24/17*

Color	PN
Black	10500769

Suggested fasteners	PN
1 – #8–15x3/4" Full thread 410 Stainless Steel screw	11800208



## Exterior Sash Lug Kit - Ogee Profile

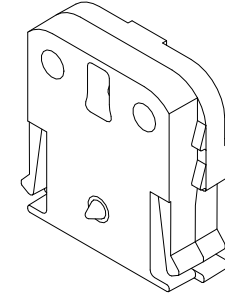
*Ultimate Double Hung G2*

*Ultimate Double Hung DISC LA PRE 4/24/17*

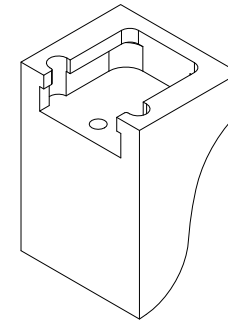
### Includes:

- 2 – Exterior Sash Lugs – Ogee Profile
- 2 – Exterior Sash Lug Retainers
- 2 - #8-15x3/4" Full thread 410 Stainless Steel screws

Color	PN
Sierra White	11894166
Hampton Sage	11894165
Cascade Blue	11894164
Coconut Cream	11894162
Cashmere	11894160
Ebony	11894159
Wineberry	11894157
Stone White	11894155
Evergreen	11894154
Bronze	11894153
Pebble	11894152
Bahama Brown	11894151
Cadet Gray	11894163
Bright Silver	11894168
Copper	11894167
Liberty Bronze	11894171
Clay	11894174
Gunmetal	11894172
Suede	11894173



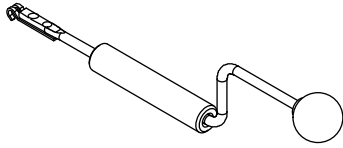
**Exterior Sash Lug Retainers**



**Exterior Sash Lug,  
Ogee Profile**

## Balance Tube Tensioning Tool

PN
05570910



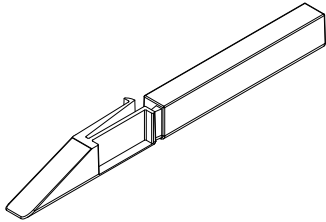
## Non-Tilt Sash Removal Tool Kit

*Ultimate Double Hung G2*  
*Ultimate Double Hung DISC LA PRE 4/24/17*

### Includes:

2 – Non-Tilt Sash Removal Tool

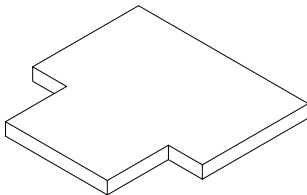
PN
11860094



## Foam Pad Sill

*Ultimate Double Hung G2*  
*Ultimate Double Hung DISC LA PRE 4/24/17*

Color	PN
Black	15350024



## Sash Installation Kit

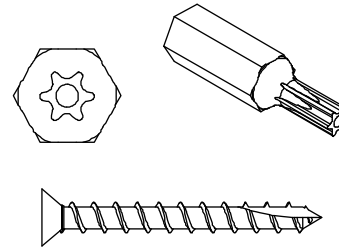
*Ultimate Double Hung G2*  
*Ultimate Double Hung DISC LA PRE 4/24/17*

NOTE: For use with A3077 Exterior Filler

### Includes:

24 – #9x1 5/8" Torx flat head screws  
 1 – T-20 Insert Bit  
 1 – Instruction

PN
11869268



## Sash Installation Kit

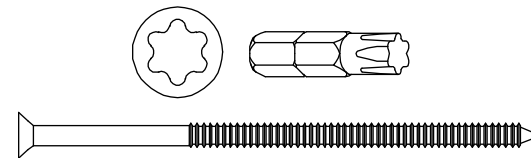
*Ultimate Double Hung Picture G2*  
*Ultimate Double Hung Picture DISC LA PRE 4/24/17*

NOTE: For use with A2681 Exterior Filler

### Includes:

24 – #9x3" Torx flat head screws  
 1 – T-25 Insert Bit  
 1 – Instruction

PN
11869261



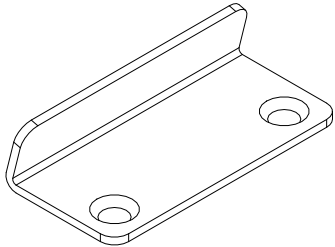
## Transom Sill Bracket

*Ultimate Double Hung G2*

*Ultimate Double Hung DISC LA PRE 4/24/17*

Color	PN
Stainless Steel	10500768

Suggested fasteners	PN
2 – #7x3/4" Phillips flat head screw	02050321



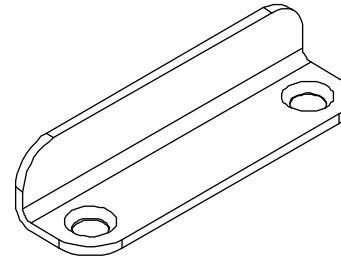
## IZ3/RT Picture/Transom Sill Bracket

*Ultimate Double Hung G2*

*Ultimate Double Hung DISC LA PRE 4/24/17*

Color	PN
Stainless Steel	10500764

Suggested fasteners	PN
2 – #7x3/4" Phillips flat head screw	02050321

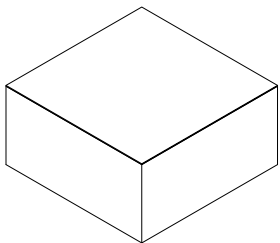


## Jamb Filler Foam

*Ultimate Double Hung G2*

*Ultimate Double Hung DISC LA PRE 4/24/17*

Length	Color	PN
Specify LF	Black	15350016

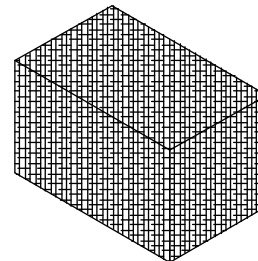


## Reticulated Foam Block

*Ultimate Double Hung G2*

For use with reinforced check rail

Length	Color	PN
1 1/2"	Charcoal	10500366



## Lock Handle Assembly

Ultimate Double Hung DISC LA PRE 4/24/17

Color	PN
Bronze	10501082
Satin Taupe	10501083
White	10501084
Antique Brass	10501085
Brass	10501086
Oil Rubbed Bronze	10501087
Polished Chrome	NA
Satin Chrome	10501089
Satin Nickel	10501090
Matte Black	NA

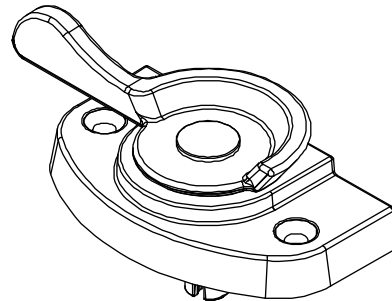
Suggested fasteners
2 – #7x1 1/4" Phillips flat head screw

## Lock Handle Assembly - Non Tilt

Ultimate Double Hung DISC LA PRE 4/24/17

Color	PN
Bronze	NA
Satin Taupe	10501074
White	10501075
Antique Brass	10501076
Brass	10501077
Oil Rubbed Bronze	10501078
Polished Chrome	10501079
Satin Chrome	NA
Satin Nickel	10501081
Matte Black	10501069

Suggested fasteners
2 – #7x1 1/4" Phillips flat head screw



## Lock Handle Kit - Custodial

*Ultimate Double Hung DISC LA PRE 4/24/17*

### Includes:

- 1 - Custodial tilt lock handle assembly
- 2 - #7-19 x 1 1/4" Phillips flat head screws
- 1 - Tamper resistant screw kit

Color	PN
Satin Taupe	11869262
White	11869263
Bronze	11869264

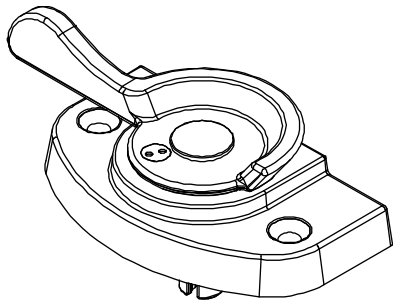
## Lock Handle Kit - Custodial Non Tilt

*Ultimate Double Hung DISC LA PRE 4/24/17*

### Includes:

- 1 - Custodial non-tilt lock handle assembly
- 2 - #7-19 x 1 1/4" Phillips flat head screws
- 1 - Tamper resistant screw kit

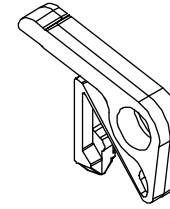
Color	PN
Satin Taupe	11869265
White	NA
Bronze	11869267



## Catch, Sash Lock

*Ultimate Double Hung DISC LA PRE 4/24/17*

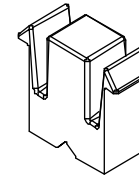
PN
10501213



## Lock, Plunger Cap

*Ultimate Double Hung DISC LA PRE 4/24/17*

Color	PN
Black	10500868





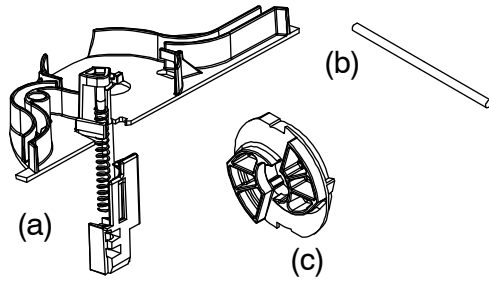
## Cord Guide Assembly Kit

Ultimate Double Hung DISC LA PRE 4/24/17

### Includes:

- 1 – Cord guide assembly (a)
- 1 – Operating cord (b)
- 1 – Large spool (c)

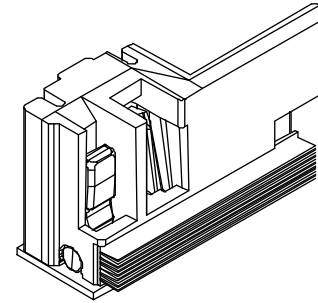
PN
11851052



## Jamb Receiver Assembly

Ultimate Double Hung DISC LA PRE 4/24/17

Color	Handing	PN
Black	LH	10500755
	RH	10500754

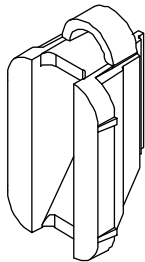


LH shown

## Vent Receiver

Ultimate Double Hung DISC LA PRE 4/24/17

Color	PN
Beige	10501377
White	10501379
Black	10501378

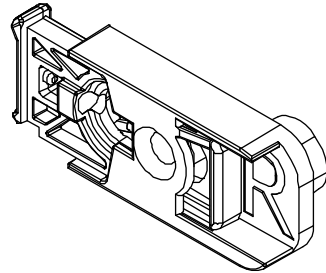


## Top Sash Latch Assembly

Ultimate Double Hung DISC LA PRE 4/24/17

Color	Handing	PN
Beige	LH	10501395
	RH	10501396

Suggested Fasteners
1 – #7x7/8" Phillips flathead wood screw



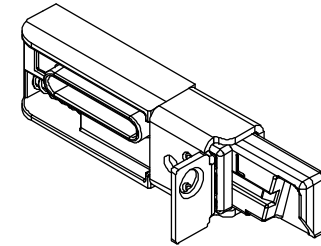
RH shown

## Bottom Sash Latch Assembly

Ultimate Double Hung DISC LA PRE 4/24/17

Handing	PN
LH	10501407
RH	10501406

Suggested Fasteners
1 – #6x1" Phillips flat head screw
1 – #8x1 1/4" Phillips pan head screw



LH shown

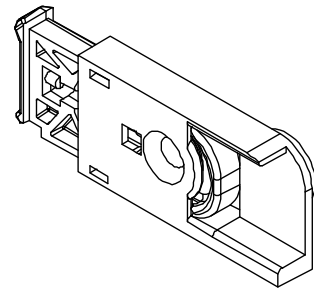
## Top Sash Latch Assembly

Product usage:

Pre 9/29/2014

Color	Handing	PN
Beige	LH	10500757
	RH	10500758

Suggested Fastener
1 – #7x7/8" Phillips flathead wood screw



RH shown

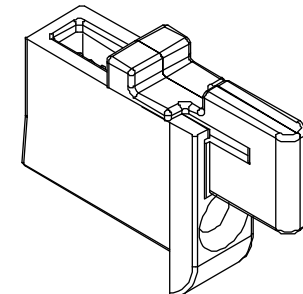
## Top Sash Tilt Latch Assembly

Product usage:

Pre 10/31/2016

Color	PN
Beige	10500738

Suggested Fastener
1 – #6x1 1/2" Phillips flat head screw



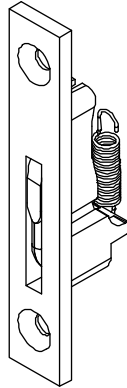
## Top Sash Tilt Latch Assembly

*Ultimate Double Hung Round Top G2*

*Ultimate Double Hung Round Top G1 DISC LA PRE 4/24/17*

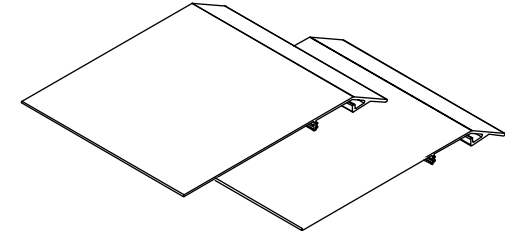
PN
10500713

Suggested fasteners	PN
2 – #7-19 x 5/8" Phillips flat head screws	11800736



## Clad Ultimate Double Hung Round Top Tilt Jig - Top Sash

Qty	PN
1	15350014
2	11869285



## Spacer

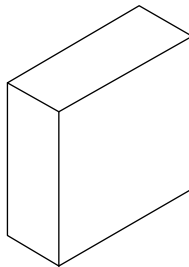
*Ultimate Double Hung Picture Round Top G2*

*Ultimate Double Hung Transom Round Top G2*

*Ultimate Double Hung Picture Round Top G1 DISC LA PRE 4/24/17*

*Ultimate Double Hung Transom Round Top G1 DISC LA PRE 4/24/17*

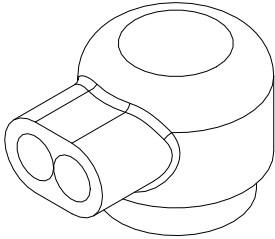
Color	PN
Clear	15350023



## Wire Connector, IDC

NOTE: Holes sized for 22AWG Wire

PN
10501825

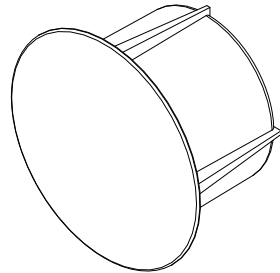


## Magnet Housing Assembly

### Includes:

- 1– Magnet 1/4" x 1/8" N42
- 1– Magnet Housing

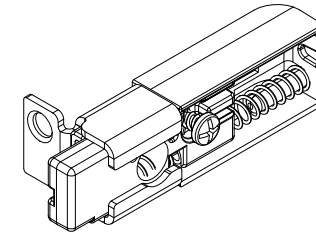
Color	PN
Black	10501834
White	10501835



## Bottom Sash Latch Assembly

Used to make compatible with Lock Status Sensor. Cannot be purchased separately, must be included in the assembled version.

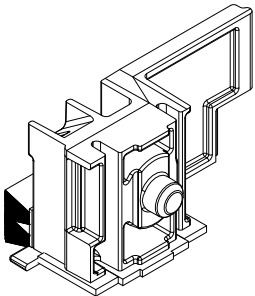
Handing	PN
RH only	10501474



RH shown

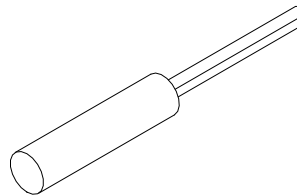
## Jamb Receiver, Firecracker

Handing	Color	PN
RH only	Black	10500719



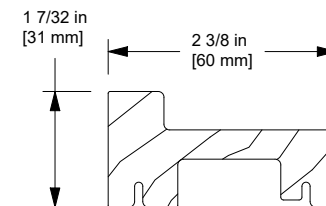
## .245 x 1.000 Firecracker Reed Switch

Length	Color	PN
12"	Black	10501826
72"		10501827



## When ordering Wood Replacement Parts, specify:

1. Profile number
2. Unit type
3. Length
4. Finish
5. Species (if applicable)



Lock Status Sensor  
Transmitter Cover, W12982

NOTE: For windows without factory-applied WOCD, refer to Product Bulletin 758 for more information.

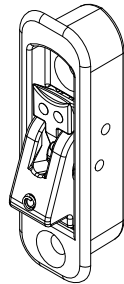
## WOCD Field Applied and Replacement Kit, Top Sash

### *Ultimate Double Hung and Single Hung G2*

#### Includes:

- 2 – WOCD Assembly
- 4 – #8 x 1" Phillips flat head screw, full thread
- 1 – WOCD Safety information
- 1 – WOCD Field applied instructions
- 1 – WOCD Hang tag

Color	PN
Satin Taupe	11850690
White	11850691
Bronze	11850692
Brass	11850693
Antique Brass	11850694
Polished Chrome	11850695
Satin Chrome	11850696
Oil Rubbed Bronze	11850697
Satin Nickel	11850698
Matte Black	11850700



## WOCD Field Applied and Replacement Kit, Complete

### *Ultimate Double Hung and Single Hung G2*

#### Includes:

- 2 – WOCD Assembly
- 4 – #8 x 1" Phillips flat head screw, full thread
- 1 – WOCD Safety Information
- 1 – WOCD Field applied instructions
- 1 – WOCD Hang tag
- 1 – WOCD Sticker
- 1 – WOCD Bumper, RH, bottom check rail
- 1 – WOCD Bumper, LH, bottom check rail

WOCD Color	Bumper Color and Part Number		
	White	Beige	Black
Satin Taupe	11851530	11851540	11851550
White	11851531	11851541	11851551
Bronze	11851532	11851542	11851552
Brass	11851533	11851543	11851553
Antique Brass	11851534	11851544	11851554
Polished Chrome	11851535	11851545	11851555
Satin Chrome	11851536	11851546	11851556
Oil Rubbed Bronze	11851537	11851547	11851557
Satin Nickel	11851538	11851548	11851558
Matte Black	11851539	11851549	11851559

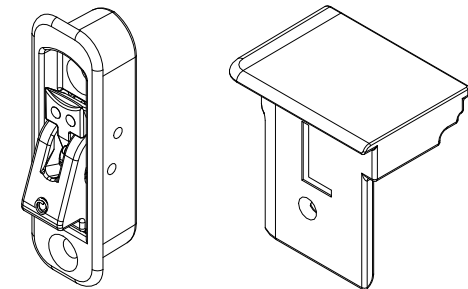
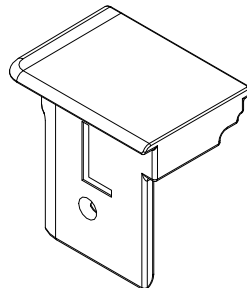
## WOCD Field Applied and Replacement Kit, Bottom Sash

### *Ultimate Double Hung and Single Hung G2*

#### Includes:

- 1 – WOCD Bumper, RH, bottom check rail
- 1 – WOCD Bumper, LH, bottom check rail
- 1 – WOCD Safety information
- 1 – WOCD Field applied instructions
- 1 – WOCD Hang tag
- 1 – WOCD Sticker

Bumper Color	PN
White	11850706
Beige	11850707
Black	11850708



# Vinyl Jamb Liner

V2655

NOTE: For units with retractable screens subtract 2" from Finish Overall height for the interior pieces.

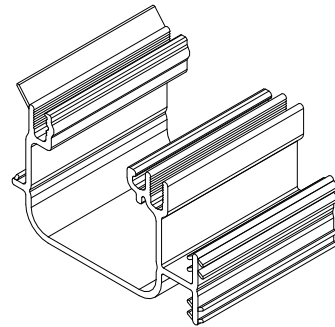
## To order replacement (use all that apply):

1. Provide the original order number when possible
2. Color
3. Quantity
4. Glass height one sash (daylight opening + 1.25 for the height = glass height)
5. Measure both sash of they are not equal size.

NOTE: If experiencing operational difficulties please contact your Marvin Representative. Standard size CN units may be ordered by part number from the chart.

Standard Unit				
CN	Finish Overall Height	Beige PN	White PN	Black PN
14	32.512"	15369214	15369314	15369414
16	36.512"	15369216	15369316	15369416
18	40.512"	15369218	15369318	15369418
20	44.512"	15369220	15369320	15369420
22	48.512"	15369222	15369322	15369422
24	52.512"	15369224	15369324	15369424
26	56.512"	15369226	15369326	15369426
28	60.512"	15369228	15369328	15369428
30	64.512"	15369230	15369330	15369430
32	68.512"	15369232	15369332	15369432
34	72.512"	15369234	15369334	15369434
36	76.512"	15369236	15369336	15369436
40	84.512"	15369240	15369340	15369440
44	92.512"	15369244	15369344	15369444
48	100.512"	15369248	15369348	15369448
56	116.512"	15369256	15369356	15369456
Lineal	130"	15369299	15369399	15369499

Transom Unit		
CN	Finish Overall Height	Beige PN
12	16.7"	15369512
20	24.7"	15369520

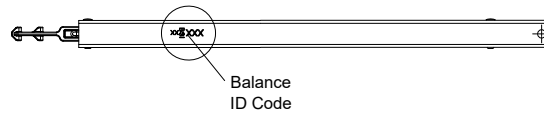


**Block and Tackle balance tubes with ID Code can be ordered by part number (see chart below).**

1. Provide the original order number when possible. The ID code is imprinted on the tube (see illustration).
2. Specify top or bottom sash.
3. Specify quantity. Do NOT specify as pairs or sets. If one tube is needed, specify: quantity 1. If two tubes are needed, specify: quantity 2.

NOTE: Before ordering replacement balance tubes, please contact Marvin Inside Sales or a Customer Care Service Agent to have the balances recalculated.

NOTE: 36CD replaces 36C; 24ED replaces 24E.



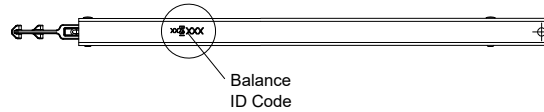
**Balance Tube Assembly Part Numbers - Block and Tackle - Post 4/30/2018**

Balance ID Code	Part #	Balance ID Code	Part #	Balance ID Code	Part #	Balance ID Code	Part #	Balance ID Code	Part #	Balance ID Code	Part #	Balance ID Code	Part #
A		B		C		D		E		F		G	
8A	10705008	8B	10705108	8C	10705208	16D	10710316	8E	10705408	28F	10710528	12G	10705616
12A	10705012	12B	10705112	12C	10705212	20D	10710320	12E	10705412	36F	10705536	24G	10710624
20A	10705020	16B	10705116	16C	10705216	32D	10710332	16E	10705416	<b>FNU</b>		32G	10705632
24A	10705024	24B	10705124	24C	10705224	40D	10710340	20E	10710420	12FNU	10709512	<b>H</b>	
36A	10705036	28B	10705128	32C	10710232	44D	10710344	40E	10710440			20H	10705720
44A	10705044	32B	10705132	44C	10705244	48D	10710348	48E	10710448				
52A	10705052	36B	10705136	52C	10705252	52D	10710352	<b>ED</b>					
<b>AN</b>		48B	10705148	54C	10705254	<b>DD</b>		16ED	10711416				
16AN	10709016	52B	10705152	<b>CD</b>		28DD	10711628	20ED	10711420				
28AN	10709028	54B	10705154	36CD	10705236	<b>DN</b>		24ED	10710424				
32AN	10709032	<b>BN</b>		<b>CN</b>		28DN	10711325						
36AN	10709036	20BN	10709120	20CN	10711220	<b>DR</b>							
40AN	10709040	36BN	10709136	24CN	10711224	24DR	10711524						
48AN	10709048	40BN	10709140	28CN	10711228								
		44BN	10709144										
		48BN	10709148										

# Ultimate Double Hung DISC LA Pre 4/24/17

Block and Tackle balance tubes with ID Code can ONLY be ordered by contacting your Marvin Representative. Use the table below for reference only.

If experiencing operational difficulties please contact your Marvin Representative.



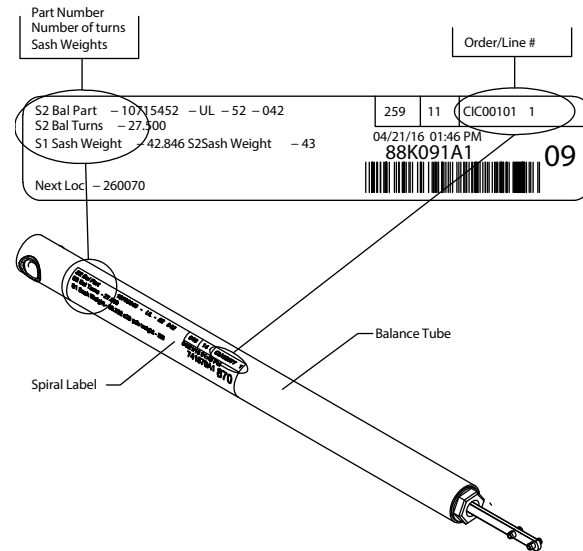
Balance Tube Assembly Part Numbers - Block and Tackle - Pre 1/26/2015 - Discontinued											
Balance ID Code	Part #	Balance ID Code	Part #	Balance ID Code	Part #	Balance ID Code	Part #	Balance ID Code	Part #	Balance ID Code	Part #
<b>A</b>		<b>B</b>		<b>C</b>		<b>D</b>		<b>E</b>		<b>F</b>	
12A	10705012	20B	10705120	20C	10705220	12D	10705312	12E	10705412	16F	10705516
16A	10705016	24B	10705124	24C	10705224	16D	10705316	20E	10705420	24F	10705524
20A	10705020	36B	10705136	28C	10705228	20D	10705320	24E	10705424	<b>G</b>	
24A	10705024	40B	10705140	32C	10705232	24D		28E	10705428	24G	10705624
28A	10705028	44B	10705144	36C	10705236	28D	10705328	<b>EN</b>		<b>H</b>	
32A	10705032	48B	10705148	40C	10705240	32D	10705332	20EN	10709420	16H	10705716
36A	10705036	<b>BN</b>		44 C	10705244	36D	10705336	28EN	10709428	<b>I</b>	
40A	10705040	12BN	10709112	48C	1705248	40D	10705340			16I	10705816
44A	10705044			<b>CN</b>		44D	10705344				
48A	10705048			16CN	10709216	48D	10705348				
				20CN	10709220	54D	10705354				
				24CN	10709224	<b>DN</b>					
				28CN	10709228	16DN	10709316				
				32CN	10709232	20DN	10709320				
						28DN	10709328				



**The following info should be used to order ALL balances. Please add/fill in applicable info by product and options.**

1. Unit size - RO, IO, GS ,CN - Width X Height / Equal Sash or Cottage
2. Balance for top sash
  - Specify quantity. Do NOT specify as pairs or sets.
3. Balance for bottom sash
  - Specify quantity. Do NOT specify as pairs or sets.
4. Glass Makeup (thickness of glass - if mixed panes, i.e. 3/16" and 1/8")
5. IG - 1 Lite
6. SDL (with or no spacer) / ADL / GBG - Lite Cuts
7. Wood species of the sash, if other than Pine
8. Sill angle if Insert product
9. Retractable screen (NG 1.0 and G2 product only)
10. Refer to original Marvin order number/line number
11. If unable to provide the above, provide as much info as possible
  - Sash weight for top and/or bottom sash

**Original Spiral Balance Tube Label Information**



**NOTE: Before ordering replacement balance tubes, please contact Marvin Inside Sales or a Customer Care Service Agent to have the balances recalculated.**

Part Number	Balance ID Code	Length (In)
10715008	8-24	8
10715009	9-24	9
10715010	10-24	10
10715011	11-24	11
10715012	12-24	12
10715013	13-24	13
10715014	14-24	14
10715015	15-24	15
10715016	16-24	16
10715017	17-24	17
10715018	18-24	18
10715019	19-24	19
10715020	20-24	20
10715108	8-28	8
10715109	9-28	9
10715110	10-28	10
10715111	11-28	11
10715112	12-28	12
10715113	13-28	13
10715114	14-28	14
10715115	15-28	15
10715116	16-28	16
10715117	17-28	17
10715118	18-28	18
10715119	19-28	19
10715120	20-28	20

Part Number	Balance ID Code	Length (In)
10715208	8-32	8
10715209	9-32	9
10715210	10-32	10
10715211	11-32	11
10715212	12-32	12
10715213	13-32	13
10715214	14-32	14
10715215	15-32	15
10715216	16-32	16
10715217	17-32	17
10715218	18-32	18
10715219	19-32	19
10715220	20-32	20
10715309	9-37	9
10715310	10-37	10
10715311	11-37	11
10715312	12-37	12
10715313	13-37	13
10715314	14-37	14
10715315	15-37	15
10715316	16-37	16
10715317	17-37	17
10715318	18-37	18
10715319	19-37	19
10715320	20-37	20

Part Number	Balance ID Code	Length (In)
10715410	10-42	10
10715411	11-42	11
10715412	12-42	12
10715413	13-42	13
10715414	14-42	14
10715415	15-42	15
10715416	16-42	16
10715417	17-42	17
10715418	18-42	18
10715419	19-42	19
10715420	20-42	20
10715421	21-42	21
10715422	22-42	22
10715423	23-42	23
10715424	24-42	24
10715425	25-42	25
10715426	26-42	26
10715427	27-42	27
10715428	28-42	28
10715429	29-42	29
10715430	30-42	30
10715431	31-42	31
10715432	32-42	32
10715433	33-42	33
10715434	34-42	34
10715435	35-42	35

Part Number	Balance ID Code	Length (In)
10715436	36-42	36
10715437	37-42	37
10715438	38-42	38
10715439	39-42	39
10715440	40-42	40
10715441	41-42	41
10715442	42-42	42
10715443	43-42	43
10715444	44-42	44
10715445	45-42	45
10715446	46-42	46
10715447	47-42	47
10715448	48-42	48
10715449	49-42	49
10715450	50-42	50
10715451	51-42	51
10715452	52-42	52
10715453	53-42	53
10715454	54-42	54
10715455	55-42	55
10715456	56-42	56
10715457	57-42	57
10715458	58-42	58
10715459	59-42	59
10715460	60-42	60

**NOTE: Before ordering replacement balance tubes, please contact Marvin Inside Sales or a Customer Care Service Agent to have the balances recalculated.**

Part Number	Balance ID Code	Length (In)
10715512	12-47	12
10715513	13-47	13
10715514	14-47	14
10715515	15-47	15
10715516	16-47	16
10715517	17-47	17
10715518	18-47	18
10715519	19-47	19
10715520	20-47	20
10715521	21-47	21
10715522	22-47	22
10715523	23-47	23
10715524	24-47	24
10715525	25-47	25
10715526	26-47	26
10715527	27-47	27
10715528	28-47	28
10715529	29-47	29
10715530	30-47	30
10715531	31-47	31
10715532	32-47	32
10715533	33-47	33
10715534	34-47	34
10715535	35-47	35
10715536	36-47	36

Part Number	Balance ID Code	Length (In)
10715537	37-47	37
10715538	38-47	38
10715539	39-47	39
10715540	40-47	40
10715541	41-47	41
10715542	42-47	42
10715543	43-47	43
10715544	44-47	44
10715545	45-47	45
10715546	46-47	46
10715547	47-47	47
10715548	48-47	48
10715549	49-47	49
10715550	50-47	50
10715551	51-47	51
10715552	52-47	52
10715553	53-47	53
10715554	54-47	54
10715555	55-47	55
10715556	56-47	56
10715557	57-47	57
10715558	58-47	58
10715559	59-47	59
10715560	60-47	60

Part Number	Balance ID Code	Length (In)
10715612	12-51	12
10715613	13-51	13
10715614	14-51	14
10715615	15-51	15
10715616	16-51	16
10715617	17-51	17
10715618	18-51	18
10715619	19-51	19
10715620	20-51	20
10715621	21-51	21
10715622	22-51	22
10715623	23-51	23
10715624	24-51	24
10715625	25-51	25
10715626	26-51	26
10715627	27-51	27
10715628	28-51	28
10715629	29-51	29
10715630	30-51	30
10715631	31-51	31
10715632	32-51	32
10715633	33-51	33
10715634	34-51	34
10715635	35-51	35
10715636	36-51	36

Part Number	Balance ID Code	Length (In)
10715637	37-51	37
10715638	38-51	38
10715639	39-51	39
10715640	40-51	40
10715641	41-51	41
10715642	42-51	42
10715643	43-51	43
10715644	44-51	44
10715645	45-51	45
10715646	46-51	46
10715647	47-51	47
10715648	48-51	48
10715649	49-51	49
10715650	50-51	50
10715651	51-51	51
10715652	52-51	52
10715653	53-51	53
10715654	54-51	54
10715655	55-51	55
10715656	56-51	56
10715657	57-51	57
10715658	58-51	58
10715659	59-51	59
10715660	60-51	60

**NOTE: Before ordering replacement balance tubes, please contact Marvin Inside Sales or a Customer Care Service Agent to have the balances recalculated.**

Part Number	Balance ID Code	Length (In)
10715715	15-56	15
10715716	16-56	16
10715717	17-56	17
10715718	18-56	18
10715719	19-56	19
10715720	20-56	20
10708321	21-56	21
10708322	22-56	22
10708323	23-56	23
10708324	24-56	24
10708325	25-56	25
10708326	26-56	26
10708327	27-56	27
10708328	28-56	28
10708329	29-56	29
10708330	30-56	30
10708331	31-56	31
10708332	32-56	32
10708333	33-56	33
10708334	34-56	34
10708335	35-56	35
10708336	36-56	36
10708337	37-56	37

Part Number	Balance ID Code	Length (In)
10708338	38-56	38
10708339	39-56	39
10708340	40-56	40
10708341	41-56	41
10708342	42-56	42
10708343	43-56	43
10708344	44-56	44
10708345	45-56	45
10708346	46-56	46
10708347	47-56	47
10708348	48-56	48
10708349	49-56	49
10708350	50-56	50
10708351	51-56	51
10708352	52-56	52
10708353	53-56	53
10708354	54-56	54
10708355	55-56	55
10708356	56-56	56
10708357	57-56	57
10708358	58-56	58
10708359	59-56	59
10708360	60-56	60

Part Number	Balance ID Code	Length (In)
10715816	16-61	16
10715817	17-61	17
10715818	18-61	18
10715819	19-61	19
10715820	20-61	20
10706721	21-61	21
10706722	22-61	22
10706723	23-61	23
10706724	24-61	24
10706725	25-61	25
10706726	26-61	26
10706727	27-61	27
10706728	28-61	28
10706729	29-61	29
10706730	30-61	30
10706731	31-61	31
10706732	32-61	32
10706733	33-61	33
10706734	34-61	34
10706735	35-61	35
10706736	36-61	36
10706737	37-61	37
10706738	38-61	38

Part Number	Balance ID Code	Length (In)
10706739	39-61	39
10706740	40-61	40
10706741	41-61	41
10706742	42-61	42
10706743	43-61	43
10706744	44-61	44
10706745	45-61	45
10706746	46-61	46
10706747	47-61	47
10706748	48-61	48
10706749	49-61	49
10706750	50-61	50
10706751	51-61	51
10706752	52-61	52
10706753	53-61	53
10706754	54-61	54
10706755	55-61	55
10706756	56-61	56
10706757	57-61	57
10706758	58-61	58
10706759	59-61	59
10706760	60-61	60

**NOTE: Before ordering replacement balance tubes, please contact Marvin Inside Sales or a Customer Care Service Agent to have the balances recalculated.**

Part Number	Balance ID Code	Length (In)
10715917	17-66	17
10715918	18-66	18
10715919	19-66	19
10715920	20-66	20
10706821	21-66	21
10706822	22-66	22
10706823	23-66	23
10706824	24-66	24
10706825	25-66	25
10706826	26-66	26
10706827	27-66	27
10706828	28-66	28
10706829	29-66	29
10706830	30-66	30
10706831	31-66	31
10706832	32-66	32
10706833	33-66	33
10706834	34-66	34
10706835	35-66	35
10706836	36-66	36
10706837	37-66	37
10706838	38-66	38

Part Number	Balance ID Code	Length (In)
10706839	39-66	39
10706840	40-66	40
10706841	41-66	41
10706842	42-66	42
10706843	43-66	43
10706844	44-66	44
10706845	45-66	45
10706846	46-66	46
10706847	47-66	47
10706848	48-66	48
10706849	49-66	49
10706850	50-66	50
10706851	51-66	51
10706852	52-66	52
10706853	53-66	53
10706854	54-66	54
10706855	55-66	55
10706856	56-66	56
10706857	57-66	57
10706858	58-66	58
10706859	59-66	59
10706860	60-66	60

Part Number	Balance ID Code	Length (In)
10716020	20-71	20
10706921	21-71	21
10706922	22-71	22
10706923	23-71	23
10706924	24-71	24
10706925	25-71	25
10706926	26-71	26
10706927	27-71	27
10706928	28-71	28
10706929	29-71	29
10706930	30-71	30
10706931	31-71	31
10706932	32-71	32
10706933	33-71	33
10706934	34-71	34
10706935	35-71	35
10706936	36-71	36
10706937	37-71	37
10706938	38-71	38
10706939	39-71	39

Part Number	Balance ID Code	Length (In)
10706940	40-71	40
10706941	41-71	41
10706942	42-71	42
10706943	43-71	43
10706944	44-71	44
10706945	45-71	45
10706946	46-71	46
10706947	47-71	47
10706948	48-71	48
10706949	49-71	49
10706950	50-71	50
10706952	52-71	52
10706953	53-71	53
10706954	54-71	54
10706955	55-71	55
10706956	56-71	56
10706957	57-71	57
10706958	58-71	58
10706959	59-71	59
10706960	60-71	60

**NOTE: Before ordering replacement balance tubes, please contact Marvin Inside Sales or a Customer Care Service Agent to have the balances recalculated.**

Part Number	Balance ID Code	Length (In)
10707022	22-78	22
10707023	23-78	23
10707024	24-78	24
10707025	25-78	25
10707026	26-78	26
10707027	27-78	27
10707028	28-78	28
10707029	29-78	29
10707030	30-78	30
10707031	31-78	31
10707032	32-78	32
10707033	33-78	33
10707034	34-78	34
10707035	35-78	35
10707036	36-78	36
10707037	37-78	37
10707038	38-78	38
10707039	39-78	39
10707040	40-78	40
10707041	41-78	41
10707042	42-78	42
10707043	43-78	43

Part Number	Balance ID Code	Length (In)
10707044	44-78	44
10707045	45-78	45
10707046	46-78	46
10707047	47-78	47
10707048	48-78	48
10707049	49-78	49
10707050	50-78	50
10707051	51-78	51
10707052	52-78	52
10707053	53-78	53
10707054	54-78	54
10707055	55-78	55
10707056	56-78	56
10707057	57-78	57
10707058	58-78	58
10707059	59-78	59
10707060	60-78	60

**NOTE: Before ordering replacement balance tubes, please contact Marvin Inside Sales or a Customer Care Service Agent to have the balances recalculated.**

Part Number	Balance ID Code	Length (In)
10716129	29-84	29
10716130	30-84	30
10716131	31-84	31
10716132	32-84	32
10707133	33-84	33
10707134	34-84	34
10707135	35-84	35
10707136	36-84	36
10707137	37-84	37
10707138	38-84	38
10707139	39-84	39
10707140	40-84	40
10707141	41-84	41
10707142	42-84	42
10707143	43-84	43
10707144	44-84	44
10707145	45-84	45
10707146	46-84	46
10707147	47-84	47
10707148	48-84	48
10707149	49-84	49
10707150	50-84	50
10707151	51-84	51
10707152	52-84	52
10707153	53-84	53
10707154	54-84	54
10707155	55-84	55
10707156	56-84	56
10707157	57-84	57
10707158	58-84	58
10707159	59-84	59
10707160	60-84	60

Part Number	Balance ID Code	Length (In)
10716229	29-94	29
10716230	30-94	30
10716231	31-94	31
10716232	32-94	32
10707233	33-94	33
10707234	34-94	34
10707235	35-94	35
10707236	36-94	36
10707237	37-94	37
10707238	38-94	38
10707239	39-94	39
10707240	40-94	40
10707241	41-94	41
10707242	42-94	42
10707243	43-94	43
10707244	44-94	44
10707245	45-94	45
10707246	46-94	46
10707247	47-94	47
10707248	48-94	48
10707249	49-94	49
10707250	50-94	50
10707251	51-94	51
10707252	52-94	52
10707253	53-94	53
10707254	54-94	54
10707255	55-94	55
10707256	56-94	56
10707257	57-94	57
10707258	58-94	58
10707259	59-94	59
10707260	60-94	60

Part Number	Balance ID Code	Length (In)
10716330	30-105	30
10716331	31-105	31
10716332	32-105	32
10707333	33-105	33
10707334	34-105	34
10707335	35-105	35
10707336	36-105	36
10707337	37-105	37
10707338	38-105	38
10707339	39-105	39
10707340	40-105	40
10707341	41-105	41
10707342	42-105	42
10707343	43-105	43
10707344	44-105	44
10707345	45-105	45
10707346	46-105	46
10707347	47-105	47
10707348	48-105	48
10707349	49-105	49
10707350	50-105	50
10707351	51-105	51
10707352	52-105	52
10707353	53-105	53
10707354	54-105	54
10707355	55-105	55
10707356	56-105	56
10707357	57-105	57
10707358	58-105	58
10707359	59-105	59
10707360	60-105	60

**NOTE: Before ordering replacement balance tubes, please contact Marvin Inside Sales or a Customer Care Service Agent to have the balances recalculated.**

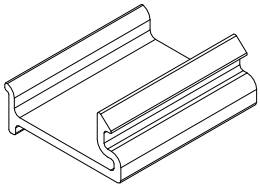
Part Number	Balance ID Code	Length (In)
10716430	30-117	30
10716431	31-117	31
10716432	32-117	32
10707433	33-117	33
10707434	34-117	34
10707435	35-117	35
10707436	36-117	36
10707437	37-117	37
10707438	38-117	38
10707439	39-117	39
10707440	40-117	40
10707441	41-117	41
10707442	42-117	42
10707443	43-117	43
10707444	44-117	44
10707445	45-117	45
10707446	46-117	46
10707447	47-117	47
10707448	48-117	48
10707449	49-117	49
10707450	50-117	50
10707451	51-117	51
10707452	52-117	52
10707453	53-117	53
10707454	54-117	54
10707455	55-117	55
10707456	56-117	56
10707457	57-117	57
10707458	58-117	58
10707459	59-117	59
10707460	60-117	60

Part Number	Balance ID Code	Length (In)
10716530	30-128	30
10716531	31-128	31
10716532	32-128	32
10707533	33-128	33
10707534	34-128	34
10707535	35-128	35
10707536	36-128	36
10707537	37-128	37
10707538	38-128	38
10707539	39-128	39
10707540	40-128	40
10707541	41-128	41
10707542	42-128	42
10707543	43-128	43
10707544	44-128	44
10707545	45-128	45
10707546	46-128	46
10707547	47-128	47
10707548	48-128	48
10707549	49-128	49
10707550	50-128	50
10707551	51-128	51
10707552	52-128	52
10707553	53-128	53
10707554	54-128	54
10707555	55-128	55
10707556	56-128	56
10707557	57-128	57
10707558	58-128	58
10707559	59-128	59
10707560	60-128	60

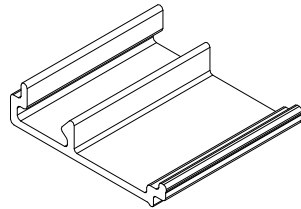


**To order, specify:**

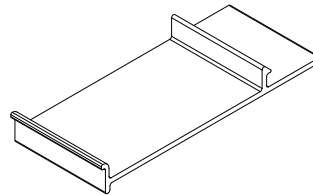
1. Original order/line number
2. Profile number
3. Length
4. Call number or rough opening
5. Color



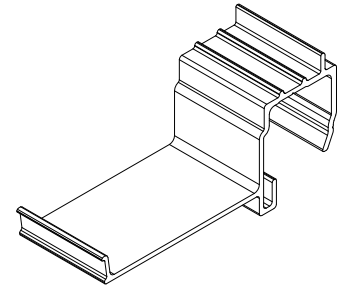
**Exterior Jamb Cover, A2615**



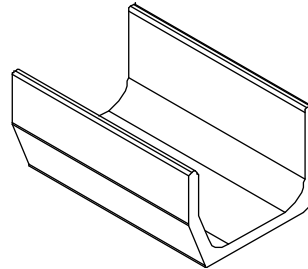
**Mid Exterior Jamb Cover,  
A2460**



**Exterior Cover, A2700**



**Exterior Head Jamb or  
Jamb Cover, A3077**



**Sill Reinforcement, IZ3,  
A2766**

## Sash Performance Bracket

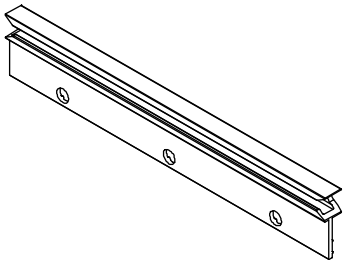
A2805

*Ultimate Double Hung G2*

*Ultimate Double Hung DISC LA PRE 4/24/17*

Color	PN
Black	18866206

Suggested Fasteners	PN
3 – #7x3/4" Flat head screw	02050321



## Sill Reinforcement, IZ3

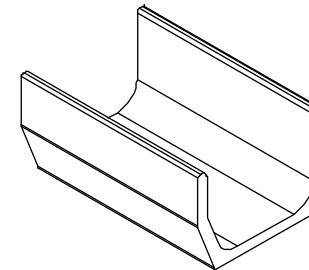
A2766

*Ultimate Double Hung G2*

*Ultimate Double Hung DISC LA PRE 4/24/17*

Length	Color	PN
144" (3658)	White	18865298
	Almond	18865398
	Black	18865498

Suggested Fasteners	Color	PN
2 – #8 x 1" Phillips flat head screw	White	11800558
	Beige	11800559
	Black	11800560



## Upper Jamb Structural Bracket

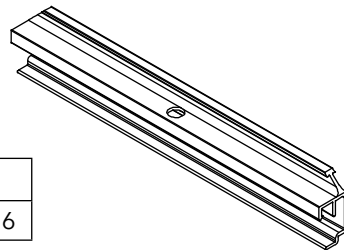
A2771

*Ultimate Double Hung G2*

*Ultimate Double Hung DISC LA PRE 4/24/17*

Length	Color	PN
6" (152)	White	18869006
	Almond	18869106
	Black	18869206

Suggested Fasteners	PN
1 – #8x1/2" Phillips flat head screw	11800516



## Lower Jamb Performance Bracket

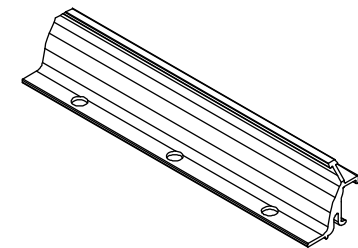
A2791

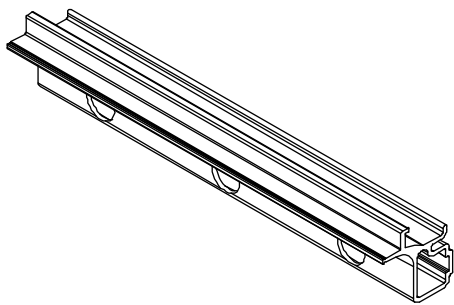
*Ultimate Double Hung G2*

*Ultimate Double Hung DISC LA PRE 4/24/17*

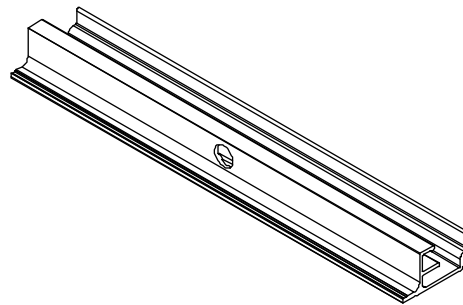
Length	Color	PN
6" (152)	White	18866307
	Almond	18866407
	Black	18866507

Suggested Fasteners
3 – #8x3/4" Phillips truss head screw

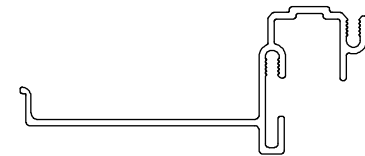




**Lower Jamb Structural Bracket, A2696**  
No longer available, use current part



**Upper Jamb Structural Bracket, A2701**  
No longer available, use current part



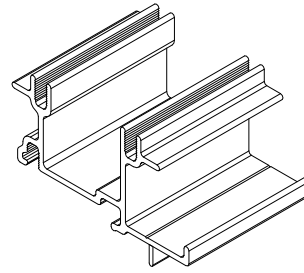
**Exterior Head Jamb or Jamb Cover, A2681**  
Replace with A3077

**To order, specify:**

1. Original order/line number
2. Profile number
3. Length
4. Call number or rough opening
5. Color

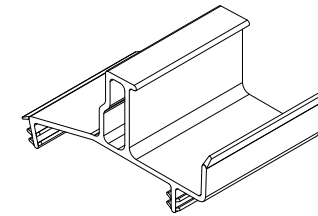
Default Exterior Vinyl Component Colors	
Exterior Clad Color	Component Color
Stone White, Bright Silver	White
Pebble Grey, Bahama Brown, Evergreen, Hampton Sage, Sierra White, Coconut Cream, Cashmere, Wineberry, Cascade Blue	Beige
Bronze, Ebony, Cadet Grey, Copper, Clay, Gunmetal, Liberty Bronze, Suede	Black

Default Interior Vinyl Component Colors	
Factory Interior Finish	Component Color
Prime, Interior Pigmented Top Coat (PIF)	White
Bare: Pine, White Oak, Cherry, Douglas Fir Interior Clear Top Coat: same as Bare Interior Stain: Wheat, Honey	Beige
Bare: Mahogany, Walnut Interior Clear Top Coat: Same as Bare Interior Stain: Hazelnut, Leather, Cabernet, Espresso	Black



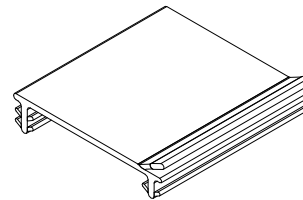
**Mid Exterior Cover Base, V2432**

If the original unit had performance brackets, then a secondary fabrication is needed to accommodate the brackets.

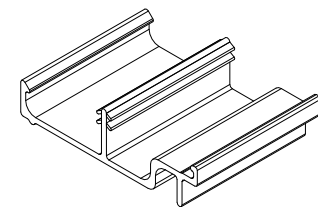


**Sill Thermal Break/Liner, V2191**

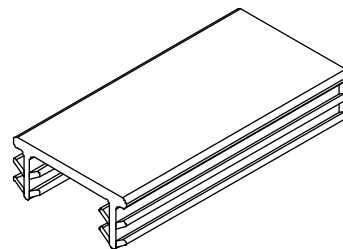
On Custom Color Clad, Sill Thermal Break color will match the exterior weather strip package color selected.



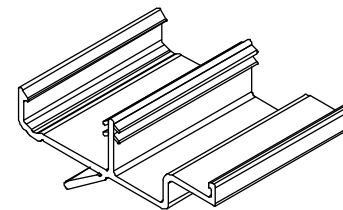
**Bottom Check Rail Exterior Hardware Cover, V2478**



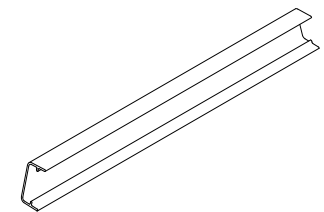
**Exterior Hardware Cover, V2338**



**Sash Connector, V2401 (Round Top)**



**Sash Retainer Cover, V2509 (Round Top)**



**Top Sash Limiter, V2257**

## Sash Retainer Cover (Round Top)

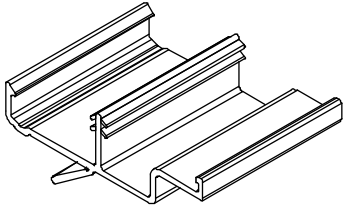
V2509

*Ultimate Double Hung G2*

*Ultimate Double Hung DISC LA PRE 4/24/17*

(Round Top Picture and Transom)

Length	PN
Lineal 120" (3048)	15708199



## Sash Connector (Round Top)

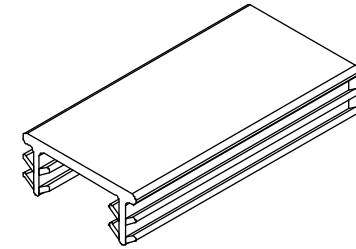
V2401

*Ultimate Double Hung G2*

*Ultimate Double Hung DISC LA PRE 4/24/17*

(Round Top Operator, Picture and Transom)

Length	Color	PN
Lineal 150" (3810)	Black	15368999



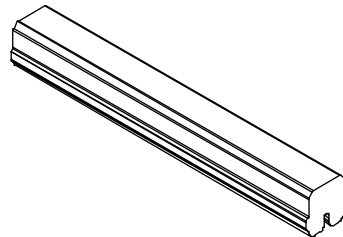
## Interior Sash Stop

V2399

*Ultimate Double Hung G2*

*Ultimate Double Hung DISC LA PRE 4/24/17*

Length	Color	PN
2 1/2" (64)	White	15709400
	Beige	15709402
	Black	15709401



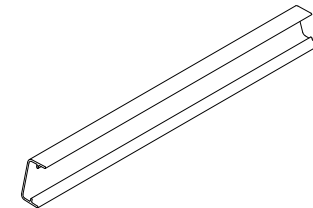
## Exterior Sash Stop

V2257

*Ultimate Double Hung G2*

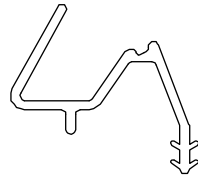
*Ultimate Double Hung DISC LA PRE 4/24/17*

Length	Color	PN
8" (203)	White	15366608
	Beige	15366708
	Black	15366508



**To order, specify:**

1. Original order number
2. Profile number
3. Call number or rough opening
4. Length
5. Clad color

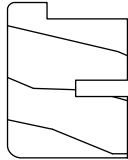


**Sash Retainer, V2386**

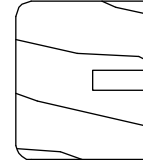
Used prior to 4/24/17

**To order, specify (use all that apply):**

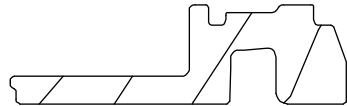
1. Original order/line number
2. Profile number
3. Length
4. Call number or rough opening
5. Finish



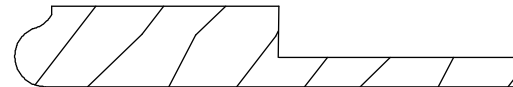
**Head Jamb Radius Stop, W12851  
(Round Top)**



**Head Jamb Radius Stop, W12224  
(Round Top)**



**Interior Jamb Cover, W11581**



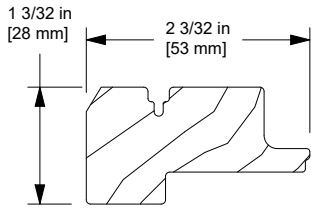
**Stool - Field Applied, W7051**



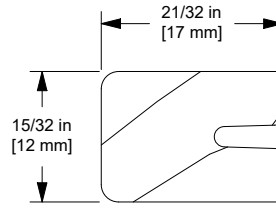
**Sill Liner, W12392**

**To order, specify (use all that apply):**

1. Original order/line number;
2. profile number
3. length;
4. call number or rough opening
5. finish.

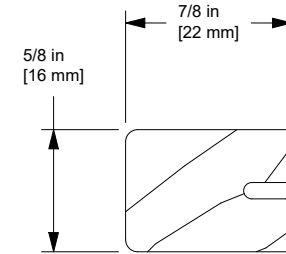


**Interior Cover, Transom,  
W11906**

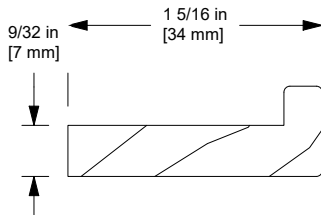


**Head Jamb/Jamb Stop, W12407**

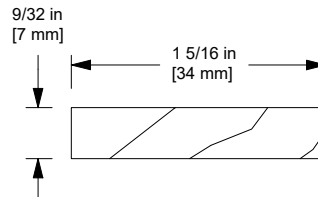
NOTE: Any picture units will require all stops to be replaced.



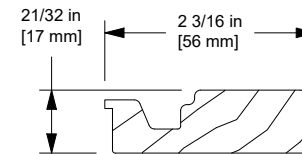
**Parting Stop, W11578**



**Sill Liner,  
Picture/Transom, W11825**



**8 Degree Sill Liner,  
Operator, W11576**



**Sill Filler, W12061**



## Jamb Weather Strip

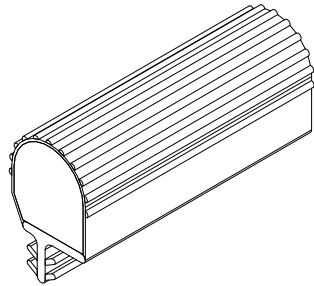
V2682

**Ultimate Double Hung G2**

**Ultimate Double Hung DISC LA PRE 4/24/17**

(Rectangle Operators, Picture, Transom, and Round Top Picture/Transom units)

Length	Color	PN
Lineal 96" (2438)	White	15262896
	Beige	15363096
	Black	15262996



## Head Jamb Weather Strip

V2786

**Ultimate Double Hung G2**

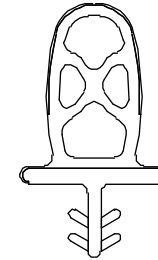
**Ultimate Double Hung DISC LA PRE 4/24/17**

Used on Round Tops - Operator, Picture and Transom units

### Product usage:

For units produced after 4/3/2017, replaces V2419 Head Jamb Weather Strip

Length	Color	PN
Lineal 120" (3048)	White	15711494
	Beige	15711495
	Black	15711496



## Head Jamb Weather Strip

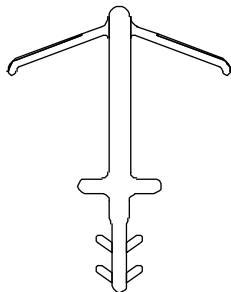
V2783

**Ultimate Double Hung G2**

**Ultimate Double Hung DISC LA PRE 4/24/17**

Replaces V2392 Head Jamb Weather Strip

Length	Color	PN
Lineal 65" (1651)	White	NA
	Beige	NA
	Black	15370665



## Check Rail Weather Strip

V2803

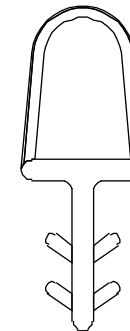
**Ultimate Double Hung G2**

**Ultimate Double Hung DISC LA PRE 4/24/17**

(Rectangle and Round Top Operator)

Replaces V113 Check Rail Weather Strip

Length	Color	PN
Lineal 65" (1651)	White	15816165
	Beige	15816265
	Black	15816365



## Weather Strip

V2779

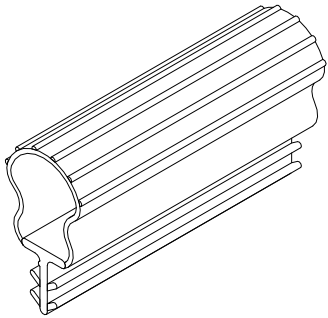
**Ultimate Double Hung G2**

**Ultimate Double Hung DISC LA PRE 4/24/17**

(All Rectangle and Round Top Operator/Stationary units)

Replaces V147 Weather Strip

Color	Length	PN
Black	65" (1651)	15362965
	120" (3048)	15362995

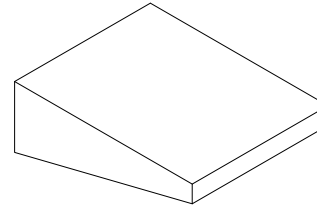


## Transom Sill Filler

**Ultimate Double Hung G2**

**Ultimate Double Hung DISC LA PRE 4/24/17**

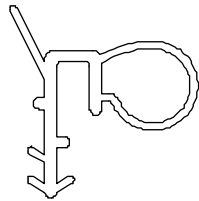
Length	PN
48" (1219)	15350013



## Ultimate Double Hung DISC LA Pre 4/24/17

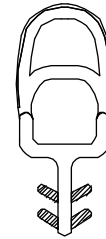
### To order, specify:

1. Original order number
2. Profile number
3. Call number or rough opening
4. Length
5. Clad color



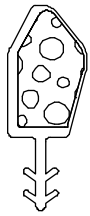
#### **Top Check Rail Weather Strip, V2403**

For use on units produced prior to  
9/29/2014



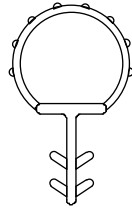
#### **Head Jamb Weather Strip, V2419**

For use on units produced prior to  
4/4/2017



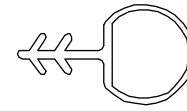
**Header Interior Weather Strip, V2392**

Replace with V2783



**Sill Weather Strip, V147**

Replace with V2779



**Top Check Rail Exterior Weather Strip, V113**

Replace with V2803

# Screen Replacement

Ultimate Double/Single Hung G2

Ultimate Double/Single Hung G1 DISC LA Pre 4/24/17

Standard screen mesh is Marvin Bright View™. Aluminum mesh is available as an option in black, charcoal, bright aluminum or bright bronze. Determine the outside measurement of the existing screen and find the size that corresponds to the width and height indicated on the following charts. Insert units will use the conversions only, as they are all special sizes. Surrounds are available in bronze, stone white, brown, pebble gray and evergreen.

NOTE: The Aluminum Screen will be the standard for units with a frame size height of  $\leq 54 \frac{1}{2}$ ", with an option of the Extruded Aluminum Screen available. The standard screen for any unit with a frame size height  $> 54 \frac{1}{2}$ " will be the Extruded Aluminum Screen.

## To order, specify:

1. Original order number
2. Size; – If there is no existing screen to obtain the OM of the screen, determine the size of the screen by using the conversions and chart. The daylight opening is the measurement of the visible glass.
3. Surround color
4. Mesh type

### Full Screen, Aluminum Screen

#### Daylight Opening of one sash (if equal height) to OM of screen

Daylight Width +  $4 \frac{41}{64}$ " = OM Width of Screen

Daylight Height x 2 +  $8 \frac{1}{4}$ " = OM Height of Screen

### Half Screen, Aluminum Screen

#### Daylight Opening to OM of Half Screen

Daylight Width +  $4 \frac{41}{64}$ " = OM Width of Screen

Daylight Height +  $5 \frac{7}{16}$ " = OM Height of Screen

### Full Screen, Extruded Aluminum Screen

#### Ultimate Double Hung G1 DISC LA PRE 4/24/17

#### Ultimate Double Hung G2

Daylight Opening of one sash (if equal height) to OM of screen.

Daylight Opening Width +  $4 \frac{41}{64}$ " = OM Width of Screen

Daylight Opening Height x 2 +  $8 \frac{1}{4}$ " = OM Height of Screen

### Half Screen, Extruded Aluminum

#### Ultimate Double Hung G1 DISC LA PRE 4/24/17

#### Ultimate Double Hung G2

Daylight Opening to OM of Half Screen

Daylight Width +  $4 \frac{41}{64}$ " = OM Width of Screen

Daylight Height +  $5 \frac{45}{64}$ " = OM Height of Screen

Width	
CN Size	OM Width
16	19 3/8"
20	23 3/8"
24	27 3/8"
26	29 3/8"
28	31 3/8"
30	33 3/8"
32	35 3/8"
36	39 3/8"
40	43 3/8"

Height	
CN Size	OM Width
12	29 3/4"
14	33 3/4"
16	37 3/4"
18	41 3/4"
20	45 3/4"
22	49 3/4"
24	53 3/4"
24/36	65 3/4"
26	58 1/2"
28	61 3/4"
30	65 3/4"
32	69 3/4"
34	73 3/4"
36	77 3/4"
40	85 3/4"

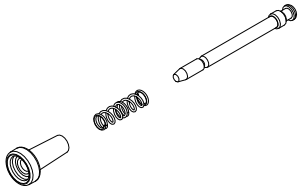
## Screen Plunger Kit

Aluminum Screen

### Includes:

- 1 - Plunger Bolt
- 1 - Plunger Spring
- 1 - Plunger Cap, Black

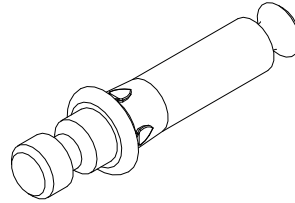
PN
11851053



## Screen Header Pin

Aluminum Screen

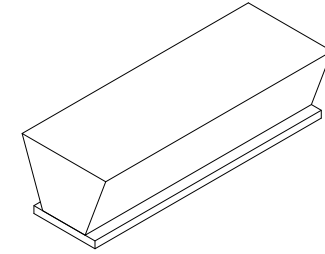
PN
10500876



## Half Screen Check Rail Weather Strip

Aluminum Screen

Length	Color	PN
Specify LF	Gray	15221497



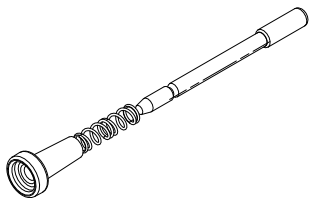
## Plunger and Spring Assembly

Extruded Aluminum Screen

### Includes:

- 1 - Plunger Bolt
- 1 - Plunger Spring
- 1 - Plunger Cap, Black

PN
10500706

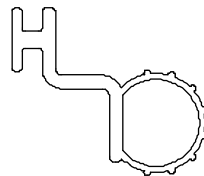


## Half Screen Weather Strip

V2113

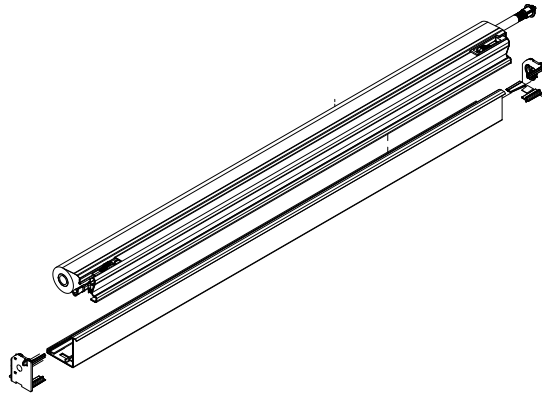
Extruded Aluminum Screen

Length	Color	PN
Specify LF	Beige	15361399



## Order through Configured Parts in OMS

NOTE: Service Only Parts



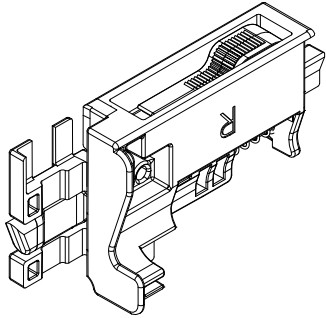
### Screen Cartridge Assembly - Full Assembly

Includes: spring assembly, free spin end cap, ratchet end cap, interior housing, pull bar, pull bar backer, pull bar seal, carrier bolt assemblies, screen mesh, spline tube, 4 interior gaskets, screws, warning label, packaging

## Carrier Bolt Assembly

*Ultimate Double Hung G2*  
*Ultimate Single Hung G2*

Handing	Beige PN	White PN	Black PN
LH	10501387	10501389	10501391
RH	10501386	10501388	10501390



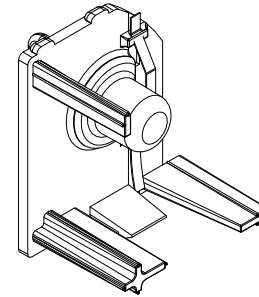
RH shown

## Free Spin End with Leaf Spring

*Ultimate Double Hung G2*  
*Ultimate Single Hung G2*

Service Only

PN
10501700

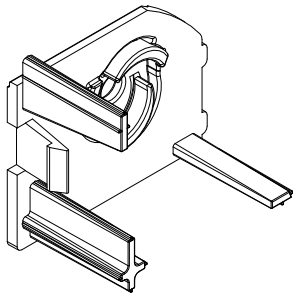


## Ratchet End Cap

*Ultimate Double Hung G2*  
*Ultimate Single Hung G2*

Service Only

PN
10500879

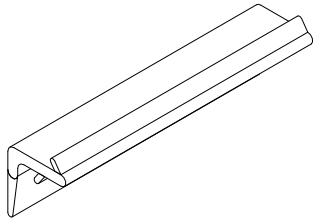




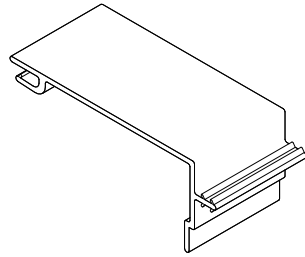
**When ordering replacement parts, specify:**

1. Original order number
2. Type of unit
3. Description

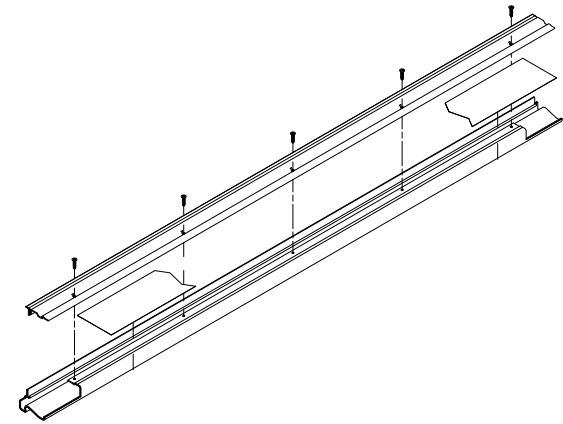
NOTE: Service Only Parts



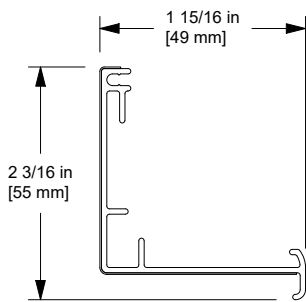
**Pull Bar Fin, V2372**  
(Black or Beige)



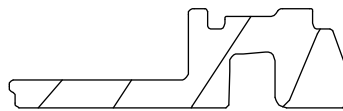
**Exterior Housing, V2366**



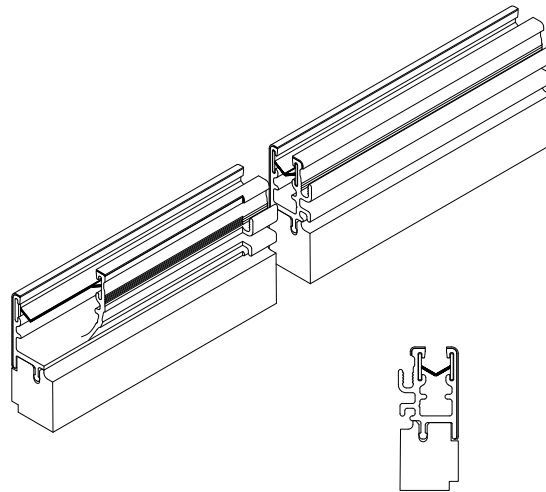
**Pull Bar and Backer with Fin and screws**



**Interior Housing, C0117**



**Interior Jamb Cover, W11581**



**Screen Track Assembly, C0135 and V2627**

NOTE: Wood Jamb Liner not included

For Combinations and Energy Panel Availability and Replacement Parts, see Replacement Parts section:  
“Ultimate and Ultimate Wood Window Combinations and Energy Panels”