

Modern Direct Glaze Corner Window

Measuring Instruction

ABSTRACT: These instructions are intended to aid the ordering process of a Modern Direct Glaze Corner Window. This document will also help an installer frame an opening to the correct dimensions. The Modern Direct Glaze Corner Window is not load-bearing and should not be installed in any manner that places the unit under load from the wall system. Care must be taken with the design of the structure surrounding these units. These instructions cover the following products:

- Modern Direct Glaze Corner Window

IMPORTANT

Constructing a level, plumb, and square opening is extremely important to the successful installation of the Modern Direct Glaze Corner Window.

Handing Terminology

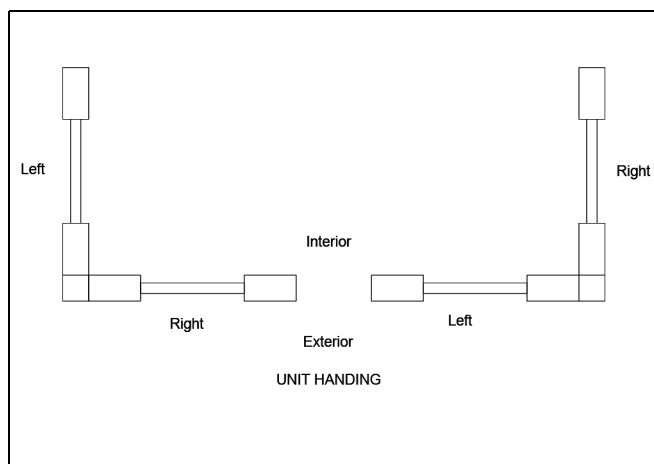


Figure 1

Handing is always determined as seen from the exterior.

Measurements

The Modern Direct Glaze Corner Window may be ordered by rough opening (RO) or frame size (FS).

Rough Opening (RO) is a measurement of the wall opening that provides clearance on three sides of the window for proper installation, insulating, and shimming.

RO Height = Frame OM Height + 3/4".

RO Width = Frame OM Width + 1 1/8" for each side.

- Separate RO width measurements are required for each side of the corner window.
- Include the exterior sheathing in the RO measurement.
- In some instances, this measurement may need to account for rigid insulation if the nailing fin (sealing plane) is to the exterior of the insulation.

Construction Details

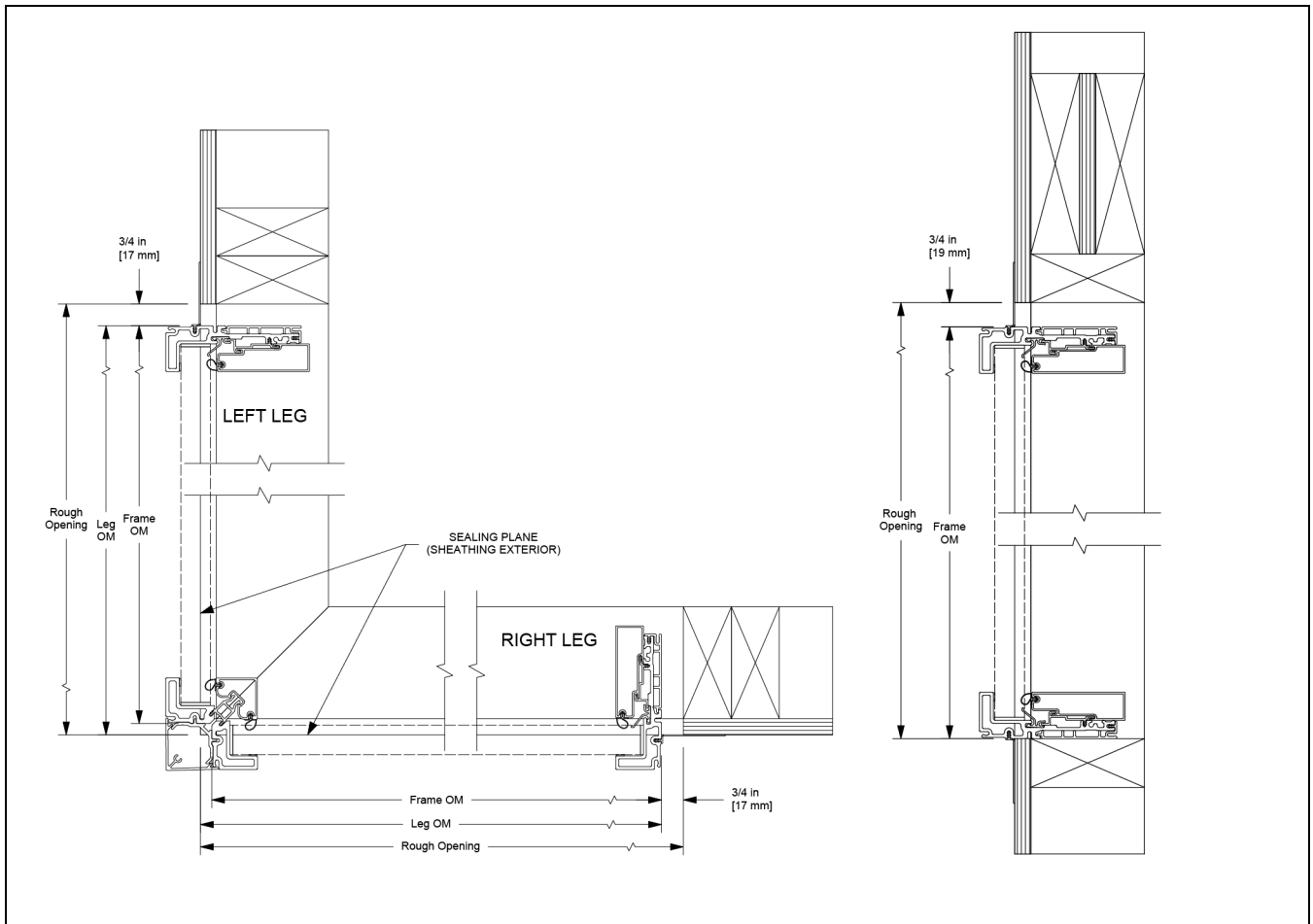


Figure 2

Framing Conversions

Framing RO Width is the measurement of the wall frame only, excluding any exterior sheathing and/or rigid insulation

If Sealing Plane is at the exterior of the Sheathing: Framing RO Width = RO Width – Exterior Sheathing.

Example: 36" RO width – 0.625" exterior sheathing = 35.375" framing RO (before sheathing)

If Sealing Plane is at the exterior of Rigid Insulation: Framing RO Width = RO Width – Exterior Sheathing – Exterior Rigid Insulation.

Example: 36" RO width – 0.625" Exterior Sheathing – 1" Rigid Insulation = 34.375" Framing RO Width (before sheathing/insulation)

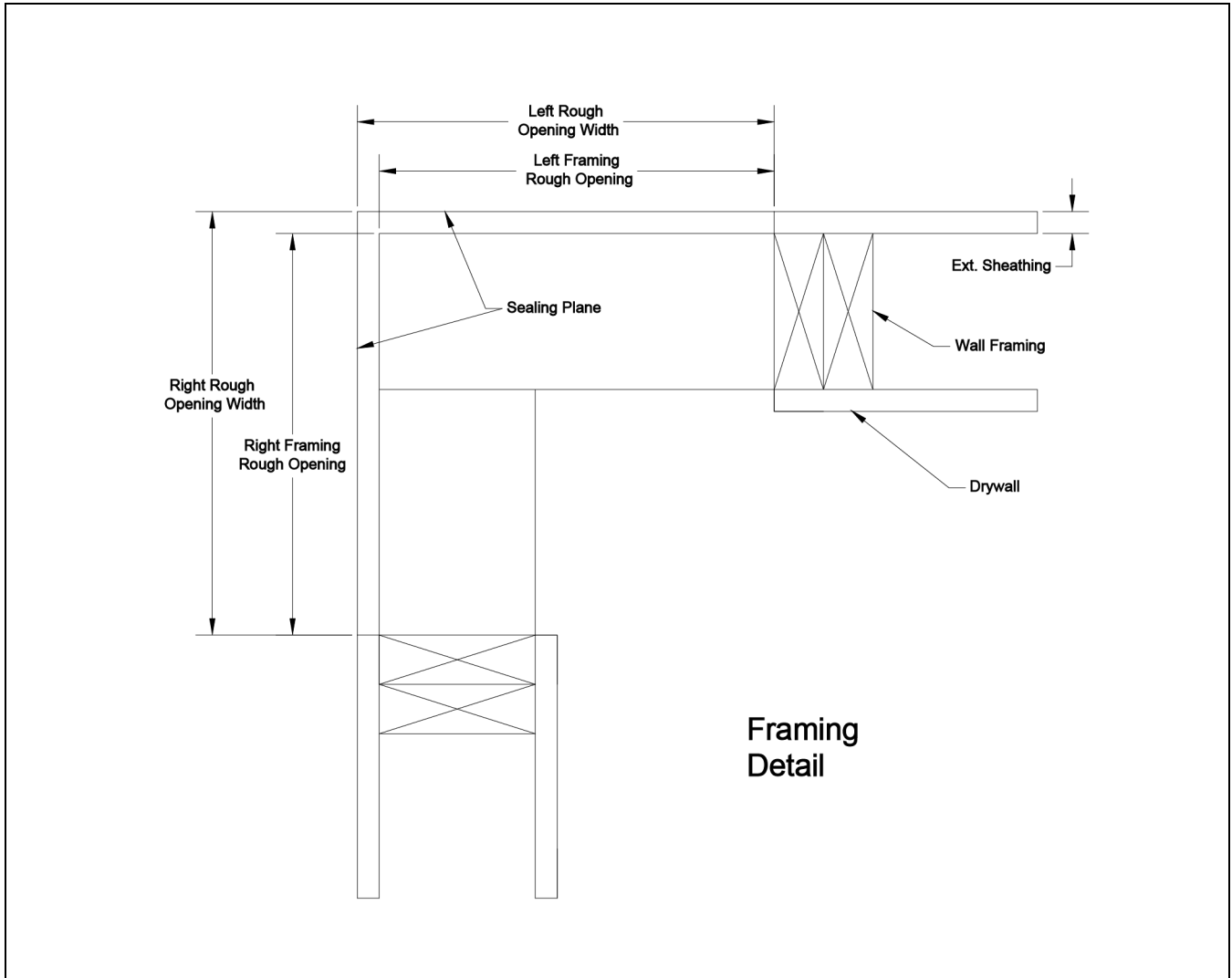


Figure 3

Project Measurements

Use this page as an aid to match and record measurements from our Marvin Order Management system with actual dimensions in the field.

Project	
Measured by:	
Date:	

Required Measurements
RO Height = Frame OM Height + 3/4"
RO Width = Frame OM Width + 1 1/8" for each side

Corner 1:			
Right Frame OM Width		Right RO Width	
Left Frame OM Width		Left RO Width	
Frame OM Height		RO Height	

Corner 2:			
Right Frame OM Width		Right RO Width	
Left Frame OM Width		Left RO Width	
Frame OM Height		RO Height	

Corner 3:			
Right Frame OM Width		Right RO Width	
Left Frame OM Width		Left RO Width	
Frame OM Height		RO Height	

Corner 4:			
Right Frame OM Width		Right RO Width	
Left Frame OM Width		Left RO Width	
Frame OM Height		RO Height	

Corner 5:			
Right Frame OM Width		Right RO Width	
Left Frame OM Width		Left RO Width	
Frame OM Height		RO Height	

Corner 6:			
Right Frame OM Width		Right RO Width	
Left Frame OM Width		Left RO Width	
Frame OM Height		RO Height	