



# Elevate Double Hung

## Replacement Parts

Specifications and technical data are subject to change without notice.

Numbers listed in ( ) parentheses are metric equivalents in millimeters rounded to the nearest whole number.

Suggested fasteners are not included and must be ordered separately.

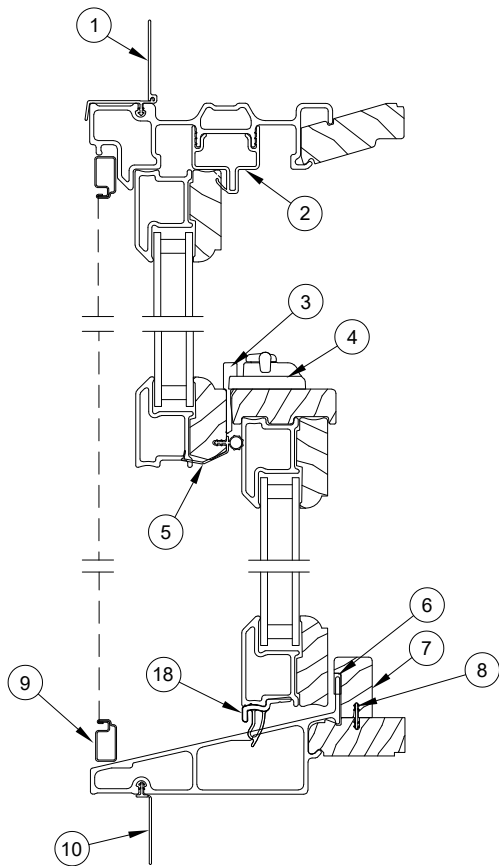
Illustrations are not to scale.

## Contents

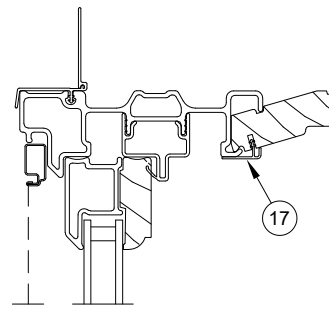
Product History.....	2
Part Identification - Operator .....	4
Part Identification - Picture/Transom.....	5
Installation Parts.....	6
Sash Hardware .....	7
Miscellaneous Parts .....	11
Miscellaneous Parts - Discontinued Limited Availability (LA).....	12
Miscellaneous Parts - Discontinued No Availability (NA).....	13
Balance Tube Replacement .....	14
Top Balance Tubes.....	15
Bottom Balance Tubes.....	19
Jamb/Head Jamb Carrier Assemblies - Configured Part in OMS.....	23
WOCD Field Applied and Replacement Kit .....	24
Vinyl Parts - Configured Part in OMS.....	25
Vinyl Parts.....	26
Wood Parts - Configured Part in OMS .....	30
Wood Parts.....	31
Wood Parts - Discontinued Limited Availability (LA).....	33
Weather Strip - Configured Part in OMS.....	34
Weather Strip - Discontinued Limited Availability (LA) .....	37
Weather Strip - Discontinued No Availability (NA) .....	38
Weather Strip: Blocks/Seals/Plugs .....	40
Weather Strip: Blocks/Seals/Plugs - Discontinued (LA) .....	42
Weather Strip: Blocks/Seals/Plugs - Discontinued (NA) .....	43
Screen Replacement - Configured Part in OMS.....	44
Screen Parts .....	45
Screen Parts - Discontinued Limited Availability (LA) .....	46
Screen Parts - Discontinued No Availability (NA).....	47
Sash Replacement - Configured Part in OMS .....	48

Produced	Unit Type	Features and Changes
2006	Double Hung	01/2006: Redesigned product introduction featuring DP40 on all sizes and DP50 w/HP kit on all sizes, more wood to the interior, new hardware and additional larger operating and picture units. 07/2006: SDL offered on all Elevate Series windows and doors. 7/8" wide bars with Ultrex exterior and wood interior. See Product Bulletin 66 for more details. 09/2006: Prairie SDL and GBG Lite cuts made available for the Elevate Series windows and doors. See Product Bulletin 70 for more details.
2007	Double Hung	03/2007: Bronze exteriors introduced. 11/2007: Evergreen exteriors introduced.
2008	Double Hung	03/17/2008: Cashmere exteriors introduced. 06/2008: IZ3 products introduced. 10/2008: CN68 equal sash introduced. Introduced Brass, Satin Nickel and Oil Rubbed Bronze hardware finishes for windows.
2009	Double Hung	05/2009: LoE3 366™ glass option introduced.
2010	Double Hung	01/2010: Introduced the new grille tack and installation tool and added to accessory chapter. 02/2010: Bottom Rail Weather-strip changed from V1561 and V1463 to V1930, Sill cover changed from W8793 to W10682. 04/26/2010: CN32 introduced. Tempered Obscure glass option introduced.
2011	Double Hung	04/2011: Added CN44 and LoE 180™ glass option introduced. 09/2011: V2132, sash stop, replaces V1582. 12/19/2011: Introduced special sizes and through jamb installation option.
2012	Double Hung	04/2012: Introduced STC ratings on select Elevate products. 06/2012: Simulated check rail bar option introduced. 08/06/2012: Balance Tube and Sash Stop changes made to select IZ3 units. 08/27/2012: Introduced Ebony exterior and exterior casing options. 10/29/2012: Introduced Expanded Sizes and Mulls.
2013	Double Hung	02/25/2013: Leaf spring replaced the stationary screen pin. 12/16/2013: Introduced special sizes on IZ3 products. Check Rail cover W8783 changed to W11916.
2014	Double Hung	18/25/2014: Discontinued use of the jamb adjustment insert.
2015	Double Hung	04/27/2015: Introduced expanded sizes, new bottom rail extension with weather strip (V2527) and Factory Applied HP kit. 08/31/2015: Half Screens introduced.
2016	Double Hung	08/29/2016: Replaced bottom rail extension and weather strip.
2017	Double Hung	12/18/2017: Added the availability of customer specified lite cut configurations for SDL with and with out spacer bar and GBG. To include simulated check rail and any color GBG to the exterior only of standard and special sizes.
2018	Double Hung	10/29/2018: Introduced Designer Black and Clear interior finishes and Matte Black hardware option. All Balance tubes were changed to Mill Finish for Top and Bottom sash. Low E3 ERS glass type was added. 12/17/2018: Introduced textured glass types: Reed, Narrow Reed, Rain, Glue Chip and Frost and also colored glass types: Clear, Bronze, Gray and Green.
2019	Double Hung	12/16/2019: Discontinued sale of Wood Removable Grilles for Elevate products.
2020	Double Hung	04/27/2020: Added WOCD field applied and replacement kits (see Product Bulletin 758). 11/16/2020: V2510 frame weather strip was replaced with V3179. A header part stop gasket was added along with a check rail dust block to be used in conjunction with the V3179. See Customer Service Bulletin #177 for more information.
2021	Double Hung	05/17/2021: Incorporated new header end plugs and check rail weather strip, V3203 (Discontinued V1372). 10/25/2021: Changed screen retention plunger, see Product Bulletin 799 for more information. Standard screen mesh changed to Marvin Bright View™, see Product Bulletin 793 for more information. Bottom sash weather strip and jamb carrier assemblies became available as Configured Parts in OMS, see Product Bulletin 797 for more information.

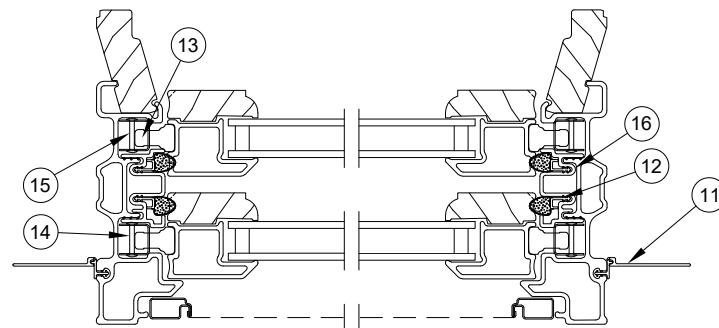
Produced	Unit Type	Features and Changes
2022	Double Hung	<p>04/21/2022: Part numbers were removed for Jamb Carriers (V1327/V3179) and (V1327/V1474) and Sash Bottom Rail Extension (V2527). Configured parts are available in OMS. Any Discontinued - Limited Availability (LA) will continue to be available by part number. See Product Bulletin 829 for more information.</p> <p>08/29/2022: Introduced CN80 and CN84 heights. See Product Bulletin 843 for more information.</p> <p>10/31/2022: V2955 and W8936 were added as Configured Parts in OMS. Part numbers for these profiles were removed. See Product Bulletin 852 and 791 for more information. Evergreen exterior discontinued. See Product Bulletin 851 for more information.</p>
2023	Double Hung	<p>02/27/2023: Gunmetal introduced. See Product Bulletin 863 for more information.</p> <p>05/01/2023: V03291 weather strip added for field service use only. See Product Bulletin 885 for more information.</p>



Head Jamb and Sill

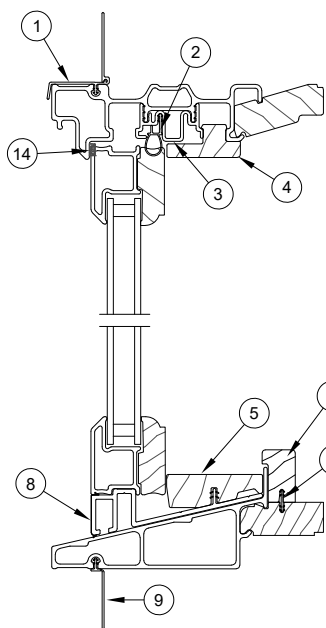


Head Jamb  
Interior Painted  
Units Only

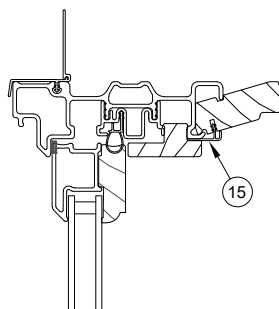


Jamb

1. Head Jamb Nailing Fin, V119
2. Head Jamb Parting Stop, V1328
3. Sash Keeper
4. Sash Lock
5. Top Check Rail Weather Strip, V3203
6. Adhesive Tape (included with Sill Cover)
7. Sill Cover, W10682
8. Connecting Barb (included with Sill Cover)
9. Screen
10. Sill Nailing Fin, V084
11. Jamb Nailing Fin, V104
12. Frame Weather Strip, V3179
13. Sash Pivot Pin
14. Top Sash Balance Tube
15. Bottom Sash Balance Tube
16. Jamb Carrier Assembly
17. Interior Cap, Jamb/Head Jamb, V2955
18. Bottom Rail Extension with Weather Strip, V2527

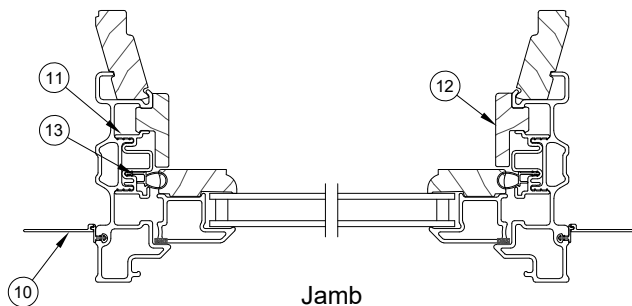


Head Jamb and Sill

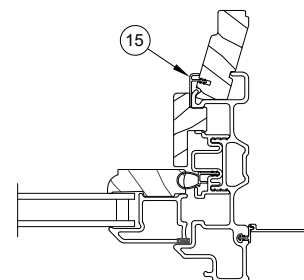


Head Jamb  
Interior Painted  
Units Only

1. Head Jamb Nail Fin/Drip Cap, V119
2. Frame Weather Strip, V1474
3. Head Jamb Carrier Assembly, V1327
4. Interior Wood Stop, Head Jamb, W8936
5. Interior Sill Stop, W8794
6. Sill Cover, W10682
7. Connecting Barb (included with Sill Cover)
8. Sill Filler, V1349
9. Sill Nailing Fin, V084
10. Jamb Nailing Fin, V104
11. Jamb Carrier Assembly
12. Interior Wood Stop, Jamb, W8936
13. Frame Weather Strip, V1474
14. Stationary Frame Tape
15. Interior Cap, Jamb/Head Jamb, V2955



Jamb



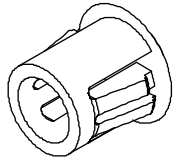
Jamb  
Interior Painted  
Units Only

## Through Jamb Plug

### Usage dates:

January 2006 to present

Color	PN
Beige	11882969
Black	11882971
Stone White	11882970



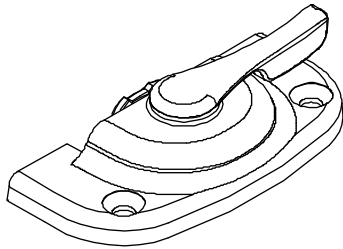
## Cam Lock

### Usage dates:

January 2006 to present

Color	PN
Almond Frost	10150055
White	10150053
Oil Rubbed Bronze	10150095
Satin Nickel	10150093
Brass	10150091
Matte Black	10150097

Suggested Fasteners	
2 - #6x1 1/2" Phillips flat head screws	
Color	PN
Almond Frost	11800341
White	11800340
Oil Rubbed Bronze	11800344
Satin Nickel	11800343
Brass	11800342
Matte Black	11800348



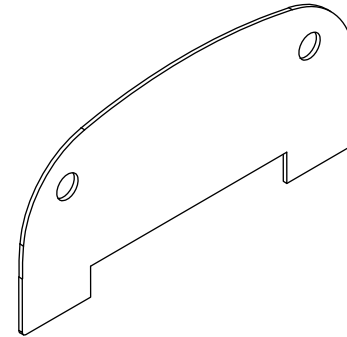
## Lock Spacer

NOTE: FOR FIELD SERVICE ONLY

### Usage dates:

January 2006 to present

Color	PN
White	10506252
Black	10506352



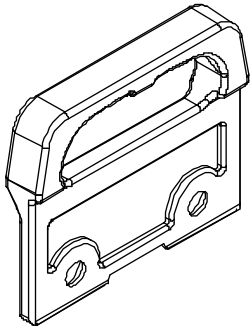
## Keeper

### Usage dates:

January 2006 to present

Color	PN
Almond Frost	10840046
White	10840045
Oil Rubbed Bronze	10840049
Satin Nickel	10840048
Brass	10840047
Matte Black	10840050

Suggested Fasteners	
2 - #6x1 1/2" Phillips flat head screws	
Color	PN
Almond Frost	11800341
White	11800340
Oil Rubbed Bronze	11800344
Satin Nickel	11800343
Brass	11800342
Matte Black	11800348



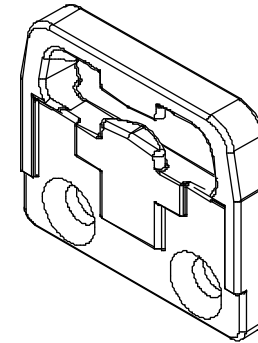
## Keeper, IZ3

### Usage dates:

June 2008 to present

Color	PN
Almond Frost	11869782
White	11869781
Oil Rubbed Bronze	11869785
Satin Nickel	11869784
Brass	11869783
Matte Black	11869780

Suggested Fasteners	
2 - #10X 1 1/2" Phillips flat head screws	
Color	PN
Almond Frost	11806141
White	11806142
Oil Rubbed Bronze	11806145
Satin Nickel	11806144
Brass	11806143
Matte Black	11806138





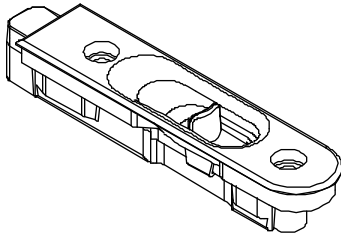
## Bottom Tilt Latch

### Usage dates:

January 2006 to present

Color	PN
Almond Frost	11869707
White	11869705
Oil Rubbed Bronze	11869753
Satin Nickel	11869752
Brass	11869751
Black	11869709

Suggested Fasteners	
2 - #7x1 1/4" Phillips pan head screws	
Color	PN
Almond Frost	11807161
White	11807160
Oil Rubbed Bronze	11807165
Satin Nickel	11807164
Brass	11807163
Black	11807169



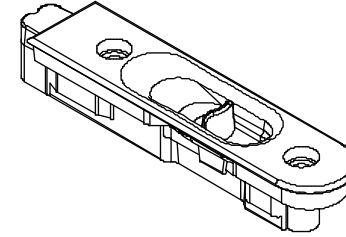
## Bottom Tilt Latch, IZ3

### Usage dates:

June 2008 to present

Color	PN
Almond Frost	11869788
White	11869787
Oil Rubbed Bronze	11869756
Satin Nickel	11869755
Brass	11869754
Black	11869757

Suggested Fasteners	
2 - #7x1 1/4" Phillips pan head screws	
Color	PN
Almond Frost	11807161
White	11807160
Oil Rubbed Bronze	11807165
Satin Nickel	11807164
Brass	11807163
Black	11807169



## Top Tilt Latch

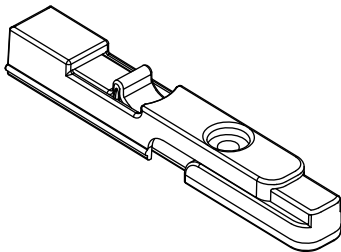
### Includes:

1 - #7-19 x 1 1/4" Phillips pan head, full thread screw

### Usage dates:

January 2006 to present

Color	PN
Beige	11869708



## Pivot Pin, Top Sash

### Usage dates:

10-25-2021 to present

<b>PN</b>
10815444

<b>Suggested Fasteners</b>
1 - #7-16 x 7/8" Phillips flat head screw
<b>PN</b>
11800798



## Pivot Pin, Bottom Sash

### Usage dates:

10-25-2021 to present

<b>PN</b>
10815255

<b>Suggested Fasteners</b>
1 - #7-16 x 7/8" Phillips flat head screw
<b>PN</b>
11800798

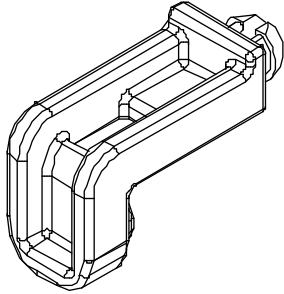


## Balance Tube Plug

### Usage dates:

January 2006 to present

PN
10500174

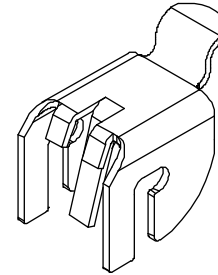


## Rotating Hanger Clip

### Usage dates:

January 2006 to present

PN
106610

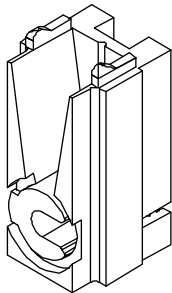


## Balance Tube Clutch

### Usage dates:

January 2006 to present

Color	PN
Gray	105530

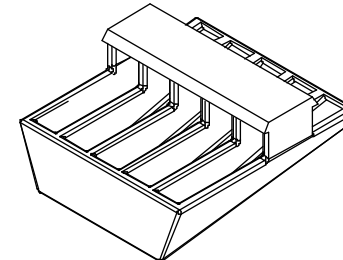


## Sill Block, IZ3

### Usage dates:

June 2008 to present

Color	PN
Beige	11867891
Black	11867993
White	11867992



## Bottom Sash Stop

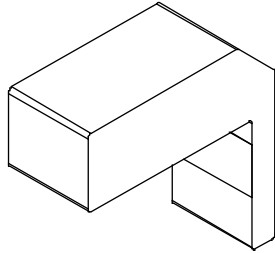
FIELD SERVICE ONLY

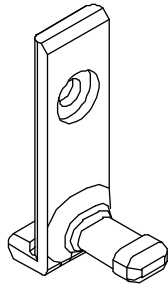
NOTE: Adhesive transfer tape applied.

### Usage dates:

4/22/2010 to 4/29/2013

PN
10506254

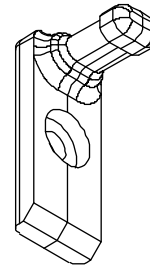




**Pivot Pin, Top Sash**

No Availability, replace with current

Usage dates: January 2006 to October 25, 2021



**Pivot Pin, Bottom Sash**

No Availability, replace with current

Usage dates: January 2006 to October 25, 2021

## Balance Tube Replacement

### To order, provide as needed:

1. Provide the original order number when possible;
2. Specify top or bottom sash;
3. Balance type and balance ID code (printed on balance tube as shown in illustration below);
4. Weight of sash;
5. Specify quantity. Do NOT specify as pairs or sets. If 1 tube is needed, order 1. If 4 balances are needed, order 4.

NOTE: As of October 29, 2018, all balance tubes will be mill finish. This change may result in mixed tube colors. If desired a second balance tube can be ordered to maintain a consistent appearance.

### Usage dates:

January 2006 to present



Top Balance Tubes		
Part Number	Balance ID Code	Length (in)
10665028	226-28	12
10665128	304-28	12
10665228	368-28	12
10665328	42-28	12
10778128	8128	12
10778228	8228	12
10778328	8328	12
10778428	8428	12
10778528	8528	12

Top Balance Tubes		
Part Number	Balance ID Code	Length (in)
10665030	226-30	13
10665130	304-30	13
10665230	368-30	13
10665330	42-30	13
10778130	8130	13
10778230	8230	13
10778330	8330	13
10778430	8430	13
10778530	8530	13

Top Balance Tubes		
Part Number	Balance ID Code	Length (in)
10665032	226-32	14
10665132	304-32	14
10665232	368-32	14
10665332	42-32	14
10778132	8132	14
10778232	8232	14
10778332	8332	14
10778432	8432	14
10778532	8532	14

Top Balance Tubes		
Part Number	Balance ID Code	Length (in)
10665034	226-34	15
10665134	304-34	15
10665234	368-34	15
10665334	42-34	15
10778134	8134	15
10778234	8234	15
10778334	8334	15
10778434	8434	15
10778534	8534	15

Top Balance Tubes		
Part Number	Balance ID Code	Length (in)
10665036	226-36	16
10665136	304-36	16
10665236	368-36	16
10665336	42-36	16
10778136	8136	16
10778236	8236	16
10778436	8436	16
10778536	8536	16

Top Balance Tubes		
Part Number	Balance ID Code	Length (in)
10665038	226-38	17
10665138	304-38	17
10665238	368-38	17
10665338	42-38	17
10778138	8138	17
10778238	8238	17
10778338	8338	17
10778438	8438	17
10778538	8538	17

Top Balance Tubes		
Part Number	Balance ID Code	Length (in)
10665040	226-40	18
10665140	304-40	18
10665240	368-40	18
10665340	42-40	18
10778140	8140	18
10778240	8240	18
10778340	8340	18
10778440	8440	18
10778540	8540	18

Top Balance Tubes		
Part Number	Balance ID Code	Length (in)
10665042	226-42	19
10665142	304-42	19
10665242	368-42	19
10665342	42-42	19
10778142	8142	19
10778242	8242	19
10778342	8342	19
10778442	8442	19
10778542	8542	19

Top Balance Tubes		
Part Number	Balance ID Code	Length (in)
10665044	226-44	20
10665144	304-44	20
10665244	368-44	20
10665344	42-44	20
10778144	8144	20
10778244	8244	20
10778344	8344	20
10778444	8444	20
10778544	8544	20

Top Balance Tubes		
Part Number	Balance ID Code	Length (in)
10665046	226-46	21
10665146	304-46	21
10665246	368-46	21
10665346	42-46	21
10778146	8146	21
10778246	8246	21
10778346	8346	21
10778446	8446	21
10778546	8546	21

Top Balance Tubes		
Part Number	Balance ID Code	Length (in)
10665048	226-48	22
10665148	304-48	22
10665248	368-48	22
10665348	42-48	22
10778148	8148	22
10778248	8248	22
10778348	8348	22
10778448	8448	22
10778548	8548	22

Top Balance Tubes		
Part Number	Balance ID Code	Length (in)
10665050	226-50	23
10665150	304-50	23
10665250	368-50	23
10665350	42-50	23
10778150	8150	23
10778250	8250	23
10778350	8350	23
10778450	8450	23

Top Balance Tubes		
Part Number	Balance ID Code	Length (in)
10665052	226-52	24
10665152	304-52	24
10665252	368-52	24
10665352	42-52	24
10778152	8152	24
10778252	8252	24
10778352	8352	24
10778452	8452	24
10778552	8552	24

Top Balance Tubes		
Part Number	Balance ID Code	Length (in)
10665054	226-54	25
10665154	304-54	25
10665254	368-54	25
10665354	42-54	25
10778154	8154	25
10778254	8254	25
10778354	8354	25
10778454	8454	25
10778554	8554	25

Top Balance Tubes		
Part Number	Balance ID Code	Length (in)
10665056	226-56C68	26
10665156	304-56C68	26
10665256	368-56C68	26
10778156	8156	26
10778256	8256	26
10778356	8356	26
10778456	8456	26
10778556	8556	26

Top Balance Tubes		
Part Number	Balance ID Code	Length (in)
10665058	226-58	27
10665158	304-58	27
10665258	368-58	27
10665358	42-58	27
10778158	8158	27
10778258	8258	27
10778358	8358	27
10778458	8458	27
10778558	8558	27



Top Balance Tubes		
Part Number	Balance ID Code	Length (in)
10665060	226-60	28
10665160	304-60	28
10665260	368-60	28
10665360	42-60	28
10778160	8160	28
10778260	8260	28
10778360	8360	28
10778460	8460	28
10778560	8560	28

Top Balance Tubes		
Part Number	Balance ID Code	Length (in)
10665062	226-62	29
10665162	304-62	29
10665262	368-62	29
10665362	42-62	29
10778162	8162	29
10778262	8262	29
10778362	8362	29
10778562	8562	29

Top Balance Tubes		
Part Number	Balance ID Code	Length (in)
10665064	226-64	30
10665164	304-64	30
10665264	368-64	30
10665364	42-64	30
10778164	8164	30
10778264	8264	30
10778364	8364	30
10778464	8464	30
10778564	8564	30

Top Balance Tubes		
Part Number	Balance ID Code	Length (in)
10665066	226-66	31
10665166	304-66	31
10665266	368-66	31
10665366	42-66	31
10778166	8166	31
10778266	8266	31
10778366	8366	31
10778466	8466	31
10778566	8566	31

Top Balance Tubes		
Part Number	Balance ID Code	Length (in)
10665068	226-68	32
10665168	304-68	32
10665268	368-68	32
10665368	42-68	32
10778169	8169	32
10778269	8269	32
10778369	8369	32
10778469	8469	32
10778569	8569	32

Top Balance Tubes		
Part Number	Balance ID Code	Length (in)
10665070	226-70	33
10665170	304-70	33
10665270	368-70	33
10665370	42-70	33
10778170	8170	33
10778270	8270	33
10778370	8370	33
10778470	8470	33
10778570	8570	33

Top Balance Tubes		
Part Number	Balance ID Code	Length (in)
10665072	226-72	34
10665172	304-72	34
10665272	368-72	34
10665372	42-72	34
10778172	8172	34
10778272	8272	34
10778372	8372	34
10778472	8472	34
10778572	8572	34

Top Balance Tubes		
Part Number	Balance ID Code	Length (in)
10665074	226-74	35
10665174	304-74	35
10665274	368-74	35
10665374	42-74	35
10778174	8174	35
10778274	8274	35
10778374	8374	35
10778474	8474	35
10778574	8574	35

Top Balance Tubes		
Part Number	Balance ID Code	Length (in)
10665076	226-76	36
10665176	304-76	36
10665276	368-76	36
10665376	42-76	36
10778176	8176	36
10778276	8276	36
10778376	8376	36
10778476	8476	36
10778576	8576	36

Top Balance Tubes		
Part Number	Balance ID Code	Length (in)
10665078	226-78	37
10665178	304-78	37
10665278	368-78	37
10665378	42-78	37
10778178	8178	37
10778278	8278	37
10778378	8378	37
10778478	8478	37
10778578	8578	37

Top Balance Tubes		
Part Number	Balance ID Code	Length (in)
10665080	226-80	38
10665180	304-80	38
10665280	368-80	38
10665380	42-80	38
10778180	8180	38
10778280	8280	38
10778380	8380	38
10778480	8480	38

Top Balance Tubes		
Part Number	Balance ID Code	Length (in)
10665082	226-82	39
10665182	304-82	39
10665282	368-82	39
10665382	42-82	39
10778182	8182	39
10778282	8282	39
10778382	8382	39
10778482	8482	39
10778582	8582	39

Top Balance Tubes		
Part Number	Balance ID Code	Length (in)
10665084	226-84	40
10665184	304-84	40
10665284	368-84	40
10665384	42-84	40
10778184	8184	40
10778284	8284	40
10778384	8384	40
10778484	8484	40

Bottom Balance Tubes		
Part Number	Balance ID Code	Length (in)
10777028	226-28	12.875
10777128	304-28	12.875
10777228	368-28	12.875
10779328	9328	12.875
10777328	42-28	12.875
10779128	9128	12.875
10779428	9428	12.875

Bottom Balance Tubes		
Part Number	Balance ID Code	Length (in)
10777030	226-30	13.875
10777130	304-30	13.875
10777230	368-30	13.875
10777330	42-30	13.875
10779130	9130	13.875
10779230	9230	13.875

Bottom Balance Tubes		
Part Number	Balance ID Code	Length (in)
10777032	226-32	14.875
10777132	304-32	14.875
10777232	368-32	14.875
10777332	42-32	14.875

Bottom Balance Tubes		
Part Number	Balance ID Code	Length (in)
10777034	226-34	15.875
10777134	304-34	15.875
10777234	368-34	15.875
10777334	42-34	15.875
10779234	9234	15.875

Bottom Balance Tubes		
Part Number	Balance ID Code	Length (in)
10777036	226-36	16.875
10777136	304-36	16.875
10777236	368-36	16.875
10777336	42-36	16.875
10779236	9236	16.875
10779136	9136	16.875
10779336	9336	16.875
10779436	9436	16.875

Bottom Balance Tubes		
Part Number	Balance ID Code	Length (in)
10777038	226-38	17.875
10777138	304-38	17.875
10777238	368-38	17.875
10777338	42-38	17.875
10779338	9338	17.875
10779238	9238	17.875

Bottom Balance Tubes		
Part Number	Balance ID Code	Length (in)
10777040	226-40	18.875
10777140	304-40	18.875
10777240	368-40	18.875
10777340	42-40	18.875
10779340	9340	18.875
10779440	9440	18.875

Bottom Balance Tubes		
Part Number	Balance ID Code	Length (in)
10777042	226-42	19.875
10777142	304-42	19.875
10777242	368-42	19.875
10777342	42-42	19.875
10779142	9142	19.875
10779442	9442	19.875
10779242	9242	19.875

Bottom Balance Tubes		
Part Number	Balance ID Code	Length (in)
10777044	226-44	20.875
10777144	304-44	20.875
10777244	368-44	20.875
10777344	42-44	20.875
10779144	9144	20.875
10779244	9244	20.875
10779444	9444	20.875
10779344	9344	20.875

Bottom Balance Tubes		
Part Number	Balance ID Code	Length (in)
10777046	226-46	21.875
10777146	304-46	21.875
10777246	368-46	21.875
10779146	9146	21.875
10777346	42-46	21.875
10779346	9346	21.875
10779446	9446	21.875
10779246	9246	21.875

Bottom Balance Tubes		
Part Number	Balance ID Code	Length (in)
10777048	226-48	22.875
10777148	304-48	22.875
10777248	368-48	22.875
10779248	9248	22.875
10779148	9148	22.875
10779348	9348	22.875
10779448	9448	22.875

Bottom Balance Tubes		
Part Number	Balance ID Code	Length (in)
10777050	226-50	23.875
10777150	304-50	23.875
10777250	368-50	23.875
10777350	42-50	23.875
10779350	9350	23.875
10779150	9150	23.875
10779250	9250	23.875

Bottom Balance Tubes		
Part Number	Balance ID Code	Length (in)
10777052	226-52	24.875
10777152	304-52	24.875
10777252	368-52	24.875
10777352	42-52	24.875
10779252	9252	24.875
10779352	9352	24.875

Bottom Balance Tubes		
Part Number	Balance ID Code	Length (in)
10777054	226-54	25.875
10777154	304-54	25.875
10777254	368-54	25.875
10777354	42-54	25.875
10779154	9154	25.875
10779254	9254	25.875

Bottom Balance Tubes		
Part Number	Balance ID Code	Length (in)
10777056	226-56	26.875
10777156	304-56	26.875
10777256	368-56	26.545
10779155	9155	26.545
10777356	42-56	26.545
10779255	9255	26.545
10777255	368-55	26.875
10777355	42-55	26.875
10779256	9256	26.875
10779456	9456	26.875
10779356	9356	26.875
10779556	9556	26.875

Bottom Balance Tubes		
Part Number	Balance ID Code	Length (in)
10777058	226-58	27.875
10777158	304-58	27.875
10777258	368-58	27.875
10777358	42-58	27.875
10779358	9358	27.875
10779158	9158	27.875
10779458	9458	27.875
10779258	9258	27.875
10779558	9558	27.875

Bottom Balance Tubes		
Part Number	Balance ID Code	Length (in)
10777060	226-60	28.875
10777160	304-60	28.875
10777260	368-60	28.875
10777261	368-61	28.545
10777360	42-60	28.875
10777359	42-59	28.545
10779160	9160	28.875
10779159	9159	28.545
10779260	9260	28.875
10779460	9460	28.875

Bottom Balance Tubes		
Part Number	Balance ID Code	Length (in)
10777062	226-62	29.875
10777162	304-62	29.875
10777262	368-62	29.875
10777362	42-62	29.875
10779162	9162	29.875
10779562	9562	29.875
10779262	9262	29.875

Bottom Balance Tubes		
Part Number	Balance ID Code	Length (in)
10777064	226-64	30.875
10777164	304-64	30.875
10777264	368-64	30.875
10777364	42-64	30.875
10779364	9364	30.875

Bottom Balance Tubes		
Part Number	Balance ID Code	Length (in)
10777066	226-66	31.875
10777166	304-66	31.875
10777266	368-66	31.875
10777366	42-66	31.875
10779166	9166	31.875
10779366	9366	31.875
10779266	9266	31.875
10779566	9566	31.875

Bottom Balance Tubes		
Part Number	Balance ID Code	Length (in)
10777068	226-68	32.875
10777168	304-68	32.875
10777268	368-68	32.875
10777368	42-68	32.875
10779269	9269	32.875
10779469	9469	32.875
10779569	9569	32.875

Bottom Balance Tubes		
Part Number	Balance ID Code	Length (in)
10777070	226-70	33.875
10777170	304-70	33.875
10777270	368-70	33.875
10777370	42-70	33.875
10779170	9170	33.875
10779370	9370	33.875
10779270	9270	33.875
10779470	9470	33.875

Bottom Balance Tubes		
Part Number	Balance ID Code	Length (in)
10777072	226-72	34.875
10777172	304-72	34.875
10777272	368-72	34.875
10777372	42-72	34.875
10779372	9372	34.875
10779472	9472	34.875

Bottom Balance Tubes		
Part Number	Balance ID Code	Length (in)
10777074	226-74	35.875
10777174	304-74	35.875
10777274	368-74	35.875
10777374	42-74	35.875
10779174	9174	35.875
10779374	9374	35.875
10779474	9474	35.875
10779274	9274	35.875

Bottom Balance Tubes		
Part Number	Balance ID Code	Length (in)
10777076	226-76C68	36.875
10777176	304-76C68	36.875
10777276	368-76C68	36.875
10777376	42-76C68	36.875
10779276	9276	36.875
10779376	9376	36.875
10779476	9476	36.875

Bottom Balance Tubes		
Part Number	Balance ID Code	Length (in)
10777078	226-78	37.875
10777178	304-78	37.875
10777278	368-78	37.875
10777378	42-78	37.875
10779178	9178	37.875
10779278	9278	37.875
10779378	9378	37.875
10779478	9478	37.875

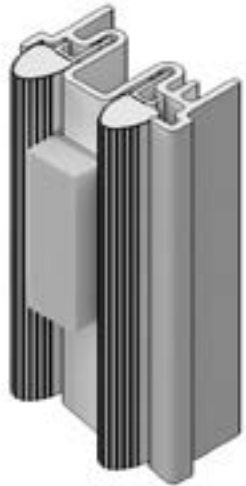
Bottom Balance Tubes		
Part Number	Balance ID Code	Length (in)
10777080	226-80	38.875
10777180	304-80	38.875
10777280	368-80	38.875
10777380	42-80	38.875
10779180	9180	38.875
10779280	9280	38.875
10779480	9480	38.875

Bottom Balance Tubes		
Part Number	Balance ID Code	Length (in)
10777082	226-82	39.875
10777182	304-82	39.875
10777282	368-82	39.875
10777382	42-82	39.875
10779182	9182	39.875
10779282	9282	39.875
10779482	9482	39.875

Bottom Balance Tubes		
Part Number	Balance ID Code	Length (in)
10777084	226-84	40.875
10777184	304-84	40.875
10777284	368-84	40.875
10777384	42-84	40.875
10779184	9184	40.875
10779284	9284	40.875
10779384	9384	40.875

## Ordering specifications for Configured Parts in OMS:

1. Unit type;
2. Interior and exterior color;
3. Unit size (call number, rough opening or frame size);
4. Sash division: Standard, Cottage, or Reverse Cottage
5. Weather strip color;
6. Jamb Carrier location (from exterior view);
  - a. Left jamb,
  - b. Right jamb.
7. Prep for through jamb.



### Jamb Carrier Assembly, Operator

V1327 Vinyl Jamb Carrier and V3179 Frame Weather Strip

NOTE: Full assembly shown for illustrative purposes only.



### Jamb/Head Jamb Carrier Assembly, Picture or Transom

V1327 Vinyl Jamb Carrier and V1474 Frame Weather Strip

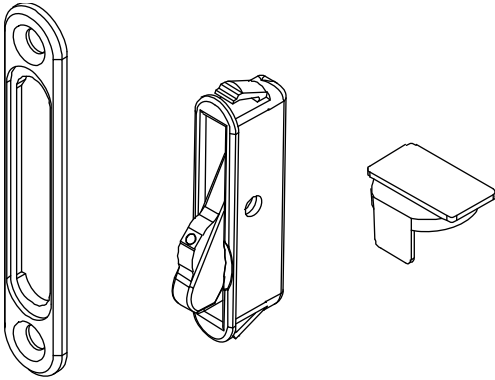
NOTE: Full assembly shown for illustrative purposes only.

# WOCD Field Applied and Replacement Kit

## Includes:

- 1 - Field installation instruction
- 1 - Hang tag
- 2 - Safety and operating instructions
- 1 - WOCD sticker
- 2 - Mini AVL WOCD
- 2 - WOCD faceplate
- 4 - WOCD faceplate screws, #6-12 x 1 1/2"
- 2 - Check rail landing pad (Clear 10501055, White 10501056, Black 10501057)

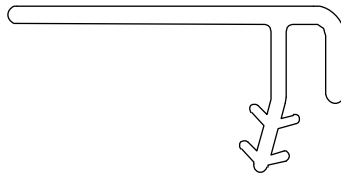
Color	PN
Beige	11903905
Black	11903906
Stone White	11903904



NOTE: For windows without factory-applied WOCD, refer to Product Bulletin 758 for more information.



To order, refer to configured Parts in OMS



**Interior Cap, Jamb/Head Jamb**

V2955

Used: 10/29/2018 - Present

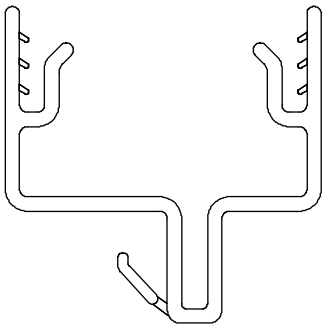
## Head Jamb Parting Stop

V1328

### Usage dates:

January 2006 to present

CN	Length	Colors and Part Numbers		
		Beige	Black	White
22	19 3/32" (485)	17003322	17005522	17005622
26	23 3/32" (587)	17003326	17005526	17005626
30	24 3/32" (688)	17003330	17005530	17005630
32	29 3/32" (739)	17003332	17005531	17005632
34	31 3/32" (790)	17003334	17005534	17005634
36	33 3/32" (841)	17003336	17005536	17005636
38	35 3/32" (891)	17003338	17005538	17005638
42	39 3/32" (993)	17003342	17005542	17005642
48	45 3/32" (1145)	17003348	17005548	17005648
54	51 3/32" (1298)	17003354	17005554	17005654



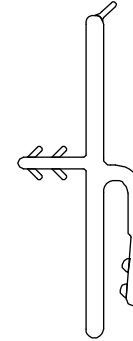
## HP Sill Cover Seal

V2531

### Usage dates:

4/27/2015 to present

CN	Length	PN
22	19 1/2" (496)	17005022
26	23 1/2" (597)	17005026
30	24 1/2" (699)	17005030
32	29 1/2" (750)	17005032
34	31 1/2" (800)	17005034
36	33 1/2" (851)	17005036
38	35 1/2" (902)	17005038
42	39 1/2" (1004)	17005042
48	45 1/2" (1156)	17005048
50	47 1/2" (1207)	17005050
54	51 1/2" (1308)	17005054
62	59 1/2" (1512)	17005062



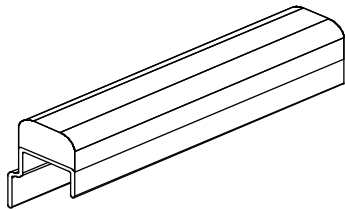
## Sash Stop

V2132

### Usage dates:

9/26/2011 to present

Description	Length	Color and Part Number		
		Beige	Black	White
Standard units	2 3/16" (56)	11870224	11880224	11890224
Egress units	1 13/32" (36)	11870144	11880144	11890144
IZ3 CN 3676 and CN 3876 IZ3 CN 3668 and CN 3868 Cottage	6 11/16" (170)	11870674	11880674	11890674
Reverse Cottage	8" (203)	11870808	11880808	11890808
Reverse Cottage	12" (305)	11870812	11880812	11890812
Reverse Cottage	13 1/2" (343)	11870813	11880813	11890813
Reverse Cottage	14 5/8" (371)	11870814	11880814	11890814
Lineal	50" (1270)	11870850	11880850	11890850



# Sill Filler, Picture/Transom

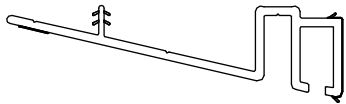
V1349

## Usage dates:

January 2006 to present

CN	Length	Colors and Part Numbers						
		Cashmere	Stone White	Pebble	Bronze	Ebony	Gunmetal	*Evergreen
22	19 1/8" (486)	17000522	17000922	17000822	17000722	17000222	17088922	17000622
26	23 1/8" (587)	17000526	17000926	17000826	17000726	17000226	17088926	17000626
30	27 1/8" (689)	17000531	17000930	17000830	17000731	17000231	17088930	17000631
32	29 1/8" (740)	17000532	17000932	17000832	17000732	17000232	17088932	17000632
34	31 1/8" (791)	17000534	17000934	17000834	17000734	17000234	17088934	17000634
36	33 1/8" (841)	17000537	17000936	17000836	17000737	17000237	17088936	17000637
38	35 1/8" (892)	17000538	17000938	17000838	17000738	17000238	17088938	17000638
42	39 1/8" (994)	17000543	17000942	17000842	17000743	17000243	17088942	17000643
48	45 1/8" (1146)	17000549	17000949	17000849	17000749	17000249	17088949	17000649
50	47 1/8" (1197)	17000550	17000950	17000850	17000750	17000250	17088950	17000650
54	51 1/8" (1299)	17000555	17000954	17000854	17000755	17000255	17088954	17000655
62	59 1/8" (1502)	17000562	17000962	17000862	17000762	17000262	17088962	17000662

NOTE: \*DISC (LA) used prior to 10/29/2022



## Top Sash Interlock, IZ3

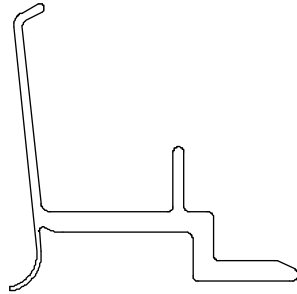
V1661

### Usage dates:

June 2008 to present

CN	Length	Color and Part Number		
		Beige	Black	White
22	19 31/32" (481)	17012922	17044922	17033922
26	23 31/32" (583)	17012926	17044926	17033926
30	24 31/32" (684)	17012930	17044930	17033930
32	29 31/32" (735)	17012932	17044932	17033932
34	31 31/32" (786)	17012934	17044934	17033934
36	33 31/32" (837)	17012936	17044937	17033937
38	35 31/32" (888)	17012938	17044938	17033938
42	39 31/32" (989)	17012942	17044943	17033943

Suggested Fasteners	
Uses 6: #7 x 1 1/4" Phillips, pan head screw	
Color	PN
Beige	11807162
Black	11807169
White	11807160



## Frame Stiffener, IZ3 (Picture/Transom)

V1668

### Usage dates:

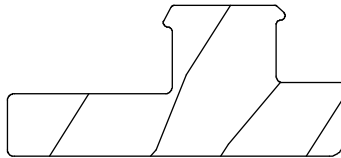
June 2008 to present

Jamb		
CN	Length	Beige PN
16	11 1/2" (479)	11896764
40	35 1/2" (902)	11896765
44	39 1/2" (1003)	11896710
48	43 1/2" (1105)	11896766
52	47 1/2" (1207)	11896767
56	51 1/2" (1308)	11896768
60	55 1/2" (1410)	11896769
64	59 1/2" (1511)	11896770
68	63 1/2" (1613)	11896771
72	67 1/2" (1715)	11896772
76	71 1/2" (1816)	11896773

Head Jamb		
CN	Length	Beige PN
22	17 1/2" (445)	11896774
26	21 1/2" (546)	11896775
30	25 1/2" (648)	11896776
32	27 1/2" (699)	11896815
34	29 1/2" (749)	11896777
36	31 1/2" (800)	11896778
38	33 1/2" (851)	11896779
42	37 1/2" (953)	11896780
50	45 1/2" (1156)	11896781
54	49 1/2" (1257)	11896782
62	57 1/2" (1461)	11896783



To order, refer to configured Parts in OMS



**Interior Stop, Jamb/Head Jamb (Picture/Transom)**

W8936

Used: January 2006 to present

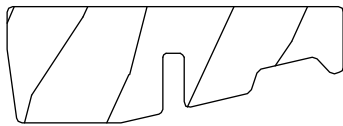
## Interior Sill Stop (Picture/Transom)

W8794

### Usage dates:

January 2006 to present

CN	Length	Finish and Part Numbers			
		Bare Wood	White	Designer Black	Clear
22	19 13/32" (493)	31510322	39210322	39219322	31610322
26	23 13/32" (593)	31510326	39210326	39219326	31610326
30	27 13/32" (696)	31510330	39210330	39219330	31610330
32	29 13/32" (747)	31510332	39210332	39219332	31610332
34	31 13/32" (798)	31510334	39210334	39219334	31610334
36	33 13/32" (849)	31510336	39210336	39219336	31610336
38	35 13/32" (899)	31510338	39210338	39219338	31610338
42	39 13/32" (1001)	31510342	39210342	39219342	31610342
48	45 13/32" (1153)	31510348	39210348	39219348	31610348
50	47 13/32" (1204)	31510350	39210350	39219350	31610350
54	51 13/32" (1306)	31510354	39210354	39219354	31610354
62	59 13/32" (1509)	31510362	39210362	39219362	31610362



## Sill Cover Kit

W10682

### Includes:

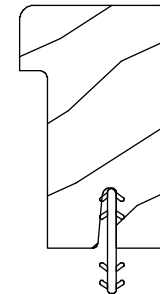
V803 connecting barb, foam tape (where applicable) and instructions

### Usage dates:

2/23/2010 to present

CN	Length	Finish and Part Number			
		Bare Wood PN	White PN	Designer Black PN	Clear PN
22	19 29/32" (506)	11897198	11897204	11897501	11897601
26	23 29/32" (608)	11897199	11897205	11897502	11897602
30	27 29/32" (709)	11897200	11897206	11897503	11897603
32	29 29/32" (760)	11897230	11897231	11897504	11897604
34	31 29/32" (811)	11897213	11897207	11897505	11897605
36	33 29/32" (862)	11897201	11897208	11897506	11897606
38	35 29/32" (912)	11897202	11897209	11897507	11897607
42	39 29/32" (1014)	11897203	11897210	11897508	11897608

Picture					
CN	Length	Finish and Part Number			
		Bare Wood	White	Designer Black	Clear
50	47 29/32" (1217)	11897018	11897021	11897509	11897609
54	51 29/32" (1319)	11897019	11897022	11897510	11897610
62	59 29/32" (1522)	11897020	11897023	11897511	11897611



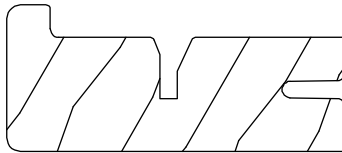
## Sill Cover, HP/IZ3

W12470

### Usage dates:

June 2008 to present

CN	Length	Finish and Part Number			
		Bare Wood	White	Designer Black	Clear
22	19 7/8" (506)	31516922	39216922	39219022	31616922
26	23 7/8" (608)	31516926	39216926	39219026	31616926
30	27 7/8" (709)	31516930	39216930	39219030	31616930
32	29 7/8" (760)	31516932	39216932	39219032	31616932
34	31 7/8" (811)	31516934	39216934	39219034	31616934
36	33 7/8" (862)	31516936	39216936	39219036	31616936
38	35 7/8" (912)	31516938	39216938	39219038	31616938
42	39 7/8" (1014)	31516942	39216942	39219042	31616942
48	45 7/8" (1014)	31516948	39216948	39219048	31616948
50	47 7/8" (1014)	31516950	39216950	39219050	31616950
54	51 7/8" (1014)	31516954	39216954	39219054	31616954
62	59 7/8" (1014)	31516962	39216962	39219062	31616962



## Double Hung HP Kit

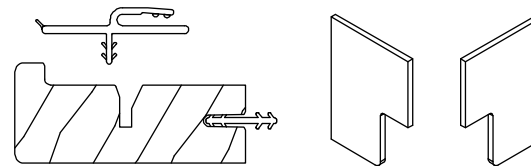
### Includes:

- 1 - W12470 HP sill cover with connecting barb
- 1 - V2531 HP sill cover seal
- 1 - Pair HP end seal gaskets
- 1 - Installation instruction

### Usage dates:

4/27/2015 to present

CN	Finish and Part Number			
	Bare Wood	White	Designer Black	Clear
22	11886122	39256122	39936922	31616922
26	11886126	39256126	39936926	33836926
30	11886130	39256130	39936930	31606130
32	11886132	39256132	39936932	33836932
34	11886134	39256134	39936934	33836934
36	11886136	39256136	39936936	33836936
38	11886138	39256138	39936938	33836938
42	11886142	39256142	39936942	33836942
48	11886148	39256148	39936948	33836948
50	11886150	39256150	39936952	33836950
54	11886154	39256154	39936954	33836954
62	11886162	39256162	39936962	33836962





## Sill Cover Kit

W8793

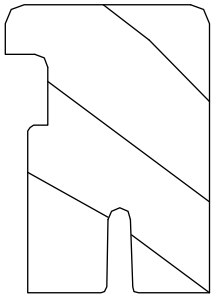
### Uses:

V803 connecting barb (not included)

### Usage dates:

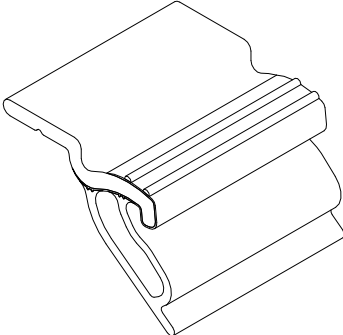
1/1/2006 to 2/22/2010

CN	Length	Finish and Part Number	
		Bare Wood	White
22	19 29/32" (506)	31509222	39209222
26	23 29/32" (608)	31509226	39209226
30	27 29/32" (709)	31509230	39209230
34	31 29/32" (811)	31509234	39209234
36	33 29/32" (862)	31509236	39209236
38	35 29/32" (912)	31509238	39209238
42	39 29/32" (1014)	31509242	39209242
50	47 29/32" (1217)	31509250	39209250
54	51 29/32" (1217)	31509254	39209254
62	59 29/32" (1522)	31509262	39209262



# Ordering Specifications for Configured Parts in OMS:

- 1. Unit type;
- 2. Unit size (call number, rough opening or frame size);
- 3. Interior and exterior color.



### Sash Bottom Rail Extension with Weather Strip

V2527

Usage: 4/27/2015 to present

Suggested Fasteners
Qty of 12 recommended. PNs will use 6 to 12 depending on size #8-15 x 3/4" Type A/Tek-2, Phillips, pan head, full thread screw.
PN
11806130

## Frame Weather Strip, Operator

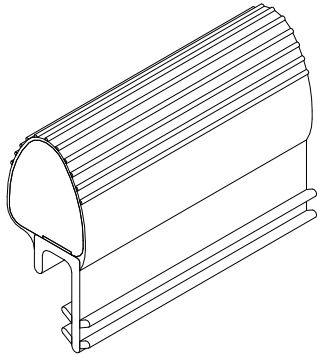
V3179

NOTE: Use the PNs shown below to replace any V3179 weather strip size.

### Usage dates:

11/16/2020 to present

CN	Length	Color	PN
Lineal	50" (1270)	Beige	27013800
		Black	28013800
		White	29013800



## Frame Weather Strip, Operator

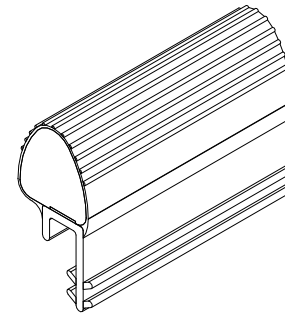
V03291

NOTE: For Field Service Use only to replace V3179. Can be used on product produced 01/2006 to present.

### Usage dates:

5/1/2023 to present

CN	Length	Color	PN
Lineal	100" (2540)	Beige	15353205
		Black	15353215
		White	15353210



## Frame Weather Strip, Picture and Transom

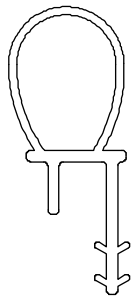
V1474

### Usage dates:

07/2007 to present

Head Jamb		
CN	Length	Beige PN
22	18 7/8" (479)	17030022
26	22 7/8" (581)	17030026
30	26 7/8" (683)	17030030
32	28 7/8" (733)	17030032
34	30 7/8" (784)	17030034
36	32 7/8" (835)	17030036
38	34 7/8" (886)	17030038
42	38 7/8" (987)	17030042
48	44 7/8" (1140)	17030049
50	46 7/8" (1191)	17030050
54	50 7/8" (1292)	17030054
62	58 7/8" (1495)	17030062

Jamb		
CN	Length	Beige PN
16	13 7/8" (352)	17030016
24	21 7/8" (556)	17030024
36	33 7/8" (860)	17030036
40	37 7/8" (962)	17030040
44	41 7/8" (1064)	17030044
48	45 7/8" (1165)	17030048
52	49 7/8" (1267)	17030052
56	53 7/8" (1368)	17030056
60	57 7/8" (1470)	17030060
64	61 7/8" (1571)	17030064
68	65 7/8" (1673)	17030068
72	69 7/8" (1775)	17030072
76	73 7/8" (1876)	17030076
84	82 3/8" (2092)	17030084
Lineal	96" (2438)	17030099



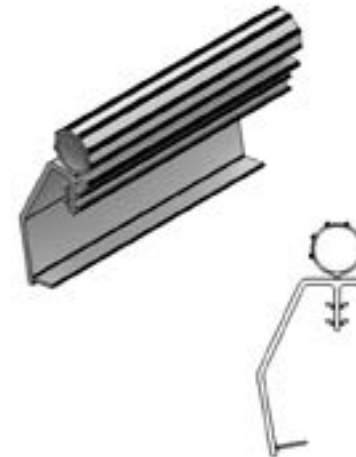
## Check Rail Weather Strip

V3203

### Usage dates:

6/21/2021 to present

Head Jamb				
CN	Length	Color and Part Number		
		Beige	Black	White
22	18 15/16" (481)	27007522	27008522	27009522
26	22 15/16" (583)	27007526	27008526	27009526
30	26 15/16" (684)	27007530	27008530	27009530
32	28 15/16" (735)	27007532	27008532	27009532
34	30 15/16" (786)	27007534	27008534	27009534
36	32 15/16" (837)	27007536	27008536	27009536
38	34 15/16" (888)	27007538	27008538	27009538
42	38 15/16" (989)	27007542	27008542	27009542
48	44 15/16" (1141)	27007548	27008548	27009548
54	50 15/16" (1298)	27007554	27008554	27009554



## Sash Stop

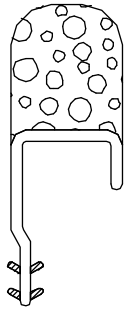
V1530

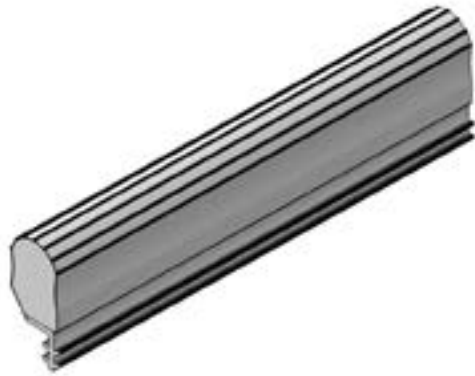
NOTE: For Field Service only

### Usage dates:

1/1/2006 to 4/18/2007

CN	Length	Beige PN
Elevate Double Hung	1 7/16" (37)	11870200
Elevate Double Hung - Egress	3/4" (19)	11870201
Lineal	96" (2438)	11870299

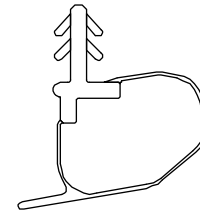




**V2510, Frame Weather Strip, Operator**

No Availability, replace with V3179.

Usage: 7/2015 to 11/16/2020

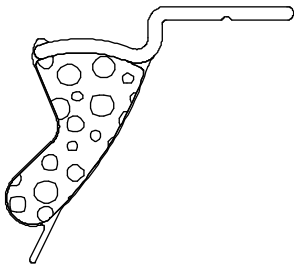


**V2550, Bottom Rail Weather Strip**

No Availability, replace with V2527.

Instructions are available under PN 19972212.

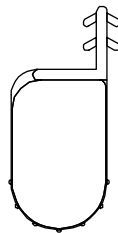
Usage: 4/27/2015 to 8/29/2016



**V1930, Bottom Sash Weather Strip**

No Availability, replace with V2527.

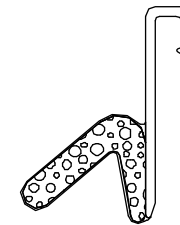
Usage: 1/1/2006 to 4/27/2015



**V2505, Frame Weather Strip**

No Availability, replace with V3179.

Usage: 8/2014 to 7/2015

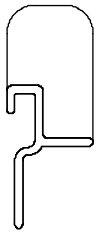


**V1463, Sill Weather Strip**

No Availability, replace with V2527.

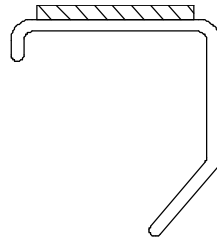
Instructions are available under PN 19972212.

Usage: 1/1/2006 to 2/22/2010



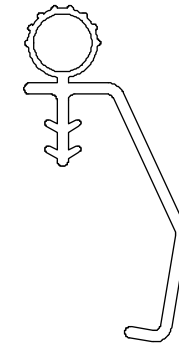
**V1582, Sash Stop**

No Availability, replace with V2132  
Usage: 1/2006 to 9/2011



**V1561, Bottom Rail Weather Strip**

No Availability, replace with V2527.  
Instructions are available (PN 19972212).  
Usage: 1/1/2006 to 2/22/2010



**Check Rail Weather Strip, V1372**

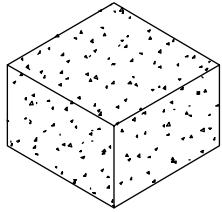
No Availability. Replace with current part  
Usage: 2/2007 to 6/21/2021

## Balance Tube Foam Plug

### Usage dates:

January 2006 to present

Color	PN
White	10500104

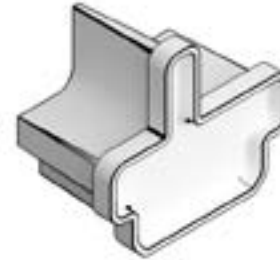


## Header End Plug

### Usage dates:

05/17/2021 to present

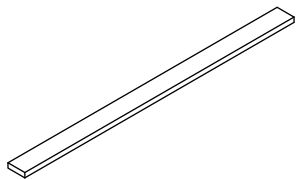
Color	LH PN	RH PN
Gray	11860406	11860405



## PVC Foam Tape

NOTE: Used for Stationary Sash Tape

Length	Color	PN
50' (15 m)	Gray	11406228



## Flexible Dust Block

NOTE: Check Rail

### Usage dates:

January 2006 to present

Color	PN
Gray	15608565





## End Seal, HP Sill Cover Kit

### Includes:

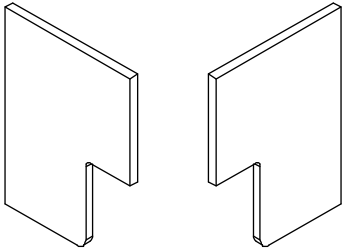
1 pair (LH and RH part)

NOTE: This is for HP and IZ3 units only

### Usage dates:

4/27/2015 to present

Color	PN
Gray	10500405



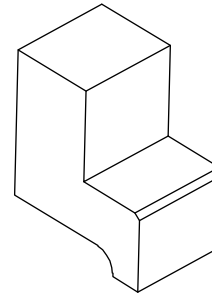
## Clutch Pocket Plug

### Usage dates:

4/30/2013 to present

White discontinued 4/5/2023

Color	PN
White	NA
Black	10601060



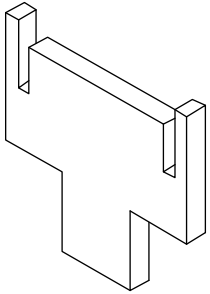
## Parting Stop End Cap Gasket

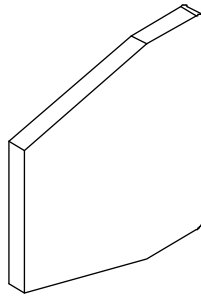
NOTE: For Field Service only

### Usage dates:

May 2016 to present.

Color	PN
Beige	10502060
Gray	10502061





**Jamb Liner Gasket**

Usage: 2/22/2010 to 8/23/2023

# Screen Replacement

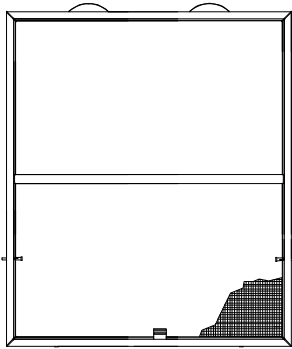
Screens are standard with a white or pebble gray aluminum surround. Standard mesh is Marvin Bright View™. Screens feature plunger type mounting system.

## To order, specify:

1. Specify full or half screen;
2. Size: Determine the outside measurement of the existing screen and find the sizes that correspond to the width and height indicated in the following charts. If there is no existing screen to determine the OM of the screen, use the Daylight Opening to OM of screen conversions shown in the chart. The daylight opening is the measurement of visible glass from the interior of the unit;
3. Color;
4. Specify cottage or equal sash when ordering CN68 height.

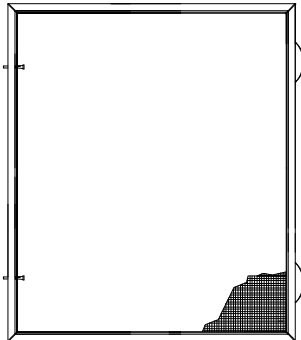
NOTE: Screen Pull Tabs are not replacable; a new screen will need to be ordered.

NOTE: Measure top and bottom sash separately when calculating screen OM height. CN36 and CN40 screens do not feature cross bars.



NOTE: OM of screen includes corner keys.

NOTE: Half screens do not feature cross bars.



## Screen sizes for Elevate Double Hung Manufactured January 2006 to present

### Daylight Opening to OM of Screen

Daylight width +3 13/16" (97) = OM width of screen  
 Daylight height x 2 +6 3/4" (171) = OM height of full screen  
 Daylight height +4 1/32" (102) = OM height of half screen

Full Screen Measurements	
CN Size	OM Width
22	19 1/2" (495)
26	23 1/2" (597)
30	27 1/2" (699)
32	29 1/2" (749)
34	31 1/2" (800)
36	33 1/2" (851)
38	35 1/2" (902)
42	39 1/2" (1003)
48	45 1/2" (1156)
54	51 1/2" (1308)
CN Size	OM Height
36	34 1/8" (867)
40	38 1/8" (968)
44	42 1/8" (1070)
48	46 1/8" (1172)
52	50 1/8" (1273)
56	54 1/8" (1375)
60	58 1/8" (1476)
64	62 1/8" (1578)
68	66 1/8" (1680)
72	70 1/8" (1781)
76	74 1/8" (1863)

Half Screen Measurements	
CN Size	OM Width
22	19 1/2" (495)
26	23 1/2" (597)
30	27 1/2" (699)
32	29 1/2" (749)
34	31 1/2" (800)
36	33 1/2" (851)
38	35 1/2" (902)
42	39 1/2" (1003)
48	45 1/2" (1156)
54	51 1/2" (1308)
CN Size	OM Height
36	17 23/32" (450)
40	19 23/32" (501)
44	21 23/32" (552)
48	23 23/32" (602)
52	25 23/32" (653)
56	27 23/32" (704)
60	29 23/32" (755)
64	31 23/32" (806)
68	33 23/32" (856)
72	35 23/32" (907)
76	37 23/32" (958)

## Screen Plunger Kit

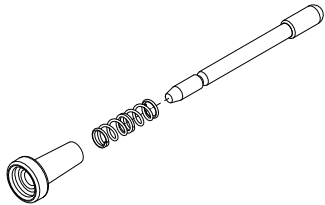
### Includes:

- 1 - Plunger spring
- 1 - Plunger
- 1 - Plunger cap

### Usage dates:

07/01/2023 to present

PN
11851059

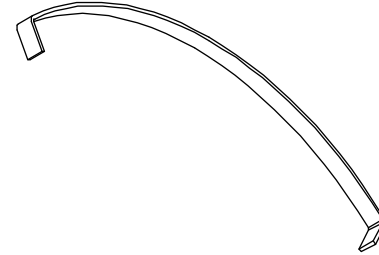


## Leaf Spring

### Usage dates:

2/26/2013 to present

PN
11900897

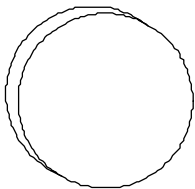


## Flat Bumper

### Usage dates:

January 2006 to present

Color	PN
Clear	11860561

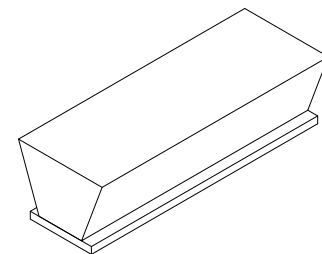


## Half Screen Pile Weather Strip

### Usage dates:

2/26/2013 to present

Color	Length	PN
Gray	Specify length	15619612

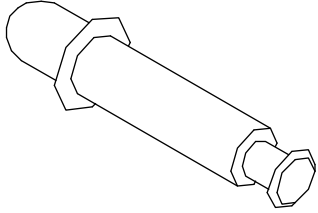


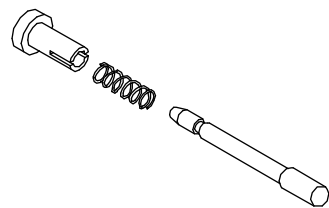
## Stationary Screen Peg

### Usage dates:

1/2006 to 2/25/2013

PN
11867852





**Plunger and Spring Assembly**

Clear cap, Off White bolt

Used until 06/30/2023, replace with current.

# Sash Replacement

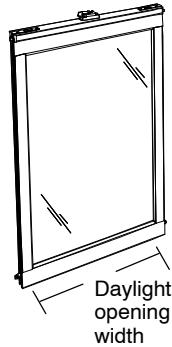
## To order, specify:

1. Top, bottom, or pair of sash;
2. Size: Use charts below
3. Sash exterior color;
4. Interior finish;
5. Hardware color;
6. Glazing.

**Top Sash Interior View**



**Bottom Sash Interior View**



NOTE: Replacement sash is supplied with weather strip and hardware. Double Hung Picture replacement sash includes attached sill filler. Daylight opening is the measurement of visible glass from the interior.

NOTE: Sash is not reglazable; glass replacement will require a new sash.

## Sash sizes for Elevate Double Hung

### Daylight Opening to OM of sash

Daylight width + 3 1/4" = OM width of sash

Daylight height + 3 1/4" = OM height of sash

Operator Sash Measurements	
CN Size	OM Width
22	18 15/16" (481)
26	22 15/16" (583)
30	26 15/16" (684)
32	28 15/16" (735)
34	30 15/16" (786)
36	32 15/16" (837)
38	34 15/16" (888)
42	38 15/16" (988)
48	44 15/16" (1141)
54	54 15/16" (1294)
CN Size	OM Height
36	16 15/16" (430)
40	18 15/16" (481)
44	20 15/16" (532)
48	22 15/16" (583)
52	24 15/16" (633)
56	26 15/16" (684)
60	28 15/16" (735)
64	30 15/16" (786)
68	32 15/16" (837)
72	34 15/16" (887)
76	36 15/16" (938)

Picture/Transom Sash Measurements	
CN Size	OM Width
22	18 15/16" (481)
26	22 15/16" (583)
30	26 15/16" (684)
32	28 15/16" (735)
34	30 15/16" (786)
36	32 15/16" (837)
38	34 15/16" (888)
42	38 15/16" (988)
48	44 15/16" (1141)
50	46 15/16" (1192)
54	50 15/16" (1294)
62	58 15/16" (1497)
CN Size	OM Height
16	12 15/16" (329)
24	20 15/16" (532)
36	32 15/16" (837)
40	36 15/16" (938)
44	40 15/16" (1040)
48	44 15/16" (1141)
52	48 15/16" (1243)
56	52 15/16" (1345)
60	56 15/16" (1446)
64	60 15/16" (1548)
68	64 15/16" (1649)
72	68 15/16" (1751)
76	72 15/16" (1853)