



# Ultimate Wood Double Hung Ultimate Wood Double Hung Insert DISC-NA 04/24/2023

## Replacement Parts

Specifications and technical data are subject to change without notice.

Numbers listed in ( ) parentheses are metric equivalents in millimeters rounded to the nearest whole number.

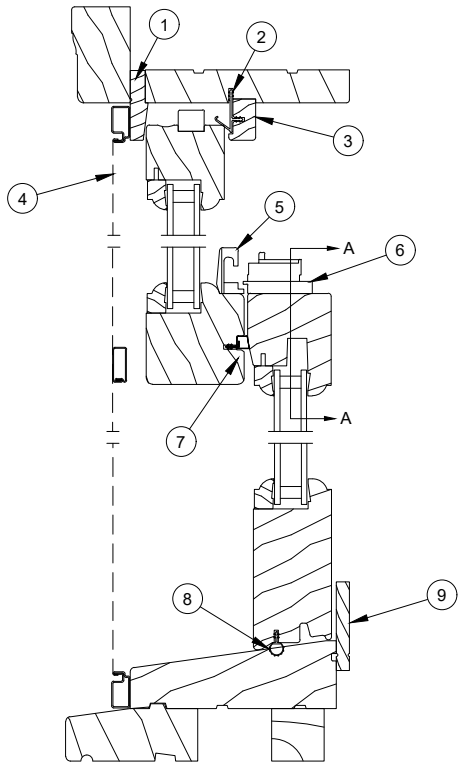
Suggested fasteners are not included and must be ordered separately.

Illustrations are not to scale.

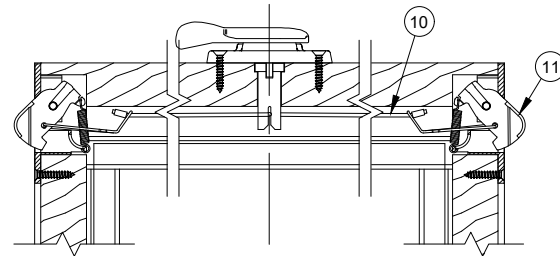
## Contents

Product History.....	2
Part ID - Ultimate Wood Double Hung/Single Hung.....	3
Part ID - Ultimate Wood Double Hung/Single Hung Transom.....	4
Part ID - Ultimate Wood Double Hung Picture 1 5/8" Sash .....	5
Part ID - Ultimate Wood Double Hung Picture - 2" Sash .....	6
Part ID - Ultimate Wood Double Hung/Single Hung Insert - DISC-NA 04/24/2023.....	7
Part ID - Ultimate Wood Double Hung Insert Transom - DISC-NA 04/24/2023 .....	8
Part ID - Ultimate Wood Double Hung Insert Picture - DISC-NA 04/24/2023 .....	9
Installation Parts.....	10
Miscellaneous Parts .....	11
Balance Tubes - Full Frame.....	16
Jamb Carriers - Full Frame.....	18
Jamb Carrier Hardware Assemblies - Full Frame .....	19
Balance Tubes and Jamb Carrier Hardware Assemblies - Insert.....	21
Vinyl Parts.....	22
Wood Parts.....	23
Weather Strip .....	25
Weather Strip - Discontinued - No Longer Available (NA) .....	26
Sash Replacement - Configured Parts in OMS .....	27
Screens .....	28
Aluminum Screen - Configured Parts in OMS.....	29
Aluminum Screen Parts .....	30
Aluminum Screen Parts - Discontinued No Availability (NA).....	31
Extruded Aluminum Screen - Configured Parts in OMS .....	32
Extruded Aluminum Screen Parts.....	33
Combination Parts.....	34

Produced	Unit Type	Features and Changes
2001	Ultimate Wood Double Hung/Single Hung	01/15/2001: Introduced (regionally to complement below) featuring tilt latch system operated at center sash lock on bottom operating sash. (DH/SH) Top operating sash released at top rail by two tilt latches. (DH) Rough opening heights are 1/16" less than Wood E-Z Tilt rough opening heights. A 1 5/8" sash with SG or .700" IG will be available in operating DH or SH units, limited picture sizes, all transom sizes and ADL units. A 2" sash with 1" IG will be available in any one-lite picture unit. A unique subsill design facilitates easy-to-mull assemblies.
2003	Ultimate Wood Double Hung Ultimate Wood Double Hung Insert, Picture 1 5/8 inch Sash, Picture 2 inch Sash, Transom	03/31/2003: Satin Taupe (TP) hardware replaces bronze as standard. 10/2003: Wood frame and sash are designed to be installed into pre-existing window frame.
2004	Ultimate Wood Double Hung	01/2004: Added Oil Rubbed Bronze and Satin Chrome to available hardware finishes 06/14/2004: Satin Nickel hardware introduced as a standard option. Polished Chrome hardware discontinued.
2006	Ultimate Wood Double Hung	03/23/2006: Both UWDH and UWDHM now use same jamb blind stop (W8950).
2007	Ultimate Wood Double Hung	10/22/2007: Created new balance tube hanger. S-hooks are no longer used.
2008	Ultimate Wood Double Hung	06/02/2008: Introduced charcoal colored high transparency screen mesh (CH HI-TRAN) as an option on all window and door products (including combinations).
2011	All	04/25/2011: Added LoE-180 as a standard option for all products. White painted interior finish option introduced for all products.
2012	Ultimate Wood Double Hung	02/27/2012: Introduced taller sizes CN40 and 42 to the product line. Introduced the option magnum screen. 10/29/2012: Interior Square Sticking/Glazing Bead option introduced. 12/17/2012: Introduced Clear interior finish option on all products.
2013	Ultimate Wood Double Hung	04/29/2013: Introduced interior stain options. Stain colors are Wheat, Honey, Leather, Hazelnut, Cabernet and Espresso.
2017	All	10/30/2017: Discontinued EP colors with exception of Stone White and Bronze
2020	All	04/27/2020: Discontinued (Disc-NA) combination colors with exception of Stone White and Bronze
2021	All	10/25/2021: Standard screen mesh changed to Marvin Bright View™ from Charcoal Fiberglass Mesh. For more information, see Product Bulletin 793.
2022	All	06/27/2022: The Aluminum Screen will be the standard for units with a frame size height of <math>\leq 54 \frac{1}{2}</math>", with an option of the Extruded Aluminum Screen available. The standard screen for any unit with a frame size height >math>54 \frac{1}{2}</math>" will be the Extruded Aluminum Screen. This improvement to screen frames includes all Ultimate and Ultimate Wood windows that accept an aluminum screen, including Round Top and Polygon shapes. See Product Bulletin 832 for more details.
2023	Ultimate Wood Double Hung Insert products	04/24/2023: The Ultimate Wood Double Hung Insert will be moved to Discontinued - No Longer Available (DISC-NA) status. Replacement and configured parts will remain available for warranty/service purposes. See Product Bulletin #867 and #874 for more details.
2024	Ultimate Wood Double Hung products	06/24/2024: Matte Black hardware is now available for Ultimate Wood Double Hung. See Product Bulletin #936 for more information. Update for Ultimate Combinations and Ultimate Wood Combinations and Energy Panels were made. See Product Bulletin #937 for more information.

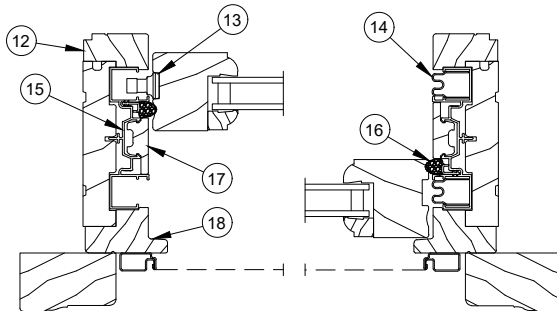


Head Jamb  
and Sill Detail

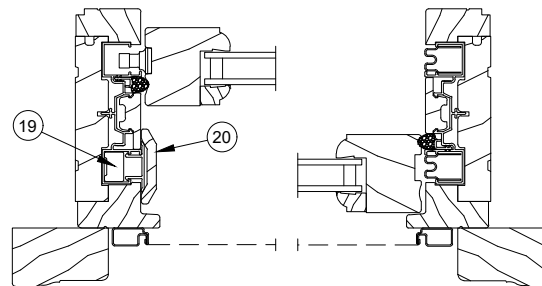


SECTION A-A

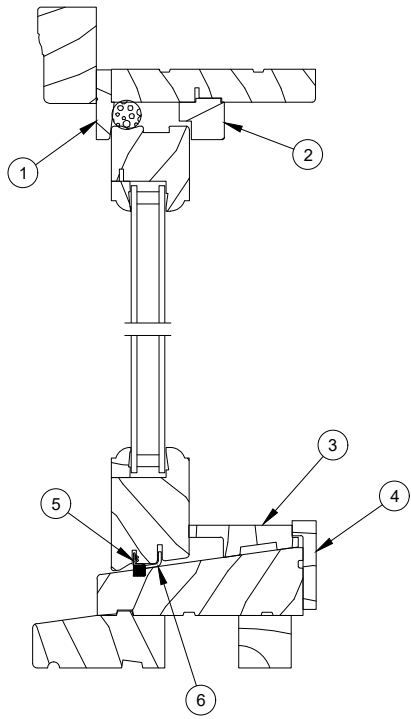
1. Top Blind Stop, W2125
2. Parting Stop Weather Strip, V945
3. Parting Stop, W2530
4. Screen
5. Sash Keeper
6. Sash Lock
7. Check Rail Weather Strip, V031
8. Weather Strip, V147
9. Sill Liner, W2146
10. Operation Cord
11. Tilt Latch End Plate Assembly
12. Interior Jamb Liner, W2127
13. Clutch Pivot Pin
14. Sash Balance Tube
15. Vinyl Jamb Carrier, V100
16. Frame Weather Strip, V03291
17. Wood Jamb Filler, W2018
18. Jamb Blind Stop, W8950
19. Sash Stop (Single Hung)
20. Jamb Carrier Filler Assembly, W2148/A216 (Single Hung)



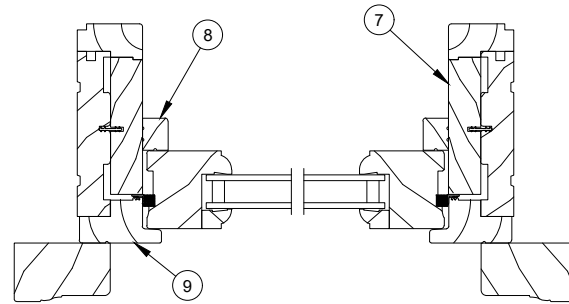
Bottom Sash      Double Hung  
Jamb Detail      Top Sash



Bottom Sash      Single Hung  
Jamb Detail      Top Sash

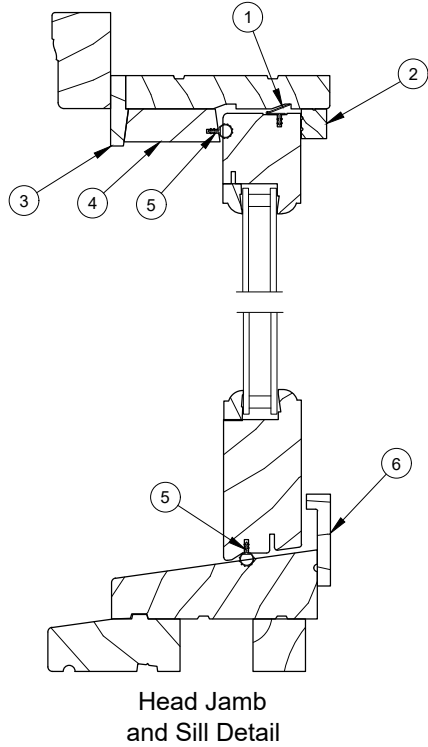


Head Jamb and Sill Detail

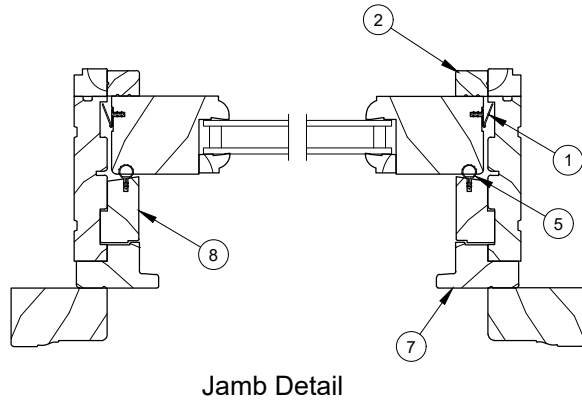


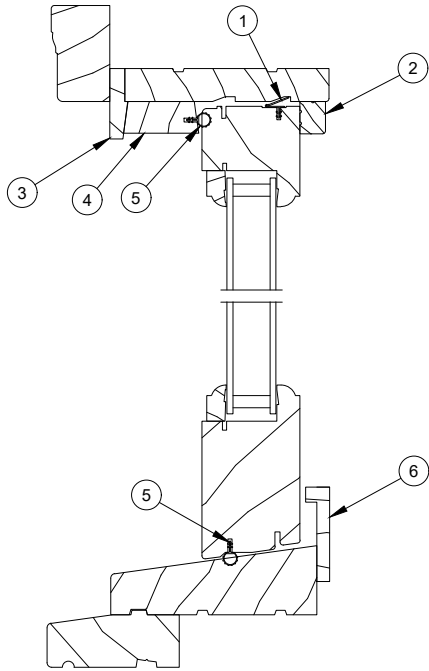
Jamb Detail

1. Top Blind Stop, W2125
2. Head Jamb Stop, W7136
3. Sill Filler, W7122
4. Sill Liner, W2179
5. Bottom Rail/Jamb Weather Strip, V031
6. Sill Bracket
7. Transom Jamb Filler, W7126
8. Interior Stop, W7134
9. Exterior Blind Stop, W8950



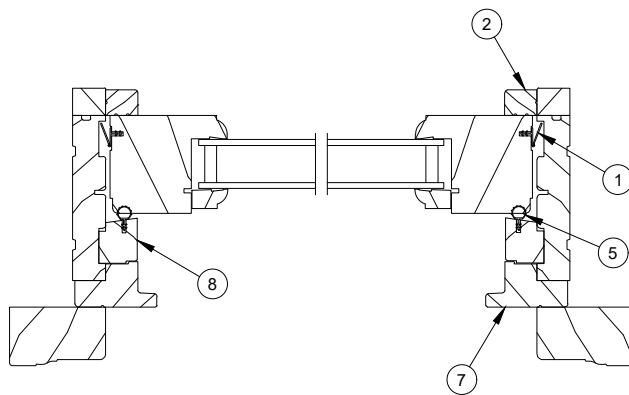
1. Vinyl Retainer, V130
2. Interior Stop, W7134
3. Top Blind Stop, W2125
4. Exterior Head Jamb Filler, 1 5/8" Picture, W2175
5. Weather Strip, V147
6. Sill Liner, W2179
7. Exterior Blind Stop, W8950
8. Exterior Jamb Filler, W2177





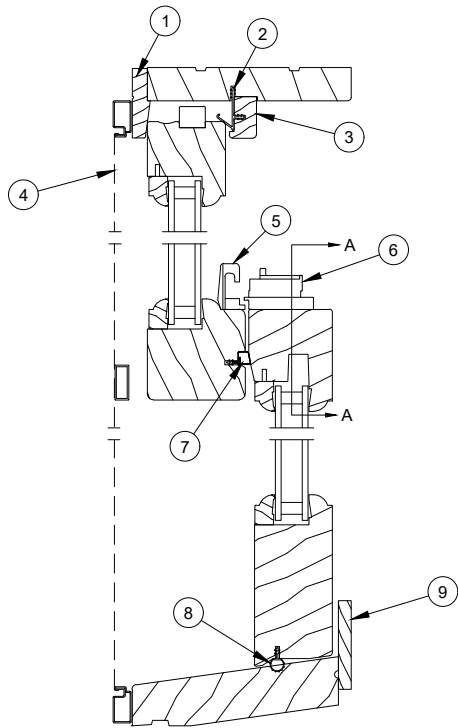
Head Jamb  
and Sill Detail

1. Vinyl Retainer, V130
2. Interior Stop, W7134
3. Top Blind Stop, W2125
4. Exterior Head Jamb Filler, 2" Picture, W7128
5. Weather Strip, V147
6. Sill Liner, W2179
7. Exterior Blind Stop, W8950
8. Exterior Filler, 2" Picture, W7131

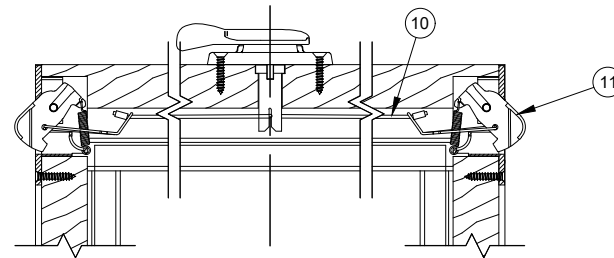


Jamb Detail

# Ultimate Wood Double Hung Insert - Disc-NA 04/24/2023

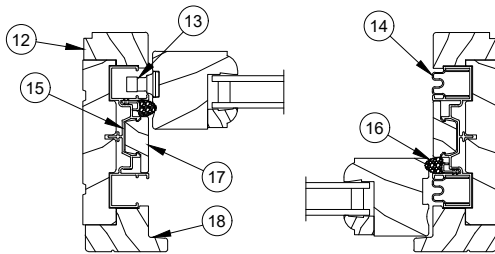


Head Jamb and Sill Detail



SECTION A-A

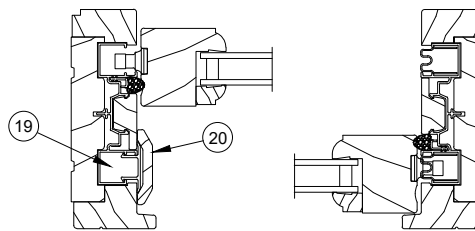
1. Top Blind Stop, W2125
2. Parting Stop Weather Strip, V945
3. Parting Stop, W2530
4. Screen
5. Sash Keeper
6. Sash Lock
7. Check Rail Weather Strip, V031
8. Weather Strip, V147
9. Sill Liner, W2146
10. Operation Cord
11. Tilt Latch End Plate Assembly
12. Jamb Liner, W2127
13. Clutch Pivot Pin
14. Sash Balance Tube
15. Vinyl Jamb Carrier, V100
16. Frame Weatherstrip, V0329
17. Wood Jamb Filler, W2018
18. Jamb Blind Stop, W8950
19. Sash Stop (Single Hung)
20. Jamb Carrier Filler Assembly, W2148/A216 (Single Hung)



Bottom Sash

Double Hung Jamb Detail

Top Sash

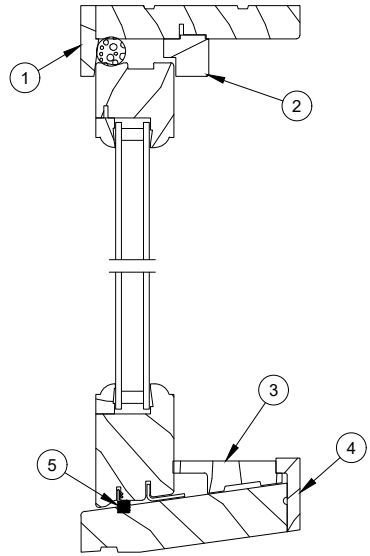


Bottom Sash

Single Hung Jamb Detail

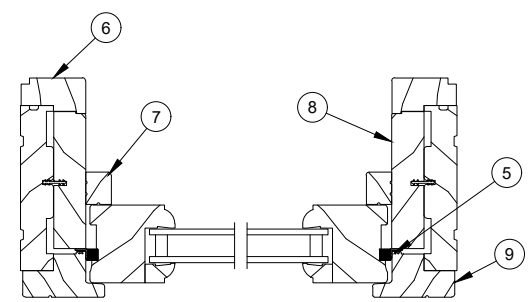
Top Sash

# Ultimate Wood Double Hung Insert - Disc-NA 04/24/2023



Head Jamb and Sill Detail

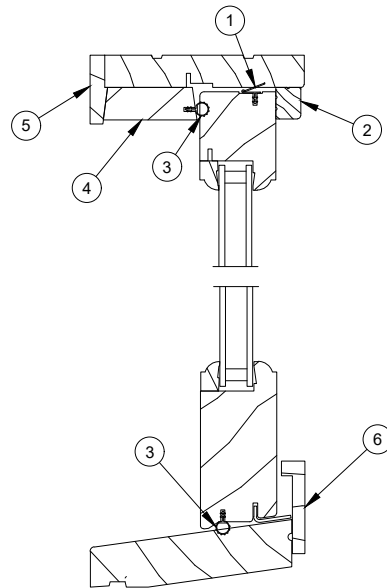
- 1. Top Blind Stop, W2125
- 2. Head Jamb Stop, W7136
- 3. Sill Filler, W7122
- 4. Sill Liner, W2179
- 5. Frame Weather Strip, V031
- 6. Interior Jamb Liner, W2127
- 7. Interior Stop, W7134
- 8. Transom Jamb Filler, W7126
- 9. Jamb Blind Stop, W8950



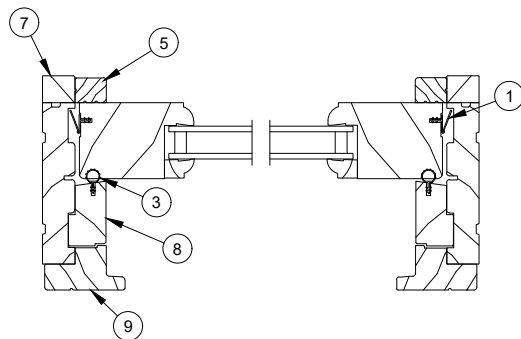
Jamb Detail



# Ultimate Wood Double Hung Insert - Disc-NA 04/24/2023



Head Jamb  
And Sill Detail



Jamb Detail

1. Vinyl Retainer, V130
2. Interior Stop, W7134
3. Weather Strip, V147
4. Exterior Head Jamb Filler, W2175
5. Top Blind Stop, W2125
6. Sill Liner, W2179
7. Jamb Liner, W21343
8. Exterior Filler, W2177
9. Jamb Blind Stop, W8950

NOTE: The Ultimate Wood Double Hung Insert Picture is the same as the Ultimate Wood Double Hung Picture, with the exception of the 8 degree undercut beveled sill (shown in Sill Detail above).

## Installation Packages (Insert only)

### Operator:

- 4 – 3/8” Flathead plugs (interior) (a)
- 2 – 5/16” #10 x 2 1/2” jamb jack screws (b)
- 4 – #7 x 2” Phillips pan head installation screws(c)
- 2 – Jamb liner check rail pads (d)

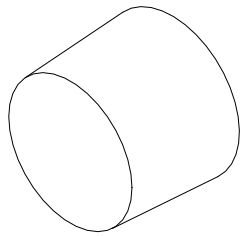
### Transom:

- 4 – 3/8” Flathead plugs (interior) (a)
- 4 – #7 x 2” Phillips pan head installation screws (c)

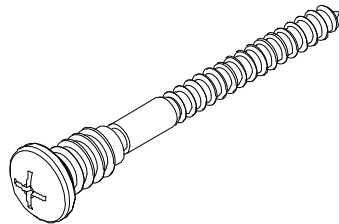
### Picture:

- 16 – #7 x 2” Phillips pan head installation screws (c)

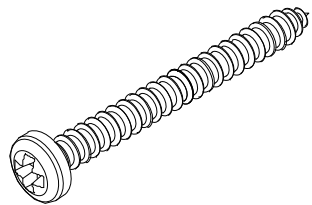
Unit Type	Color	PN
Operator	Beige	11900550
	White	11900557
Transom	-	11900537
Picture	-	11900538



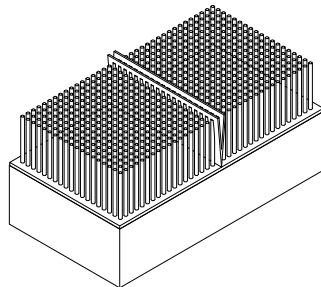
[a]



[b]



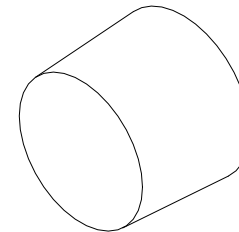
[c]



[d]

### 3/8” Flat Head Plug - Insert Units

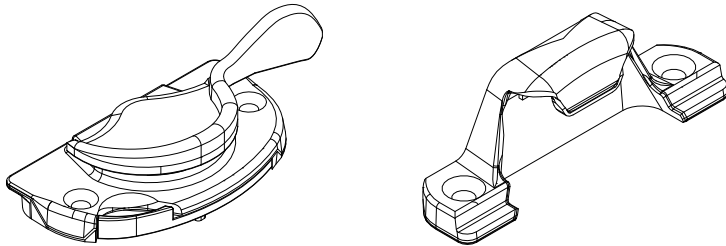
NOTE: See Miscellaneous Mouldings and Extrusions section for available part numbers.



## Sash Lock and Keeper

Each part uses 2 – #7-16x7/8", Type A-17, full thread screws (not included)

Color	Description and Part Number			
	Sash Lock	Keeper	Sash Lock and Keeper	#7-16x7/8", Type A-17, full thread screw
Satin Taupe	10500669	10500676	*11869288	11800786
Bronze	10500668	10500674	*11869287	11800779
White	10500662	10500670	*11869286	10840019
Brass	10500783	10500793	-	11800787
Antique Brass	10500789	10500799	-	11800788
Satin Chrome	10500784	10500794	-	11800789
Satin Nickel	10500788	10500798	-	11800796
Oil Rubbed Bronze	10500787	10500797	-	11800794
Polished Chrome	10500785	10500795	-	11800790
Matte Black	10500792	10500790	-	11800767
* Includes 4 - #7-16x7/8" Type A-17, full thread screws				



## Custodial Sash Lock

### Includes:

- 1 – Sash lock
- 2 – #7x7/8" Phillips flathead wood screws
- 1 – Tamper resistant screw

Color	PN
Satin Taupe	10500544
Bronze	10500545
White	10500546

No illustration available

## Tool Bit - Tampered Resistant Screw

PN
10500543

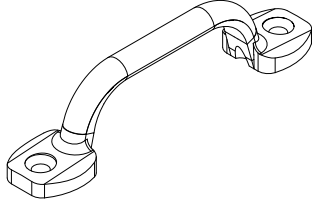
No illustration available

## Sash Lift

### Includes:

- 1 – Sash lift
- 2 – #8 x 1" Slotted oval head sheet metal screws

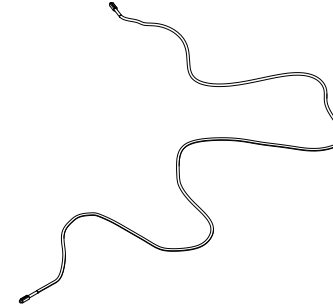
Color	PN
Satin Taupe	10500598
Bronze	10500557
White	10500556
Brass	10500558
Antique Brass	10500597
Satin Chrome	10500596
Satin Nickel	10500602
Oil Rubbed Bronze	10500601
Polished Chrome	10500595
Matte Black	10500577



## Multi-Point Tilt Latch Operation Cord

NOTE: Measure overall length for special sizes. Contact your Marvin representative to order.

CN	PN
16	10500616
20	10500620
24	10500624
26	10500626
28	10500628
30	10500630
32	10500632
36	10500636
40	10500640



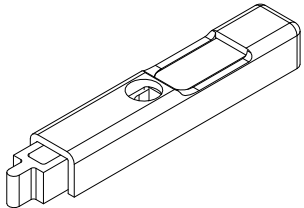
## Top Sash Tilt Latch Assembly

### Includes:

- 1 – Tilt latch assembly
- 1 – #7x1 1/4" Phillips flathead wood screws

NOTE: Ultimate Wood usage 2000 - present

Color	PN
Beige	10500555

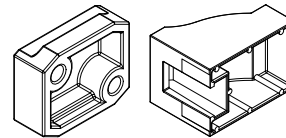


## Ogee Lug Kit

### Includes:

- 2 – Ogee Lugs
- 2 – Retainers
- 2 – #7 x 1 1/4" pan head screws

PN
11894145

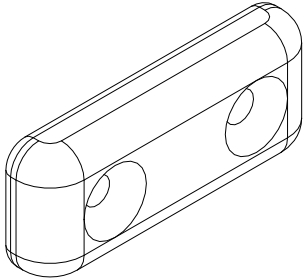


## Sash Limiter

### Includes:

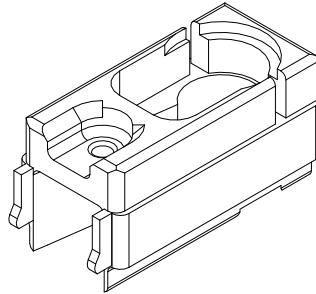
- 1 – Sash limiter
- 2 – #7 x 3/4" Phillips stainless steel screws

Color	PN
Beige	10500515



## Clutch Assembly

PN
10500551

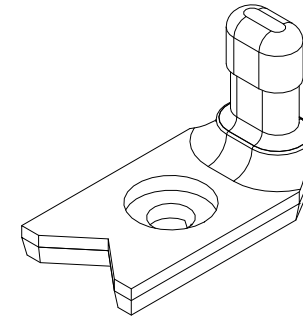


## Clutch Pivot Pin

### Includes:

- 1 – Clutch pivot
- 1 – #7x1 1/4" trim head self tapping screw

PN
10500550

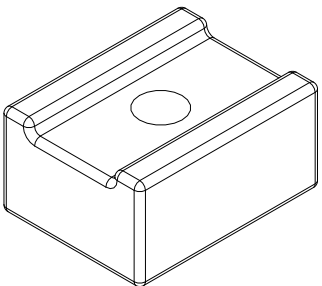


## Sash Stop

### Includes:

- 1 – Sash stop
- 2 – #8 x 1" Phillips stainless steel screws

Color	PN
Beige	10500525

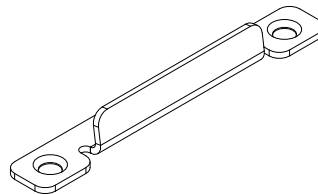


## Sill Bracket

### Includes:

- 2 – #7x3/4" flat head stainless steel screws

Color	PN
Beige	11841103
White	11841104



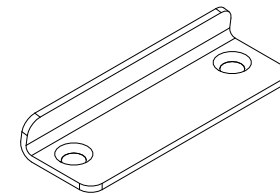
## Sill Bracket

NOTE: Picture/Transom

### Includes:

- 1 – Sill bracket
- 2 – #7 x 7/8" flat head stainless steel screws

PN
10500526

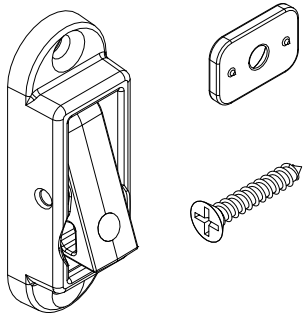


## Window Opening Control Device Kit

### Includes:

- 2 - Control devices
- 2 - Strike plates
- 6 - #7 x 7/8" color match screws
- 1 - Instruction
- 1 - WOCD label

Color	PN
White	11850640
Bronze	11850641
Brass	11850642
Satin Chrome	11850643
Polished Chrome	11850644
Antique Brass	11850645
Satin Taupe	11850646
Oil Rubbed Bronze	11850647
Satin Nickel	11850648

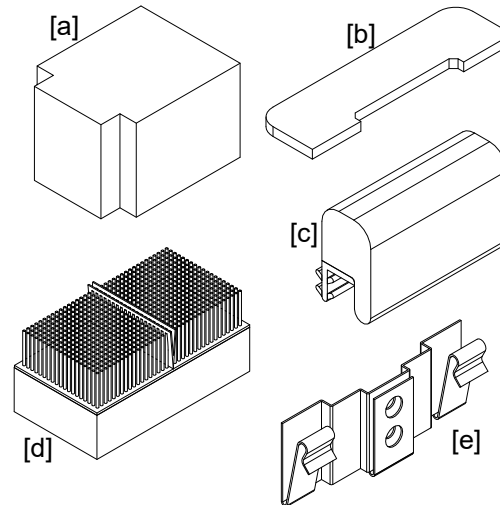


## Replacement Jamb Carrier Package

### Includes:

- 2 - Jamb liner foam plug (10500504) [a]
- 2 - Foam jamb gaskets (10500510) [b]
- 2 - Sash stop - beige (10500524), white (10500523) used on bottom sash [c]
- 2 - Check rail plug and pile weather strip - beige (10500508) , white(10500509)) [d]
- 2 - Balance tube hanger (11860044) [e]
- 2 - #7 x 7/8" A-17 flat head screws (11800727)
- 1 - Instruction

Color	PN
Beige	11850125
White	11850124

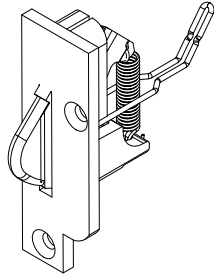


## A - Tilt Latch End Plate Assembly

### Includes:

2 - #6 x 5/8" Phillips flat head wood screws

Color	LH PN	RH PN
Beige	10500666	10500665



LH shown

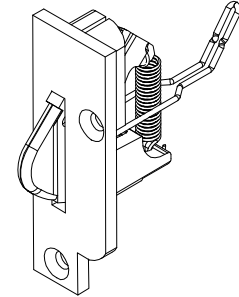
## B - Tilt Latch End Plate Assembly

### Includes:

1 - #6x1 1/2" Phillips flat head screw - Beige

1 - #6x5/8" Phillips flat head screw

Color	LH PN	RH PN
Black over mold	10500704	10500705



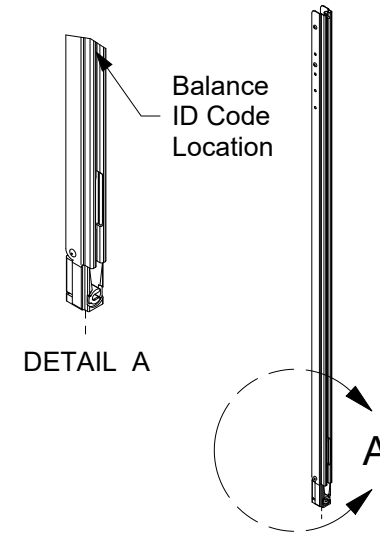
End Plate Assembly Chart										
	CN	16	20	24	26	28	30	32	36	40
CN	Wood FS	21 3/8"	25 3/8"	29 3/8"	31 3/8"	33 3/8"	35 3/8"	37 3/8"	41 3/8"	45 3/8"
12	33	A	A	A	A	A	A	A	A	A
14	37	A	A	A	A	A	A	A	A	A
16	41	A	A	A	A	A	A	A	w	A
18	45	A	A	A	A	A	A	A	A	A
20	49	A	A	A	A	A	A	A	A	A
22	53	A	A	A	A	A	A	A	A	A
24	57	A	A	A	A	A	A	A	A	A
26	61	A	A	A	A	A	A	A	A	A
28	65	A	A	A	A	A	A	B	B	B
30	69	A	A	A	A	A	A	B	B	B
32	73	A	A	A	A	A	A	B	B	B
34	77	A	A	A	A	A	A	B	B	B
36	81	A	A	A	A	A	A	B	B	B
-	85	B	B	B	B	B	B	B	B	
40	89	B	B	B	B	B	B	B	B	
42	93	B	B	B	B	B	B	B	B	
-	97	B	B	B	B	B	B	B	B	

**Balance tubes for standard units may be ordered by part number. To determine the part number, locate the ID code from the existing tube (see illustration below) and use the chart on the next page.**

Balance tubes for special sized units or insert units are not available by part number.

When ordering balance tubes for special sized units, please provide ALL the following information:

1. Original order number when possible
2. Glass height or tube assembly overall
3. Balance ID code. The ID code is imprinted on the tube (see illustration). NOTE: If the balance is oversized, a balance ID will not be available. In this case, provide the glass width, height, and makeup.
4. Specify top or bottom sash;
  - NOTE: The balance for the top sash is in the exterior track and has a mill finish color. The balance for the bottom sash is in the interior track and has a beige or white color.
5. if the tube is for the bottom sash, specify color (beige or white);
6. specify quantity. Do NOT specify as pairs or sets. If one tube is needed, specify: quantity 1. If four tubes are needed, specify: quantity 4.



NOTE: Part numbers listed are for one balance tube only. Each sash requires two balance tubes.

MILL FINISH BALANCE TUBE - TOP SASH							
CN	Spring Weight and PN						
	AA	A	B	C	D	E	F
12	10696612	10695012	10695112	10695212	10695312	-	-
14	10696614	10695014	10695114	10695214	10695314	10695414	-
16	10696616	10695016	10695116	10695216	10695316	10695416	-
18	10696618	10695018	10695118	10695218	10695318	10695418	-
20	10696620	10695020	10695120	10695220	10695320	10695420	-
22	10696622	10695022	10695122	10695222	10695322	10695422	10695522
24	10696624	10695024	10695124	10695224	10695324	10695424	10695524
26	10696626	10695026	10695126	10695226	10695326	10695426	10695526
28	10696628	10695028	10695128	10695228	10695328	10695428	10695528
30	10696630	10695030	10695130	10695230	10695330	10695430	10695530
32	10696632	10695032	10695132	10695232	10695332	10695432	10695532
34	10696634	10695034	10695134	10695234	10695334	10695434	10695534
36	10696636	10695036	10695136	10695236	10695336	10695436	10695536



NOTE: Part numbers listed are for one balance tube only. Each sash requires two balance tubes.

<b>BEIGE BALANCE TUBE - BOTTOM SASH</b>							
<b>CN</b>	<b>Spring Weight and PN</b>						
	<b>AA</b>	<b>A</b>	<b>B</b>	<b>C</b>	<b>D</b>	<b>E</b>	<b>F</b>
12	10696712	10696012	10696112	10696212	10696312	-	-
14	10696714	10696014	10696114	10696214	10696314	10696414	-
16	10696716	10696016	10696116	10696216	10696316	10696416	-
18	10696718	10696018	10696118	10696218	10696318	10696418	-
20	10696720	10696020	10696120	10696220	10696320	10696420	-
22	10696722	10696022	10696122	10696222	10696322	10696422	10696522
24	10696724	10696024	10696124	10696224	10696324	10696424	10696524
26	10696726	10696026	10696126	10696226	10696326	10696426	10696526
28	10696728	10696028	10696128	10696228	10696328	10696428	10696528
30	10696730	10696030	10696130	10696230	10696330	10696430	10696530
32	10696732	10696032	10696132	10696232	10696332	10696432	10696532
34	10696734	10696034	10696134	10696234	10696334	10696434	10696534
36	10696736	10696036	10696136	10696236	10696336	10696436	10696536

<b>WHITE BALANCE TUBE - BOTTOM SASH</b>							
<b>CN</b>	<b>Spring Weight and PN</b>						
	<b>AA</b>	<b>A</b>	<b>B</b>	<b>C</b>	<b>D</b>	<b>E</b>	<b>F</b>
12	10686712	10686012	10686112	10686212	10686312	-	-
14	10686714	10686014	10686114	10686214	10686314	10686414	-
16	10686716	10686016	10686116	10686216	10686316	10686416	-
18	10686718	10686018	10686118	10686218	10686318	10686418	-
20	10686720	10686020	10686120	10686220	10686320	10686420	-
22	10686722	10686022	10686122	10686222	10686322	10686422	10686522
24	10686724	10686024	10686124	10686224	10686324	10686424	10686524
26	10686726	10686026	10686126	10686226	10686326	10686426	10686526
28	10686728	10686028	10686128	10686228	10686328	10686428	10686528
30	10686730	10686030	10686130	10686230	10686330	10686430	10686530
32	10686732	10686032	10686132	10686232	10686332	10686432	10686532
34	10686734	10686034	10686134	10686234	10686334	10686434	10686534
36	10686736	10686036	10686136	10686236	10686336	10686436	10686536

## Ultimate Wood Double Hung manufactured after 01/15/2001

Replacement jamb carriers include top gaskets (1), sash stops (2), foam plugs (3), check rail plugs (4), jamb weather strip (5 - top) and (6 - bottom), and pair of vinyl jamb carriers (7).

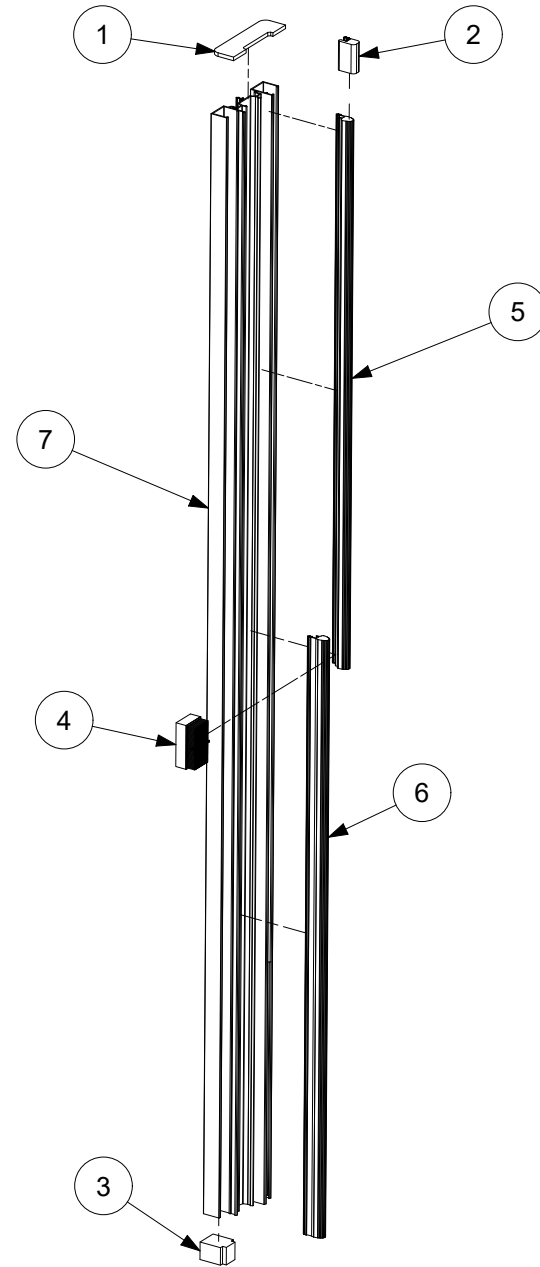
Jamb carriers for standard units may be ordered by part number from the chart below.

When ordering jamb carriers for special sized units, please provide the following information:

1. Original order number, when available
2. Length (see Dimension A as shown)
3. Color (beige or white).
4. If unequal glass heights, provide both glass heights.

NOTE: Jamb carriers must be ordered in pairs.

Glass height (one sash)	Beige PN	White PN
12" pair	10697012	10696912
14" pair	10697014	10696914
16" pair	10697016	10696916
18" pair	10697018	10696918
20" pair	10697020	10696920
22" pair	10697022	10696922
24" pair	10697024	10696924
24/36" pair	10697060	10696960
26" pair	10697026	10696926
28" pair	10697028	10696928
30" pair	10697030	10696930
32" pair	10697032	10696932
34" pair	10697034	10696934
36" pair	10697036	10696936



Replacement jamb carriers include top gaskets (1), sash stops (2), foam plugs (3), check rail plugs (4), jamb weather strip (5 - top) and (6 - bottom), vinyl jamb carriers (7), balance hangers (8), bottom (9) and top balance tubes (10) with clutch (11).

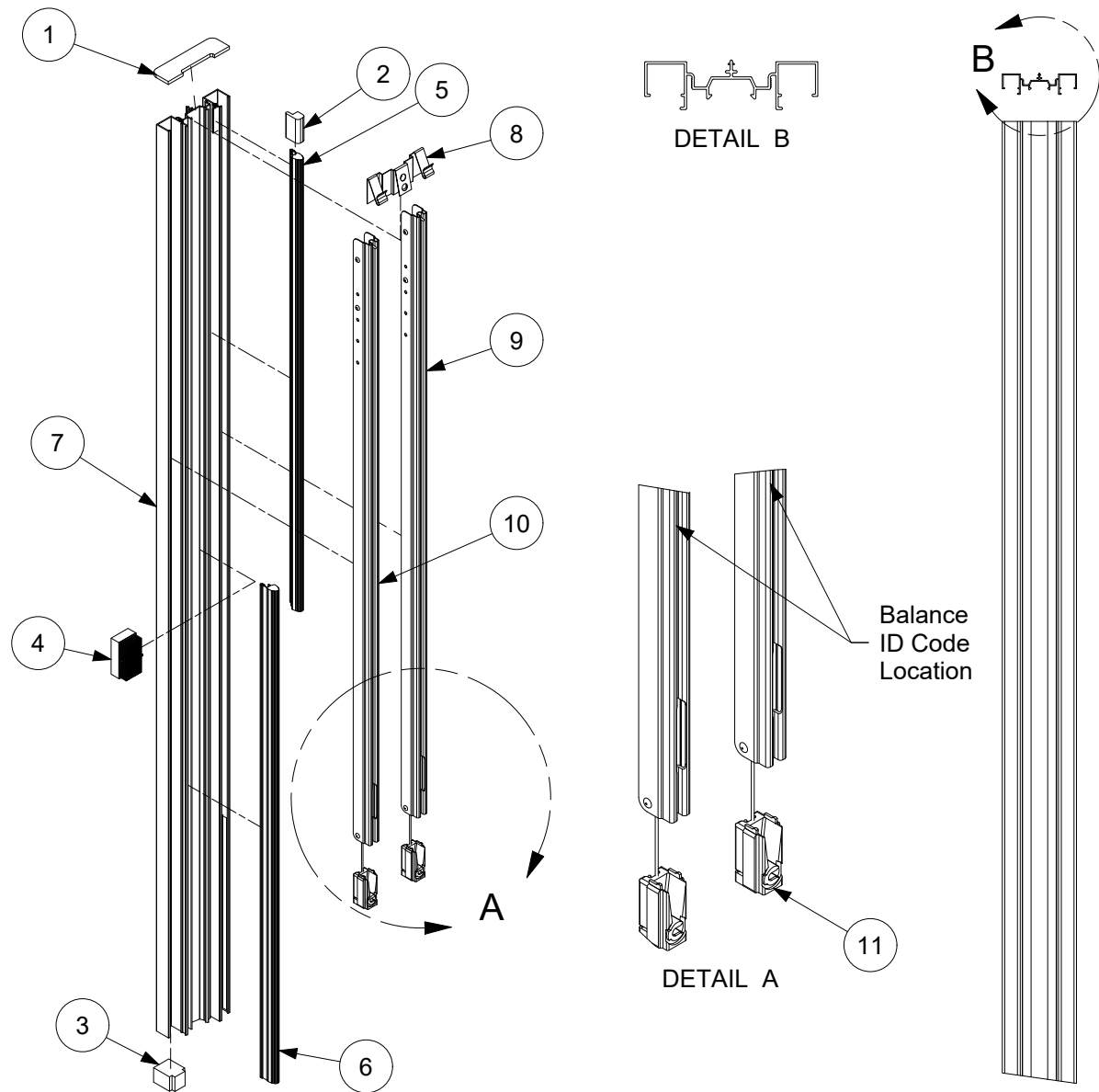
NOTE: Balance tube hangers replaced S-hooks in February, 2008.

NOTE: Jamb carrier hardware assemblies must be ordered in pairs.

Assemblies for standard units may be ordered by part number from the chart on the next page.

When ordering jamb carrier hardware assemblies complete for special units, include the following information:

1. Original order number, if available;
2. Length (see dimension A as shown) or rough opening height;
3. If unequal glass heights, provide both heights;
4. Balance ID code (s)\*. The ID code is imprinted on the tube (see illustration);
5. Color (beige or white).
  - If the balances are over sized, a balance ID will not be available. In this case, provide the glass width, height and make-up.



CN	BEIGE (PAIRS)					
	Spring Weight and PN					
	A	B	C	D	E	F
12	10535012	10535112	10535212	10535312	-	-
14	10535014	10535114	10535214	10535314	10535414	-
16	10535016	10535116	10535216	10535316	10535416	-
18	10535018	10535118	10535218	10535318	10535418	-
20	10535020	10535120	10535220	10535320	10535420	-
22	10535022	10535122	10535222	10535322	10535422	10535522
24	10535024	10535124	10535224	10535324	10535424	10535524
24/36	10535060	10535160	10535260	10535360	10535460	10535560
26	10535026	26105351	10535226	10535326	10535426	10535526
28	10535028	10535128	10535228	10535328	10535428	10535528
30	10535030	10535130	10535230	10535330	10535430	10535530
32	10535031	10535134	10535232	10535332	10535432	10535532
34	10535034	10535134	10535234	10535334	10535434	10535534
36	10535036	10535136	10535236	10535336	10535436	10535536

CN	WHITE (PAIRS)					
	Spring Weight and PN					
	A	B	C	D	E	F
12	10534012	10534112	10534212	10534312	-	-
14	10534014	10534114	10534214	10534314	10534414	-
16	10534016	10534116	10534216	10534316	10534416	-
18	10534018	10534118	10534218	10534318	10534418	-
20	10534020	10534120	10534220	10534320	10534420	-
22	10534022	10534122	10534222	10534322	10534422	10534522
24	10534024	10534124	10534224	10534324	10534424	10534524
24/36	10534060	10534160	10534260	10534360	10534460	10534560
26	10534026	10534126	10534226	10534326	10534426	10534526
28	10534028	10534128	10534228	10534328	10534428	10534528
30	10534060	10534130	10534230	10534330	10534430	10534530
32	10534032	10534132	10534232	10534332	10534432	10534532
34	10534034	10534134	10534234	10534334	10534434	10534534
36	10534036	10534136	10534236	10534336	10534436	10534536

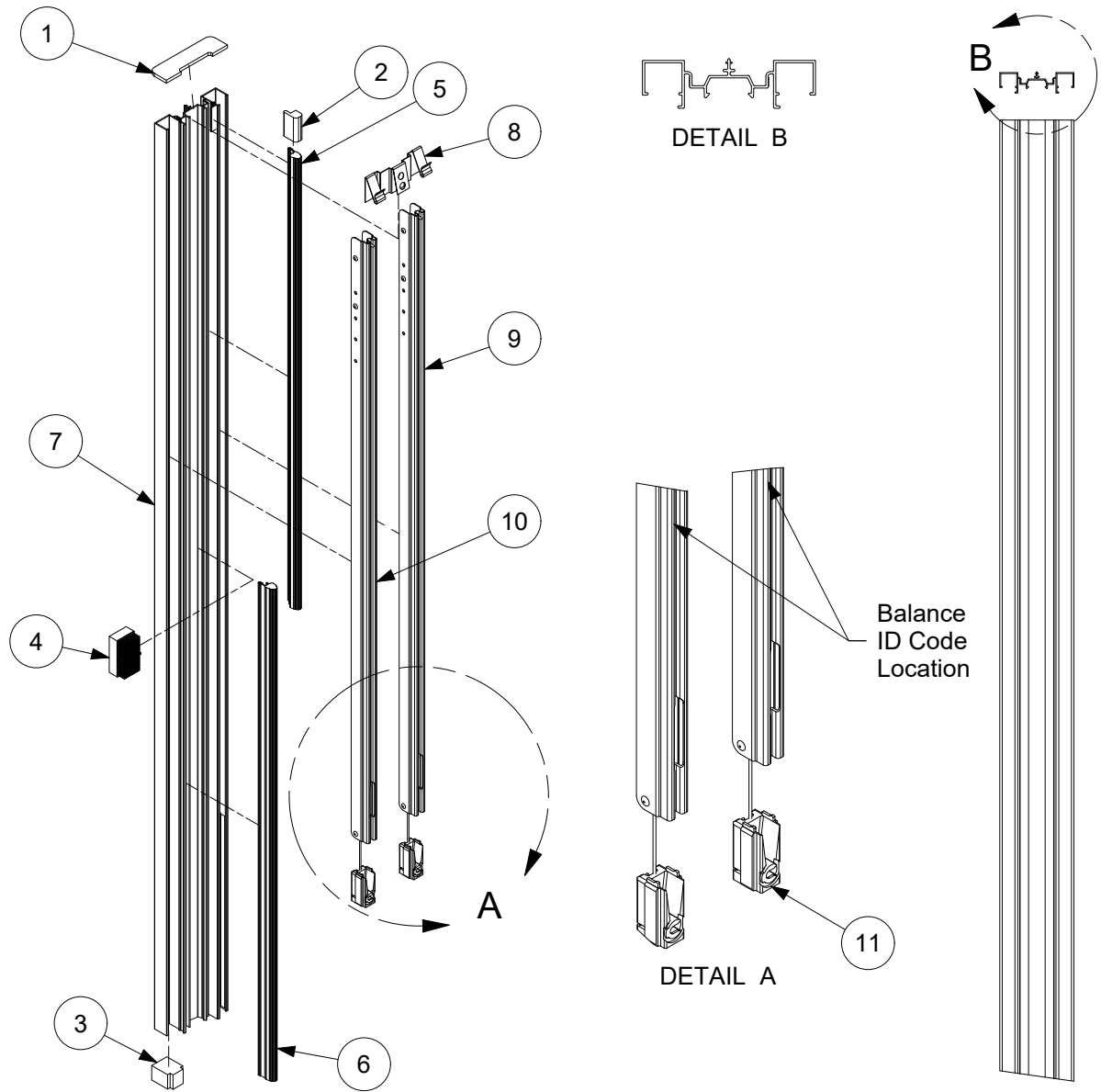
Balance Tubes and Jamb Carrier Hardware Assemblies are not available by part number for Insert units.

**To order balance tubes, specify:**

1. Original order number
2. Balance tube length
3. Balance ID code; information is imprinted on tube, (see illustration).
4. Top or bottom sash. Balance in exterior track has a mill finish tube for top sash, balance in interior track has a beige color tube for bottom sash.

**To order jamb carrier hardware assemblies, specify:**

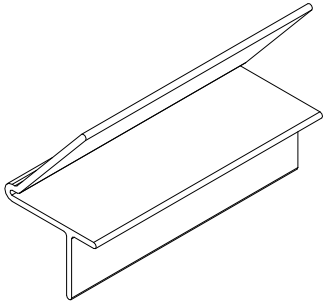
1. Original order number.
2. Length (dimension A from illustration B)
3. Glass height and width of one sash (daylight opening + 1 1/16"). Measure both sash if they are not of equal size.
4. Balance ID Code for top and bottom sash balance spring weights. (See illustration).



## Sash Retainer, Picture/Transom

V130

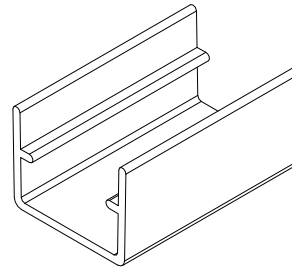
Length	PN
100" (2540)	15350099



## Top Sash Stop

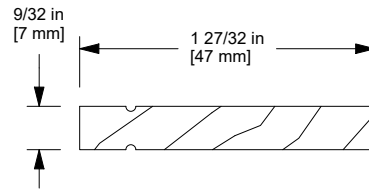
V1172

Length	Color	PN
8" (2540)	Beige	16211008
	Stone White	16210908

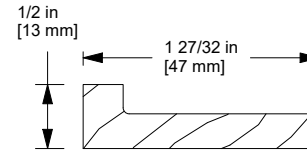


**To order, specify:**

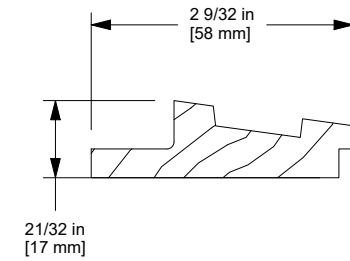
1. Original order/line number;
2. profile number
3. length;
4. call number or rough opening
5. finish.



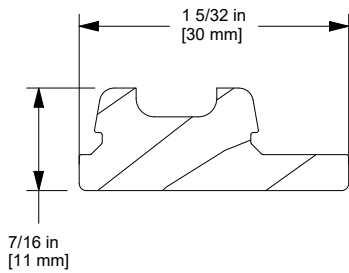
**W2146**  
Sill Liner



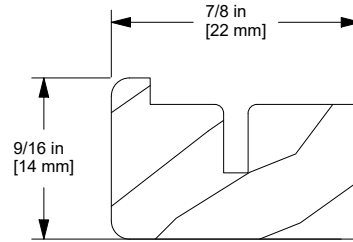
**W2179**  
Sill Liner  
Transom/Picture



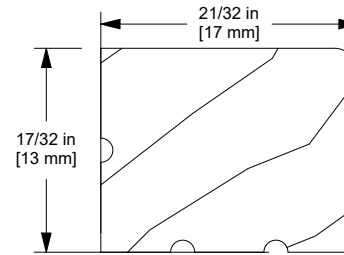
**W7122**  
Interior Sash Stop  
Picture/Transom



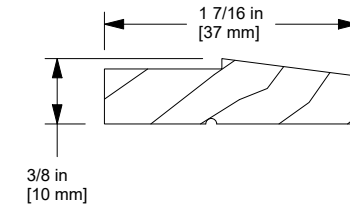
**W2018**  
Wood Jamb Filler  
Operator



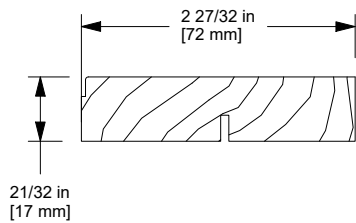
**W2530**  
Head Jamb Parting Stop



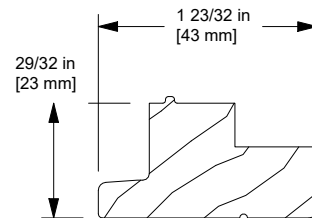
**W7134**  
Interior Stop



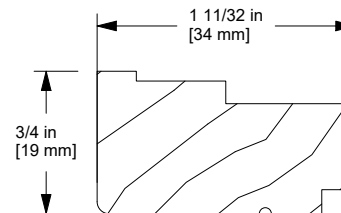
**W2125**  
Top Blind Stop



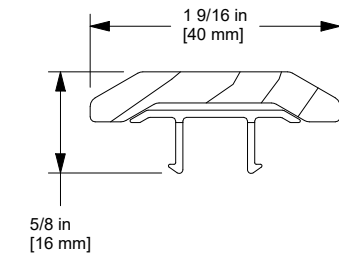
**W7126**  
Jamb Filler,  
Transom



**W8950**  
Jamb Blind Stop



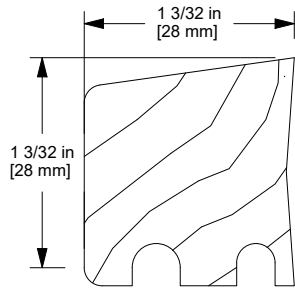
**W2127**  
Interior Jamb Liner



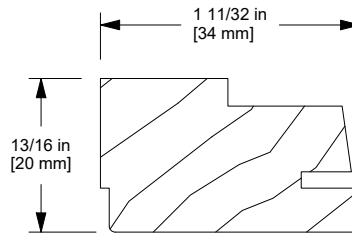
**W2148/A216**  
Jamb Carrier Filler Assembly  
Single Hung

**To order, specify:**

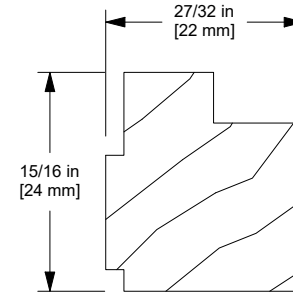
1. Original order/line number;
2. profile number
3. length;
4. call number or rough opening
5. finish.



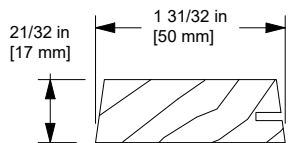
**W2139**  
**Sill Nosing**



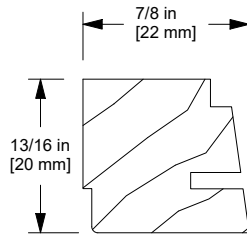
**W2177**  
**Exterior Jamb Filler**  
**1 5/8" Picture**



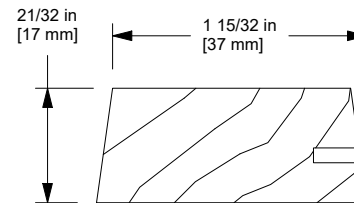
**W7136**  
**Head Jamb Parting Stop**  
**Transom**



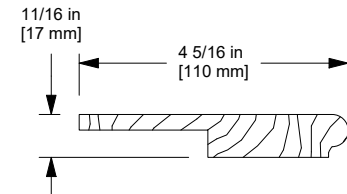
**W2175**  
**Exterior Jamb Head**  
**Jamb Filler**



**W7131**  
**Exterior Jamb Filler**  
**2" Picture**



**W7128**  
**Head Jamb Exterior Filler**  
**2" Picture**



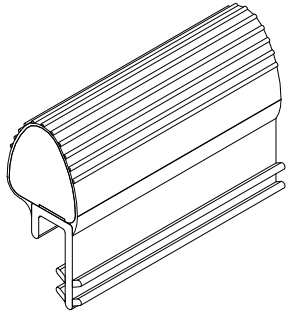
**W7051**  
**Stool (field applied)**



## Frame Weather Strip

V03291

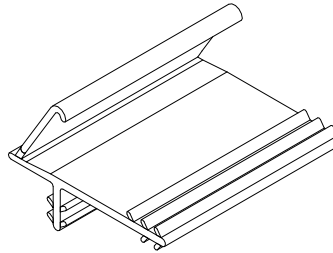
Length	Color	PN
100" (2540)	Beige	15353205
	White	15353210



## Head Jamb Parting Stop Weather Strip

V945

Length	Color	PN
70" (1778)	Beige	15352470

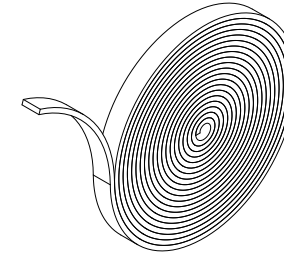


## Foam Tape

25' Roll

NOTE: Used as Frame Weather Strip on Picture/Transom

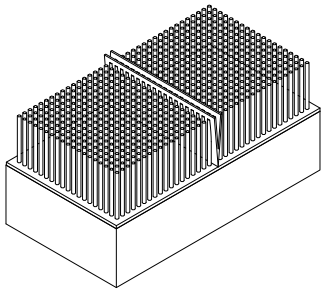
Color	PN
Gray	11406223



## Check Rail Plug and Pile Weather Strip, Insert Units

3/4" x 13/16" x 1 1/2"

Color	PN
Beige	10500508
White	10500509

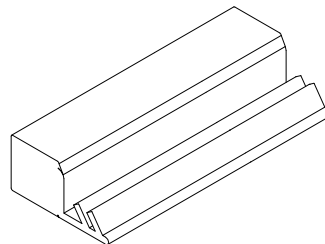


## Weather Strip, Rail

V031

NOTE: Used on Top Check Rail and Transom Frame

Length	Color	PN
Specify length	Beige	15351799

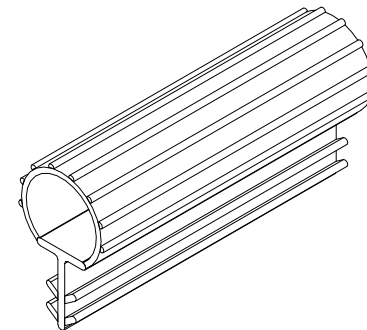


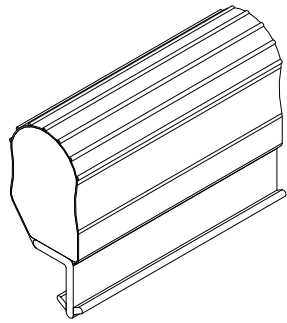
## Weather Strip

V147

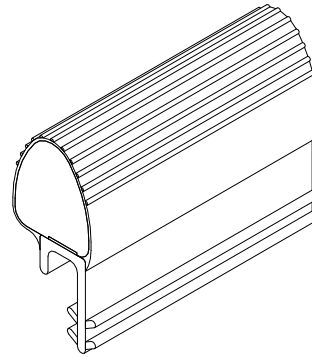
NOTE: Used at bottom rail and exterior fillers.

Length	Beige PN
150" (3810)	15351699





**V2838**  
**Frame Weather Strip**  
No longer available,  
replace with V03291



**V3179**  
**Frame Weather Strip**  
No longer available,  
replace with V03291

**Replacement sash are available as Configured Parts in OMS.**

Screens are standard with aluminum surround, Standard screen mesh is Marvin Bright View™. Aluminum mesh is available as an option in Charcoal, Black, Bright Aluminum, and Bright Bronze. Determine the outside measurement of the existing screen. Find the sizes that correspond to the width and height indicated on the following charts. Surrounds are available in all standard and select colors.

Ultimate windows with a Frame Size > 54.5" will receive the Extruded Aluminum Screen as the standard. Frame Size <= to 54.5" will receive the Aluminum Screen as the standard. Any window with a frame size <= to 54.5" can purchase the Extruded Aluminum Screen as an option.

Replacement Aluminum Screens are available as Configured Parts in OMS

NOTE: DLO Information listed below

**Screen Sizes for Ultimate Wood Double Hung  
manufactured after 1/15/2001**

**Daylight Opening of one sash (if equal height) to OM of screen**

Daylight Width + 4 15/16" = OM Width of Screen

Daylight Height x2 + 9 9/32" = OM Height of Screen

**Screen Sizes for Ultimate Wood Double Hung Insert**

**Daylight Opening of one sash (if equal height) to OM of screen**

Daylight Width + 4 31/32" = OM Width of Screen

Daylight Height x2 + 9 9/32" = OM Height of Screen

**Screen Sizes for Ultimate Wood Single Hung  
manufactured after 1/15/2001**

**Ultimate Wood Single Hung Insert**

**Daylight Opening to OM of Half Screen**

Daylight Width + 4 15/16" = OM Width of Half Screen

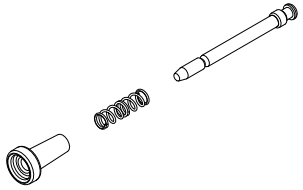
Daylight Height + 5 13/16" = OM Height of Half Screen

## Screen Plunger Kit

### Includes:

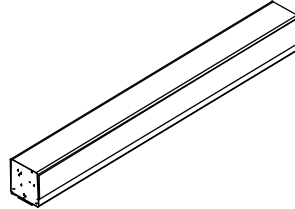
- 1 - Plunger bolt
- 1 - Plunger spring
- 1 - Plunger cap, Black

PN
11851053



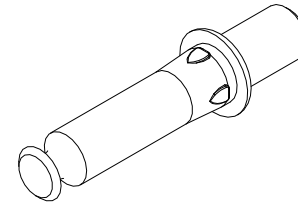
## Half Screen Foam Liner

Length	Color	PN
84" (2134)	Black	10500028



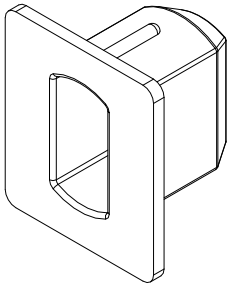
## Top Rail Screen Pin

PN
11867852



## Screen Mounting Receptacle

PN
11867851

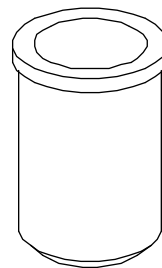


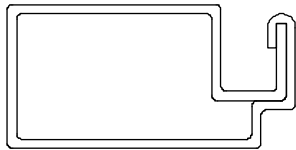
## Insert Screen Kit

### Includes:

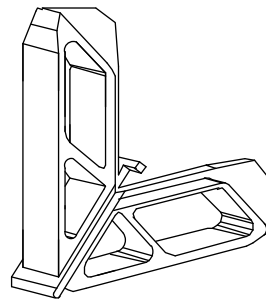
4 screen receptacles and instructions.

PN
11900576

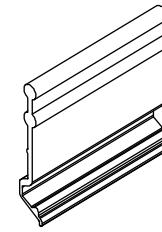




**A135, Screen Surround**  
No longer available



**Screen Corner Key**  
No longer available



**Screen Pull Tab**  
No longer available

## Replacement Extruded Screens are available as Configured Parts in OMS

NOTE: DLO Information listed below

### **Full Screen, Extruded Aluminum**

DLO of one sash (if equal height) to OM of screen.

DLO Width + 4 15/16" = OM Width of Screen

DLO Height x 2 + 9 1/4" = OM Height of Screen

### **Full Screen for Insert, Extruded Aluminum**

DLO Width + 4 31/32" = OM Width of Screen

DLO Height x 2 + 9 9/32" = OM Height of Screen

### **Half Screen, Extruded Aluminum**

Daylight Opening to OM of Half Screen

Daylight Width + 4 15/16" = OM Width of Screen

Daylight Height + 6 1/16" = OM Height of Screen

### **IZ3 Full and Half Screen, Extruded Aluminum**

Daylight Opening to OM of Full Screen

Daylight Width + 6 9/16" = OM Width of Screen Daylight

Height x 2 + 10 1/16" = OM Height of Screen

### **Daylight Opening to OM of Half Screen**

Daylight Width + 6 9/16" = OM Width of Screen Daylight

Height + 6 3/32" = OM Height of Screen

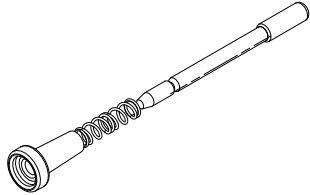


## Plunger and Spring Assembly

### Includes:

- 1 - Plunger bolt
- 1 - Plunger spring
- 1 - Plunger cap, Black

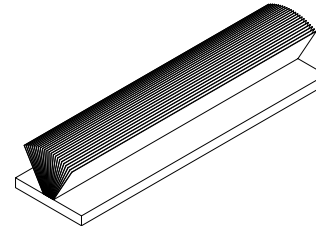
PN
10500706



## Sash Pile Weather Strip

V2173

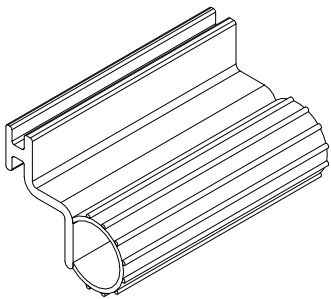
Length	Color	PN
Specify length	Gray	15607501



## Half Screen Weather Strip

V2113

Length	Color	PN
Specify length	Beige	15361399

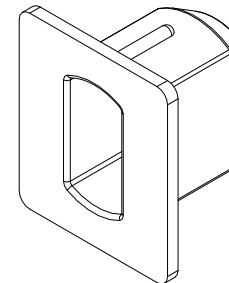


## Screen Mounting Kit

### Includes:

- 6 - Screen mounting receptacles
- 1 - Instruction sheet

PN
11867851



For Combinations and Energy Panel Availability and Replacement Parts, see Replacement Parts section:  
“Ultimate and Ultimate Wood Window Combinations and Energy Panels”