

Coastline Outswing/Inswing Pivot Door IZ4

THESE DOORS ARE RATED FOR LARGE & SMALL MISSILE IMPACT. SHUTTERS ARE NOT REQUIRED.

SEE SHEETS 2 THRU 6 FOR DESIGN LOAD CAPACITIES.

THIS PRODUCT HAS BEEN DESIGNED AND TESTED TO COMPLY WITH THE REQUIREMENTS OF THE 2020 (7TH EDITION)/2023 (8TH EDITION) FLORIDA BUILDING CODE INCLUDING HIGH VELOCITY HURRICANE ZONE (HVHZ).

1BY OR 2BY WOOD BUCKS & BUCK FASTENERS BY OTHERS, MUST BE DESIGNED AND INSTALLED ADEQUATELY TO TRANSFER APPLIED PRODUCT LOADS TO THE BUILDING STRUCTURE.

ANCHORS SHALL BE CORROSION RESISTANT, SPACED AS SHOWN ON DETAILS AND INSTALLED PER MANUF'S INSTRUCTIONS. SPECIFIED EMBEDMENT TO BASE MATERIAL SHALL BE BEYOND WALL DRESSING OR STUCCO.

A LOAD DURATION INCREASE IS USED IN DESIGN OF ANCHORS INTO WOOD ONLY.

ALL SHIMS TO BE HIGH IMPACT, NON-METALLIC AND NON-COMPRESSIBLE.

MATERIALS INCLUDING BUT NOT LIMITED TO STEEL/METAL SCREWS, THAT COME INTO CONTACT WITH OTHER DISSIMILAR MATERIALS SHALL MEET THE REQUIREMENTS OF THE 2020/2023 FLORIDA BLDG. CODE & ADOPTED STANDARDS.

THIS PRODUCT APPROVAL IS GENERIC AND DOES NOT PROVIDE INFORMATION FOR A SITE SPECIFIC PROJECT, i.e. LIFE SAFETY OF THIS PRODUCT, ADEQUACY OF STRUCTURE RECEIVING THIS PRODUCT AND SEALING AROUND OPENING FOR WATER INFILTRATION RESISTANCE ETC.

CONDITIONS NOT SHOWN IN THIS DRAWING ARE TO BE ANALYZED SEPARATELY, AND TO BE REVIEWED BY BUILDING OFFICIAL.

DESIGN LOADS SHOWN ARE BASED ON 'ALLOWABLE STRESS DESIGN (ASD)'.
MANUFACTURER'S LABEL SHALL BE LOCATED ON A READILY VISIBLE LOCATION IN ACCORDANCE WITH SECTION 1709.9.3 OF FLORIDA BUILDING CODE. LABELING TO COMPLY WITH SECTION 1709.9.2.

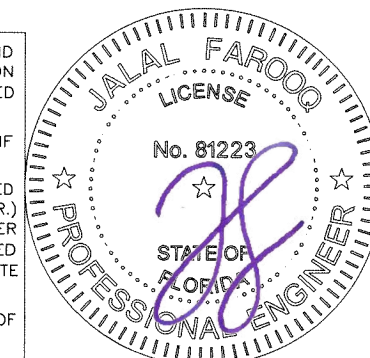
DOORS NOT APPROVED FOR INSTALLATIONS WHERE WATER INFILTRATION RESISTANCE IS REQUIRED.

DOORS NOT APPROVED FOR INSTALLATIONS WHERE WATER INFILTRATION RESISTANCE IS REQUIRED.

Sealed: 7/25/2023

FL #33688

A- CONTRACTOR TO BE RESPONSIBLE FOR THE SELECTION, PURCHASE AND INSTALLATION OF THIS PRODUCT BASED ON THIS PRODUCT EVALUATION PROVIDED HE/SHE DOES NOT DEVIATE FROM THE CONDITIONS DETAILED ON THIS DOCUMENT.
B- THIS PRODUCT EVALUATION DOCUMENT WILL BE CONSIDERED INVALID IF ALTERED BY ANY MEANS.
C- SITE SPECIFIC PROJECTS SHALL BE PREPARED BY A FLORIDA REGISTERED ENGINEER OR ARCHITECT WHICH WILL BECOME THE ENGINEER OF RECORD (E.O.R.) FOR THE PROJECT AND WHO WILL BE RESPONSIBLE FOR THE PROPER USE OF THE P.E.D. ENGINEER OF RECORD, ACTING AS A DELEGATED ENGINEER TO THE P.E.D. ENGINEER SHALL SUBMIT TO THIS LATTER THE SITE SPECIFIC DRAWINGS FOR REVIEW.
D- THIS P.E.D. SHALL BEAR THE DATE AND ORIGINAL SEAL AND SIGNATURE OF THE PROFESSIONAL ENGINEER OF RECORD THAT PREPARED IT.



afc

AL-FAROOQ CORPORATION
ENGINEERS & PRODUCT DEVELOPMENT
9360 SUNSET DRIVE, SUITE 220
MIAMI, FLORIDA 33173 (C.A.N. 3538)
TEL. (305) 264-8100 FAX. (305) 262-6978
COMP-ANL \ W16-09SIW

Coastline Outswing/Inswing Pivot Door IZ4

MARVIN

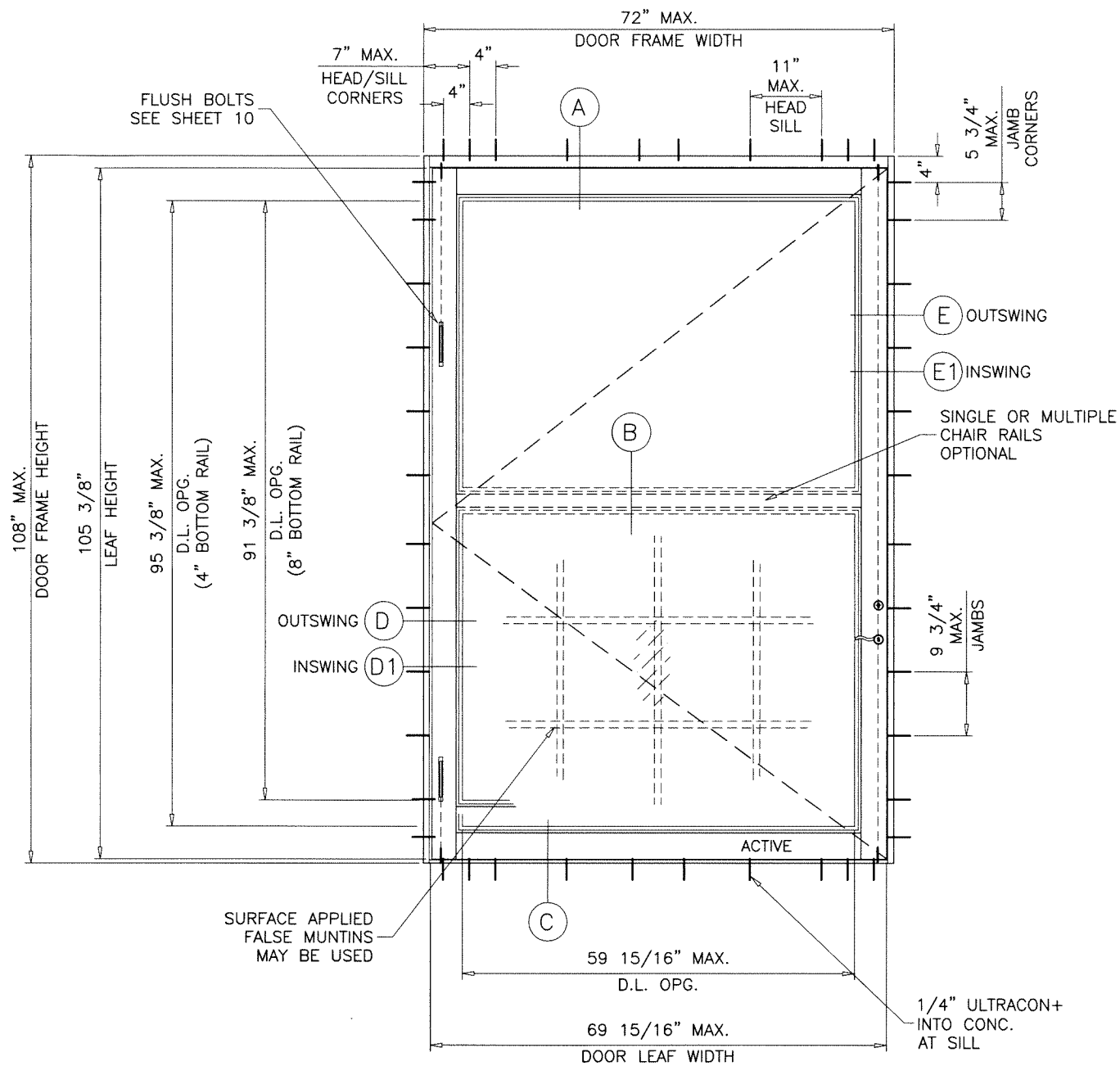
PO Box 100, 401 State Ave. N.
Warroad, MN. 56763
Tel. (218) 386-1430 Ext. 2143

no	date	by	description
A	11.08.17		UPDATED TO 2017 FBC
B	12.05.18		COMPANY NAME REV.
C	09.02.20		UPDATED TO 2020 FBC
D	07.25.23		UPDATED TO 2023 FBC

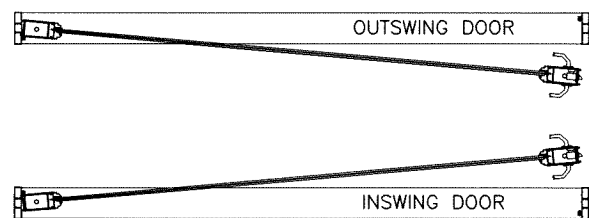
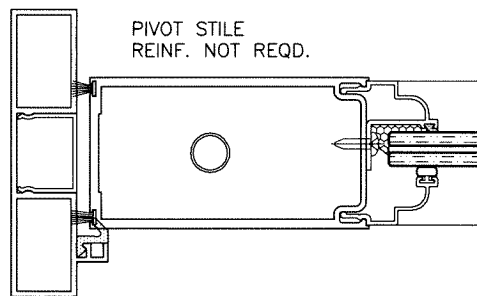
date: 02-01-16
scale: 1/2"=1'-0"
dr. by: TARIQ
chk. by:

drawing no.
W16-09

sheet 1 of 11



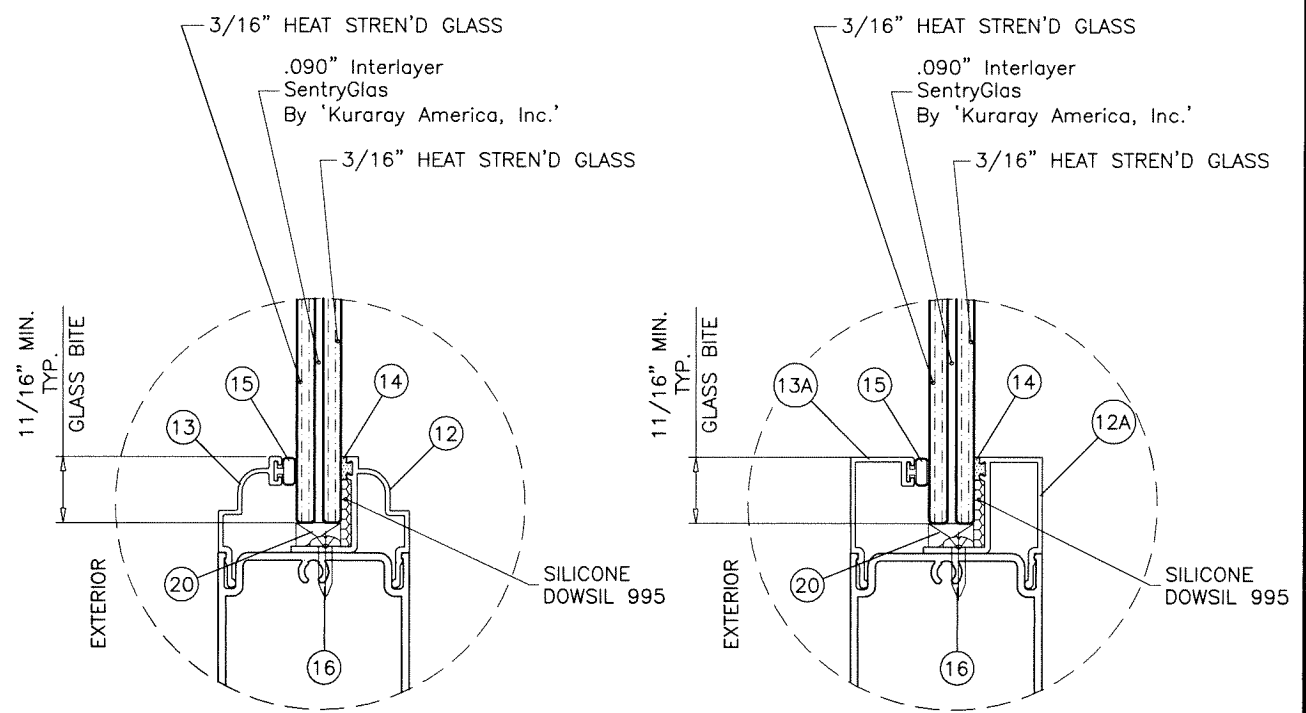
TYPICAL ELEVATION



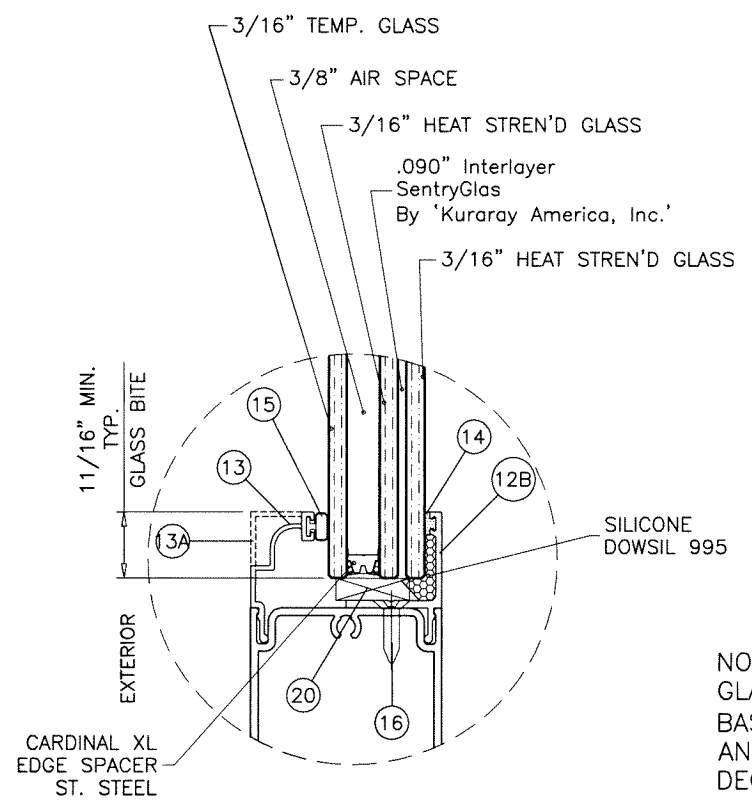
MAXIMUM DESIGN LOAD RATING = + 50.0 PSF
 (FOR MAX. SIZE SHOWN ABOVE OR SMALLER) - 50.0 PSF
 AS PERMITTED BY FBC REQUIREMENTS

NOTE:
 APPLICABLE EGRESS REQUIREMENTS TO BE REVIEWED BY AHJ.

GLASS D.L.O. FORMULAE:
 D.L.O. WIDTH = FRAME WIDTH - 12.0625"
 D.L.O. HEIGHT = FRAME HEIGHT - 12.625" (4" BOTTOM RAIL)
 = FRAME HEIGHT - 16.625" (8" BOTTOM RAIL)

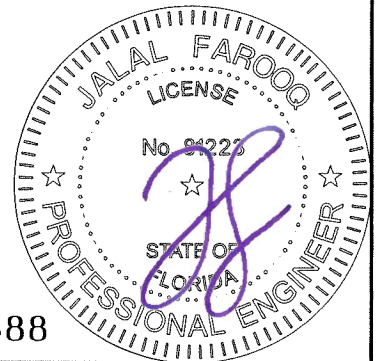


GLAZING DETAILS
 7/16" OVERALL LAM. GLASS



GLAZING DETAIL
 1" OVERALL INSUL. LAM. GLASS

NOTE:
 GLASS CAPACITIES ON THIS SHEET ARE
 BASED ON ASTM E1300-09 (3 SEC. GUSTS)
 AND FLORIDA BUILDING COMMISSION
 DECLARATORY STATEMENT DCA05-DEC-219



Sealed: 7/25/2023

FL #33688

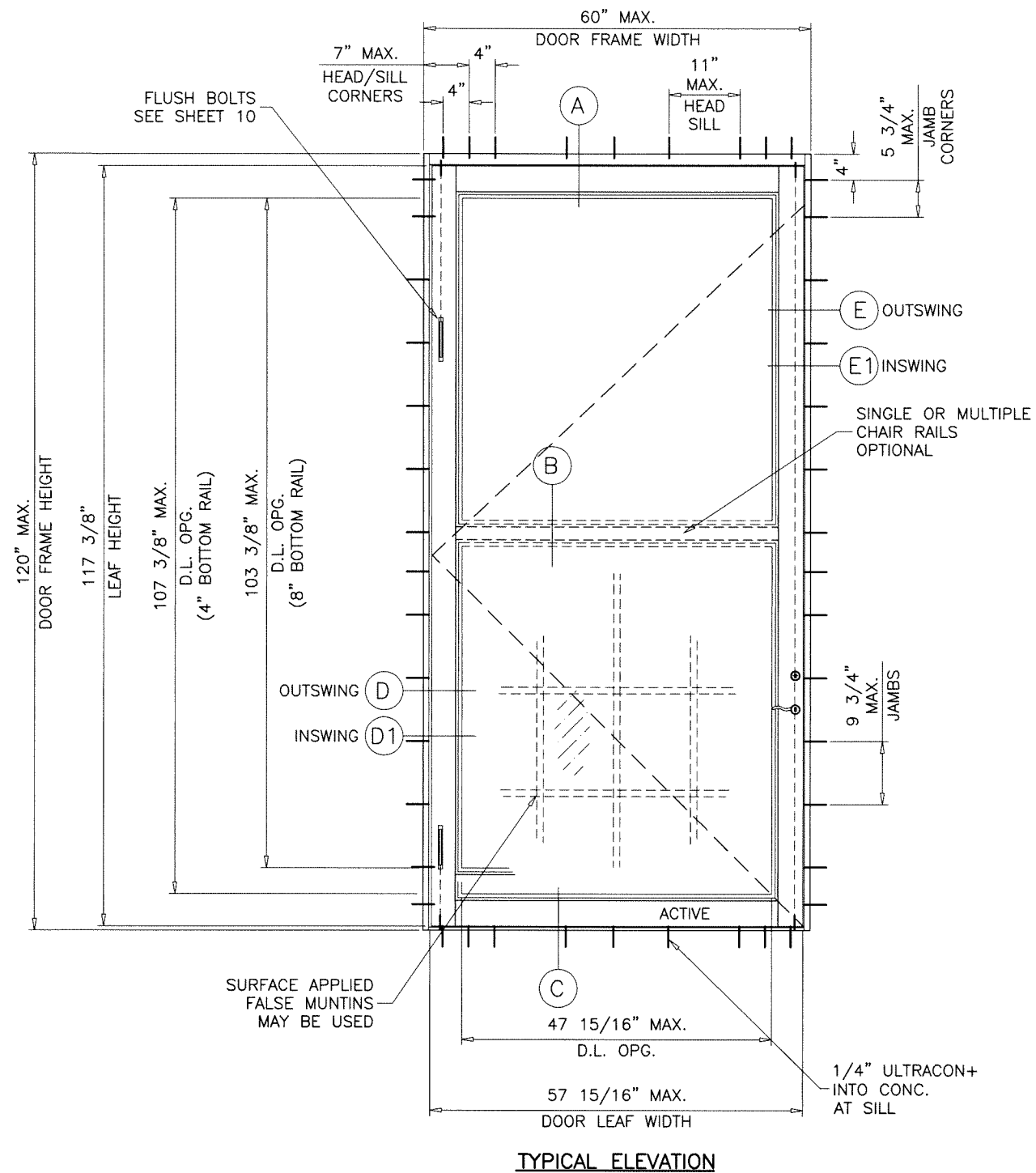
AL-FAROOQ CORPORATION
 ENGINEERS & PRODUCT DEVELOPMENT
 9360 SUNSET DRIVE, SUITE 220
 MIAMI, FLORIDA 33173 (C.A.N. 3538)
 TEL. (305) 264-8100 FAX. (305) 262-6978
 COMP-ANL W16-09SIW

Coastline Outswing/Inswing Pivot Door IZ4
MARVIN
 PO Box 100, 401 State Ave. N.
 Warrroad, MN. 56763
 Tel. (218) 386-1430 Ext. 2143

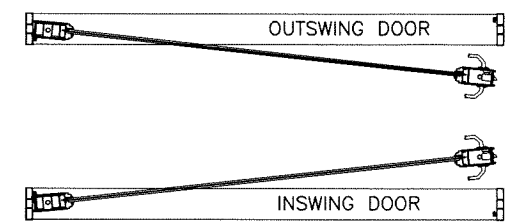
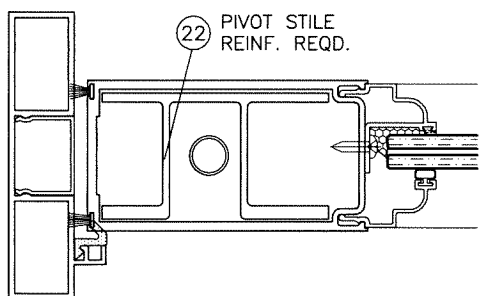
revisions:	no	date	by	description

date: 02-01-16
 scale: 1/2" = 1'-0"
 dr. by: TARIQ
 chk. by:

drawing no.
W16-09
 sheet 2 of 11

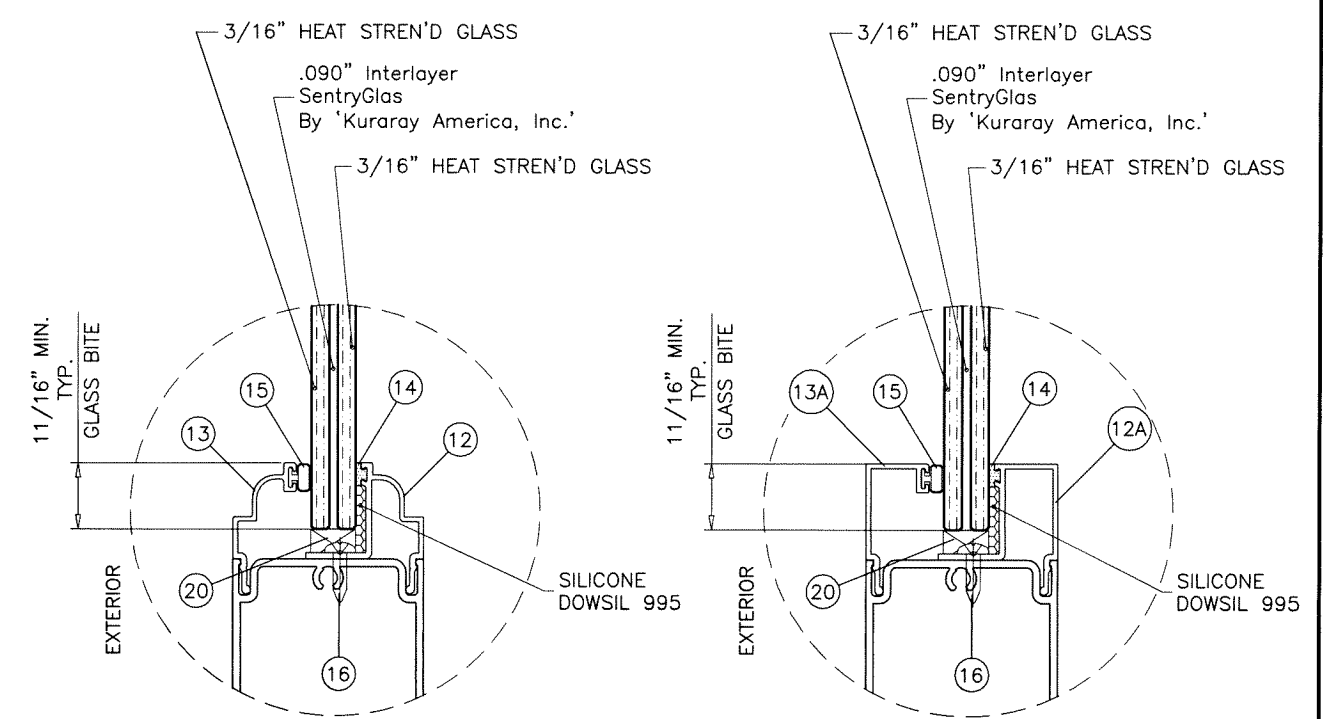


TYPICAL ELEVATION

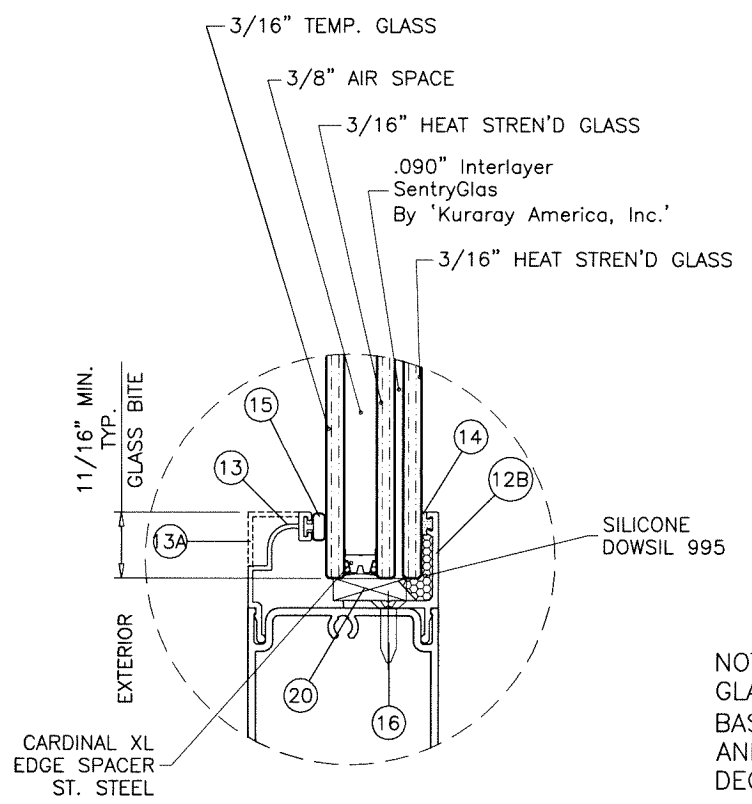


MAXIMUM DESIGN LOAD RATING = + 50.0 PSF
 (FOR MAX. SIZE SHOWN ABOVE OR SMALLER) - 50.0 PSF
 AS PERMITTED BY FBC REQUIREMENTS

NOTE:
 APPLICABLE EGRESS REQUIREMENTS TO BE REVIEWED BY AHJ.



GLAZING DETAILS
 7/16" OVERALL LAM. GLASS



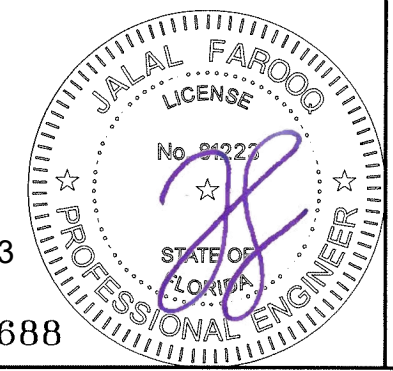
GLAZING DETAIL
 1" OVERALL INSUL. LAM. GLASS

NOTE:
 GLASS CAPACITIES ON THIS SHEET ARE
 BASED ON ASTM E1300-09 (3 SEC. GUSTS)
 AND FLORIDA BUILDING COMMISSION
 DECLARATORY STATEMENT DCA05-DEC-219

GLASS D.L.O. FORMULAE:
 D.L.O. WIDTH = FRAME WIDTH - 12.0625"
 D.L.O. HEIGHT = FRAME HEIGHT - 12.625" (4" BOTTOM RAIL)
 = FRAME HEIGHT - 16.625" (8" BOTTOM RAIL)

Sealed: 7/25/2023

FL #33688



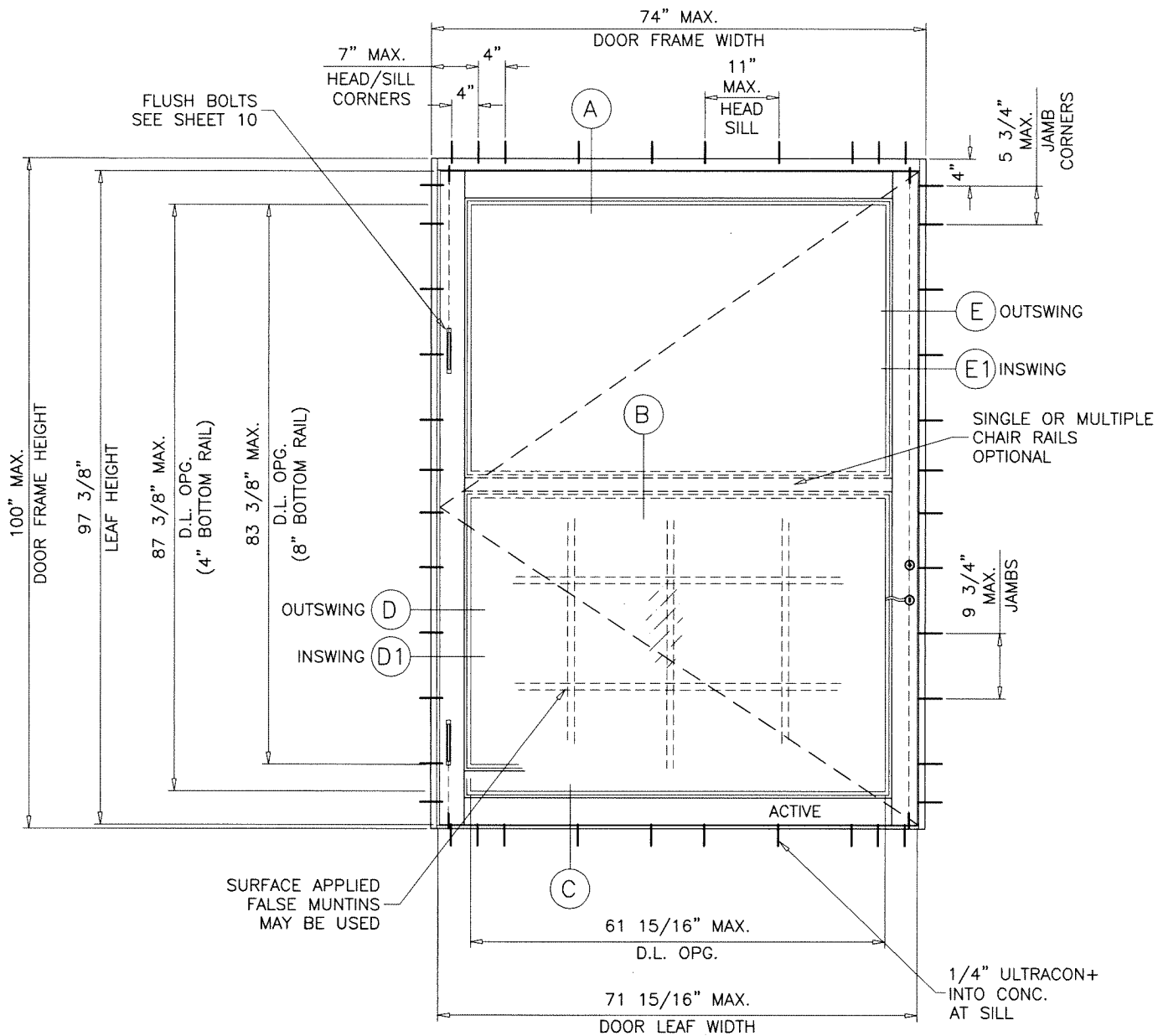
AL-FAROOQ CORPORATION
 ENGINEERS & PRODUCT DEVELOPMENT
 9360 SUNSET DRIVE, SUITE 220
 MIAMI, FLORIDA 33173 (C.A.N. 3538)
 TEL. (305) 264-8100 FAX. (305) 262-6978
 COMP-ANL W16-09SIW

Coastline Outswing/Inswing Pivot Door IZ4
MARVIN
 PO Box 100, 401 State Ave. N.
 Warroad, MN, 56763
 Tel. (218) 386-1430 Ext. 2143

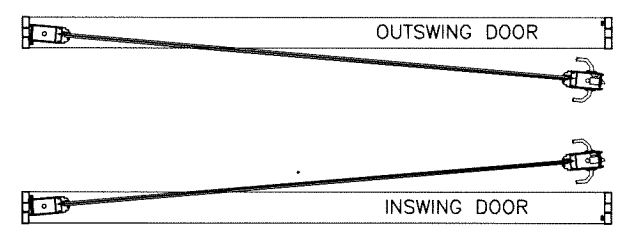
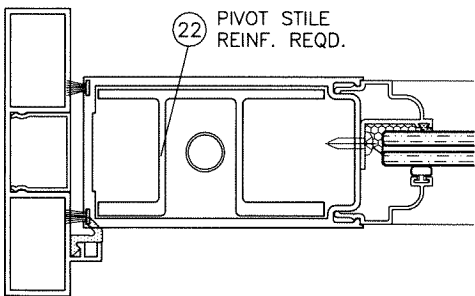
revisions:	no	date	by	description

date: 02-01-16
 scale: 1/2"=1'-0"
 dr. by: TARIQ
 chk. by:

drawing no.
W16-09
 sheet 3 of 11

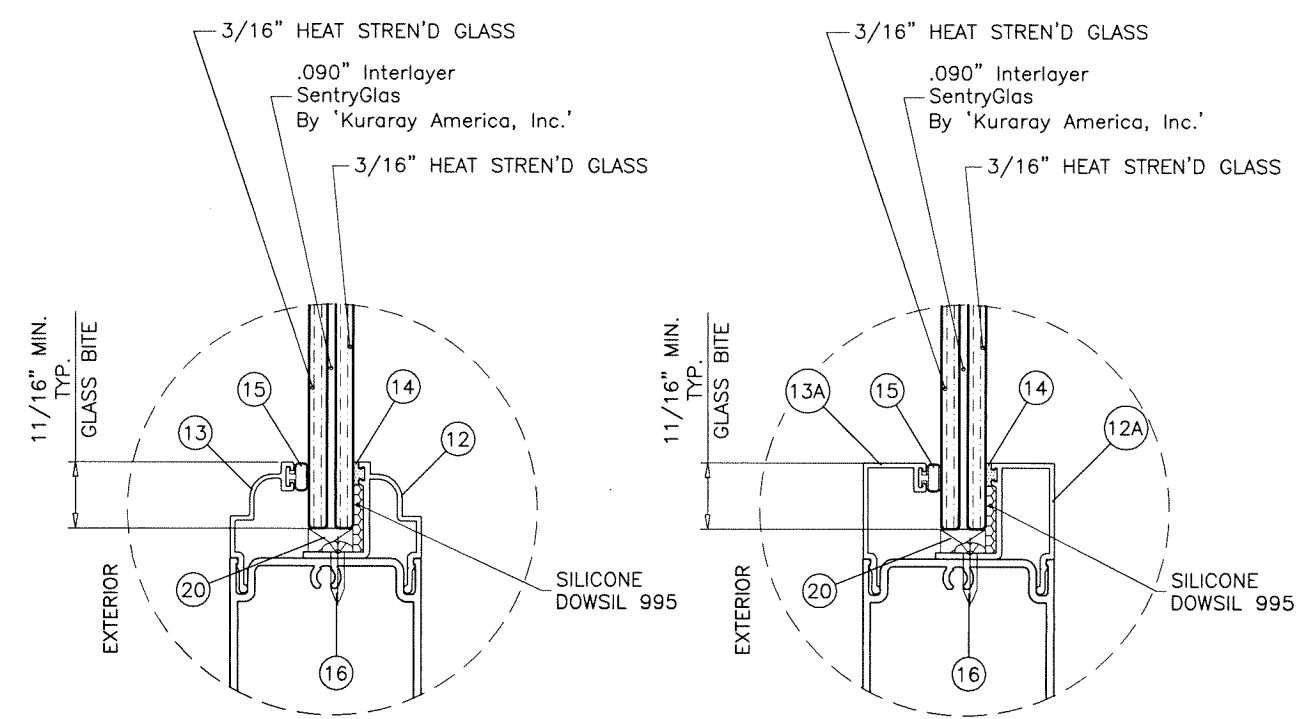


TYPICAL ELEVATION

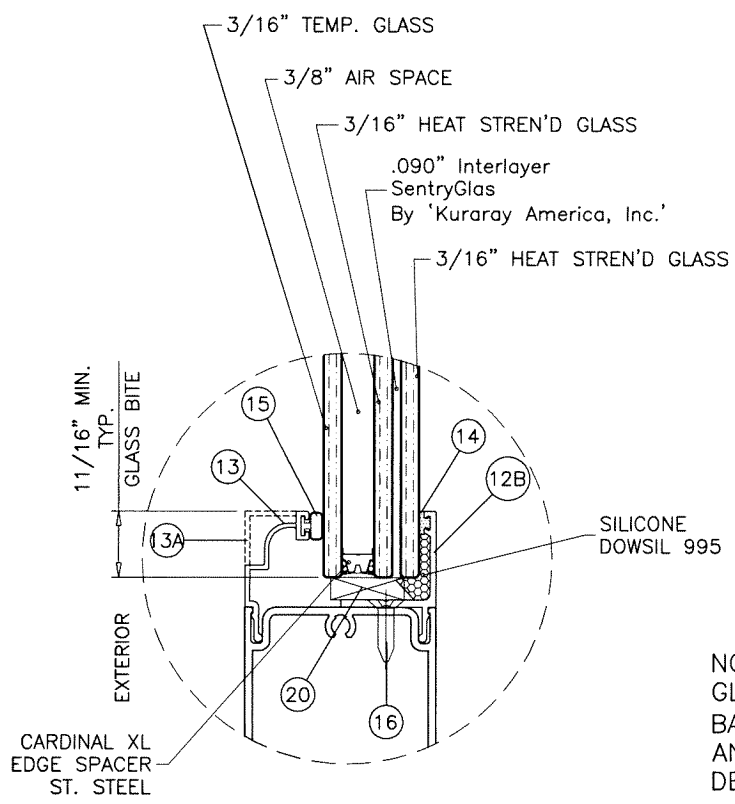


MAXIMUM DESIGN LOAD RATING = + 60.0 PSF
 (FOR MAX. SIZE SHOWN ABOVE OR SMALLER) - 60.0 PSF
 AS PERMITTED BY FBC REQUIREMENTS

NOTE:
 APPLICABLE EGRESS REQUIREMENTS TO BE REVIEWED BY AHJ.



GLAZING DETAILS
 7/16\"/>



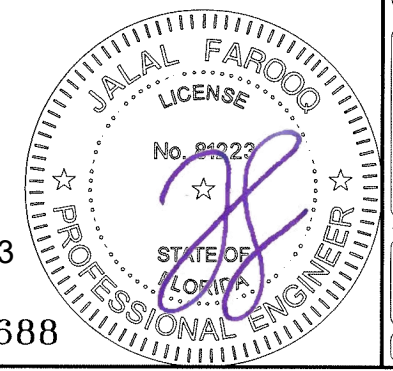
GLAZING DETAIL
 1\"/>

NOTE:
 GLASS CAPACITIES ON THIS SHEET ARE
 BASED ON ASTM E1300-09 (3 SEC. GUSTS)
 AND FLORIDA BUILDING COMMISSION
 DECLARATORY STATEMENT DCA05-DEC-219

GLASS D.L.O. FORMULAE:
 D.L.O. WIDTH = FRAME WIDTH - 12.0625"
 D.L.O. HEIGHT = FRAME HEIGHT - 12.625" (4\"/>

Sealed: 7/25/2023

FL #33688



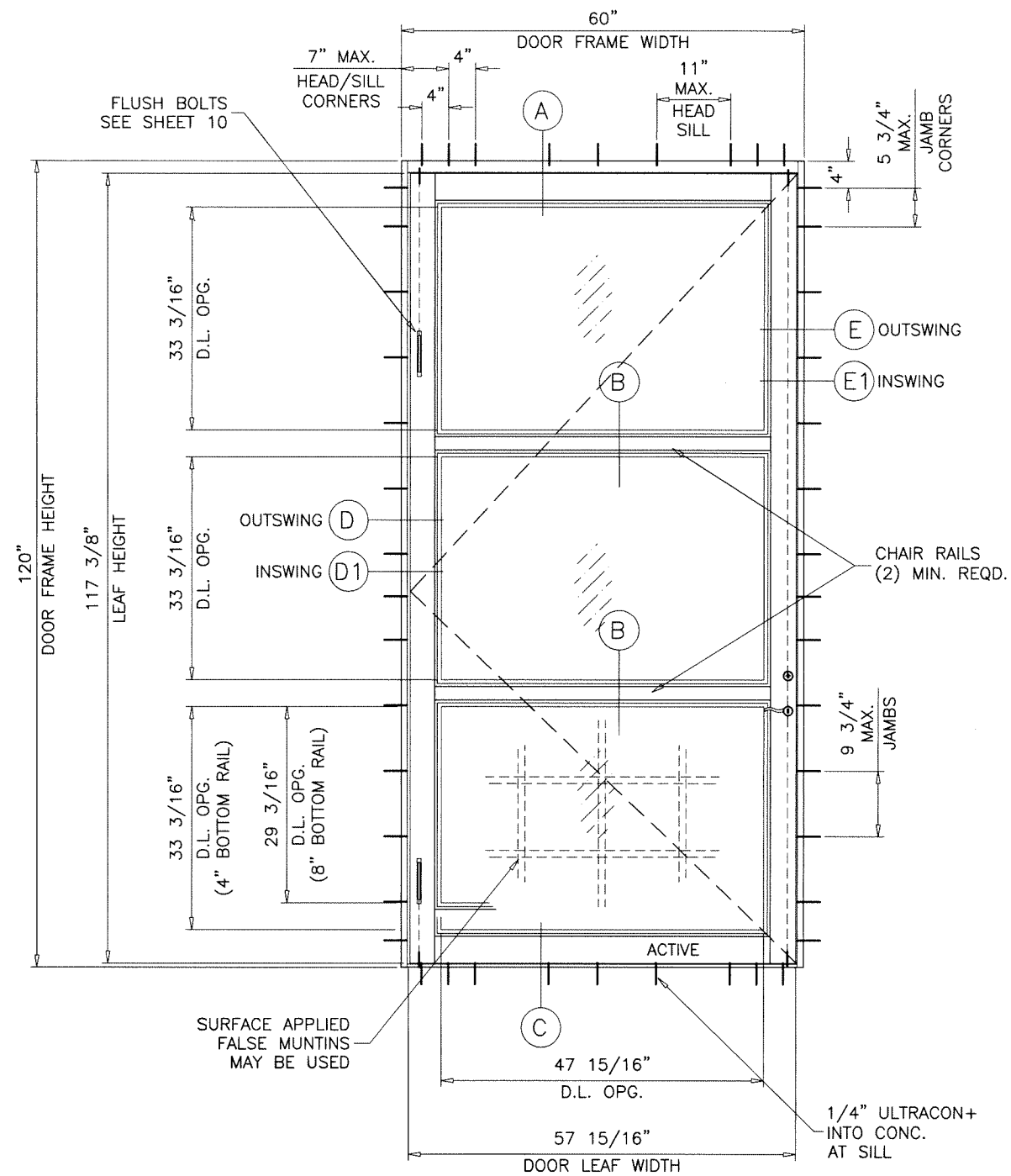
af c
AL-FAROOQ CORPORATION
 ENGINEERS & PRODUCT DEVELOPMENT
 9360 SUNSET DRIVE, SUITE 220 (C.A.N. 3538)
 MIAMI, FLORIDA 33173 TEL. (305) 264-8100 FAX. (305) 262-6978
 COMP-ANL W16-09SIW

Coastline Outswing/Inswing Pivot Door IZ4
MARVIN
 PO Box 100, 401 State Ave. N.
 Warrador, MN. 56763
 Tel. (218) 386-1430 Ext. 2143

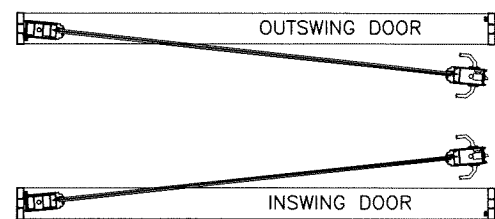
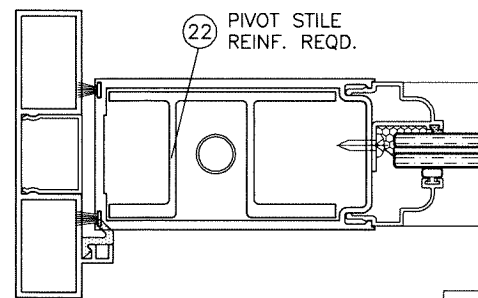
revisions:	no	date	description

date: 02-01-16
 scale: 1/2"=1'-0"
 dr. by: TARIQ
 chk. by:

drawing no.
W16-09
 sheet 4 of 11

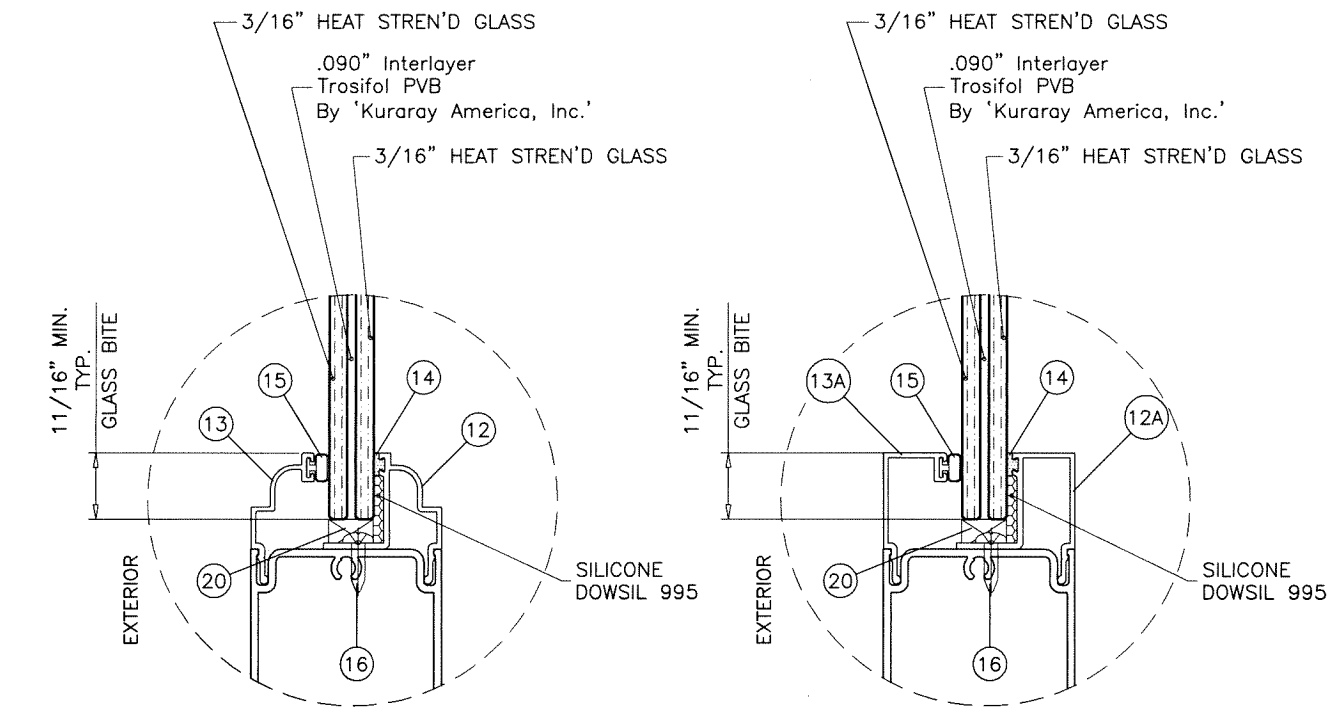


TYPICAL ELEVATION

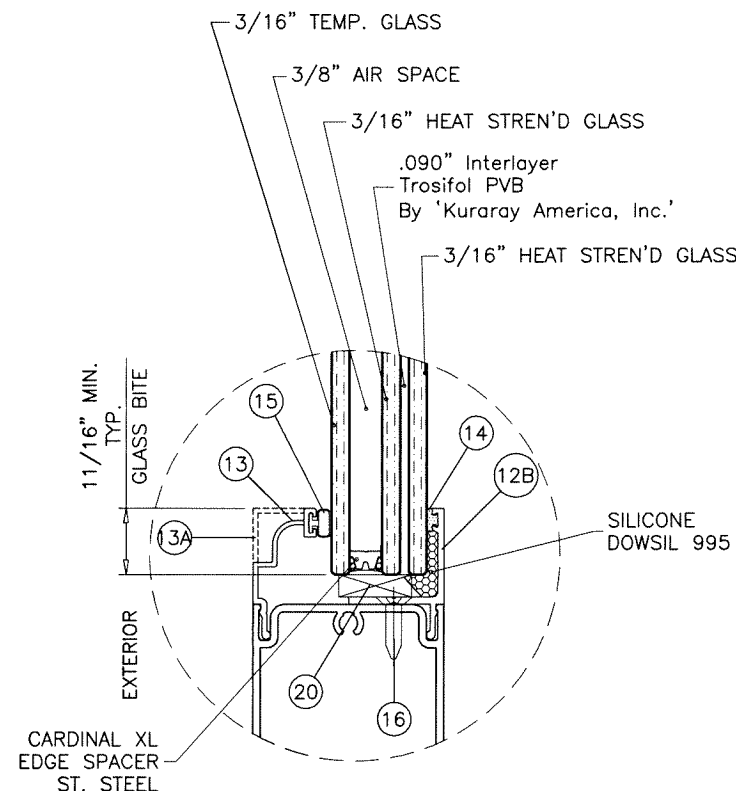


MAXIMUM DESIGN LOAD RATING = + 50.0 PSF
 (FOR MAX. SIZE SHOWN ABOVE OR SMALLER) - 50.0 PSF
 AS PERMITTED BY FBC REQUIREMENTS

NOTE:
 APPLICABLE EGRESS REQUIREMENTS TO BE REVIEWED BY AHJ.

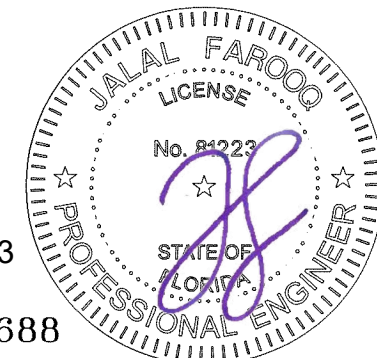


GLAZING DETAILS
 7/16" OVERALL LAM. GLASS



GLAZING DETAIL
 1" OVERALL INSUL. LAM. GLASS

NOTE:
 GLASS CAPACITIES ON THIS SHEET ARE
 BASED ON ASTM E1300-09 (3 SEC. GUSTS)
 AND FLORIDA BUILDING COMMISSION
 DECLARATORY STATEMENT DCA05-DEC-219



Sealed: 7/25/2023

FL #33688

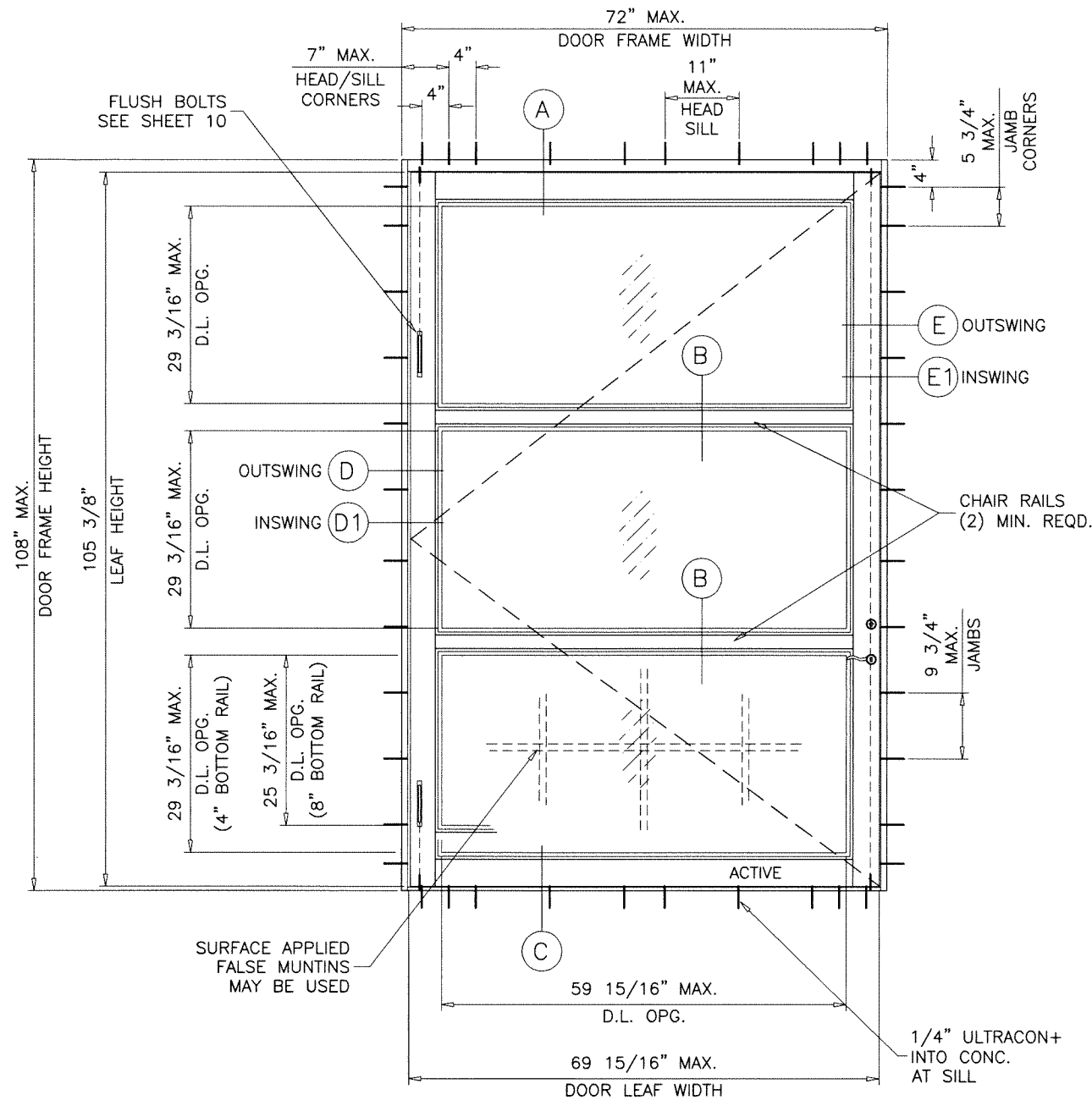
af c
AL-FAROOQ CORPORATION
 ENGINEERS & PRODUCT DEVELOPMENT
 9360 SUNSET DRIVE, SUITE 220 (C.A.N. 3538)
 MIAMI, FLORIDA 33173 TEL. (305) 262-6978
 TEL. (305) 264-8100 FAX. (305) 262-6978
 COMP-ANL\W16-09SIW

Coastline Outswing/Inswing Pivot Door IZ4
MARVIN
 PO Box 100, 401 State Ave. N.
 Warroad, MN, 56763
 Tel. (218) 386-1430 Ext. 2143

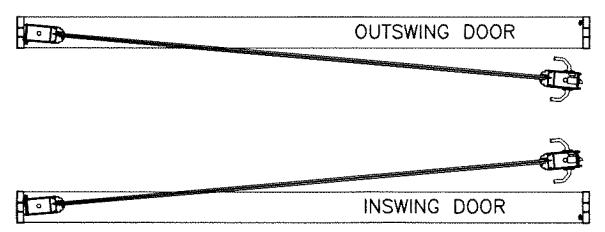
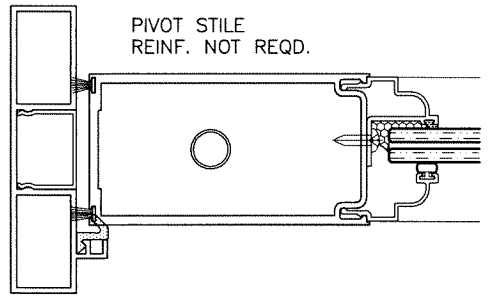
no.	date	description

date: 02-01-16
 scale: 1/2"=1'-0"
 dr. by: TARIQ
 chk. by:

drawing no.
W16-09
 sheet 5 of 11

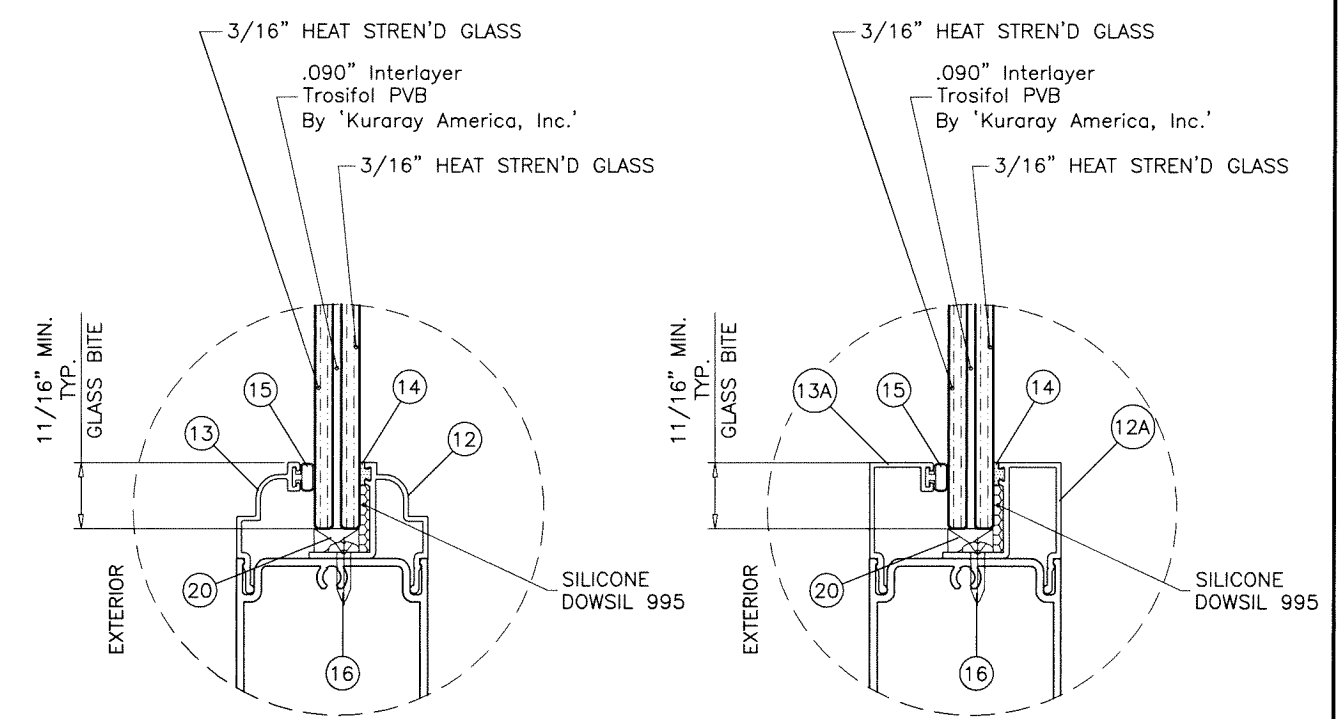


TYPICAL ELEVATION

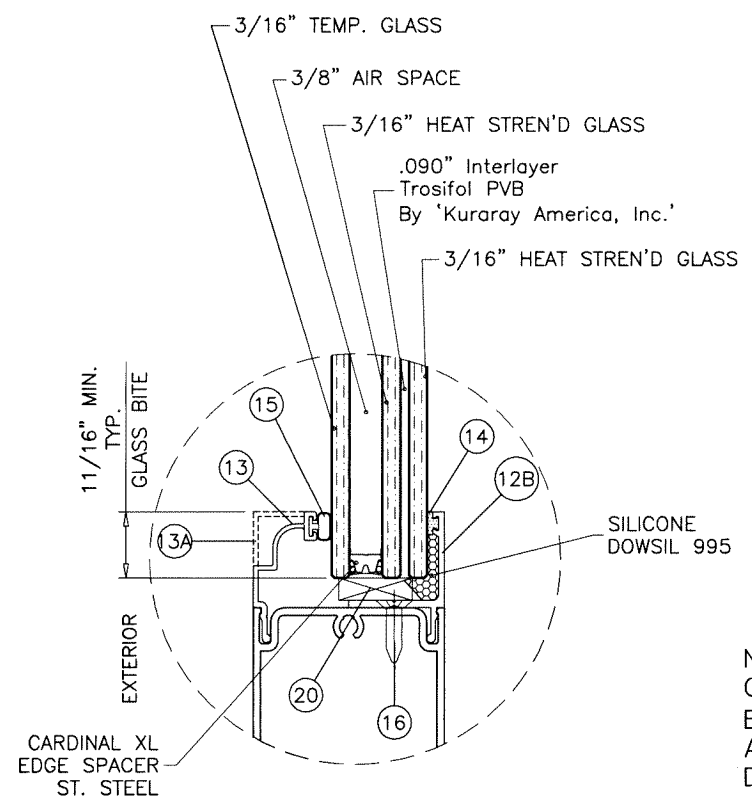


MAXIMUM DESIGN LOAD RATING = + 50.0 PSF
 (FOR MAX. SIZE SHOWN ABOVE OR SMALLER) - 50.0 PSF
 AS PERMITTED BY FBC REQUIREMENTS

NOTE:
 APPLICABLE EGRESS REQUIREMENTS TO BE REVIEWED BY AHJ.

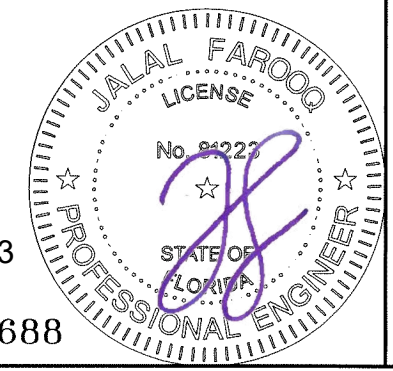


GLAZING DETAILS
 7/16" OVERALL LAM. GLASS



GLAZING DETAIL
 1" OVERALL INSUL. LAM. GLASS

NOTE:
 GLASS CAPACITIES ON THIS SHEET ARE BASED ON ASTM E1300-09 (3 SEC. GUSTS) AND FLORIDA BUILDING COMMISSION DECLARATORY STATEMENT DCA05-DEC-219



Sealed: 7/25/2023

FL #33688

af c
AL-FAROOQ CORPORATION
 ENGINEERS & PRODUCT DEVELOPMENT
 9360 SUNSET DRIVE, SUITE 220 (C.A.N. 3538)
 MIAMI, FLORIDA 33173 TEL. (305) 264-8100 FAX. (305) 262-6978
 COMP-ANL W16-09SIW

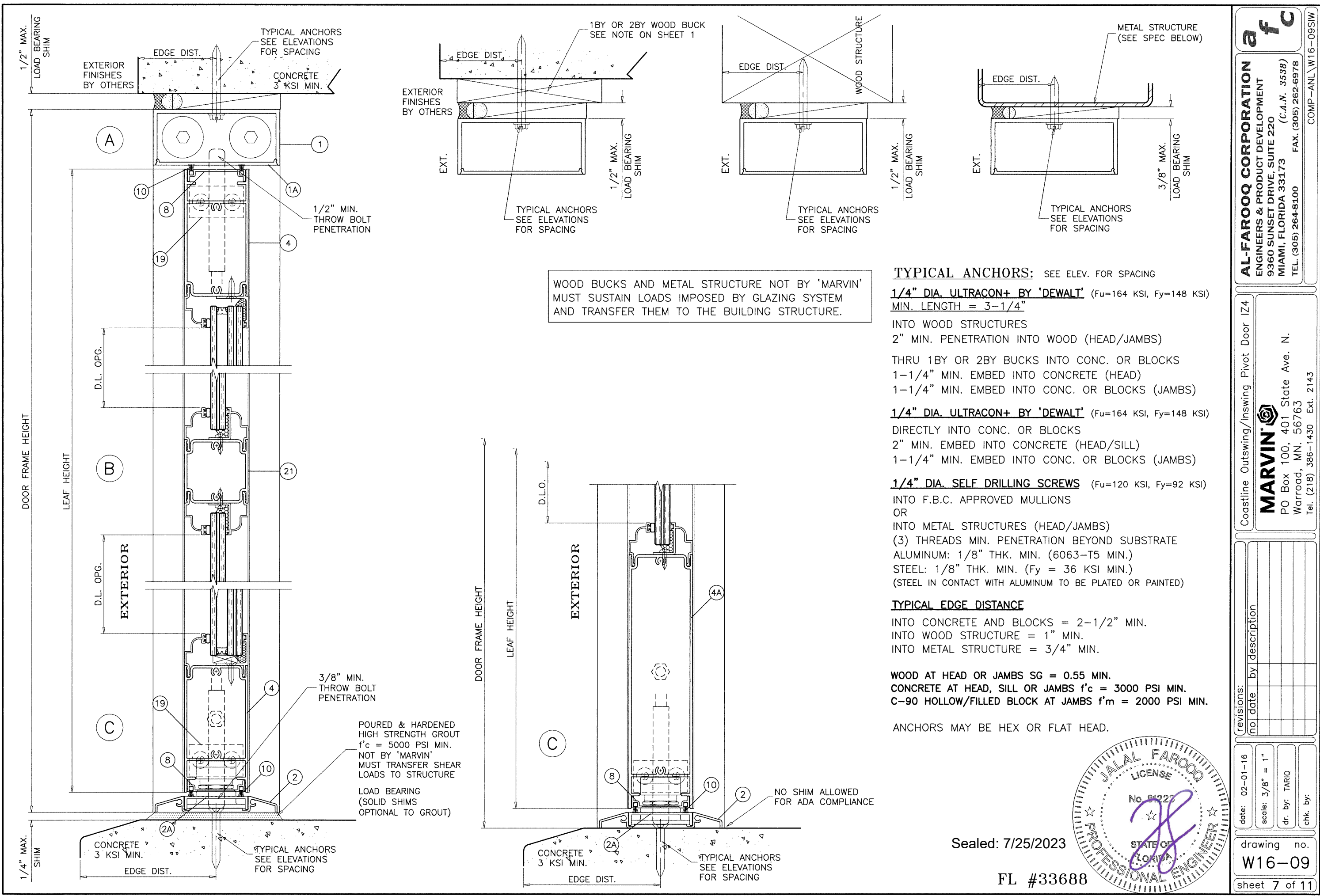
Coastline Outswing/Inswing Pivot Door IZ4

MARVIN
 PO Box 100, 401 State Ave. N.
 Warrroad, MN, 56763
 Tel. (218) 386-1430 Ext. 2143

no.	date	description

date: 02-01-16
 scale: 1/2"=1'-0"
 dr. by: TARIQ
 chk. by:

drawing no.
W16-09
 sheet 6 of 11



WOOD BUCKS AND METAL STRUCTURE NOT BY 'MARVIN' MUST SUSTAIN LOADS IMPOSED BY GLAZING SYSTEM AND TRANSFER THEM TO THE BUILDING STRUCTURE.

TYPICAL ANCHORS: SEE ELEV. FOR SPACING
1/4" DIA. ULTRACON+ BY 'DEWALT' (Fu=164 KSI, Fy=148 KSI)
 MIN. LENGTH = 3-1/4"

INTO WOOD STRUCTURES
 2" MIN. PENETRATION INTO WOOD (HEAD/JAMBS)
 THRU 1BY OR 2BY BUCKS INTO CONC. OR BLOCKS
 1-1/4" MIN. EMBED INTO CONCRETE (HEAD)
 1-1/4" MIN. EMBED INTO CONC. OR BLOCKS (JAMBS)

1/4" DIA. ULTRACON+ BY 'DEWALT' (Fu=164 KSI, Fy=148 KSI)
 DIRECTLY INTO CONC. OR BLOCKS
 2" MIN. EMBED INTO CONCRETE (HEAD/SILL)
 1-1/4" MIN. EMBED INTO CONC. OR BLOCKS (JAMBS)

1/4" DIA. SELF DRILLING SCREWS (Fu=120 KSI, Fy=92 KSI)
 INTO F.B.C. APPROVED MULLIONS
 OR
 INTO METAL STRUCTURES (HEAD/JAMBS)
 (3) THREADS MIN. PENETRATION BEYOND SUBSTRATE
 ALUMINUM: 1/8" THK. MIN. (6063-T5 MIN.)
 STEEL: 1/8" THK. MIN. (Fy = 36 KSI MIN.)
 (STEEL IN CONTACT WITH ALUMINUM TO BE PLATED OR PAINTED)

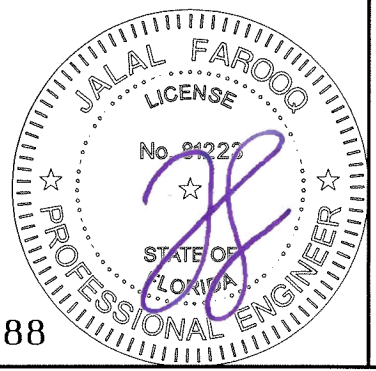
TYPICAL EDGE DISTANCE
 INTO CONCRETE AND BLOCKS = 2-1/2" MIN.
 INTO WOOD STRUCTURE = 1" MIN.
 INTO METAL STRUCTURE = 3/4" MIN.

WOOD AT HEAD OR JAMBS SG = 0.55 MIN.
 CONCRETE AT HEAD, SILL OR JAMBS f'c = 3000 PSI MIN.
 C-90 HOLLOW/FILLED BLOCK AT JAMBS f'm = 2000 PSI MIN.

ANCHORS MAY BE HEX OR FLAT HEAD.

Sealed: 7/25/2023

FL #33688



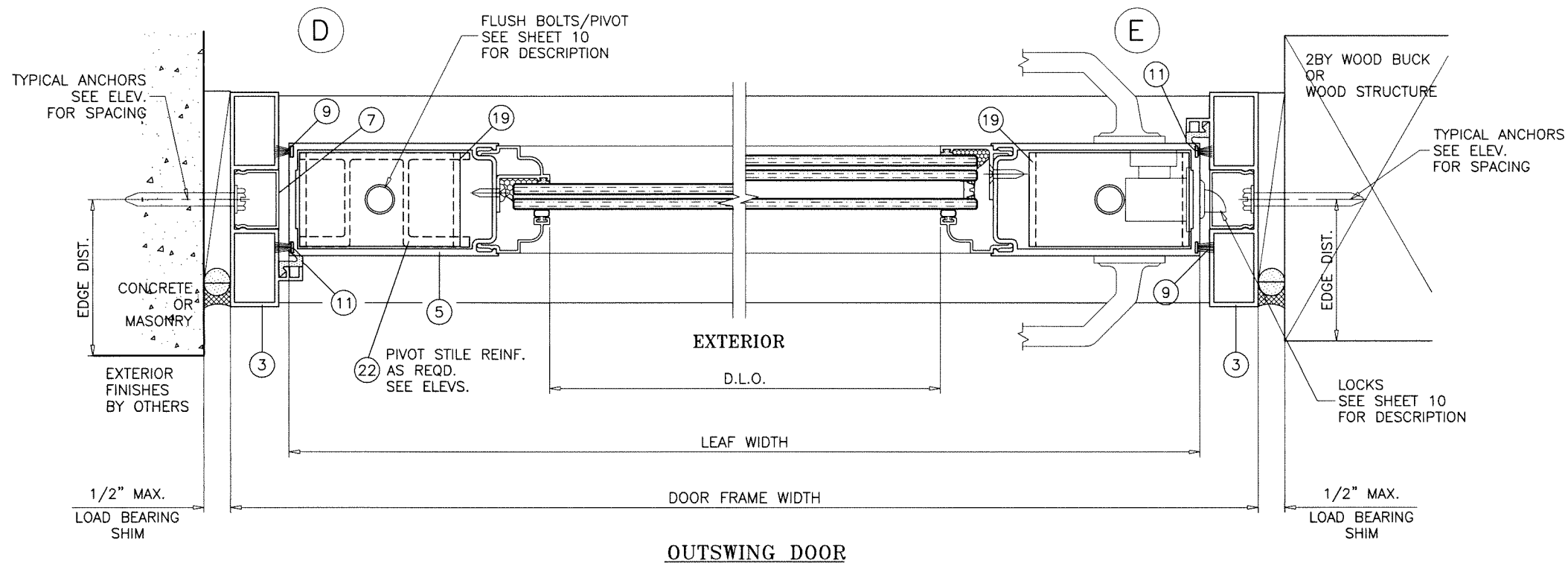
af c
AL-FAROOQ CORPORATION
 ENGINEERS & PRODUCT DEVELOPMENT
 9360 SUNSET DRIVE, SUITE 220
 MIAMI, FLORIDA 33173 (C.A.N. 3538)
 TEL. (305) 264-8100 FAX. (305) 262-6978
 COMP-ANL \ W16-09SIW

Coastline Outswing/Inswing Pivot Door IZ4
MARVIN
 PO Box 100, 401 State Ave. N.
 Warrroad, MN. 56763
 Tel. (218) 386-1430 Ext. 2143

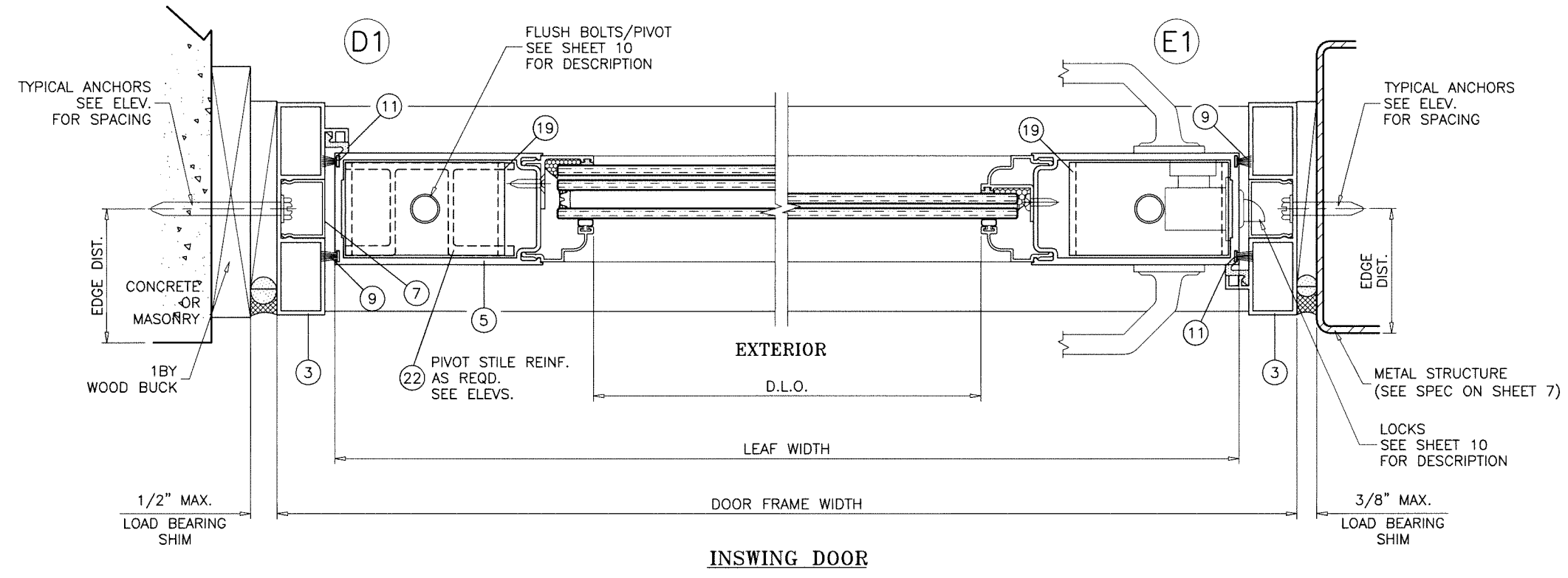
revisions:	no	date	by	description

date: 02-01-16
 scale: 3/8" = 1"
 dr. by: TARIQ
 chk. by:

drawing no.
W16-09
 sheet 7 of 11



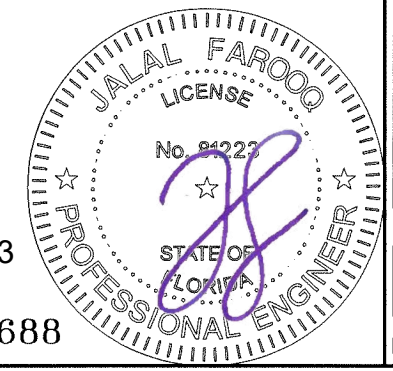
OUTSWING DOOR



INSWING DOOR

Sealed: 7/25/2023

FL #33688



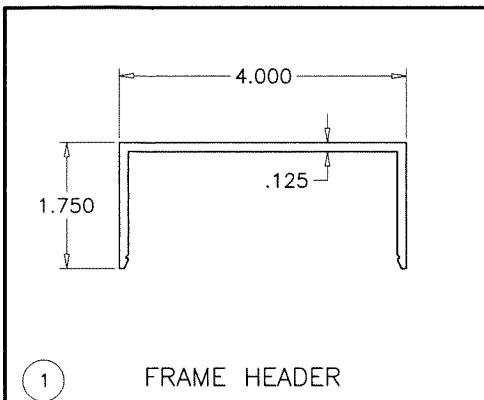
af c
AL-FAROOQ CORPORATION
 ENGINEERS & PRODUCT DEVELOPMENT
 9360 SUNSET DRIVE, SUITE 220 (C.A.N. 3538)
 MIAMI, FLORIDA 33173
 TEL. (305) 264-8100 FAX. (305) 262-6978
 COMP-ANL\W16-09SIW

Coastline Outswing/Inswing Pivot Door IZ4
MARVIN
 PO Box 100, 401 State Ave. N.
 Warrroad, MN. 56763
 Tel. (218) 386-1430 Ext. 2143

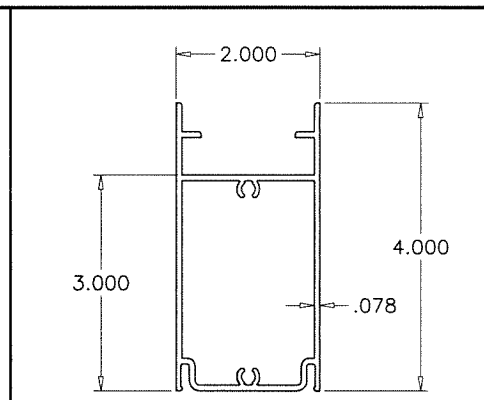
revisions:	no	date	description

date: 02-01-16
 scale: 3/8" = 1"
 dr. by: TARIQ
 chk. by:

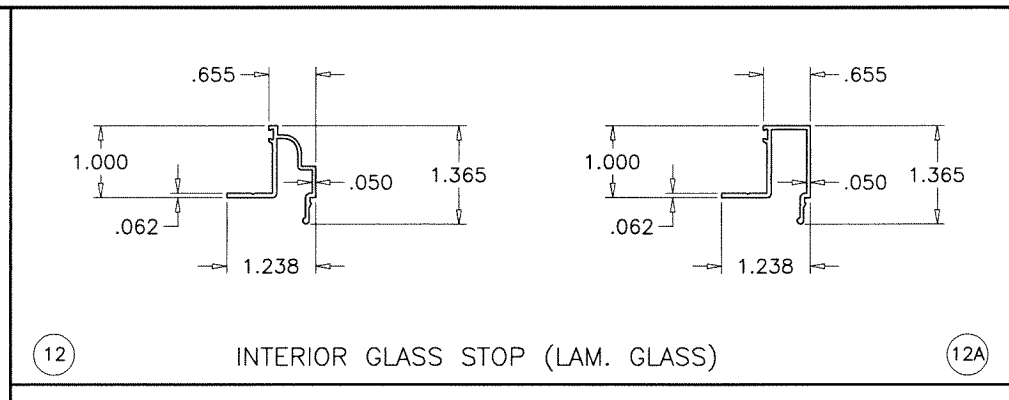
drawing no.
W16-09
 sheet 8 of 11



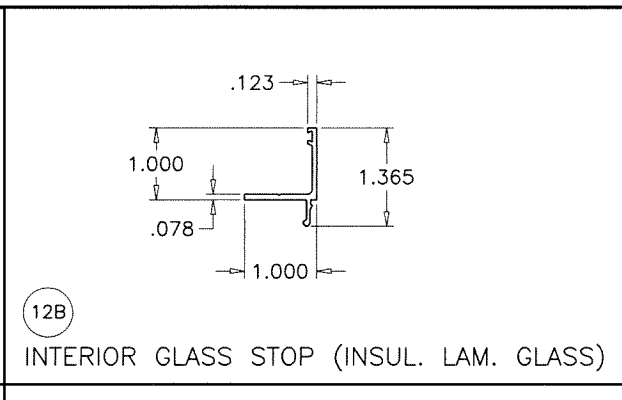
1 FRAME HEADER



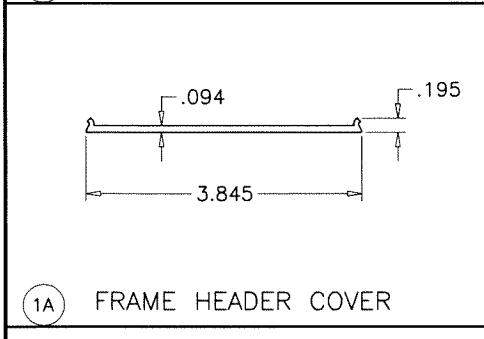
4 LEAF TOP & BOTTOM RAIL



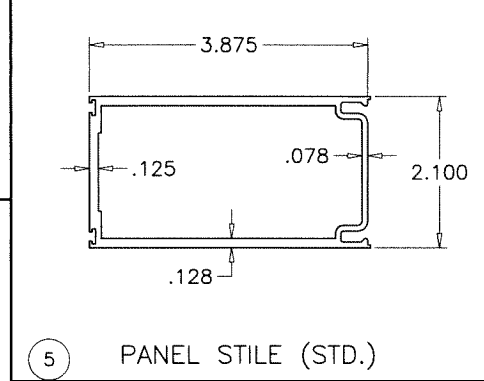
12 INTERIOR GLASS STOP (LAM. GLASS)



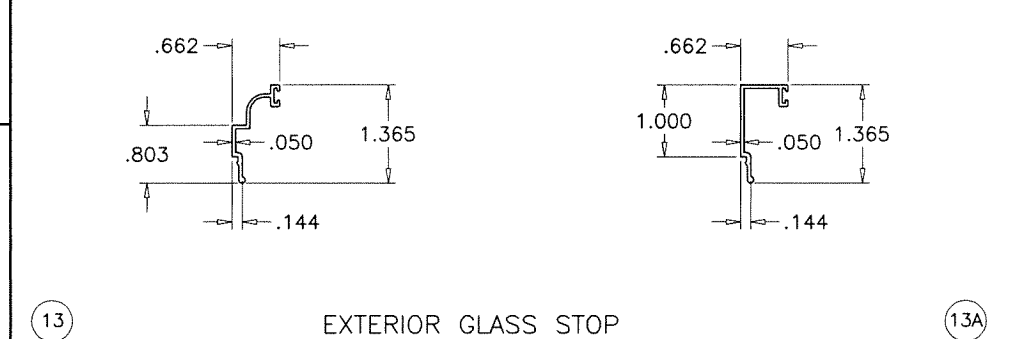
12B INTERIOR GLASS STOP (INSUL. LAM. GLASS)



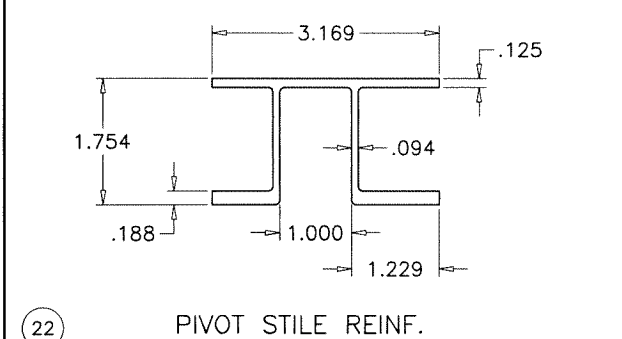
1A FRAME HEADER COVER



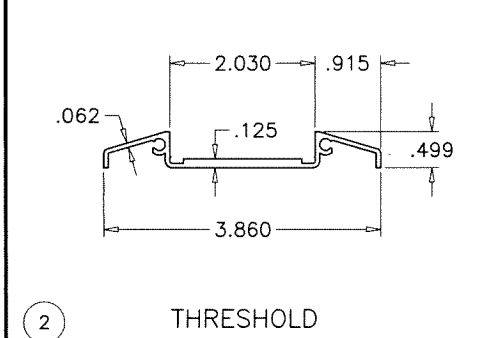
5 PANEL STILE (STD.)



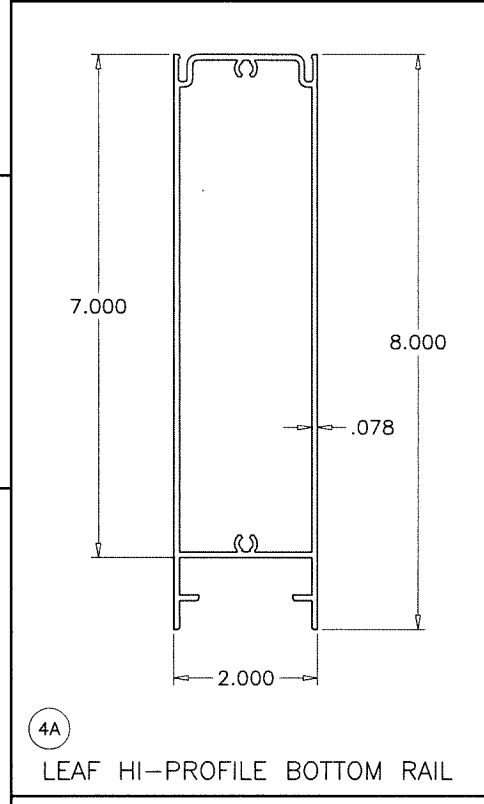
13 EXTERIOR GLASS STOP



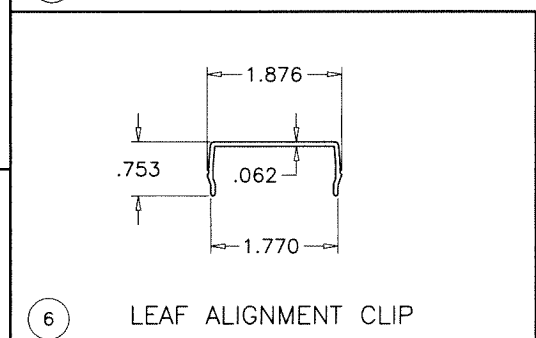
22 PIVOT STILE REINF.



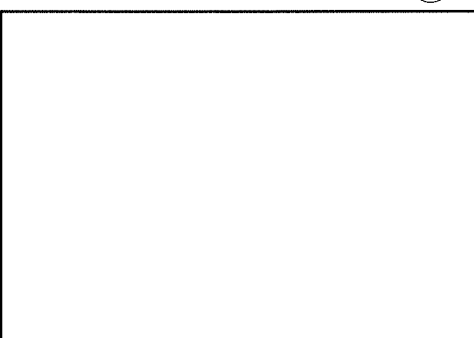
2 THRESHOLD



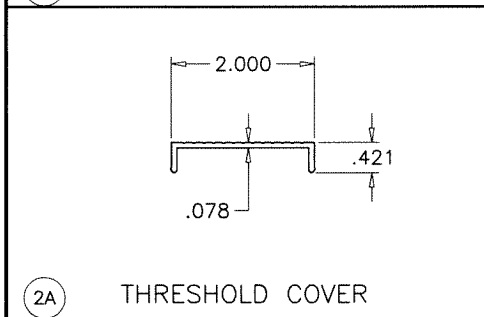
4A LEAF HI-PROFILE BOTTOM RAIL



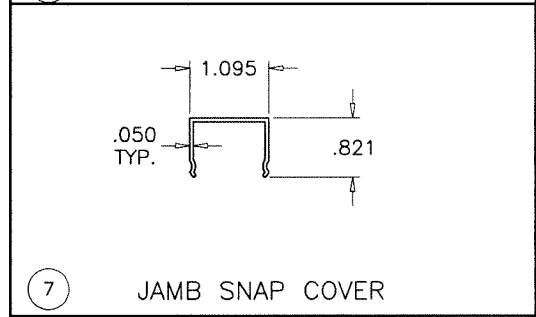
6 LEAF ALIGNMENT CLIP



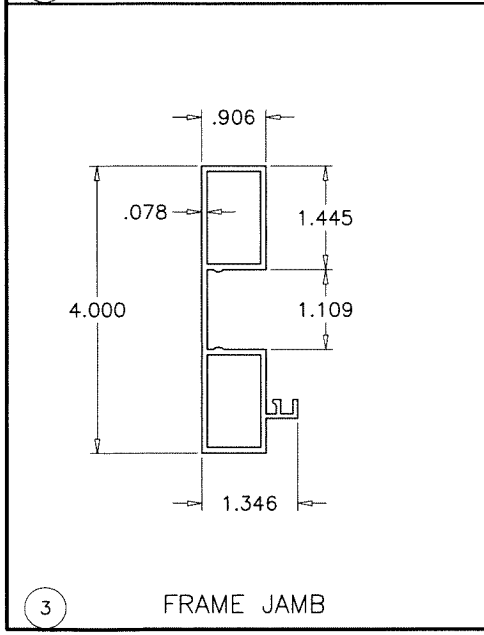
7 JAMB SNAP COVER



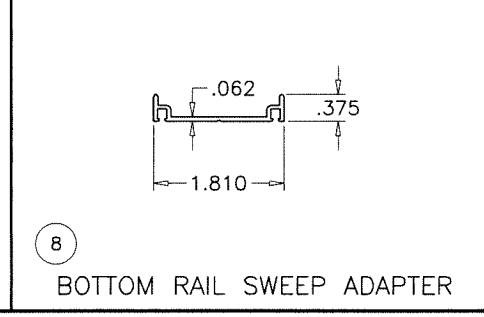
2A THRESHOLD COVER



19 FLUSH BOLT BLOCK



3 FRAME JAMB



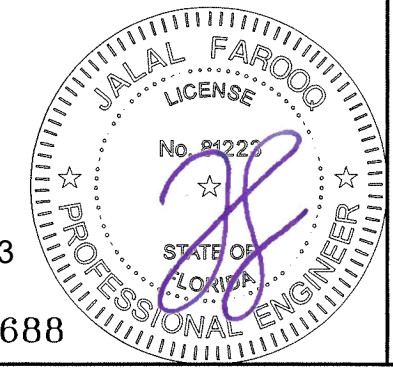
8 BOTTOM RAIL SWEEP ADAPTER



21 CHAIR RAIL

Sealed: 7/25/2023

FL #33688



af c
AL-FAROOQ CORPORATION
 ENGINEERS & PRODUCT DEVELOPMENT
 9360 SUNSET DRIVE, SUITE 220 (C.A.N. 3538)
 MIAMI, FLORIDA 33173
 TEL. (305) 264-8100 FAX. (305) 262-6978
 COMP-ANL W16-09SIW

Coastline Outswing/Inswing Pivot Door IZ4
MARVIN
 PO Box 100, 401 State Ave. N.
 Warroad, MN. 56763
 Tel. (218) 386-1430 Ext. 2143

no	date	by	description

date: 02-01-16
 scale: 3/8" = 1"
 dr. by: TARIQ
 chk. by:

drawing no.
W16-09
 sheet 9 of 11

ITEM #	PART #	REQD.	DESCRIPTION	MATERIAL	MANF./SUPPLIER/REMARKS
1	SIW901	1	FRAME HEADER	6063-T6	SIW SELECTED EXTRUDER
1A	SIW902	1	FRAME HEADER COVER	6063-T6	SIW SELECTED EXTRUDER
2	SIW904	1	THRESHOLD	6063-T6	SIW SELECTED EXTRUDER
2A	SIW905	1	THRESHOLD COVER	6063-T6	SIW SELECTED EXTRUDER
3	SIW903	2	FRAME JAMB	6063-T6	SIW SELECTED EXTRUDER
4	SIW805	2/ PANEL	LEAF TOP & BOTTOM RAIL	6063-T6	SIW SELECTED EXTRUDER
4A	SIW814	1	HI-PROFILE LEAF BOTTOM RAIL	6063-T6	SIW SELECTED EXTRUDER
5	SIW908	2/ PANEL	LEAF STILE	6063-T6	SIW SELECTED EXTRUDER
6	SIW807	AS REQD.	LEAF ALIGNMENT CLIP	6063-T6	SIW SELECTED EXTRUDER
7	SIW808	AS REQD.	JAMB SNAP COVER	6063-T6	SIW SELECTED EXTRUDER
8	SIW809	1/ PANEL	TOP & BOTTOM RAIL SWEEP ADAPTER	6063-T6	SIW SELECTED EXTRUDER
9	W23201	AS REQD.	FIN SEAL PILE W'STRIPPING	POLYPROPYLENE	ULTRAFAB
10	1104-5601-9	AS REQD.	W'STRIPPING SK560-SKIRT	POLYPROPYLENE	SCHLEGEL
11	QWS21	AS REQD.	COMPRESSION W'STRIPPING	Q-LON	SCHLEGEL
12	SIW512	AS REQD.	INTERIOR GLASS STOP (LAM. GLASS)	6063-T5	SIW SELECTED EXTRUDER
12A	SIW540	AS REQD.	INTERIOR GLASS STOP SQUARE (LAM. GLASS)	6063-T5	SIW SELECTED EXTRUDER
12B	SIW520	AS REQD.	INTERIOR GLASS STOP (INSUL. LAM. GLASS)	6063-T5	SIW SELECTED EXTRUDER
13	SIW513	AS REQD.	EXTERIOR GLASS STOP	6063-T6	SIW SELECTED EXTRUDER
13A	SIW541	AS REQD.	EXTERIOR GLASS STOP SQUARE	6063-T6	SIW SELECTED EXTRUDER
14	E20218	AS REQD.	INTERIOR GLAZING GASKET (DUROMETER 70±5)	TPE	ULTRAFAB
15	5530	AS REQD.	EXTERIOR GLAZING GASKET (DUROMETER 70±5)	SANTOPRENE	CENTRAL PLASTICS
16	#8 X 1/2"	AS REQD.	GLASS STOP SCREWS SELF DRILLING	-	AT 6" FROM ENDS & 14" O.C.
17	#12 X 1-1/2"	AS REQD.	FRAME AND LEAF ASSEMBLY SCREWS	ST. STEEL	HWH SMS
18	#12 X 1/2"	AS REQD.	FRAME ASSEMBLY SCREWS	ST. STEEL	FH MS
19	SIW521	-	FLUSH BOLT BLOCK	6063-T6	SIW SELECTED EXTRUDER
20	-	2/ LITE	SETTING BLOCKS, AT 1/4 POINTS	EPDM	DUROMETER 85±5 SHORE A
21	SIW816	AS REQD.	CHAIR RAIL	6063-T6	SIW SELECTED EXTRUDER
22	SIW906	AS REQD.	PIVOT STILE REINFORCING	6063-T6	SIW SELECTED EXTRUDER

DOOR HARDWARE

3 POINT LOCKS AT LOCK STILE

OPTION #1

3 POINT SENTINEL LOCK SYSTEM (W5110-STATC6) BY 'ASHLAND' WITH ACTIVATING HANDLE AT 36" FROM BOTTOM FASTENED TO STILE WITH (2) #10 X 1/2" MACHINE SCREWS AND NUTS HANDLE ACTIVATES DEAD BOLT AND SHOOT BOLTS ENGAGING AT HEAD AND SILL 1/2" DIA. BULLET TIPS SHOOT BOLTS CONNECTED TO LOCK WITH 5/16" DIA. THREADED RODS

OPTION #2

3 POINT SENTINEL LOCK SYSTEM (M185S) BY 'ADAMS RITE' WITH ACTIVATING HANDLE AT 36" FROM BOTTOM FASTENED TO STILE WITH (2) #12 X 1/2" FH MACHINE SCREWS HANDLE ACTIVATES DEAD BOLT AND SHOOT BOLTS ENGAGING AT HEAD AND SILL 1/2" DIA. BULLET TIPS SHOOT BOLTS CONNECTED TO LOCK WITH 5/16" DIA. THREADED RODS

FLUSH BOLT AND PIVOTS AT PIVOT STILE

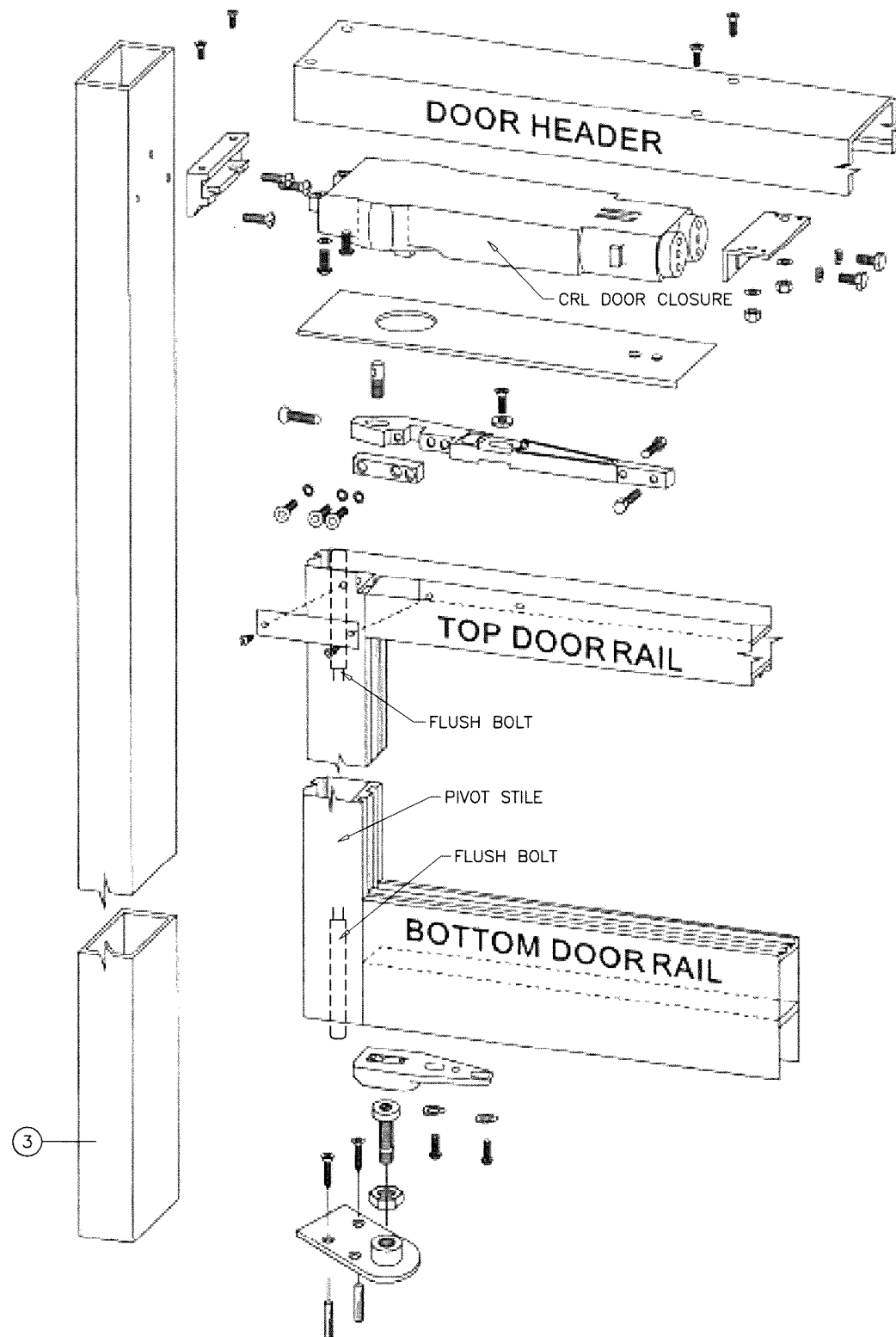
FLUSH BOLTS (FBR-1202) BY 'SULLIVAN & ASSOC.' MANUALLY OPERATED LEVERS AT 27" FROM TOP AND 12" FROM BOTTOM ACTIVATES FLUSH BOLTS PROTRUDING 1/2" INTO HEAD AND 3/8" INTO SILL 1/2" DIA. BULLET TIPS FLUSH BOLTS CONNECTED TO LEVERS WITH 5/16" DIA. THREADED ROD.

CRL 105 DEGREE HOLD OPEN ADJUSTABLE SPRING POWER OVERHEAD CONCEALED DOOR CLOSER 'S' PACKAGE (#CRL8770S) BY 'C. R. LAURENCE' ATTACHED TO HEADER WITH (4) 1/4-20 X 1-1/4" PFH MACHINE SCREWS. BOTTOM PIVOT ATTACHED TO FRAME SILL WITH (2) #12 X 5/8" SELF DRILLING SCREWS

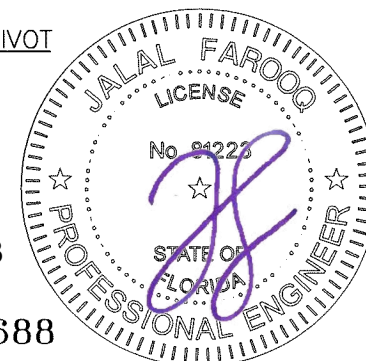
ELECTRICAL FUNCTION IS NOT PART OF THIS APPROVAL.

SEALANT:

ALL JOINTS AND FRAME CONNECTIONS SEALED WITH 'SCHNEE-MOREHEAD 5504' SEAM SEALER.



CRL CLOSURE WITH BOTTOM PIVOT



Sealed: 7/25/2023

FL #33688

afc

AL-FAROOQ CORPORATION
ENGINEERS & PRODUCT DEVELOPMENT
9360 SUNSET DRIVE, SUITE 220
MIAMI, FLORIDA 33173 (C.A.N. 3538)
TEL. (305) 264-8100 FAX. (305) 262-6978

Coastline Outswing/Inswing Pivot Door IZ4



PO Box 100, 401 State Ave. N.
Warroad, MN. 56763

Tel. (218) 386-1430 Ext. 2143

revisions:
no. date by description

date: 02-01-16

scale: 3/8" = 1"

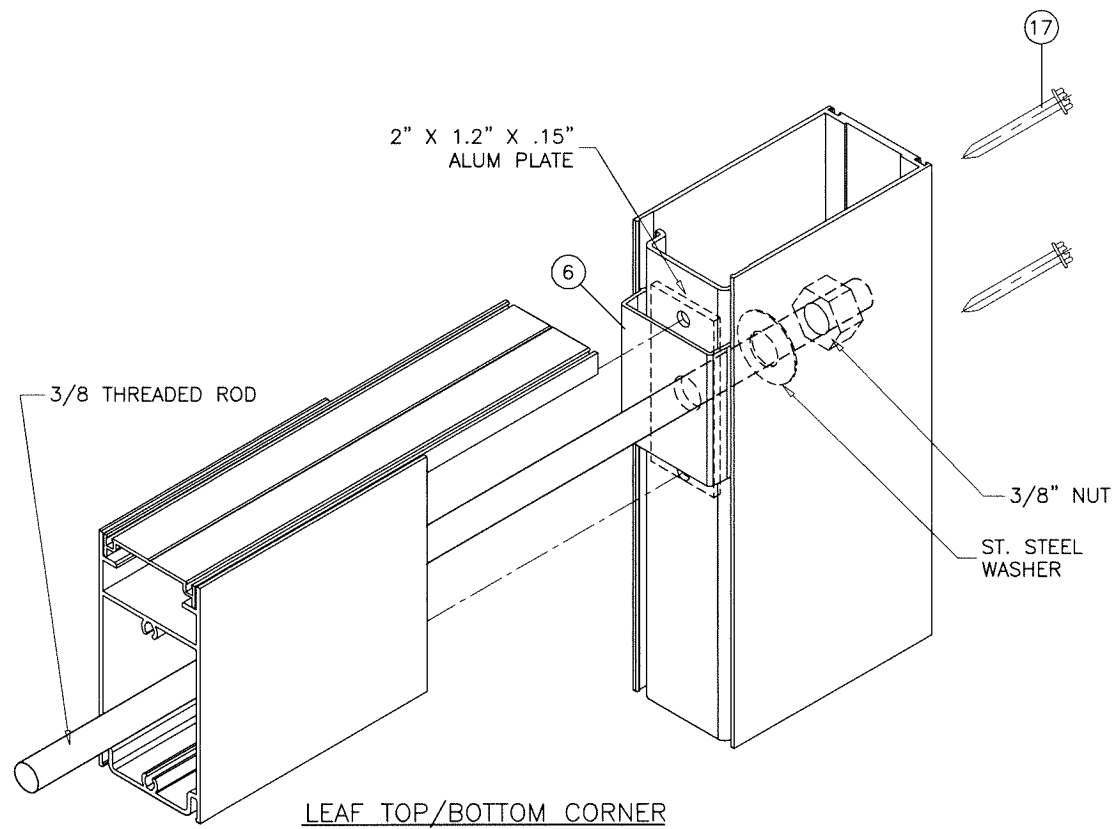
dr. by: TARIQ

chk. by:

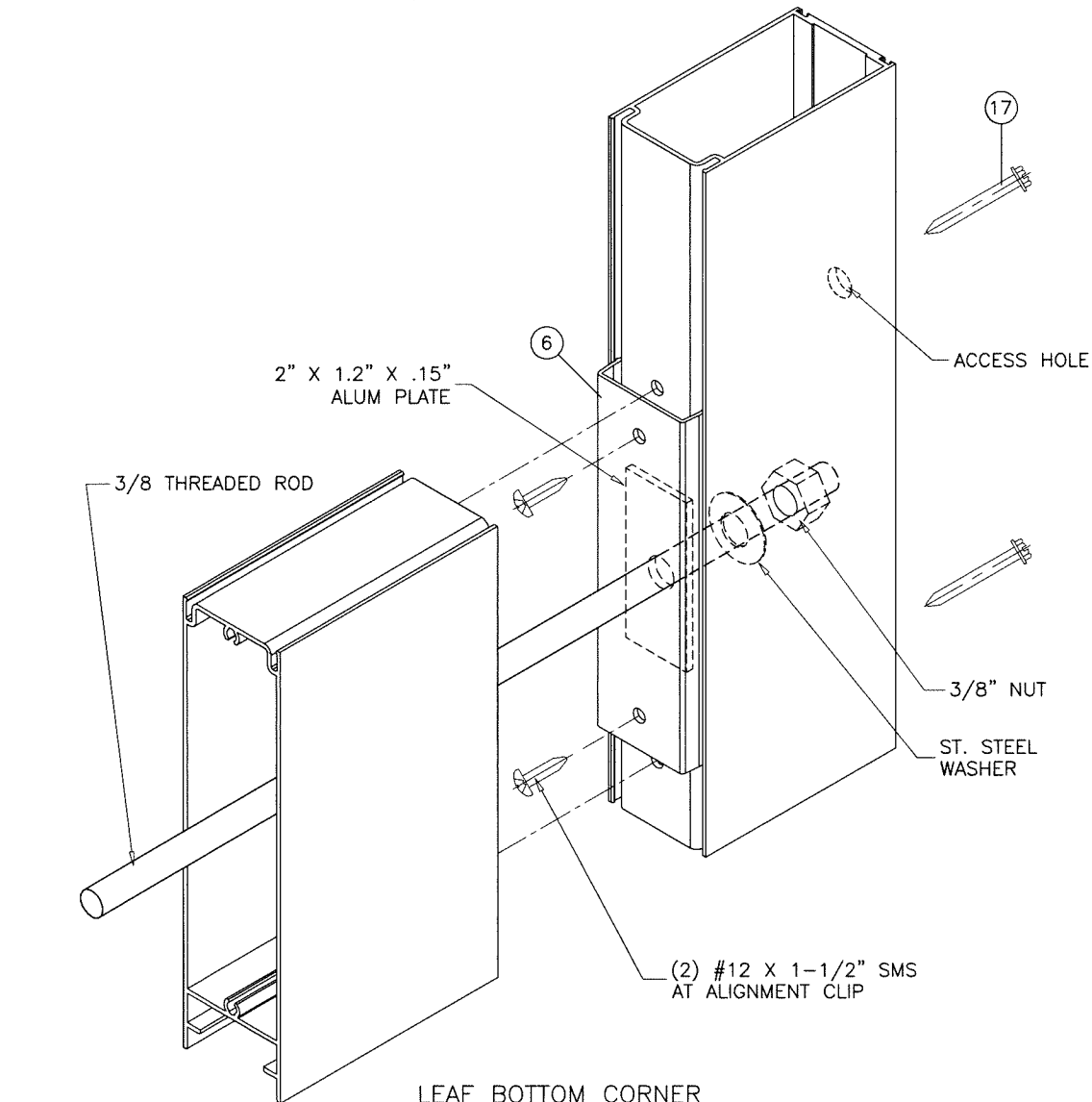
drawing no.
W16-09

sheet 10 of 11

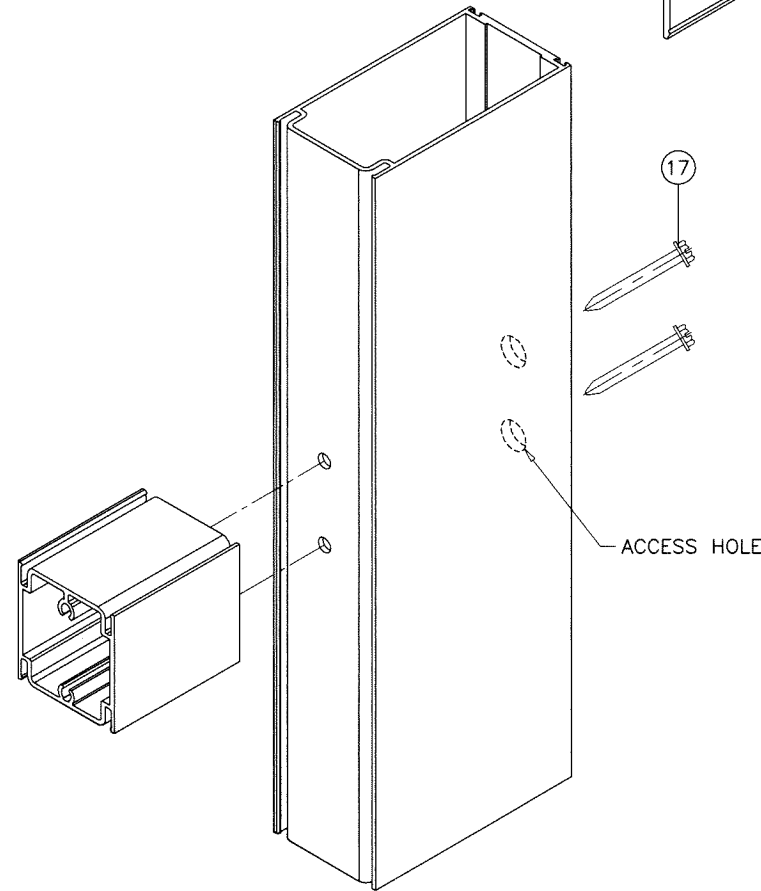
COMP-ANL W16-09SIW



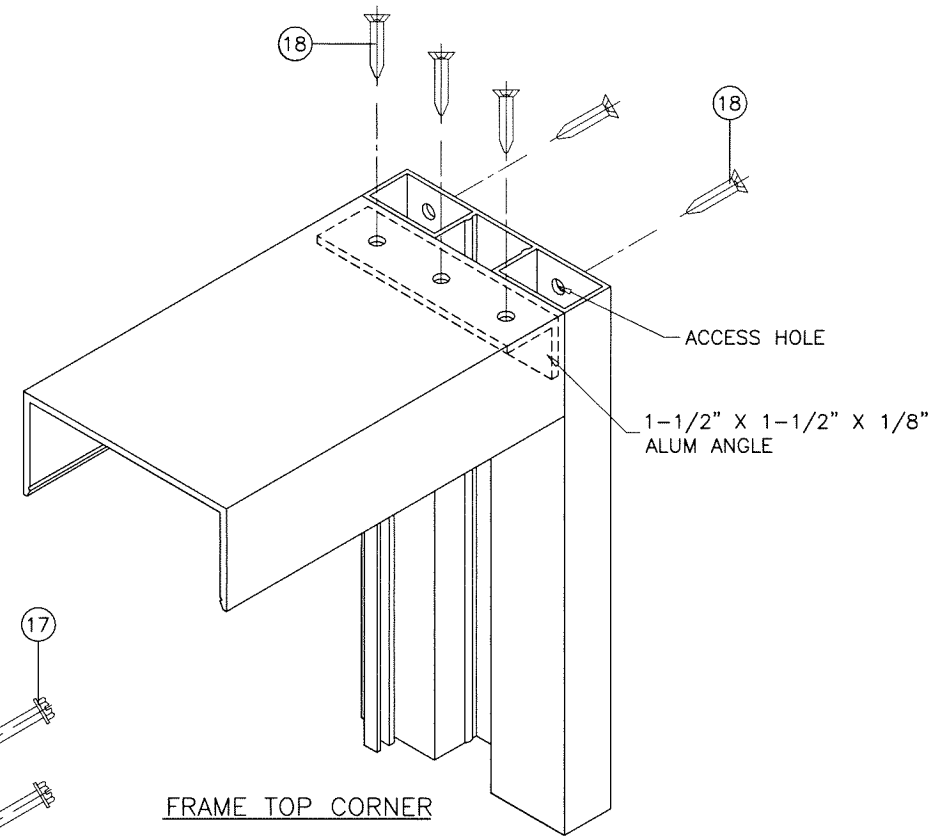
LEAF TOP/BOTTOM CORNER



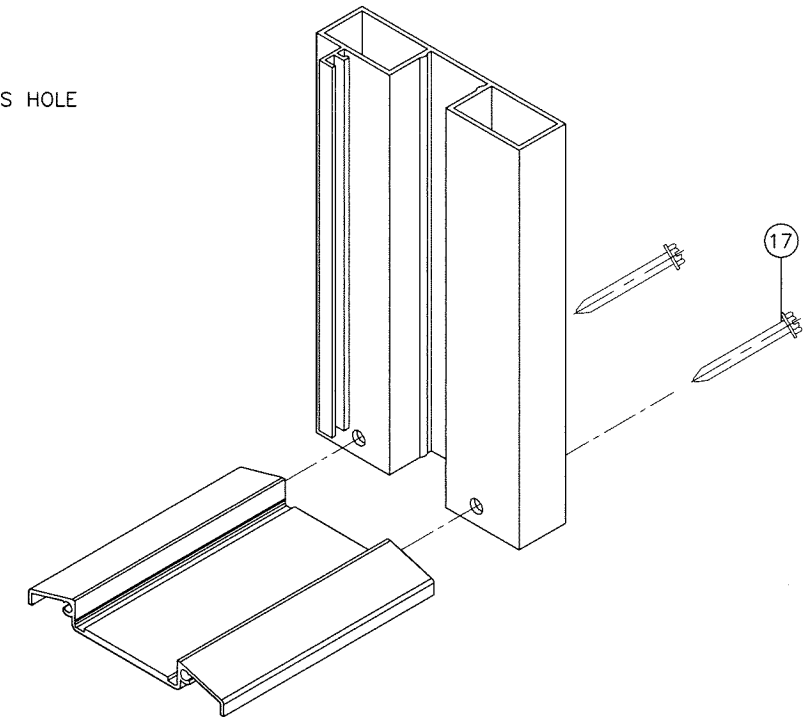
LEAF BOTTOM CORNER



CHAIR RAIL CORNER



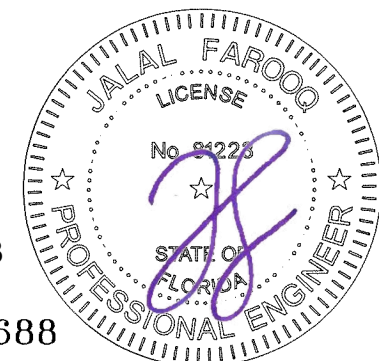
FRAME TOP CORNER



FRAME BOTTOM CORNER

Sealed: 7/25/2023

FL #33688



af c
AL-FAROOQ CORPORATION
 ENGINEERS & PRODUCT DEVELOPMENT
 9360 SUNSET DRIVE, SUITE 220 (C.A.N. 3538)
 MIAMI, FLORIDA 33173
 TEL. (305) 264-8100 FAX. (305) 262-6978
 COMP-ANL\W16-09SIW

Coastline Outswing/Inswing Pivot Door IZ4
MARVIN
 PO Box 100, 401 State Ave. N.
 Warroad, MN. 56763
 Tel. (218) 386-1430 Ext. 2143

revisions:	no	date	by	description

date: 02-01-16
 scale: 3/8" = 1"
 dr. by: TARIQ
 chk. by:

drawing no.
W16-09
 sheet 11 of 11