

Before you Begin

This instruction is for replacing French Casemaster Sash with the new Siegenia™ locking hardware.

Table of Contents

Remove Existing Sash and Hardware	1
Install the New Sash	2
Install the Sash Ramp and Sill Strike	2
Install the Handle Bracket	3
Install the Shoot Bolt Receiver	4

Standard Parts Shipped	
Description	Part/Profile
Primary Sash and Secondary Sash	Includes sash hardware
Hardware cover w/barb	W8459
Shoot bolt strike w/screws	10814600 11800736
Handle bracket w/screws	10816023 11800740
Run-up blocks w/screws	10816095 11800736
Sequential sill strike w/screws	10816093 11830011

You Will Need to Supply	
Safety glasses	Dusk mask
Protective gloves	Tape measure
Power driver with bits	Utility knife
3/32" drill bit	Masking tape

NOTE: Numbers listed in parentheses () are metric equivalents in millimeters rounded to the nearest whole number.

Seek Assistance

Casemaster sash may be heavy and awkward to handle, use an assistant.

Remove Existing Sash and Hardware

1. Unlock and open the sash until it lines up with the gap in the track. Disengage the track from the sash. Remove the sash screws from the hinges, remove and discard the existing sash. See figure 1.



Figure 1

2. Use a #3 Phillips screwdriver to remove the existing locking handle and discard. See figure 2.

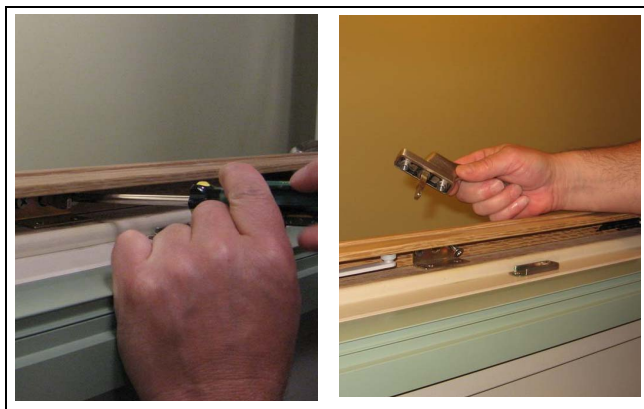


Figure 2

3. Remove the wood sill hardware cover, taking care not to mar the side jambs. See figure 3.



Figure 3

4. Remove handle bracket, sill strike and sill cover connecting barb. See figure 4.



Figure 4

Install the New Sash

1. Remove the old gasket material from the hinges. See figure 5.



Figure 5

2. Remove liner from gaskets at hinge locations.



Figure 6

3. Install the new sash and secure to the hinges with #7x1/2" Machine screws. See figure 7.



Figure 7

Install the Sash Ramp and Sill Strike

1. Apply a good of grade of color matched sealant in holes where old strike was removed. See figure 8.

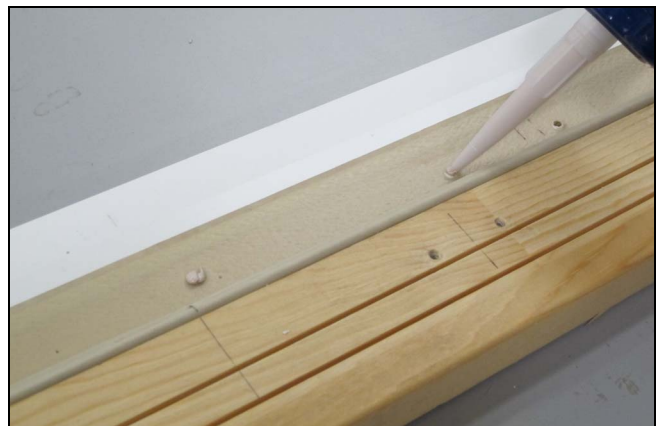


Figure 8

2. Place a piece of masking tape at the center of the unit at the sill. Using a tape measure determine the exact center of the unit and mark with a pencil. See figure 9.

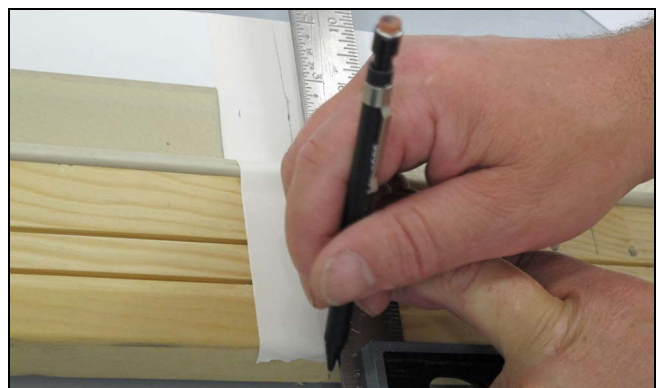


Figure 9

3. See instructions on the sash lift ramp template for wood or clad units. Line up the sill mark template on the center line as indicated on the template found at the back of this instruction. At the indicated locations use an awl to mark the location of the sash lift ramp screw holes. See figure 10.

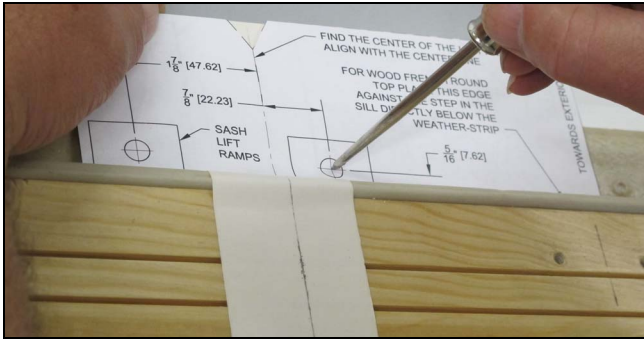


Figure 10

4. Drill 3/32" (2.38) pilot holes and install the sash lift ramps with the supplied #7x5/8" screw. See figure 11.



Figure 11

5. See instructions on the sill strike template for wood or clad units. Line up the sill mark template on the center line as indicated on the template found at the back of this instruction. At the indicated locations use an awl to mark the location of the sill strike screw holes. See figure 12.



Figure 12

6. Drill 3/32" pilot holes and install the sill strike with the supplied #7x5/8" screw. See figure 13.



Figure 13

Install the Handle Bracket

1. Line up the handle bracket template on the center line as indicated on the template found at the back of this instruction. At the indicated locations use an awl to mark the location of the handle bracket screw holes. See figure 14.



Figure 14

2. Drill 3/32" (2.38) pilot holes and install the handle bracket with the supplied #8x1" screws. See figure 15.



Figure 15

Install the Shoot Bolt Receiver

1. First remove the existing shoot bolt receiver from the head jamb. You may need to drill a small hole in the receiver and insert a slightly oversized screw. Use a large pliers to pull on the screw to remove the existing shoot bolt receiver.
2. Line up the template cut-line on the edge of the unit as indicated on the template. Center the shoot bolt template over the existing receiver hole. secure in place with masking tape. Use an awl to mark and pre-drill the screw hole locations. See figure 16.



Figure 16

3. Use a small wood chisel to remove the wood from the head jamb until the new shoot bolt receiver sits flat and the screw holes line up with the pre-drilled holes. See figure 17.



Figure 17

4. Install the shoot bolt receiver with the supplied #7x5/8" screws. See figure 18.



Figure 18

5. Press the bottom hardware cover into place. See figure 19.



Figure 19

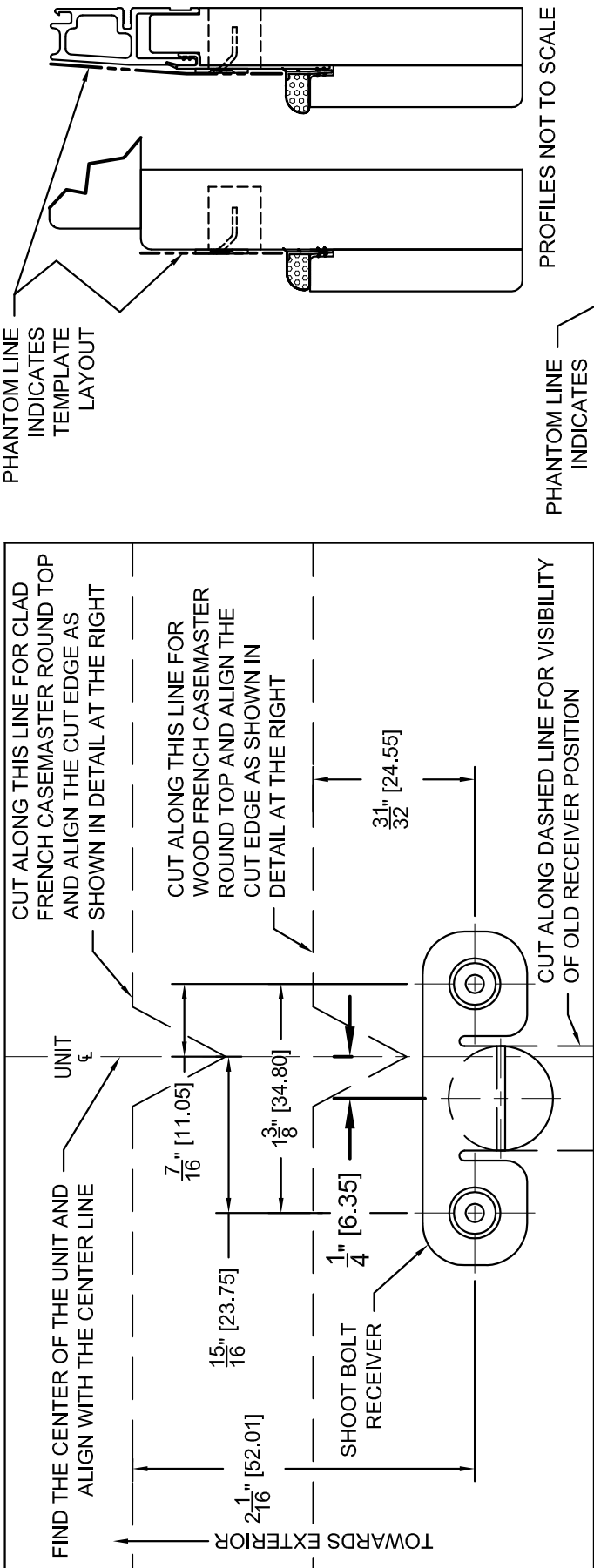
6. Install the new locking handle with a #3 Phillips screwdriver, press on the hardware covers and install the crank handles. See figure 20.



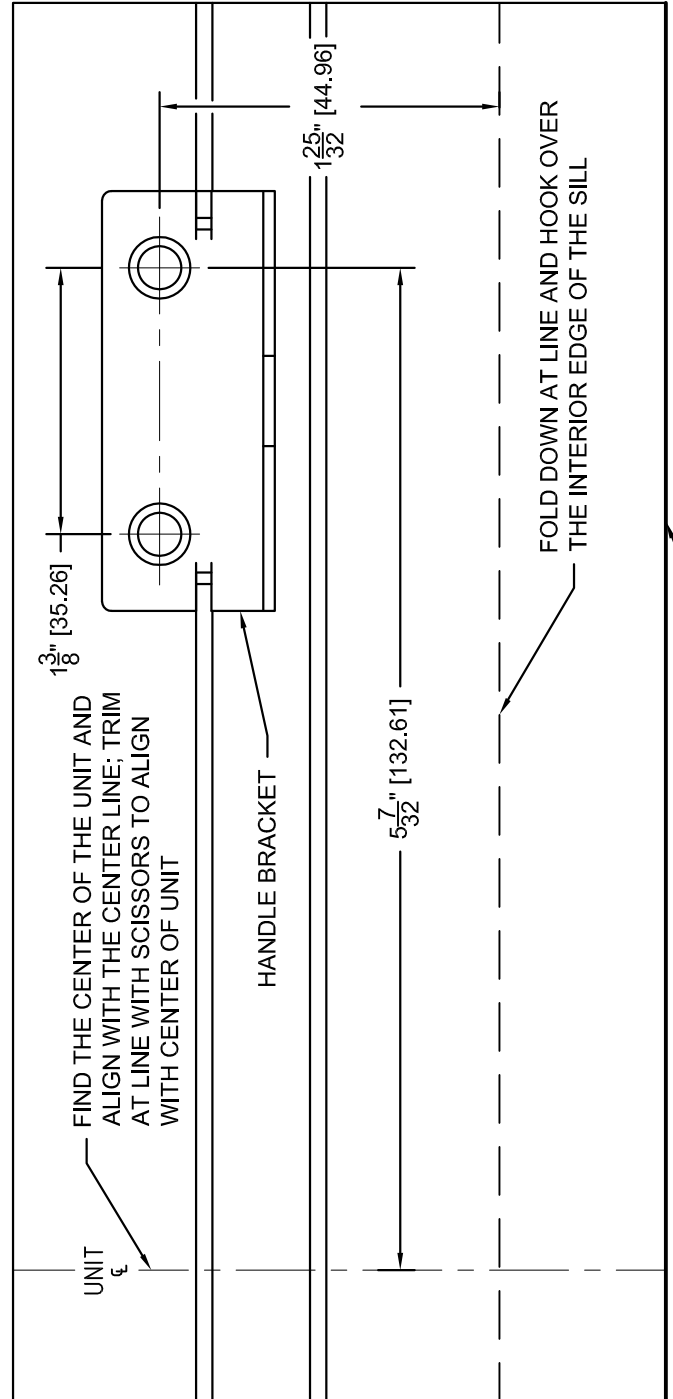
Figure 20

7. Operate the unit to test for smooth operation.

Handle Bracket and Shoot Bolt Templates



TRIM WITH SCISSORS ALONG LINE



PHANTOM LINE INDICATES TEMPLATE LAYOUT

PROFILES NOT TO SCALE

PHANTOM LINE INDICATES TEMPLATE LAYOUT

Sash Lift Ramp and Sill Strike Templates

