

Coastline Casement Windows

Unit Features.....	1
Maximum Guidelines.....	3
Casement Section Details.....	4
Direct Glaze Casement Section Details.....	6
Awning Section Details.....	7

Unit Features

Product Name: Coastline Casement IZ4, Coastline Direct Glaze Casement IZ4 and Coastline Awning IZ4 (Awning formerly known as Project Out)

Abbreviation: COCA IZ4, CODG CA IZ4, COAWN IZ4

Frame Material and Construction:

- .080" typical wall thickness
- 3.000" frame depth
- Optional Color Finishes:
 - Stone White
 - Bronze
 - Ebony
 - Walnut
 - Hazelnut
 - Red Cinnamon
 - English Oak
 - White Kynar
 - Bronze Kynar
 - Black Kynar
 - Custom Colors available

Swing/Style:

- Right Hand & Left Hand Casement (90° Max Open Position)
- Bottom for Awning (16" Max Open Position)

Screen:

- Optional (Fiberglass Mesh)

Hardware:

- Crank Out
- Multi Point Lock
- Locking points based on size
- Foldable Handles
- E-Guard coated Options:
 - Stainless Steel hardware
 - Washable Hinges
 - 4" Sash Limiter

Sill:

- Standard Sill

Divided Lite Options:

- SDL/GBG Patterns:
 - Equal Rectangular
 - Prairie
- Simulated Divided Lite Profiles:
 - 1" Ogee (ext) / 1" Flat (int)
 - 1" Square (ext) / 1" Flat (int)
 - 1" Flat (ext) / 1" Flat (int)
 - 2" Flat (ext) / 2" Flat (int)
- GBG Profile:
 - 13/16" Sightline

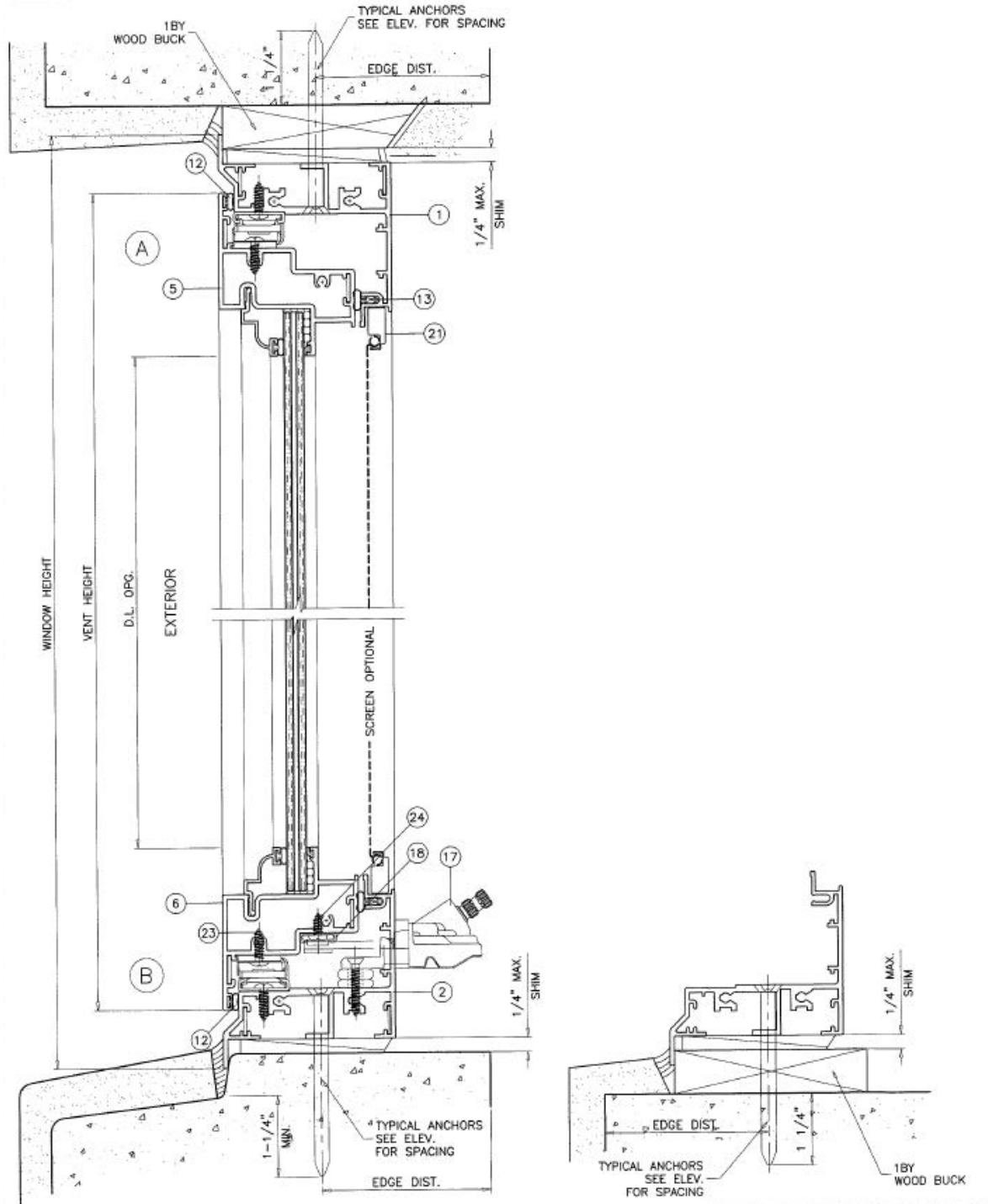
Glass and Glazing:

- Glass Options:
 - 5/16" HS Laminated PVB or SGP
 - 7/16" HS Laminated PVB or SGP
 - 11/16" Insulated Laminated PVB or SGP
- Glass Tint Options
 - Clear
 - Grey Tint
 - Bronze Tint
 - Green Tint
 - Azurelite Blue Tint
 - LoE 366 Clear
 - LoE 366 Grey
 - LoE 366 Bronze
 - LoE 366/ i89
- Options:
 - White Interlayer
 - Pat 62 Obscure
 - Rain
 - Glue Chip
 - Double Tint
 - Neat
 - Ogee Glazing Beads

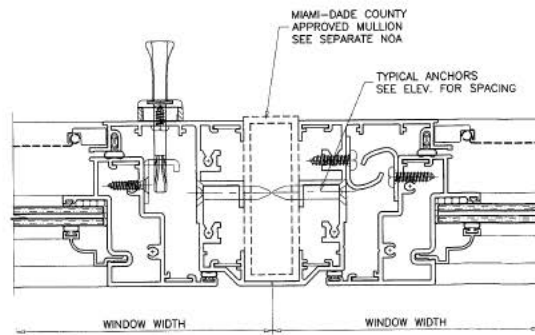
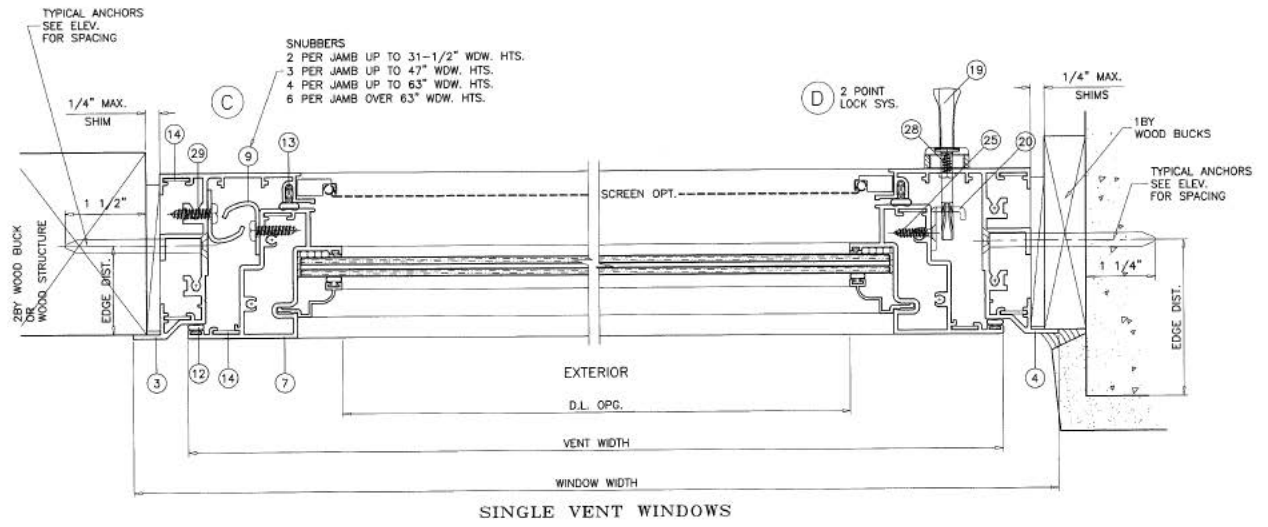
Maximum Guidelines

PRODUCT ABBREVIATION	MAX FRAME AREA (sq ft)	MAX FRAME WIDTH (in)	MAX FRAME HEIGHT (in)	MAX DESIGN PRESSURE (PSF)	OPERATION
COCA IZ4	20.5	42	84	+ 80 / -80	LH, RH
CODG CA IZ4	47	106.375	106.375	+ 80 / -80	Fixed
COAWN IZ4	20.5	84	84	+ 80 / -80	Operable
Max Area Cannot Be Exceeded, Reference Florida Product Approvals For Actual Design Pressure					

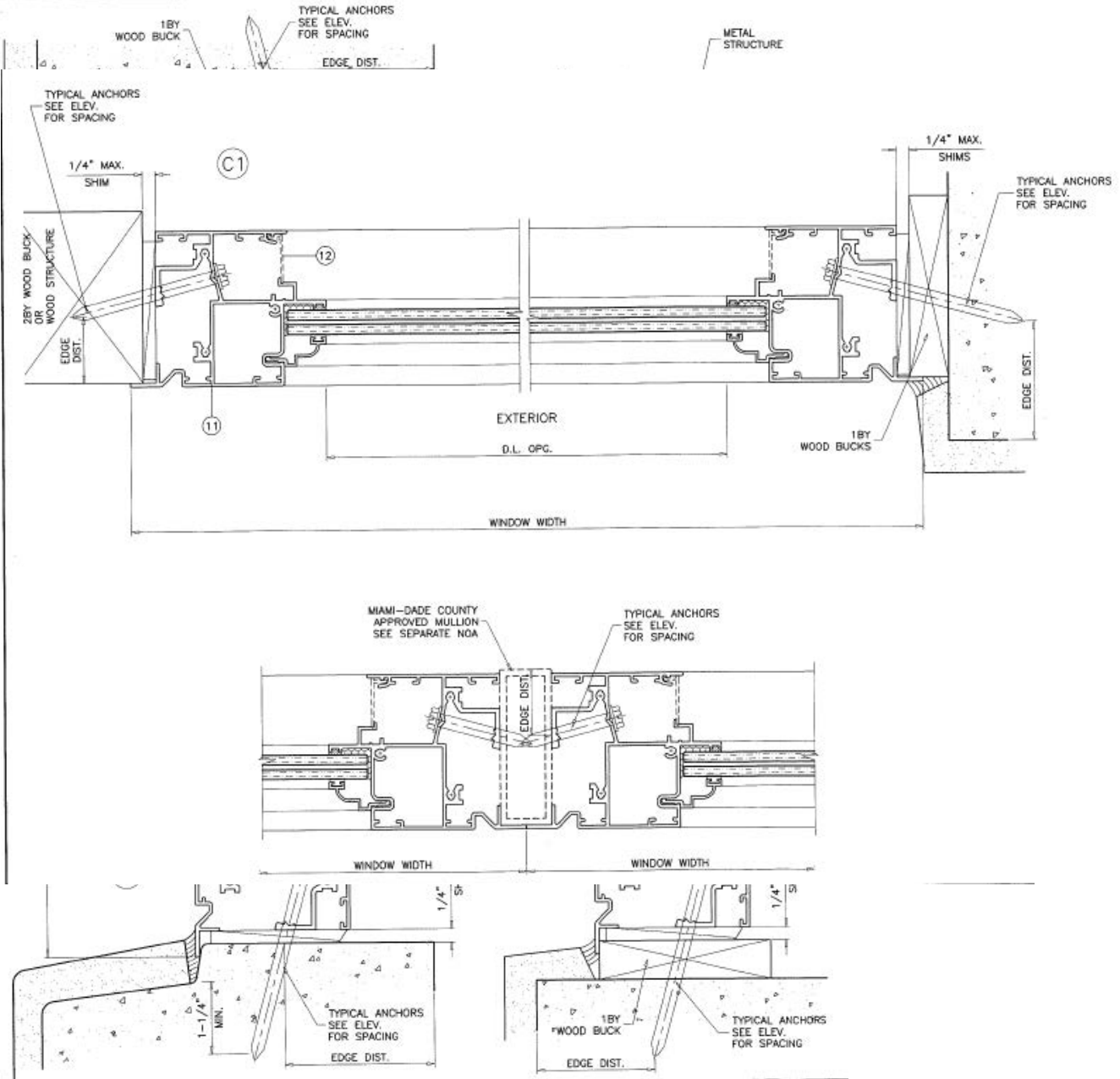
Section Details Casement



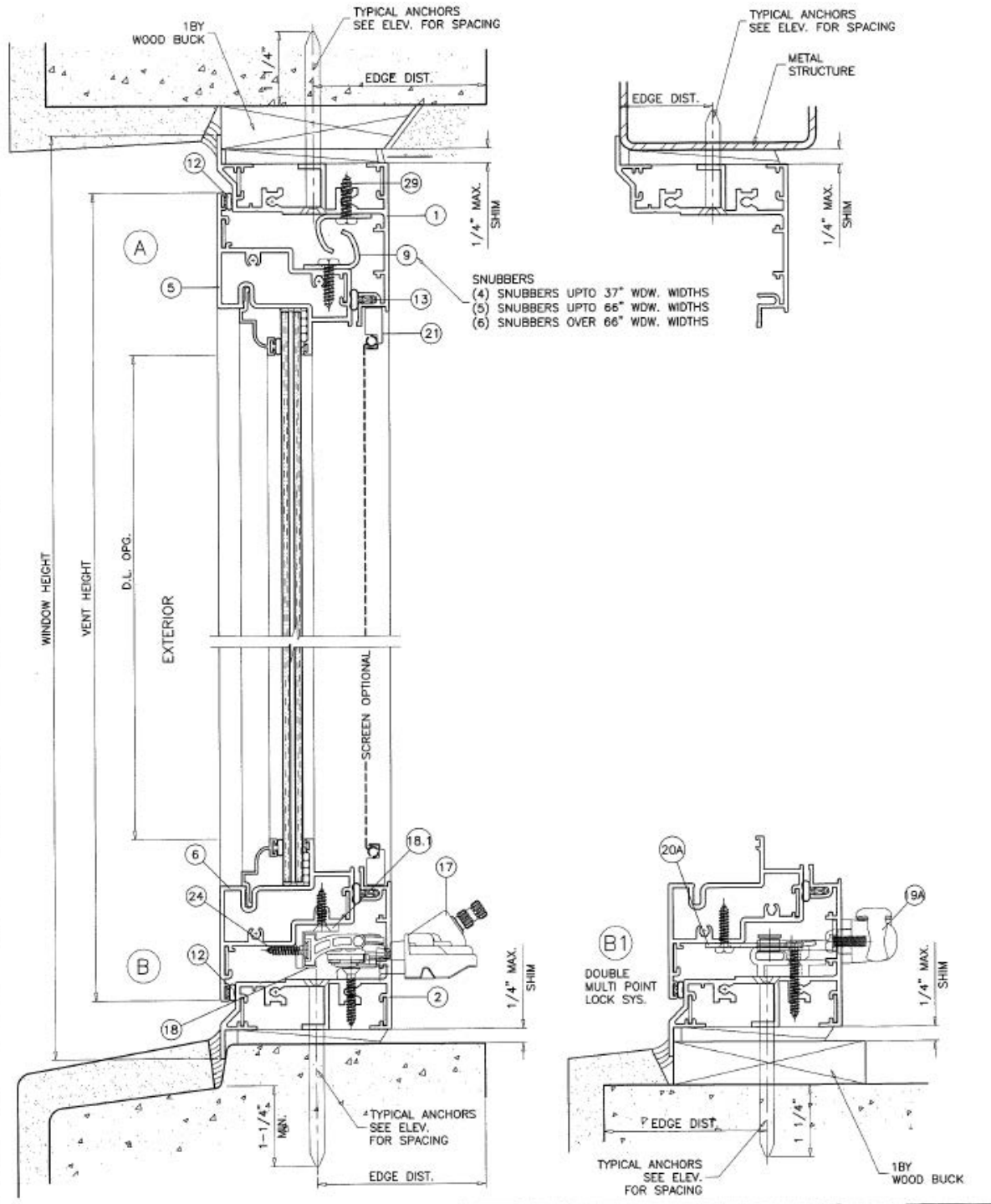
Section Details Casement



Section Details Direct Glaze Casement



Section Details Awning



Section Details Awning

