

Sash Lift Installation

Field Applied Instructions



The following instruction details how to replace the sash lift on the Essential Single Hung. This instruction also shows how to fix loose sash lifts or stripped out holes by sliding the backer block.

INCLUDED IN PACKAGE:

- 1 – Sash Lift
- 2 – #6 X 7/8" Phillips flat head screws

1. Remove screws fastening existing sash lift. See figure 1.

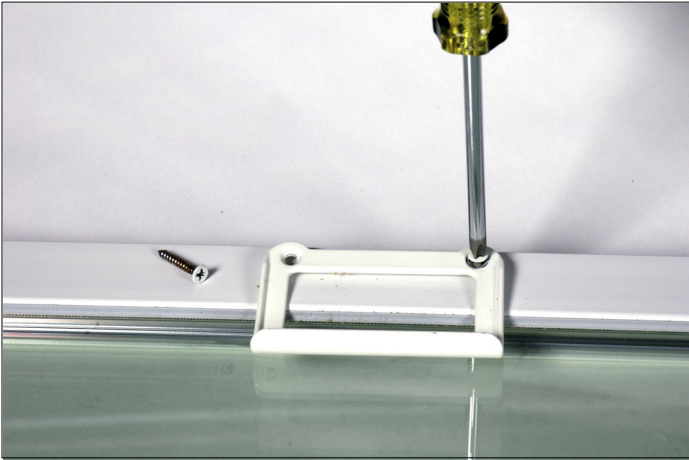


Figure 1: Remove screws from existing sash lift.

2. Using the existing holes as a guide, install new sash lift and reuse screws if possible. Do not over tighten screws. See figure 2.

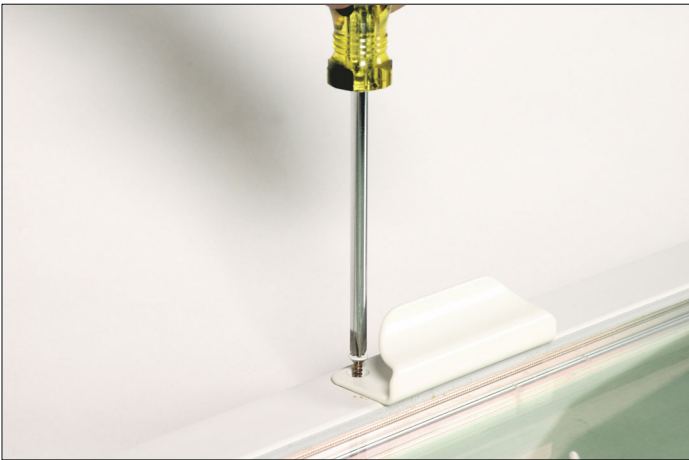


Figure 2: Install end sash lift.

YOU WILL NEED:

- Drill/driver with #2 Phillips head bit or a #2 Phillips head screwdriver
- Scratch Awl (for moving backer if necessary)
- 1/8" (3) Drill Bit

3. Occasionally the backer that helps fasten the lift to the sash gets stripped out. If this happens, the screws will not hold properly. To fix this, use a power drill and 1/8" to bit bore a hole through the layer of Ultrex between the two existing screw holes. See figure 3.

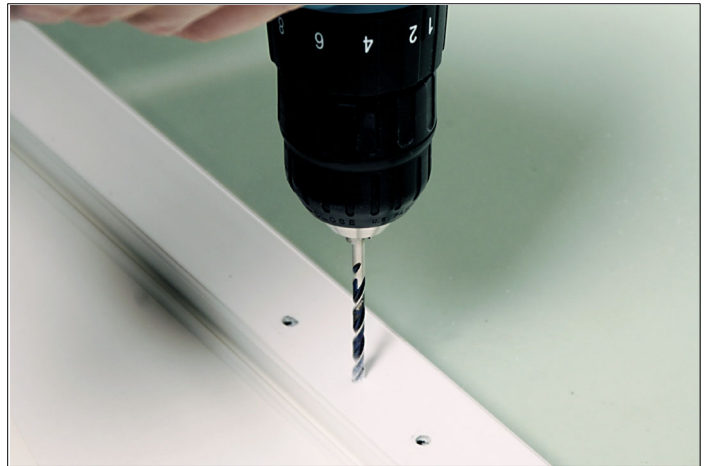


Figure 3: Drill hole to access backer.

4. Pry on the backer with a sharp scratch awl to move it over slightly. Then install the new sash lift. See figure 4.



Figure 4: Use scratch awl to move backer.