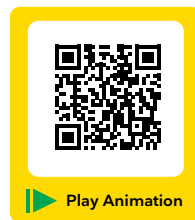


# Modern Quickstart Guide

## Multi-Slide Door-Stacked

### Frame Assembly and Installation Instruction

19915909 - 2022-06-06



**STEP 9** **INSTALL THE PANELS** from the exterior: Install the primary panel first, then the secondary panels and stationary last. Reverse the order when installing panels from the inside. Complete fastening of stationary panels and install bumpers..

#### INTRODUCTION

This instruction is a reference tool for installers to quickly summarize the major steps of an installation and to provide links to the full detailed instructions, videos and other tools. The installer must read the full instructions in its entirety and rely on that document for all warnings, procedures, and standards.

Download a bar code scanner or QR Code scanner for your mobile device and scan the QR code to open a PDF version of the full instructions. Some sections also have QR codes that link to animated videos and other resources.



**WARNING!** DO NOT lift or move without proper equipment. Read, understand, and follow all lift equipment manufacturers' instructions and safety information.

#### IMPORTANT LINKS

- Full Instructions: [https://www.marvin.com/download?Pub\\_ID=5077](https://www.marvin.com/download?Pub_ID=5077)
- Site Preparation: [https://www.marvin.com/download?pub\\_id=5076](https://www.marvin.com/download?pub_id=5076)
- MNMSD Animation Playlist: <https://www3.marvin.com/download?vid=168>



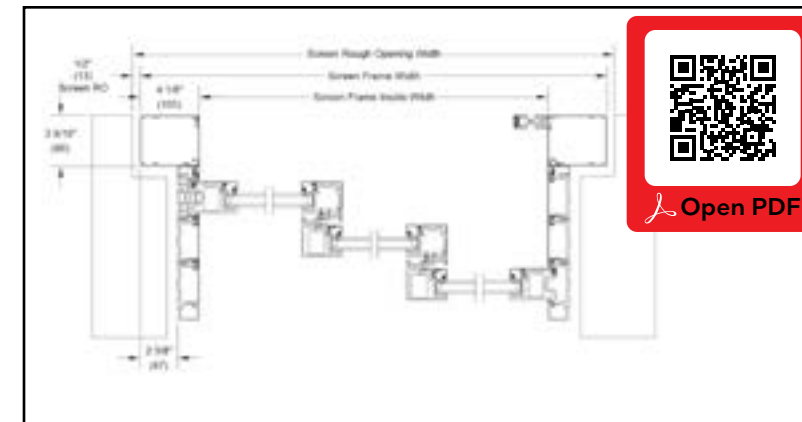
**STEP 10** **FRAME COVERS:** Install in order: sill, head jamb, and jamb covers. (exterior shown).



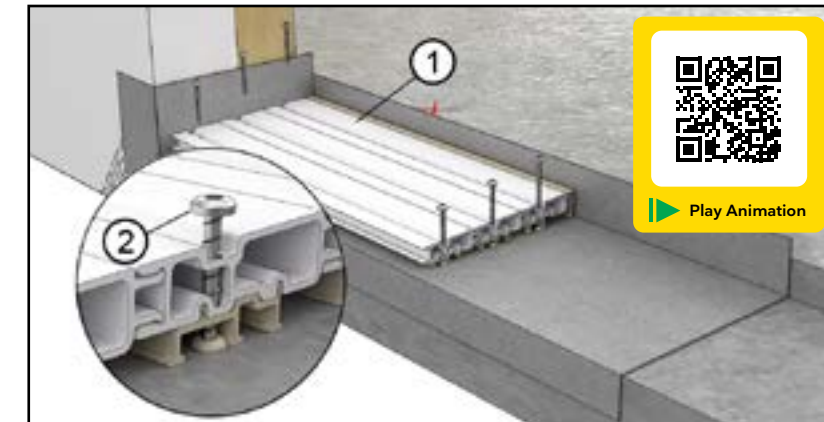
**STEP 11** **FLASH and SEAL** to the door following methods found in ASTM E2112.



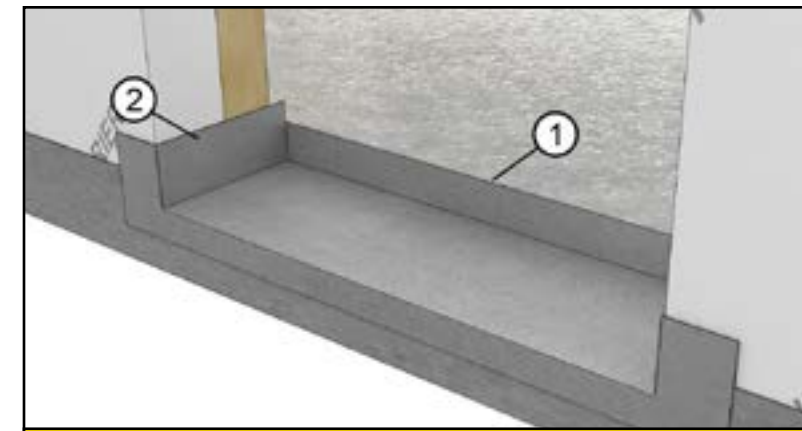
**STEP 12** **INSULATE THE OPENING.** Use backer rod (3) and insulate (2). Seal joints where sheet rock returns to the frame (1).



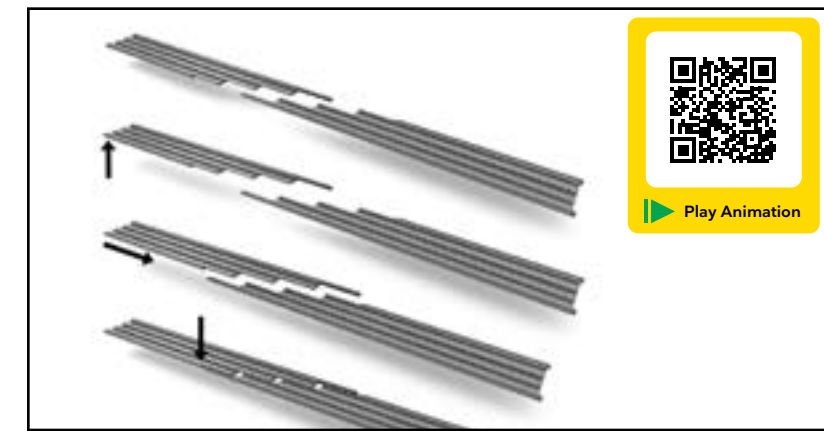
**STEP 1** **Site Prep:** Frame your opening according to specs and recommendations found in the site prep handbook.



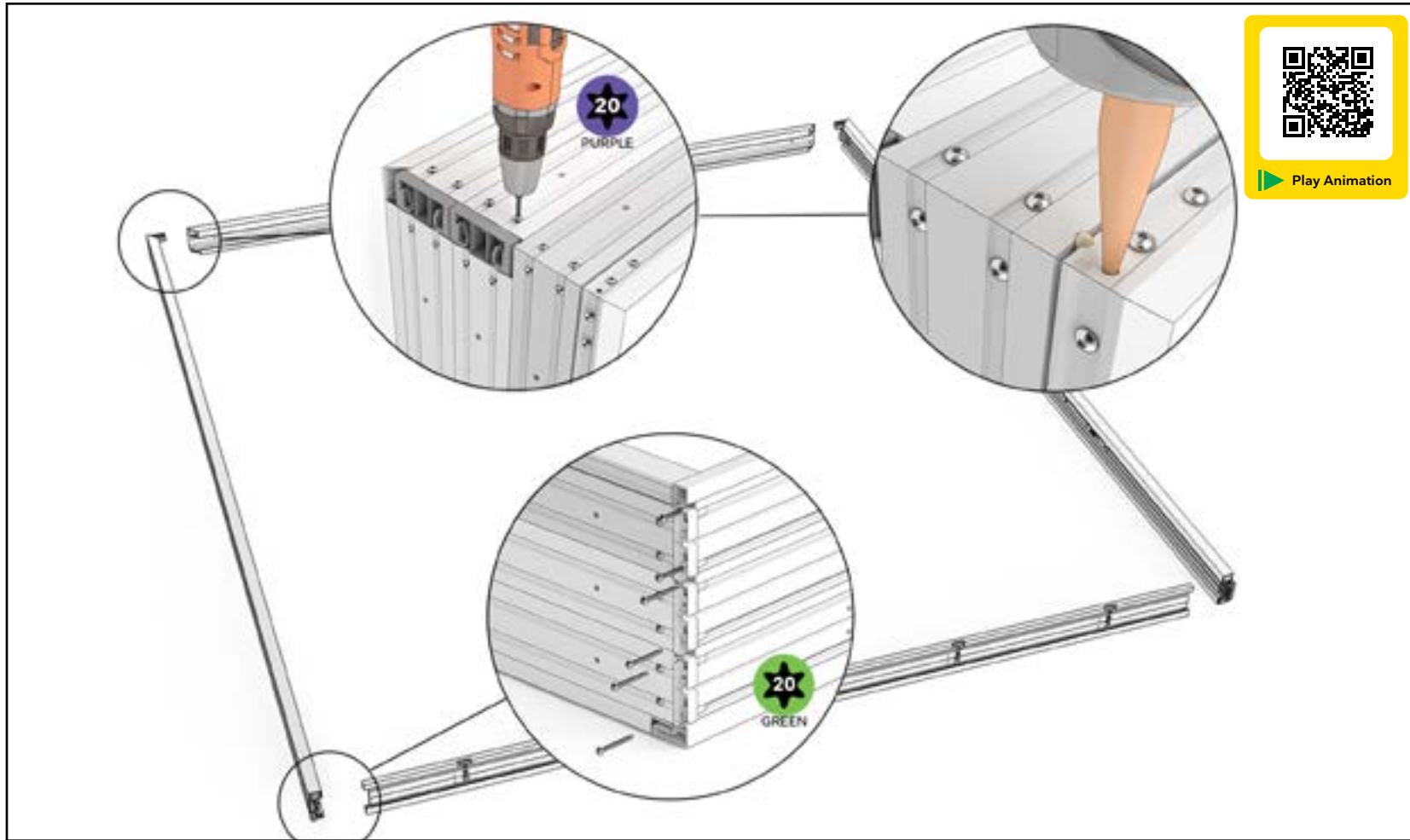
**STEP 2** **DOORS WITH HP SILLS:** Install the pre-assembled sill slope (1) and fasten with screws provided (2).



**STEP 3** **Install a panning.** Integrate the panning into your building's water management system.



**STEP 4** **SPLICE** head jamb and sill components if your door exceeds 21 feet in length.



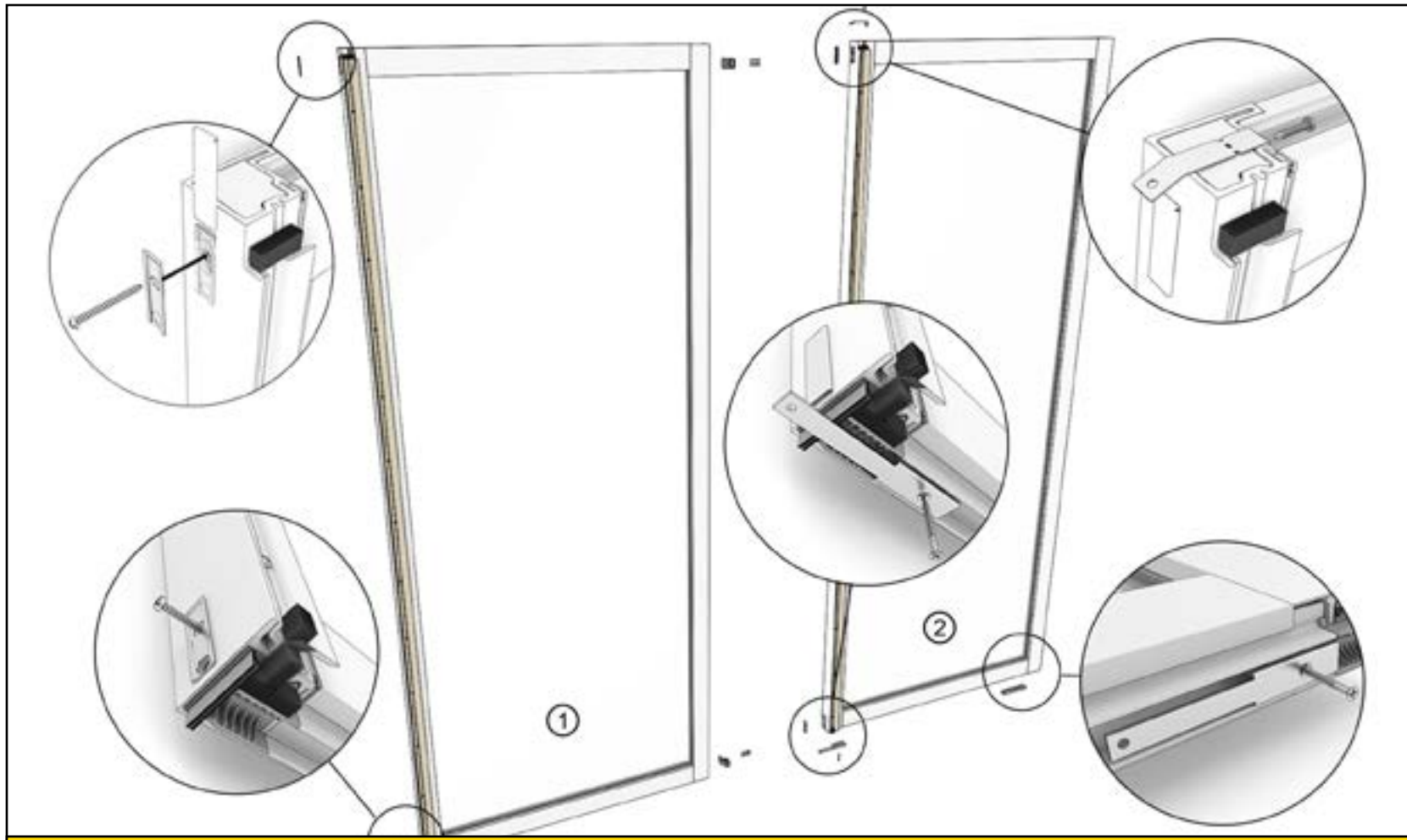
**STEP 5 ASSEMBLE THE FRAME:** Jamb's have the corner keys pre-assembled. Use the color coded screws to fasten the corners to the head jamb and sill, then inject sealant at the head jamb until you see squeeze out.



**STEP 6 INSTALL THE FRAME:** Center the frame in the opening. Verify the sill is level. Shim the bottom of the jamb and fasten the sill near the stationary side.



**STEP 7 SQUARE THE FRAME AND COMPLETE FASTENING**



**STEP 8 PREP THE PANELS:** Attach cover retainers and covers on the stiles of secondary panels (1) and stationary panels (2). Attach stationary brackets to the top and bottom of the stationary panels