

Elevate Bi-Fold Door Configurations

Contents

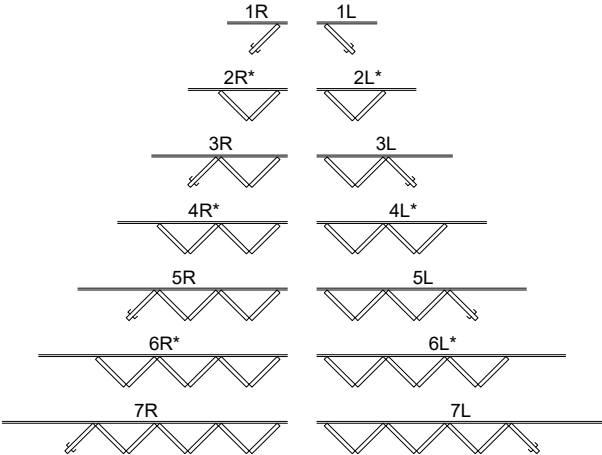
Configurations	2
Uni-directional - Left- 1L	3
Uni-directional - Right- 1R	4
Uni-directional - Left- 2L	5
Uni-directional - Right- 2R	6
Uni-directional - Left - 3L	7
Uni-directional - Right - 3R	8
Uni-directional - Left - 4L	9
Uni-directional - Right - 4R	10
Uni-directional - Left - 5L	11
Uni-directional - Right - 5R	12
Uni-directional - Left - 6L	13
Uni-directional - Right - 6R	14
Uni-directional - Left - 7L	15
Uni-directional - Right - 7R	16
Uni-directional (equal) - Operating Panel - 1L1R (LH)	17
Uni-directional (equal) - Operating Panel - 1L1R (RH)	18
Bi-parting (equal) - 2L2R	19
Bi-parting (equal) - 3L3R (LH)	20
Bi-parting (equal) - 3L3R (RH)	21
Uni-directional (unequal) - Operating Panel - 1L2R	22
Uni-directional (unequal) - Operating Panel - 2L1R	23
Uni-directional (unequal) - Operating Panel - 3L1R	24
Uni-directional (unequal) - Operating Panel - 1L3R	25
Bi-parting (unequal) - Operating Panel - 4L1R	26
Bi-parting (unequal) - Operating Panel - 1L4R	27
Bi-parting (unequal) - Operating Panel - 5L1R	28
Bi-parting (unequal) - Operating Panel - 1L5R	29
Bi-parting (unequal) - Operating Panel - 6L1R	30
Bi-parting (unequal) - Operating Panel - 1L6R	31

Configurations

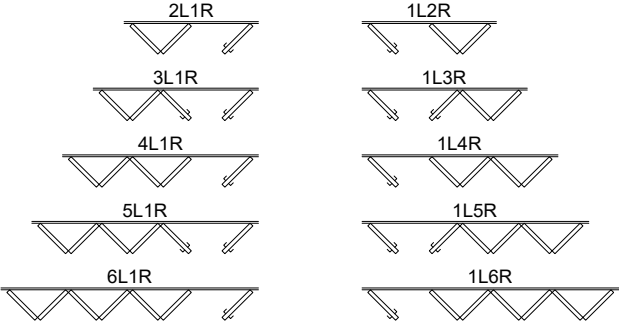
Stationary Unit



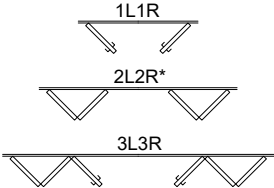
Uni-directional Left or Right Units



Uni-directional Left or Right Units with Operating Panel/s



Bi-parting (equal) Units

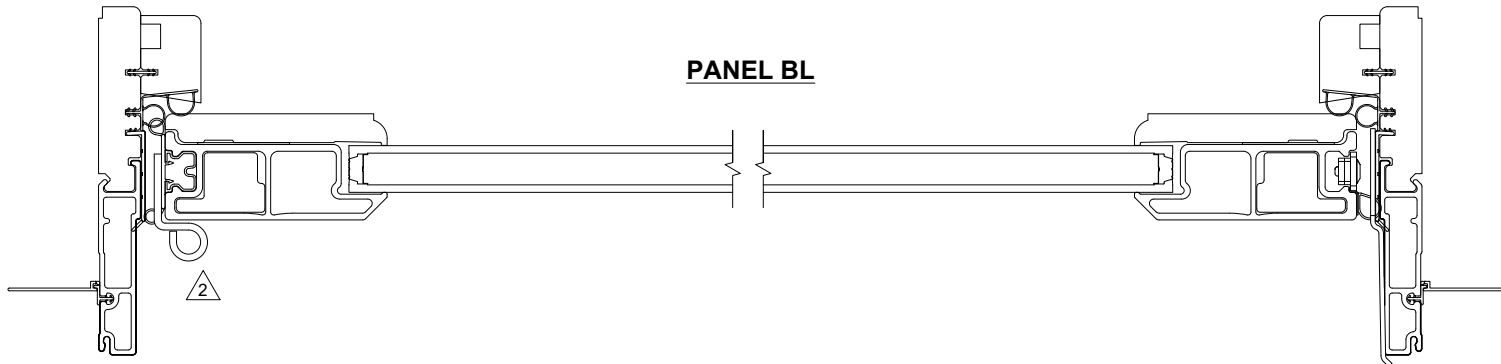


*not accessible from exterior

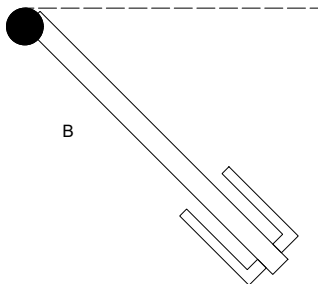
Uni-directional - Left- 1L

USE THIS DIAGRAM IN CONJUNCTION WITH THE PROVIDED INSTALLATION INSTRUCTIONS TO DETERMINE HINGE AND PANEL LOCATIONS

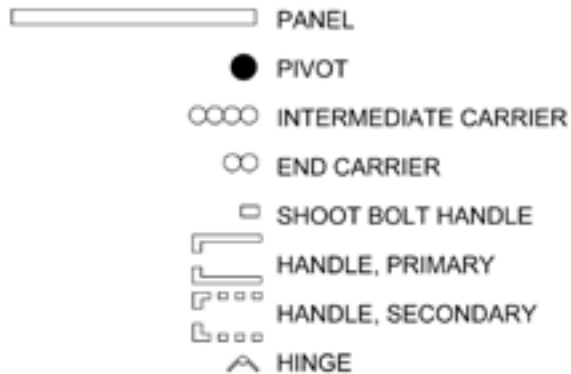
1L



OPERATION DIAGRAM
NOT TO SCALE



INTERIOR
↕
EXTERIOR



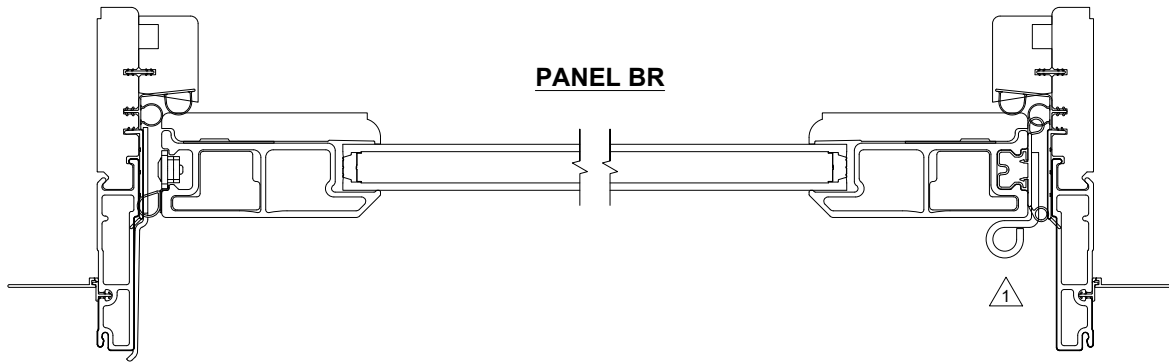
HINGE MATRIX

HINGE #	HINGE DESCRIPTION
1	WALL PIVOT - RIGHT HAND
2	WALL PIVOT - LEFT HAND
3	INTERMEDIATE CARRIER
4	END CARRIER - RIGHT HAND
5	END CARRIER - LEFT HAND
6	OFFSET HINGE
7	STRAIGHT HINGE

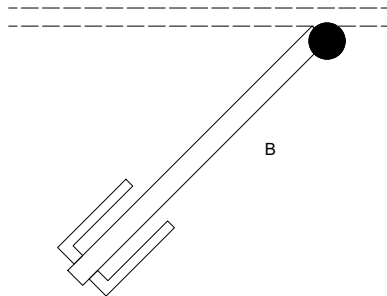
Uni-directional - Right- 1R

USE THIS DIAGRAM IN CONJUNCTION WITH THE PROVIDED INSTALLATION INSTRUCTIONS TO DETERMINE HINGE AND PANEL LOCATIONS

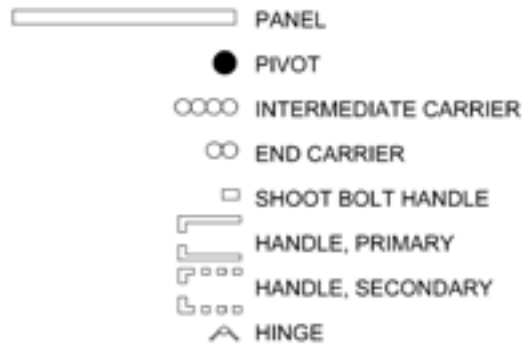
1R



OPERATION DIAGRAM
NOT TO SCALE



INTERIOR
↕
EXTERIOR



HINGE MATRIX

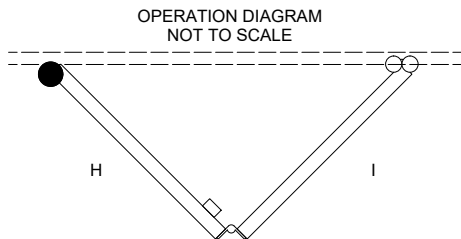
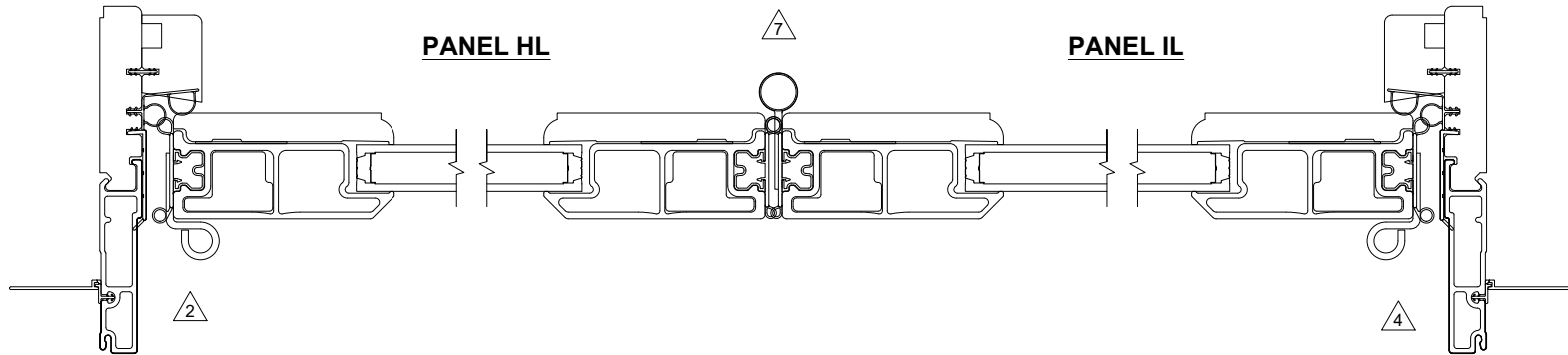
HINGE #	HINGE DESCRIPTION
1	WALL PIVOT - RIGHT HAND
2	WALL PIVOT - LEFT HAND
3	INTERMEDIATE CARRIER
4	END CARRIER - RIGHT HAND
5	END CARRIER - LEFT HAND
6	OFFSET HINGE
7	STRAIGHT HINGE

19916407

Uni-directional - Left- 2L

USE THIS DIAGRAM IN CONJUNCTION WITH THE PROVIDED INSTALLATION INSTRUCTIONS TO DETERMINE HINGE AND PANEL LOCATIONS

2L



INTERIOR

 EXTERIOR

- PANEL
- PIVOT
- INTERMEDIATE CARRIER
- END CARRIER
- SHOOT BOLT HANDLE
- HANDLE, PRIMARY
- HANDLE, SECONDARY
- HINGE

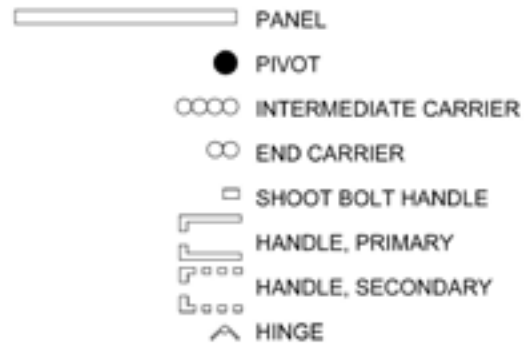
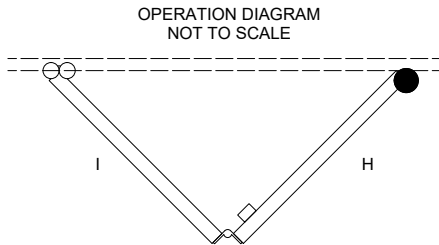
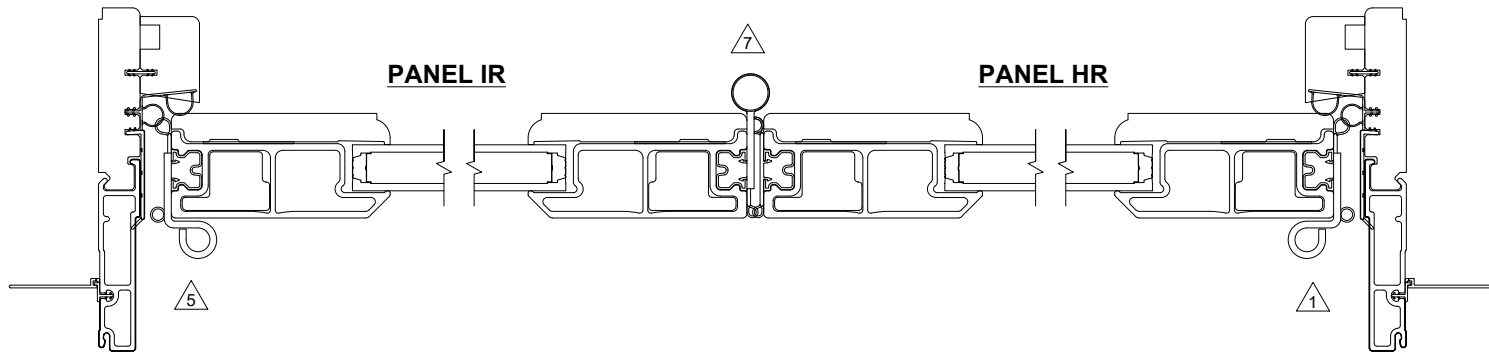
HINGE MATRIX

HINGE #	HINGE DESCRIPTION
1	WALL PIVOT - RIGHT HAND
2	WALL PIVOT - LEFT HAND
3	INTERMEDIATE CARRIER
4	END CARRIER - RIGHT HAND
5	END CARRIER - LEFT HAND
6	OFFSET HINGE
7	STRAIGHT HINGE

Uni-directional - Right- 2R

USE THIS DIAGRAM IN CONJUNCTION WITH THE PROVIDED INSTALLATION INSTRUCTIONS TO DETERMINE HINGE AND PANEL LOCATIONS

2R



HINGE MATRIX

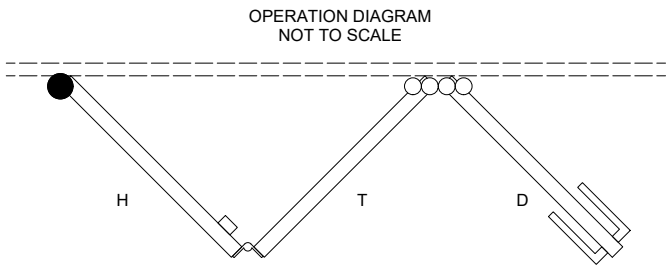
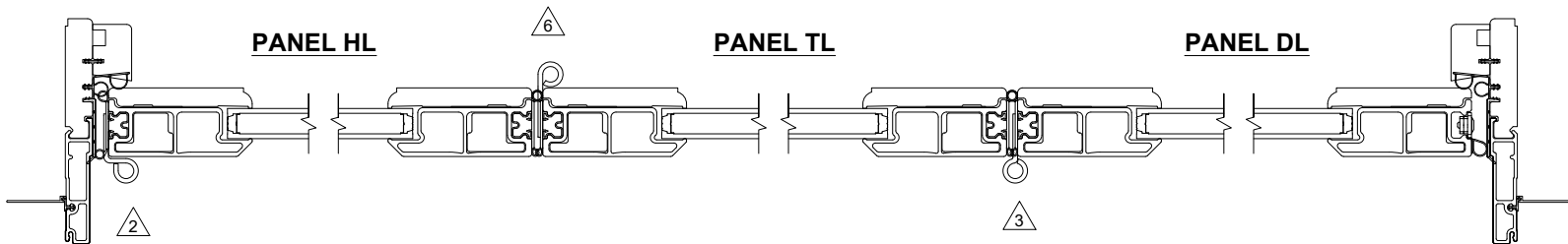
HINGE #	HINGE DESCRIPTION
1	WALL PIVOT - RIGHT HAND
2	WALL PIVOT - LEFT HAND
3	INTERMEDIATE CARRIER
4	END CARRIER - RIGHT HAND
5	END CARRIER - LEFT HAND
6	OFFSET HINGE
7	STRAIGHT HINGE









19916409

Uni-directional - Left - 3L

USE THIS DIAGRAM IN CONJUNCTION WITH THE PROVIDED INSTALLATION INSTRUCTIONS TO DETERMINE HINGE AND PANEL LOCATIONS

3L



-  PANEL
-  PIVOT
-  INTERMEDIATE CARRIER
-  END CARRIER
-  SHOOT BOLT HANDLE
-  HANDLE, PRIMARY
-  HANDLE, SECONDARY
-  HINGE

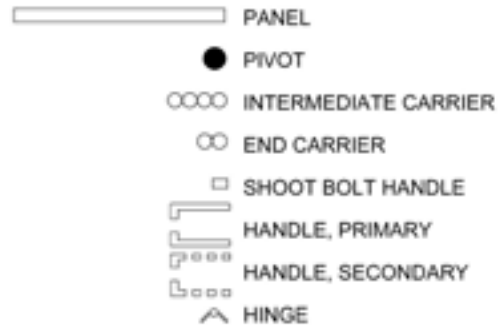
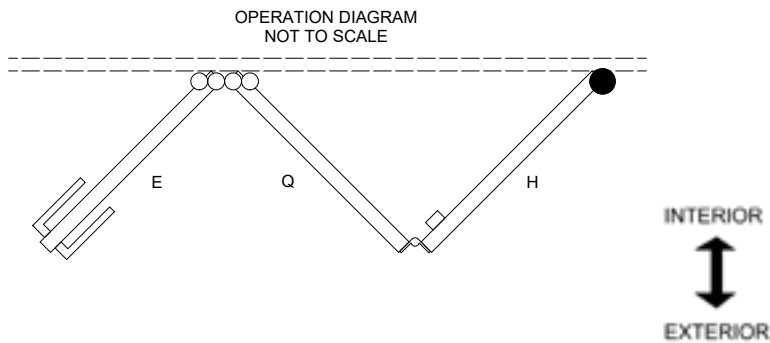
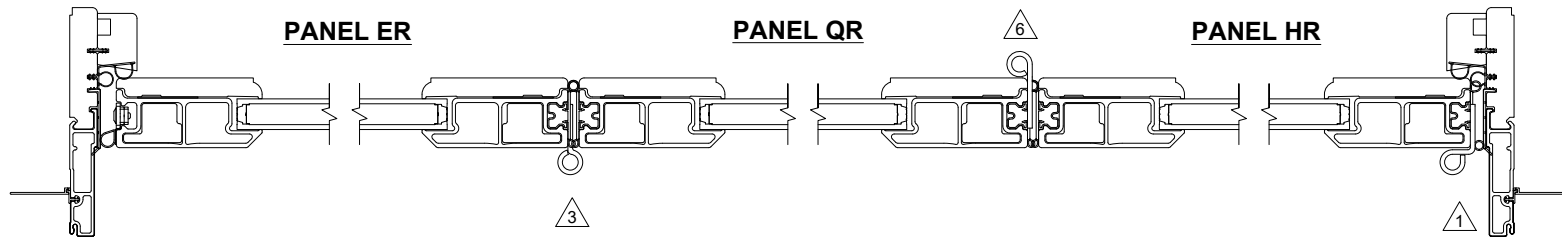
HINGE MATRIX	
HINGE #	HINGE DESCRIPTION
1	WALL PIVOT - RIGHT HAND
2	WALL PIVOT - LEFT HAND
3	INTERMEDIATE CARRIER
4	END CARRIER - RIGHT HAND
5	END CARRIER - LEFT HAND
6	OFFSET HINGE
7	STRAIGHT HINGE

19916410

Uni-directional - Right - 3R

USE THIS DIAGRAM IN CONJUNCTION WITH THE PROVIDED INSTALLATION INSTRUCTIONS TO DETERMINE HINGE AND PANEL LOCATIONS

3R



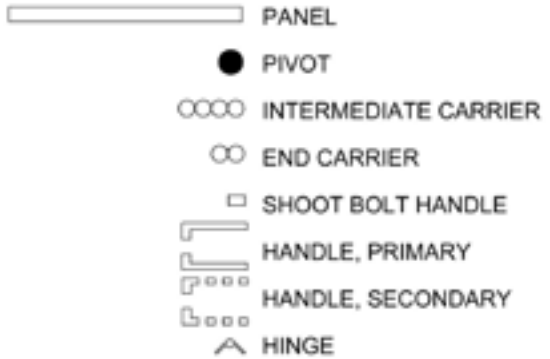
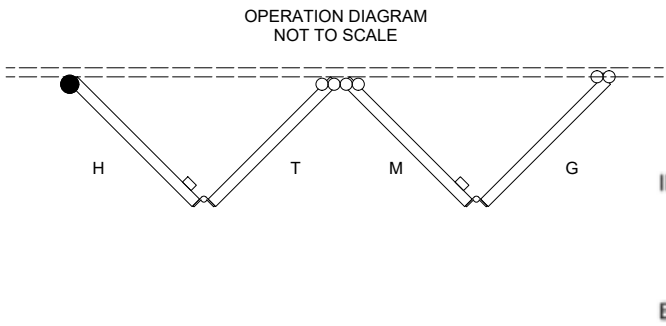
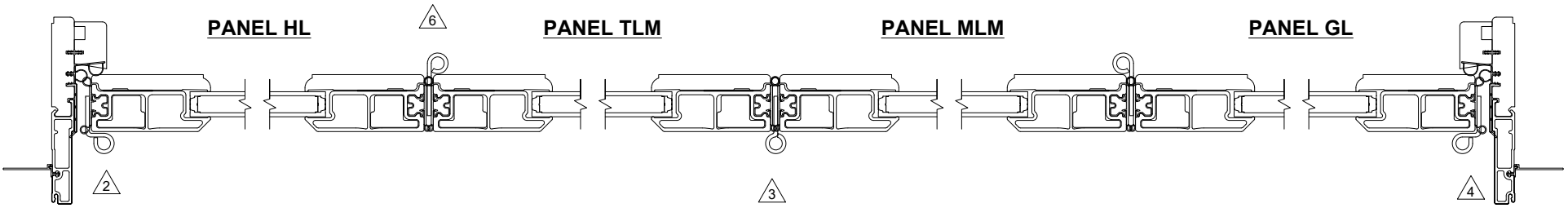
HINGE MATRIX	
HINGE #	HINGE DESCRIPTION
1	WALL PIVOT - RIGHT HAND
2	WALL PIVOT - LEFT HAND
3	INTERMEDIATE CARRIER
4	END CARRIER - RIGHT HAND
5	END CARRIER - LEFT HAND
6	OFFSET HINGE
7	STRAIGHT HINGE

19916411

Uni-directional - Left - 4L

USE THIS DIAGRAM IN CONJUNCTION WITH THE PROVIDED INSTALLATION INSTRUCTIONS TO DETERMINE HINGE AND PANEL LOCATIONS

4L



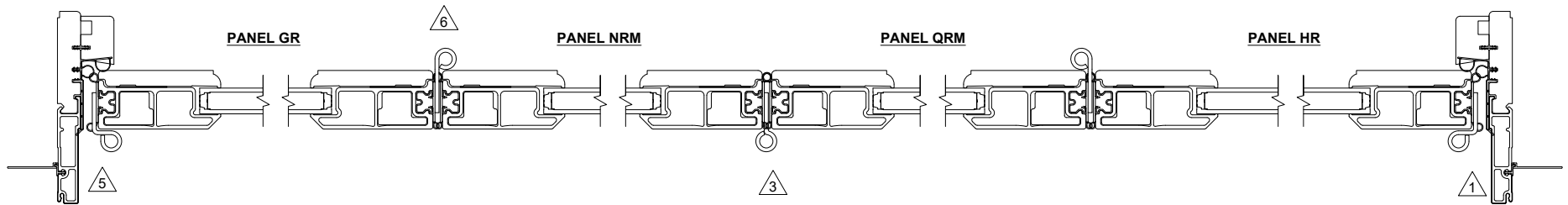
HINGE MATRIX	
HINGE #	HINGE DESCRIPTION
1	WALL PIVOT - RIGHT HAND
2	WALL PIVOT - LEFT HAND
3	INTERMEDIATE CARRIER
4	END CARRIER - RIGHT HAND
5	END CARRIER - LEFT HAND
6	OFFSET HINGE
7	STRAIGHT HINGE

19916412

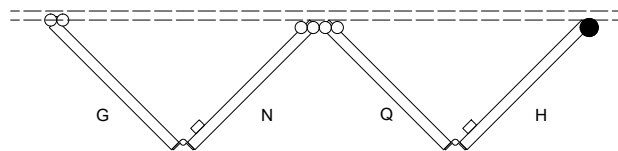
Uni-directional - Right - 4R

USE THIS DIAGRAM IN CONJUNCTION WITH THE PROVIDED INSTALLATION INSTRUCTIONS TO DETERMINE HINGE AND PANEL LOCATIONS

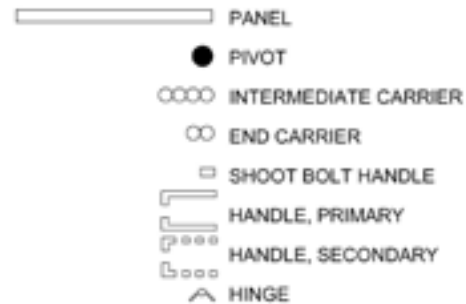
4R



OPERATION DIAGRAM
NOT TO SCALE



INTERIOR
↕
EXTERIOR



HINGE MATRIX

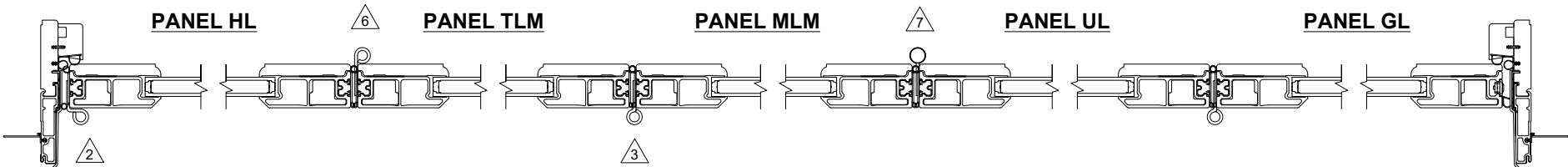
HINGE #	HINGE DESCRIPTION
1	WALL PIVOT - RIGHT HAND
2	WALL PIVOT - LEFT HAND
3	INTERMEDIATE CARRIER
4	END CARRIER - RIGHT HAND
5	END CARRIER - LEFT HAND
6	OFFSET HINGE
7	STRAIGHT HINGE

19916413

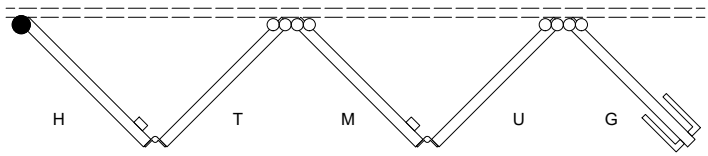
Uni-directional - Left - 5L

USE THIS DIAGRAM IN CONJUNCTION WITH THE PROVIDED INSTALLATION INSTRUCTIONS TO DETERMINE HINGE AND PANEL LOCATIONS

5L



OPERATION DIAGRAM
NOT TO SCALE



INTERIOR
↕
EXTERIOR

- PANEL
- PIVOT
- INTERMEDIATE CARRIER
- END CARRIER
- SHOOT BOLT HANDLE
- ┌ HANDLE, PRIMARY
- └ HANDLE, SECONDARY
- △ HINGE

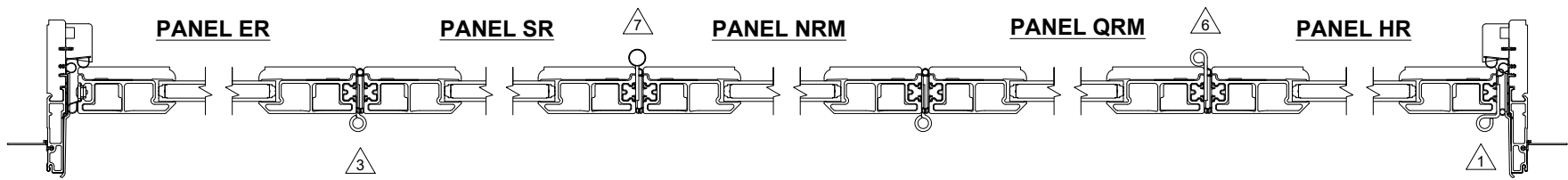
HINGE MATRIX	
HINGE #	HINGE DESCRIPTION
1	WALL PIVOT - RIGHT HAND
2	WALL PIVOT - LEFT HAND
3	INTERMEDIATE CARRIER
4	END CARRIER - RIGHT HAND
5	END CARRIER - LEFT HAND
6	OFFSET HINGE
7	STRAIGHT HINGE

19916414

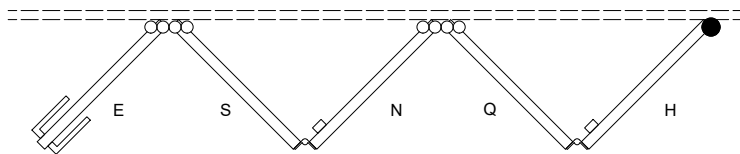
Uni-directional - Right - 5R

USE THIS DIAGRAM IN CONJUNCTION WITH THE PROVIDED INSTALLATION INSTRUCTIONS TO DETERMINE HINGE AND PANEL LOCATIONS

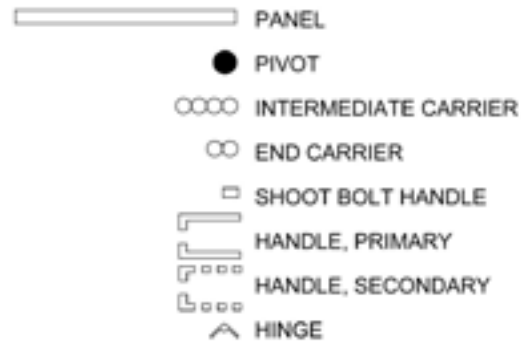
5R



OPERATION DIAGRAM
NOT TO SCALE



INTERIOR
↕
EXTERIOR



HINGE MATRIX

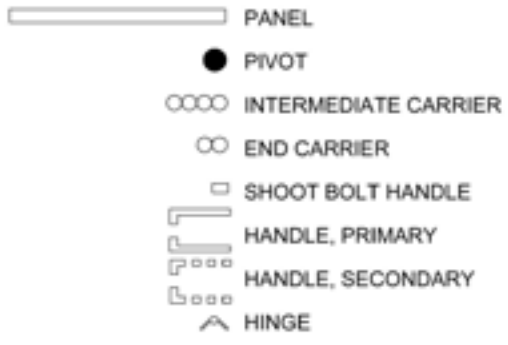
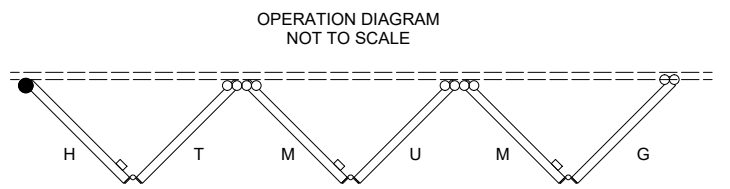
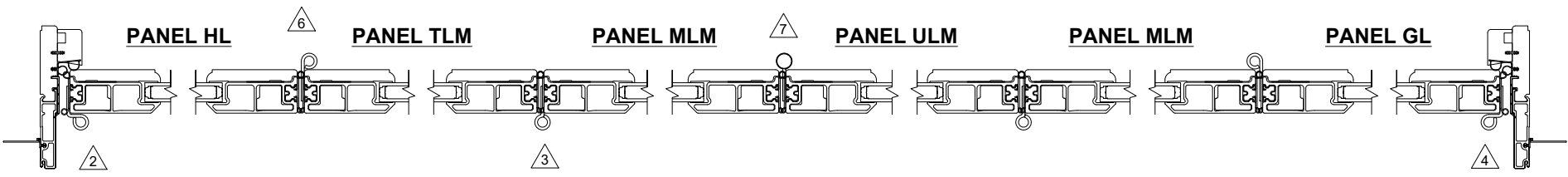
HINGE #	HINGE DESCRIPTION
1	WALL PIVOT - RIGHT HAND
2	WALL PIVOT - LEFT HAND
3	INTERMEDIATE CARRIER
4	END CARRIER - RIGHT HAND
5	END CARRIER - LEFT HAND
6	OFFSET HINGE
7	STRAIGHT HINGE

19916415

Uni-directional - Left - 6L

USE THIS DIAGRAM IN CONJUNCTION WITH THE PROVIDED INSTALLATION INSTRUCTIONS TO DETERMINE HINGE AND PANEL LOCATIONS

6L



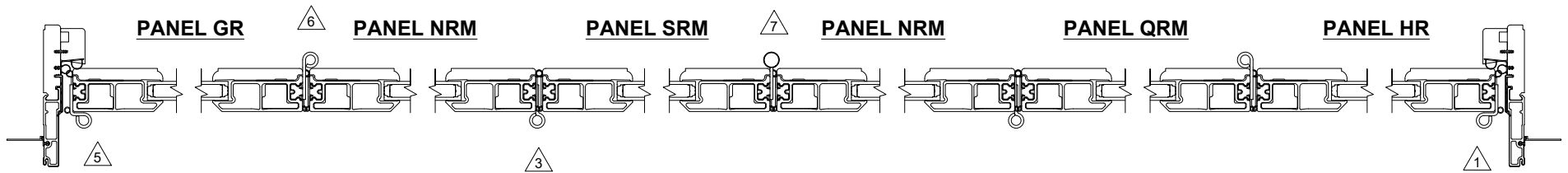
HINGE MATRIX	
HINGE #	HINGE DESCRIPTION
1	WALL PIVOT - RIGHT HAND
2	WALL PIVOT - LEFT HAND
3	INTERMEDIATE CARRIER
4	END CARRIER - RIGHT HAND
5	END CARRIER - LEFT HAND
6	OFFSET HINGE
7	STRAIGHT HINGE

19916416

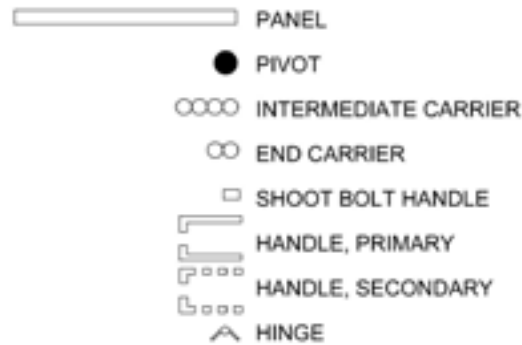
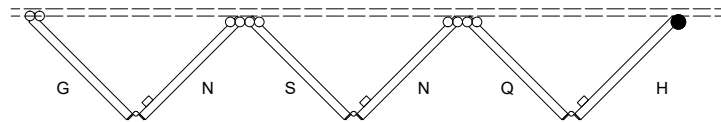
Uni-directional - Right - 6R

USE THIS DIAGRAM IN CONJUNCTION WITH THE PROVIDED INSTALLATION INSTRUCTIONS TO DETERMINE HINGE AND PANEL LOCATIONS

6R



OPERATION DIAGRAM
NOT TO SCALE



HINGE MATRIX

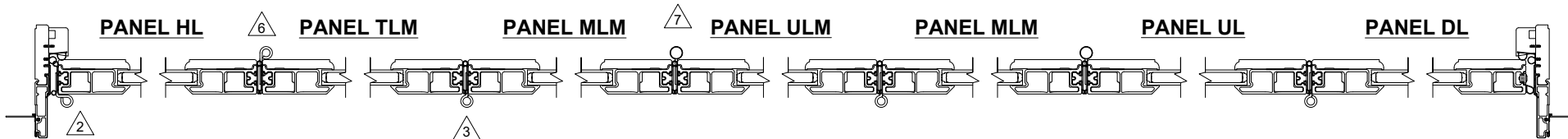
HINGE #	HINGE DESCRIPTION
1	WALL PIVOT - RIGHT HAND
2	WALL PIVOT - LEFT HAND
3	INTERMEDIATE CARRIER
4	END CARRIER - RIGHT HAND
5	END CARRIER - LEFT HAND
6	OFFSET HINGE
7	STRAIGHT HINGE

19916417

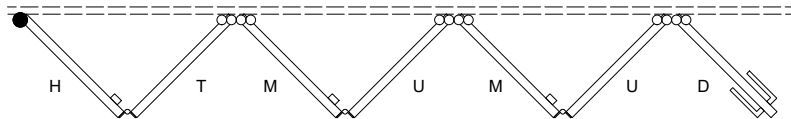
Uni-directional - Left - 7L

USE THIS DIAGRAM IN CONJUNCTION WITH THE PROVIDED INSTALLATION INSTRUCTIONS TO DETERMINE HINGE AND PANEL LOCATIONS

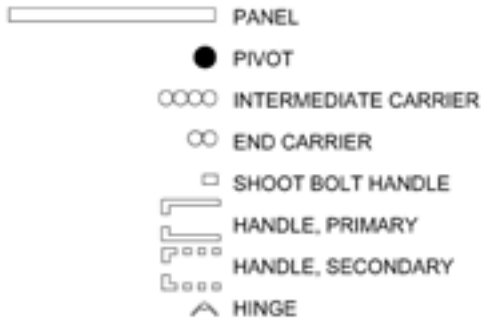
7L



OPERATION DIAGRAM
NOT TO SCALE



INTERIOR
↕
EXTERIOR



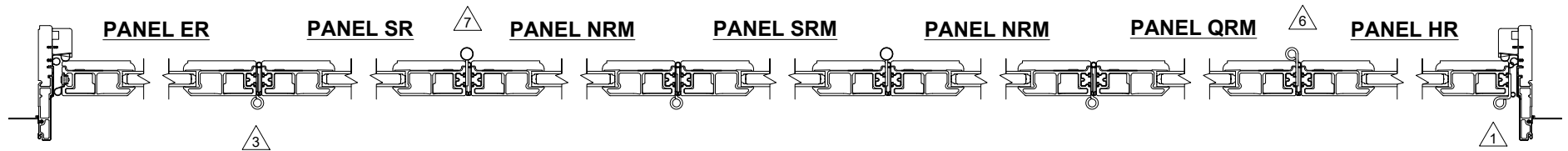
HINGE MATRIX	
HINGE #	HINGE DESCRIPTION
1	WALL PIVOT - RIGHT HAND
2	WALL PIVOT - LEFT HAND
3	INTERMEDIATE CARRIER
4	END CARRIER - RIGHT HAND
5	END CARRIER - LEFT HAND
6	OFFSET HINGE
7	STRAIGHT HINGE

19916418

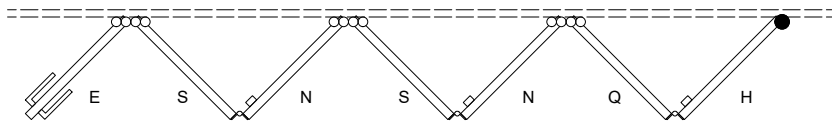
Uni-directional - Right - 7R

USE THIS DIAGRAM IN CONJUNCTION WITH THE PROVIDED INSTALLATION INSTRUCTIONS TO DETERMINE HINGE AND PANEL LOCATIONS

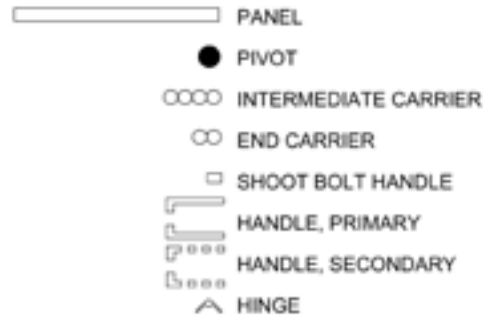
7R



OPERATION DIAGRAM
NOT TO SCALE



INTERIOR
↕
EXTERIOR



HINGE MATRIX

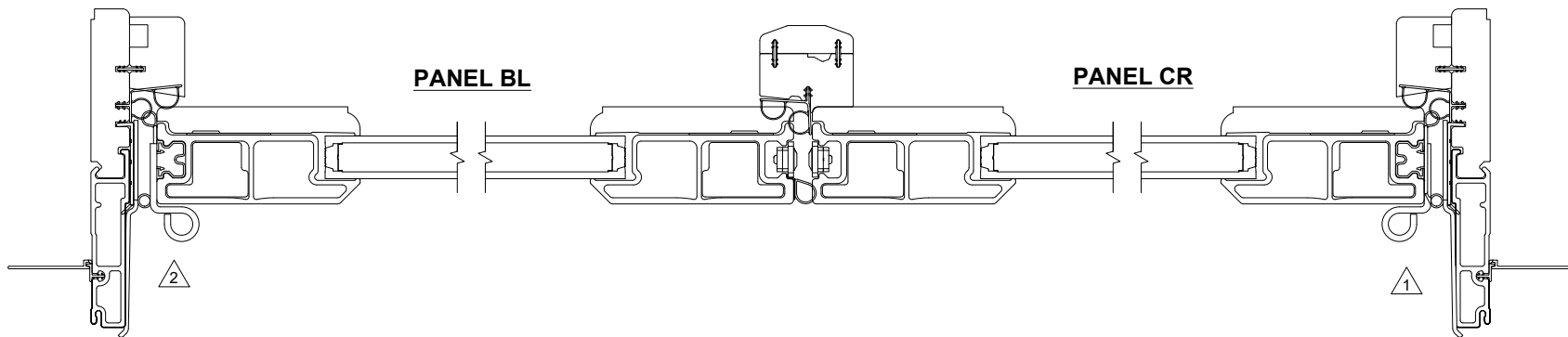
HINGE #	HINGE DESCRIPTION
1	WALL PIVOT - RIGHT HAND
2	WALL PIVOT - LEFT HAND
3	INTERMEDIATE CARRIER
4	END CARRIER - RIGHT HAND
5	END CARRIER - LEFT HAND
6	OFFSET HINGE
7	STRAIGHT HINGE

19916419

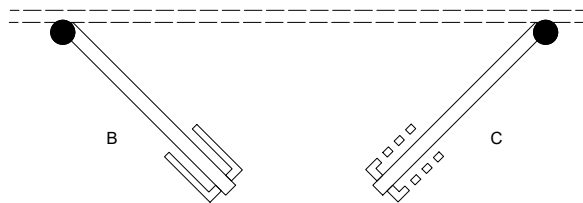
Uni-directional (equal) - Operating Panel - 1L1R (LH)

USE THIS DIAGRAM IN CONJUNCTION WITH THE PROVIDED INSTALLATION INSTRUCTIONS TO DETERMINE HINGE AND PANEL LOCATIONS

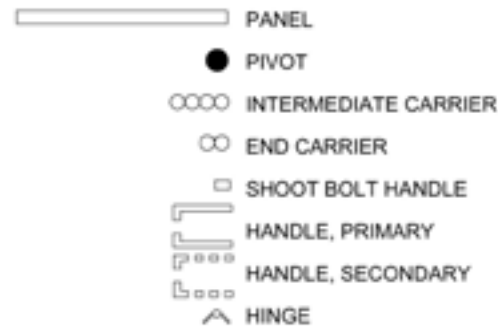
1L1R (LH)



OPERATION DIAGRAM
NOT TO SCALE



INTERIOR
↑
↓
EXTERIOR



HINGE MATRIX

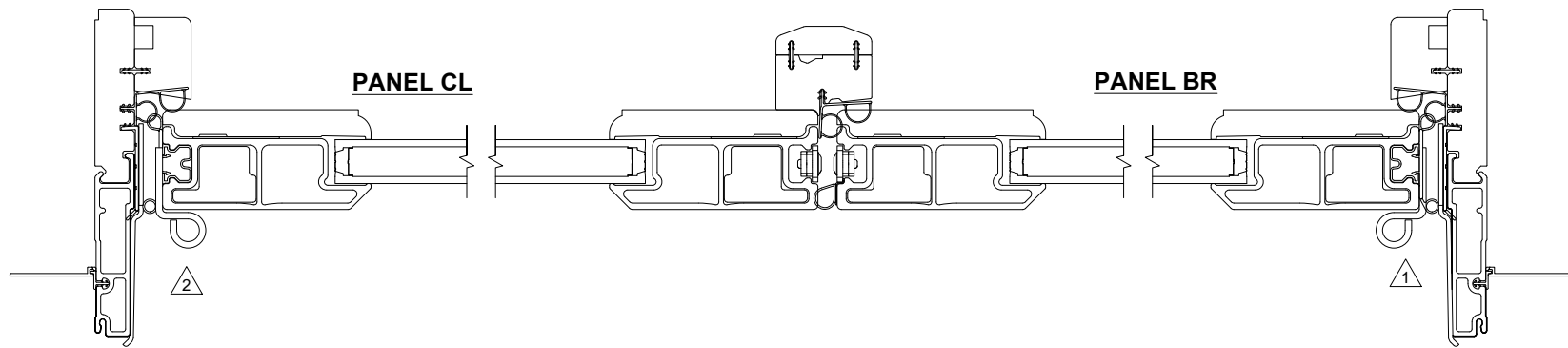
HINGE #	HINGE DESCRIPTION
1	WALL PIVOT - RIGHT HAND
2	WALL PIVOT - LEFT HAND
3	INTERMEDIATE CARRIER
4	END CARRIER - RIGHT HAND
5	END CARRIER - LEFT HAND
6	OFFSET HINGE
7	STRAIGHT HINGE

19916420

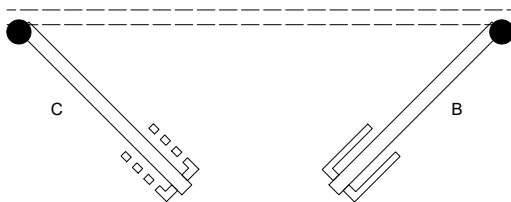
Uni-directional (equal) - Operating Panel - 1L1R (RH)

USE THIS DIAGRAM IN CONJUNCTION WITH THE PROVIDED INSTALLATION INSTRUCTIONS TO DETERMINE HINGE AND PANEL LOCATIONS

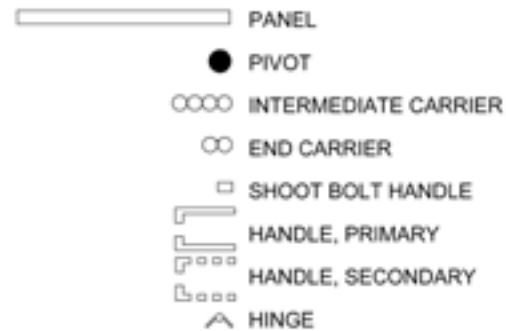
1L1R (RH)



OPERATION DIAGRAM
NOT TO SCALE



INTERIOR
↕
EXTERIOR



HINGE MATRIX

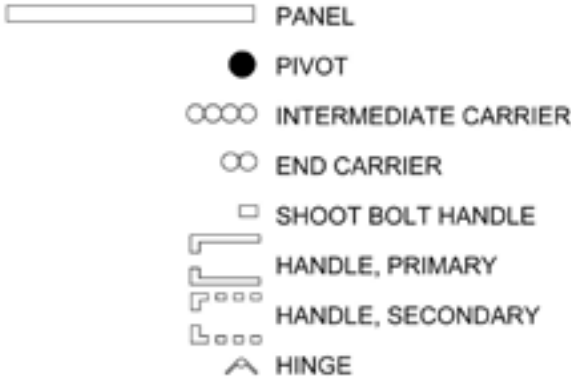
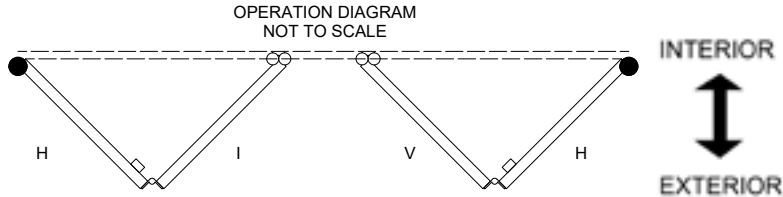
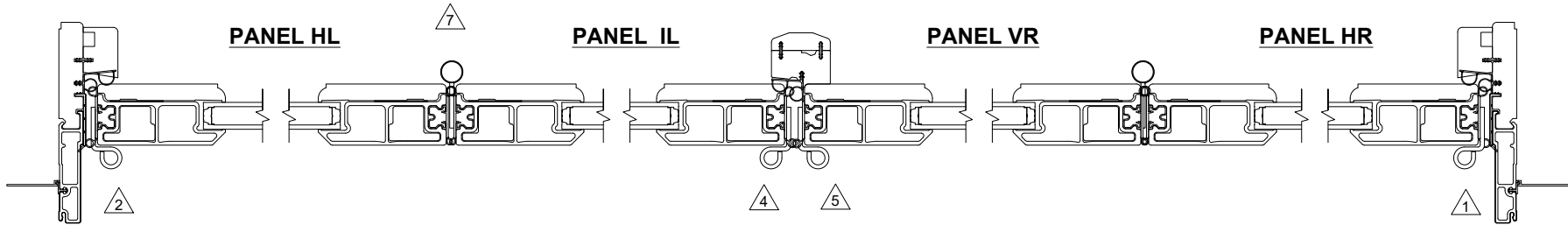
HINGE #	HINGE DESCRIPTION
1	WALL PIVOT - RIGHT HAND
2	WALL PIVOT - LEFT HAND
3	INTERMEDIATE CARRIER
4	END CARRIER - RIGHT HAND
5	END CARRIER - LEFT HAND
6	OFFSET HINGE
7	STRAIGHT HINGE

19916421

Bi-parting (equal) - 2L2R

USE THIS DIAGRAM IN CONJUNCTION WITH THE PROVIDED INSTALLATION INSTRUCTIONS TO DETERMINE HINGE AND PANEL LOCATIONS

2L2R



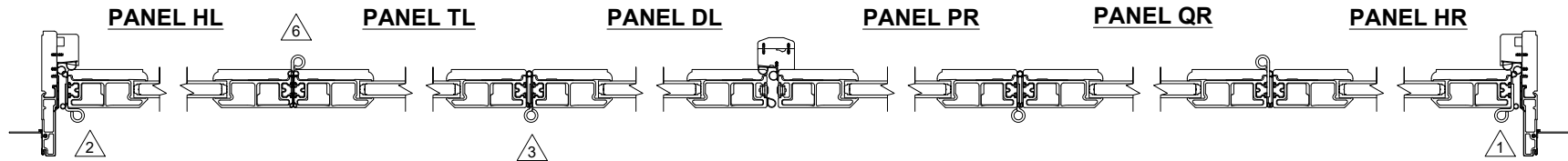
HINGE MATRIX	
HINGE #	HINGE DESCRIPTION
1	WALL PIVOT - RIGHT HAND
2	WALL PIVOT - LEFT HAND
3	INTERMEDIATE CARRIER
4	END CARRIER - RIGHT HAND
5	END CARRIER - LEFT HAND
6	OFFSET HINGE
7	STRAIGHT HINGE

19916426

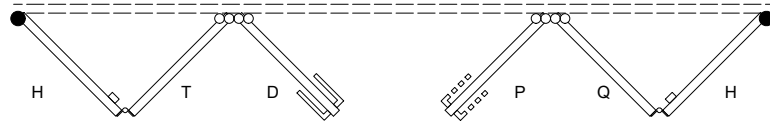
Bi-parting (equal) - 3L3R (LH)

USE THIS DIAGRAM IN CONJUNCTION WITH THE PROVIDED INSTALLATION INSTRUCTIONS TO DETERMINE HINGE AND PANEL LOCATIONS

3L3R (LH)



OPERATION DIAGRAM
NOT TO SCALE



INTERIOR
↕
EXTERIOR

- PANEL
- PIVOT
- INTERMEDIATE CARRIER
- END CARRIER
- SHOOT BOLT HANDLE
- ┌ HANDLE, PRIMARY
- └ HANDLE, SECONDARY
- △ HINGE

HINGE MATRIX

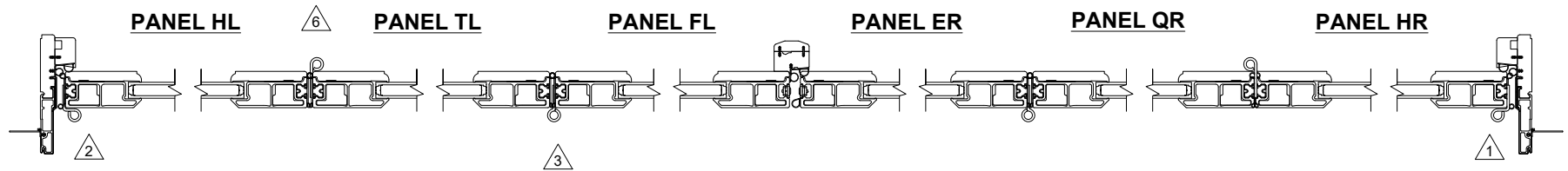
HINGE #	HINGE DESCRIPTION
1	WALL PIVOT - RIGHT HAND
2	WALL PIVOT - LEFT HAND
3	INTERMEDIATE CARRIER
4	END CARRIER - RIGHT HAND
5	END CARRIER - LEFT HAND
6	OFFSET HINGE
7	STRAIGHT HINGE

19916429

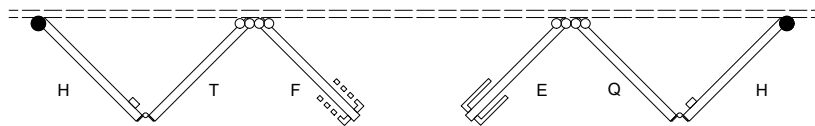
Bi-parting (equal) - 3L3R (RH)

USE THIS DIAGRAM IN CONJUNCTION WITH THE PROVIDED INSTALLATION INSTRUCTIONS TO DETERMINE HINGE AND PANEL LOCATIONS

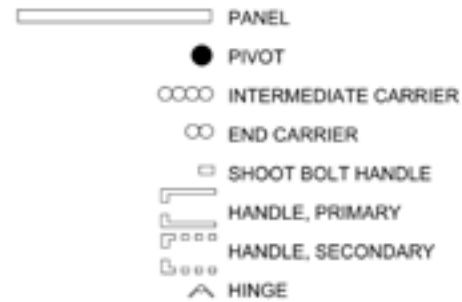
3L3R (RH)



OPERATION DIAGRAM
NOT TO SCALE



INTERIOR
↑
↓
EXTERIOR



HINGE MATRIX

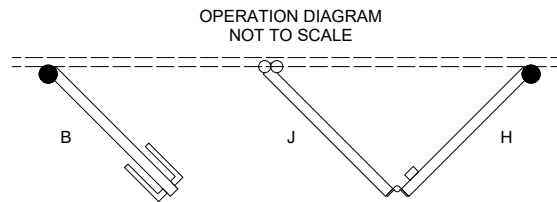
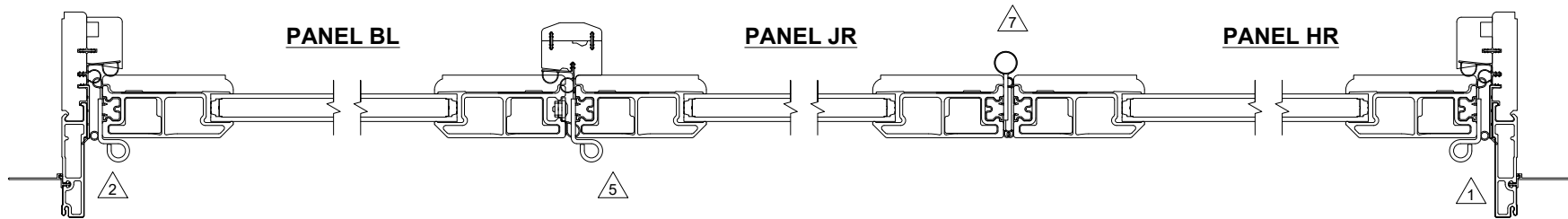
HINGE #	HINGE DESCRIPTION
1	WALL PIVOT - RIGHT HAND
2	WALL PIVOT - LEFT HAND
3	INTERMEDIATE CARRIER
4	END CARRIER - RIGHT HAND
5	END CARRIER - LEFT HAND
6	OFFSET HINGE
7	STRAIGHT HINGE

19916430

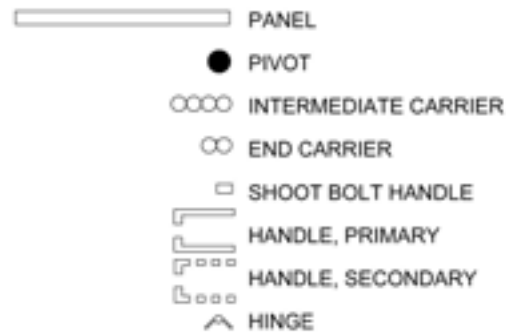
Uni-directional (unequal) - Operating Panel - 1L2R

USE THIS DIAGRAM IN CONJUNCTION WITH THE PROVIDED INSTALLATION INSTRUCTIONS TO DETERMINE HINGE AND PANEL LOCATIONS

1L2R



INTERIOR
↕
EXTERIOR



HINGE MATRIX

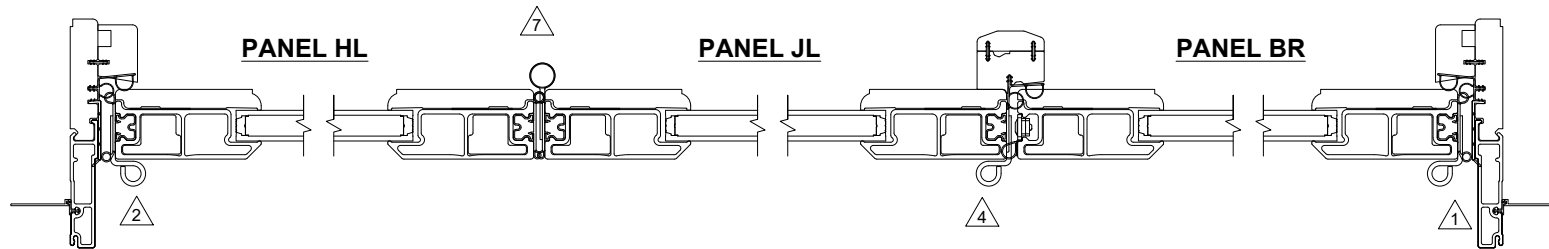
HINGE #	HINGE DESCRIPTION
1	WALL PIVOT - RIGHT HAND
2	WALL PIVOT - LEFT HAND
3	INTERMEDIATE CARRIER
4	END CARRIER - RIGHT HAND
5	END CARRIER - LEFT HAND
6	OFFSET HINGE
7	STRAIGHT HINGE

19916423

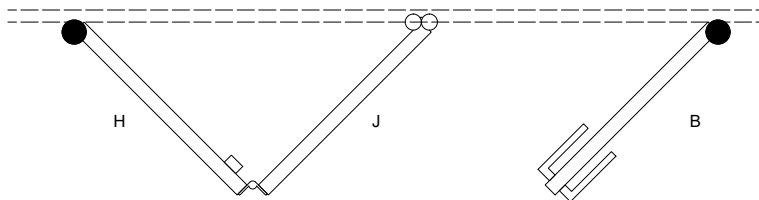
Uni-directional (unequal) - Operating Panel - 2L1R

USE THIS DIAGRAM IN CONJUNCTION WITH THE PROVIDED INSTALLATION INSTRUCTIONS TO DETERMINE HINGE AND PANEL LOCATIONS

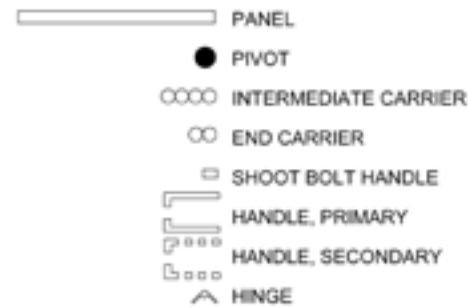
2L1R



OPERATION DIAGRAM
NOT TO SCALE



INTERIOR
↑
↓
EXTERIOR



HINGE MATRIX

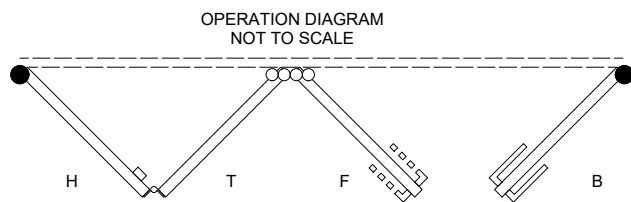
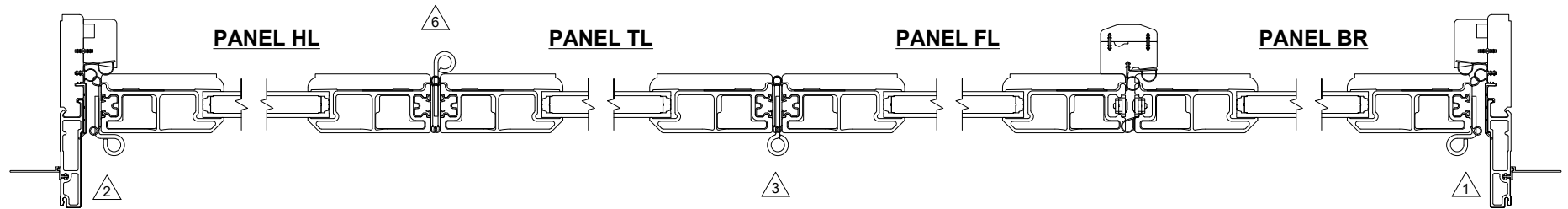
HINGE #	HINGE DESCRIPTION
1	WALL PIVOT - RIGHT HAND
2	WALL PIVOT - LEFT HAND
3	INTERMEDIATE CARRIER
4	END CARRIER - RIGHT HAND
5	END CARRIER - LEFT HAND
6	OFFSET HINGE
7	STRAIGHT HINGE

19916422

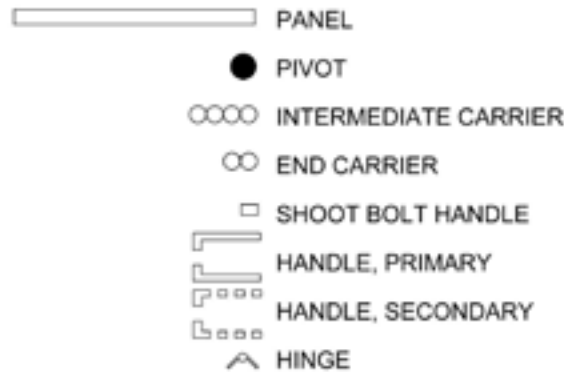
Uni-directional (unequal) - Operating Panel - 3L1R

USE THIS DIAGRAM IN CONJUNCTION WITH THE PROVIDED INSTALLATION INSTRUCTIONS TO DETERMINE HINGE AND PANEL LOCATIONS

3L1R



INTERIOR
 ↑
 ↓
 EXTERIOR



HINGE MATRIX

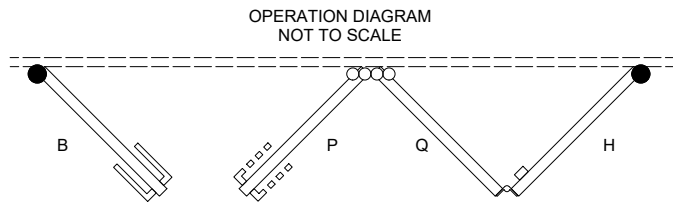
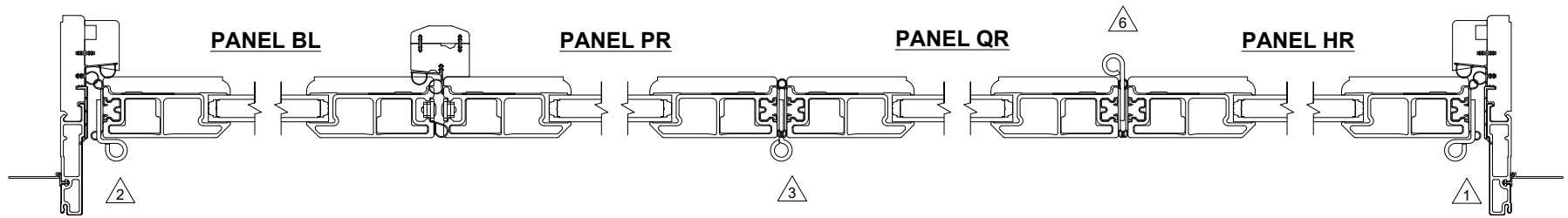
HINGE #	HINGE DESCRIPTION
1	WALL PIVOT - RIGHT HAND
2	WALL PIVOT - LEFT HAND
3	INTERMEDIATE CARRIER
4	END CARRIER - RIGHT HAND
5	END CARRIER - LEFT HAND
6	OFFSET HINGE
7	STRAIGHT HINGE

19916424

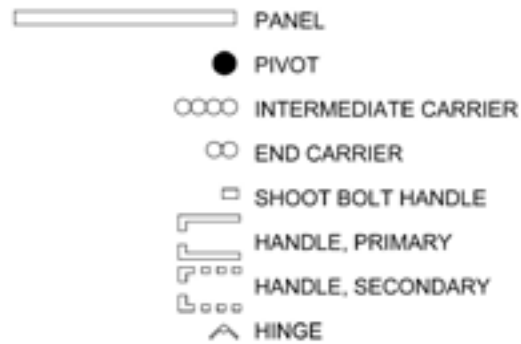
Uni-directional (unequal) - Operating Panel - 1L3R

USE THIS DIAGRAM IN CONJUNCTION WITH THE PROVIDED INSTALLATION INSTRUCTIONS TO DETERMINE HINGE AND PANEL LOCATIONS

1L3R



INTERIOR
↕
EXTERIOR



HINGE MATRIX

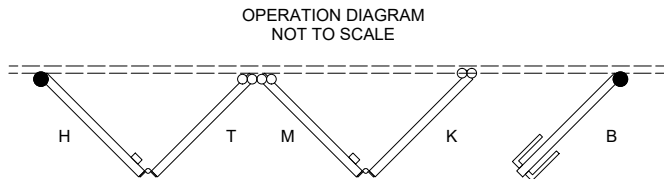
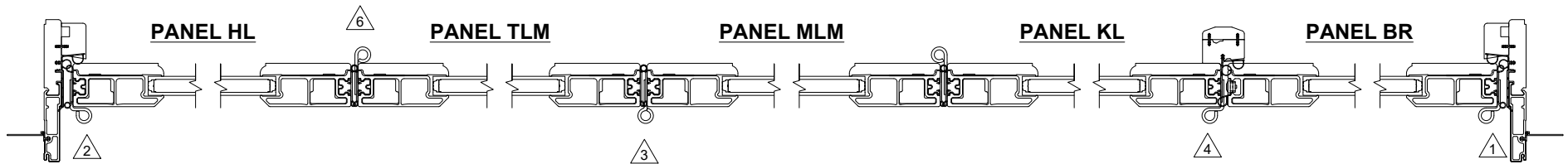
HINGE #	HINGE DESCRIPTION
1	WALL PIVOT - RIGHT HAND
2	WALL PIVOT - LEFT HAND
3	INTERMEDIATE CARRIER
4	END CARRIER - RIGHT HAND
5	END CARRIER - LEFT HAND
6	OFFSET HINGE
7	STRAIGHT HINGE

19916425

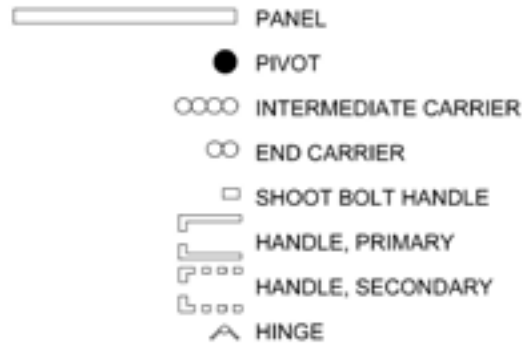
Bi-parting (unequal) - Operating Panel - 4L1R

USE THIS DIAGRAM IN CONJUNCTION WITH THE PROVIDED INSTALLATION INSTRUCTIONS TO DETERMINE HINGE AND PANEL LOCATIONS

4L1R



INTERIOR
↕
EXTERIOR



HINGE MATRIX

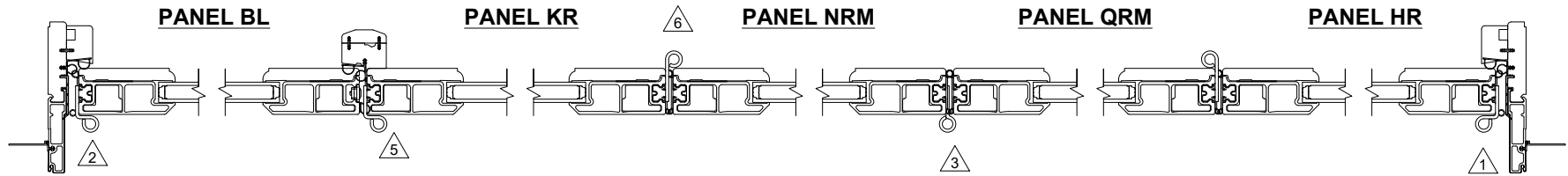
HINGE #	HINGE DESCRIPTION
1	WALL PIVOT - RIGHT HAND
2	WALL PIVOT - LEFT HAND
3	INTERMEDIATE CARRIER
4	END CARRIER - RIGHT HAND
5	END CARRIER - LEFT HAND
6	OFFSET HINGE
7	STRAIGHT HINGE

19916427

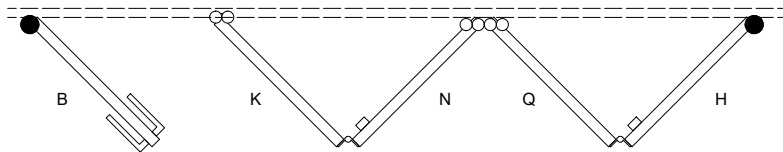
Bi-parting (unequal) - Operating Panel - 1L4R

USE THIS DIAGRAM IN CONJUNCTION WITH THE PROVIDED INSTALLATION INSTRUCTIONS TO DETERMINE HINGE AND PANEL LOCATIONS

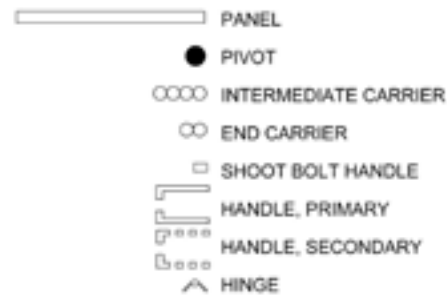
1L4R



OPERATION DIAGRAM
NOT TO SCALE



INTERIOR
↕
EXTERIOR



HINGE MATRIX

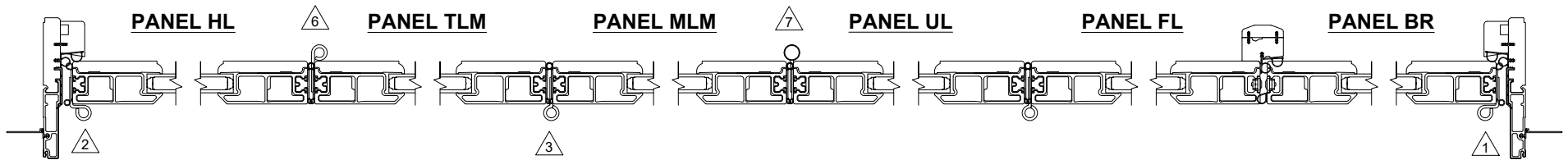
HINGE #	HINGE DESCRIPTION
1	WALL PIVOT - RIGHT HAND
2	WALL PIVOT - LEFT HAND
3	INTERMEDIATE CARRIER
4	END CARRIER - RIGHT HAND
5	END CARRIER - LEFT HAND
6	OFFSET HINGE
7	STRAIGHT HINGE

19916428

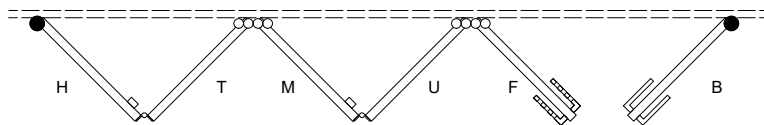
Bi-parting (unequal) - Operating Panel - 5L1R









USE THIS DIAGRAM IN CONJUNCTION WITH THE PROVIDED INSTALLATION INSTRUCTIONS TO DETERMINE HINGE AND PANEL LOCATIONS

5L1R



OPERATION DIAGRAM
NOT TO SCALE



-  PANEL
-  PIVOT
-  INTERMEDIATE CARRIER
-  END CARRIER
-  SHOOT BOLT HANDLE
-  HANDLE, PRIMARY
-  HANDLE, SECONDARY
-  HINGE

HINGE MATRIX

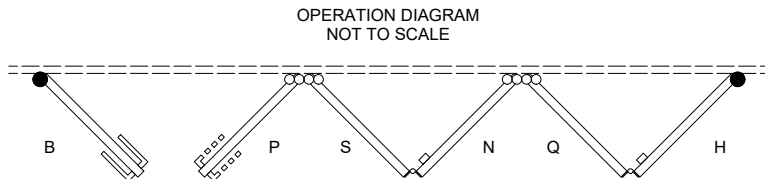
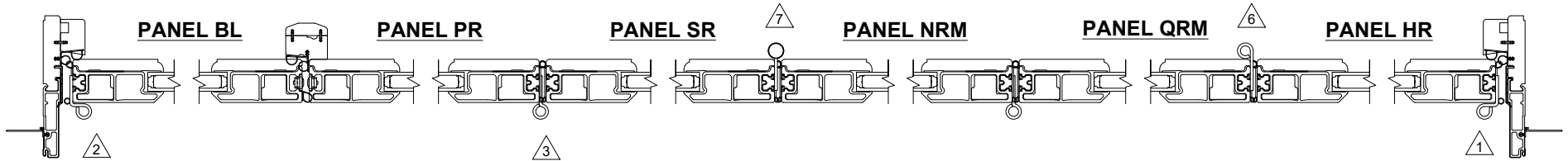
HINGE #	HINGE DESCRIPTION
1	WALL PIVOT - RIGHT HAND
2	WALL PIVOT - LEFT HAND
3	INTERMEDIATE CARRIER
4	END CARRIER - RIGHT HAND
5	END CARRIER - LEFT HAND
6	OFFSET HINGE
7	STRAIGHT HINGE

19916431

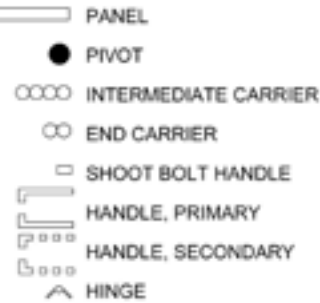
Bi-parting (unequal) - Operating Panel - 1L5R

USE THIS DIAGRAM IN CONJUNCTION WITH THE PROVIDED INSTALLATION INSTRUCTIONS TO DETERMINE HINGE AND PANEL LOCATIONS

1L5R



INTERIOR
↕
EXTERIOR



HINGE MATRIX

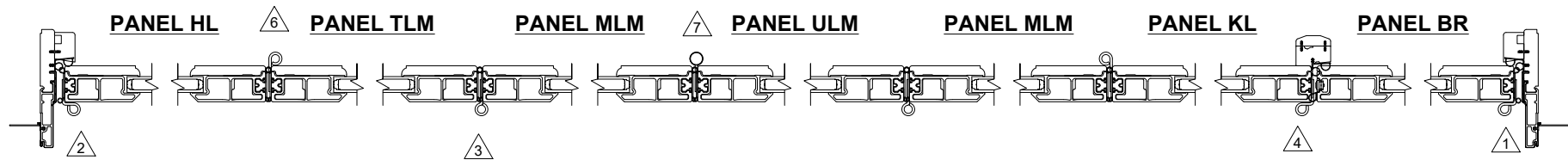
HINGE #	HINGE DESCRIPTION
1	WALL PIVOT - RIGHT HAND
2	WALL PIVOT - LEFT HAND
3	INTERMEDIATE CARRIER
4	END CARRIER - RIGHT HAND
5	END CARRIER - LEFT HAND
6	OFFSET HINGE
7	STRAIGHT HINGE

19916432

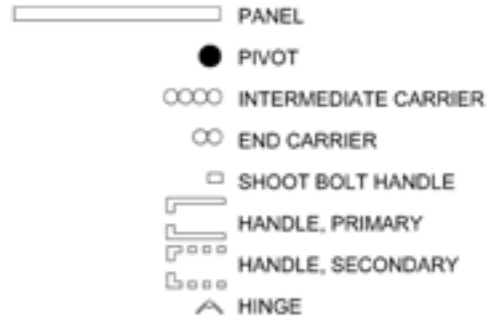
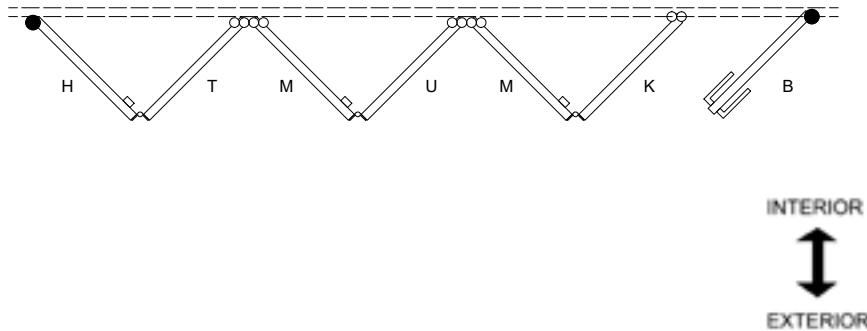
Bi-parting (unequal) - Operating Panel - 6L1R

USE THIS DIAGRAM IN CONJUNCTION WITH THE PROVIDED INSTALLATION INSTRUCTIONS TO DETERMINE HINGE AND PANEL LOCATIONS

6L1R



OPERATION DIAGRAM
NOT TO SCALE



HINGE MATRIX

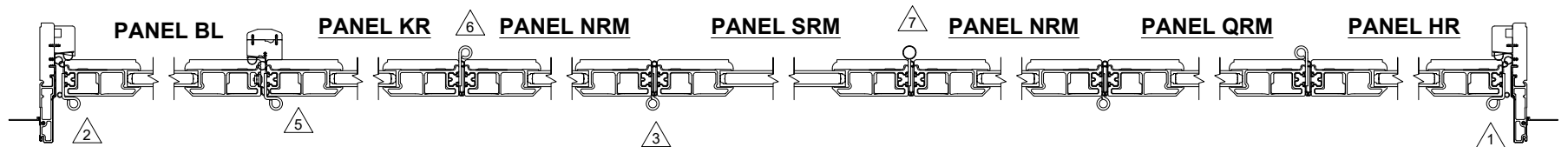
HINGE #	HINGE DESCRIPTION
1	WALL PIVOT - RIGHT HAND
2	WALL PIVOT - LEFT HAND
3	INTERMEDIATE CARRIER
4	END CARRIER - RIGHT HAND
5	END CARRIER - LEFT HAND
6	OFFSET HINGE
7	STRAIGHT HINGE

19916433

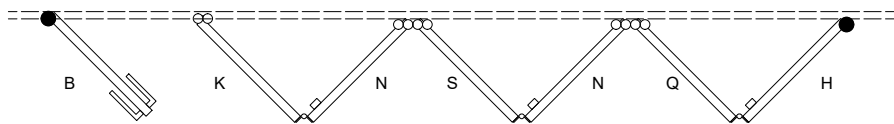
Bi-parting (unequal) - Operating Panel - 1L6R

USE THIS DIAGRAM IN CONJUNCTION WITH THE PROVIDED INSTALLATION INSTRUCTIONS TO DETERMINE HINGE AND PANEL LOCATIONS

1L6R



OPERATION DIAGRAM
NOT TO SCALE



INTERIOR
↑
↓
EXTERIOR

- PANEL
- PIVOT
- ○ ○ ○ INTERMEDIATE CARRIER
- ○ END CARRIER
- SHOOT BOLT HANDLE
- ┌ ┐ HANDLE, PRIMARY
- └ ┘ HANDLE, SECONDARY
- △ HINGE

HINGE MATRIX

HINGE #	HINGE DESCRIPTION
1	WALL PIVOT - RIGHT HAND
2	WALL PIVOT - LEFT HAND
3	INTERMEDIATE CARRIER
4	END CARRIER - RIGHT HAND
5	END CARRIER - LEFT HAND
6	OFFSET HINGE
7	STRAIGHT HINGE

19916434