

## Before You Begin

---

### IMPORTANT

Marvin Ultimate Direct Glaze Corner Window is not load-bearing and should not be installed in any manner that places the unit under load from the wall system. Care must be taken with the design of the structure surrounding these units.

---

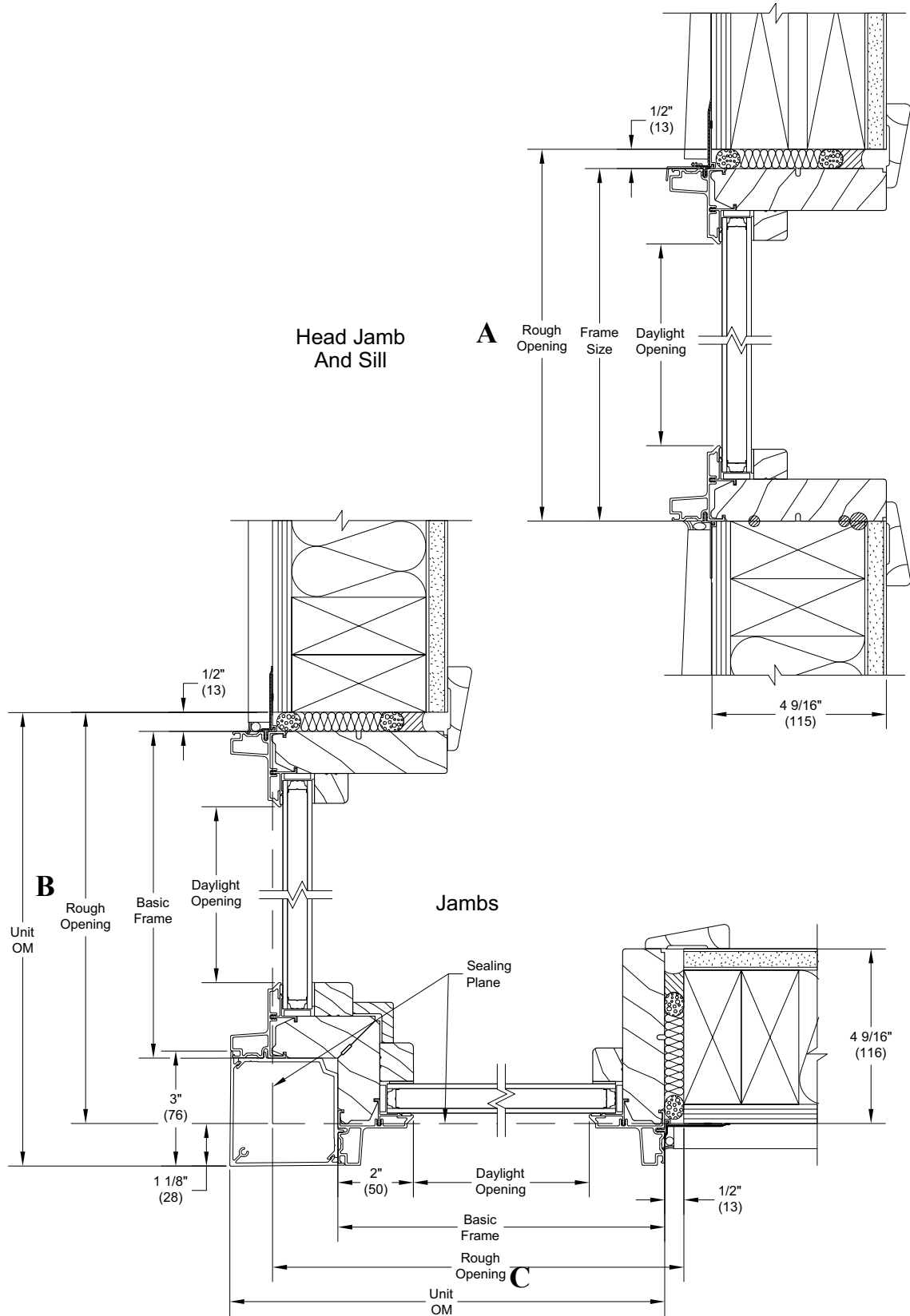
- These measuring instructions cover the following product types: Ultimate Direct Glaze Corner Window.
- The Marvin Clad Direct Glaze Corner Window may be ordered by: Rough Opening (RO), Masonry Opening (MO), or Frame Size (FS). See the definitions below of these measurements.

### Measurement Definitions

1. **Rough Opening (RO)** is a measurement of the wall opening that provides clearance on three sides of the window for proper installation, insulating, and shimming. **RO Height** = FS Height + ½". **RO Width** = Basic Frame Width + 2 ¼" for each leg (side).
  - Separate RO width measurements are required for each leg (side) of the corner window.
  - Include the exterior sheathing in the RO Width measurement.
  - In some instances, this measurement may need to account for rigid insulation if the nailing fin (sealing plane) is to the exterior of the insulation.
2. **Masonry Opening (MO)** is 2" wider than each FS Width (i.e. FS<sub>1</sub> and FS<sub>2</sub>) and ¼" higher than FS Height. **MO Height** = FS Height + ¼", or Outside of Exterior Casing + ¼". **MO Width** = FS Width + ¼", or Outside of Exterior Casing + ¼".

# Marvin Ultimate Direct Glaze Corner Window Section Details

- Measurement A:** Corner Window RO Height
- Measurement B:** Corner Window RO Left Leg (LH) Width
- Measurement C:** Corner Window RO Right Leg (RH) Width



**Measurement Tables**

PROJECT \_\_\_\_\_

MEASURED BY: \_\_\_\_\_

DATE: \_\_\_\_\_

**Measurement A:** Corner Window RO Height

**Measurement B:** Corner Window RO

Left Leg (LH) Width

**Measurement C:** Corner Window RO Right

Leg (RH) Width

*NOTE: Follow the steps on the previous page to fill in this worksheet.*

**Required Measurements:**

**RO Height** = FS Height + 1/2".

**RO Width** = Basic Frame + 2 1/4" for each leg (side).

**Optional Measurements:**

**MO Height** = FS Height + 1/4", or Outside of Exterior Casing + 1/4".

**MO Width** = Basic Frame + 1/4", or Outside of Exterior Casing + 1/4"

Window Location	Product Description	Rough Opening Measurement			Notes or Other Measurements
		A	B	C	

# Framing Conversions

**Framing RO Width** is the measurement of the wall frame only, excluding any exterior sheathing and/or rigid insulation

If Sealing Plane is at the exterior of the Sheathing: **Framing RO Width** = RO Width – Exterior Sheathing.

*Example: 36" RO width – 0.625" exterior sheathing = 35.375" framing RO (before sheathing)*

If Sealing Plane is at the exterior of Rigid Insulation: **Framing RO Width** = RO Width – Exterior Sheathing – Exterior Rigid Insulation.

*Example: 36" RO width – 0.625" Exterior Sheathing – 1" Rigid Insulation = 34.375" Framing RO Width (before sheathing/insulation)*

