

TYPICAL ELEVATIONS

THESE WINDOWS ARE RATED FOR LARGE & SMALL MISSILE IMPACT. SHUTTERS ARE NOT REQUIRED.

Coastline Glider IZ4 (XXL)

APPROVAL APPLIES TO SINGLE UNITS OR SIDE BY SIDE COMBINATIONS OF H.S./H.S. OR HORIZONTAL SLIDING WITH OTHER WINDOW TYPES IN MODULES OF TWO OR MORE WINDOWS USING F.B.C. APPROVED MULLIONS IN BETWEEN. LOWER DESIGN PRESSURE FROM WINDOWS OR MULLION APPROVAL WILL APPLY TO ENTIRE SYSTEM.

THIS PRODUCT HAS BEEN DESIGNED AND TESTED TO COMPLY WITH THE REQUIREMENTS OF THE 2020 (7TH EDITION)/2023 (8TH EDITION) FLORIDA BUILDING CODE INCLUDING HIGH VELOCITY HURRICANE ZONE (HVHZ).

1BY OR 2BY WOOD BUCKS & BUCK FASTENERS BY OTHERS, MUST BE DESIGNED AND INSTALLED ADEQUATELY TO TRANSFER APPLIED PRODUCT LOADS TO THE BUILDING STRUCTURE.

ANCHORS SHALL BE CORROSION RESISTANT, SPACED AS SHOWN ON DETAILS AND INSTALLED PER MANUF'S INSTRUCTIONS. SPECIFIED EMBEDMENT TO BASE MATERIAL SHALL BE BEYOND WALL DRESSING OR STUCCO.

A LOAD DURATION INCREASE IS USED IN DESIGN OF ANCHORS INTO WOOD ONLY. ALL SHIMS TO BE HIGH IMPACT, NON-METALLIC AND NON-COMPRESSIBLE.

MATERIALS INCLUDING BUT NOT LIMITED TO STEEL/METAL SCREWS, THAT COME INTO CONTACT WITH OTHER DISSIMILAR MATERIALS SHALL MEET THE REQUIREMENTS OF THE 2020/2023 FLORIDA BLDG. CODE & ADOPTED STANDARDS.

THIS PRODUCT APPROVAL IS GENERIC AND DOES NOT PROVIDE INFORMATION FOR A SITE SPECIFIC PROJECT, i.e. LIFE SAFETY OF THIS PRODUCT, ADEQUACY OF STRUCTURE RECEIVING THIS PRODUCT AND SEALING AROUND OPENING FOR WATER INFILTRATION RESISTANCE ETC. CONDITIONS NOT SHOWN IN THIS DRAWING ARE TO BE ANALYZED SEPARATELY, AND TO BE REVIEWED BY BUILDING OFFICIAL.

DESIGN LOADS SHOWN ARE BASED ON 'ALLOWABLE STRESS DESIGN (ASD)'.

MANUFACTURER'S LABEL SHALL BE LOCATED ON A READILY VISIBLE LOCATION IN ACCORDANCE WITH SECTION 1709.9.3 OF FLORIDA BUILDING CODE. LABELING TO COMPLY WITH SECTION 1709.9.2.

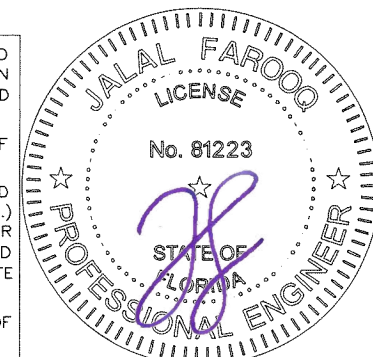
MAXIMUM DESIGN LOAD RATING = + 60.0 PSF
(FOR SIZES SHOWN ABOVE OR SMALLER) - 60.0 PSF

NOTE:
GLASS CAPACITIES ARE BASED ON
ASTM E1300-09 (3 SEC. GUSTS)
AND FLORIDA BUILDING COMMISSION
DECLARATORY STATEMENT DCA05-DEC-219

Sealed: 8/2/2023

FL #33619

- A- CONTRACTOR TO BE RESPONSIBLE FOR THE SELECTION, PURCHASE AND INSTALLATION OF THIS PRODUCT BASED ON THIS PRODUCT EVALUATION PROVIDED HE/SHE DOES NOT DEVIATE FROM THE CONDITIONS DETAILED ON THIS DOCUMENT.
- B- THIS PRODUCT EVALUATION DOCUMENT WILL BE CONSIDERED INVALID IF ALTERED BY ANY MEANS.
- C- SITE SPECIFIC PROJECTS SHALL BE PREPARED BY A FLORIDA REGISTERED ENGINEER OR ARCHITECT WHICH WILL BECOME THE ENGINEER OF RECORD (E.O.R.) FOR THE PROJECT AND WHO WILL BE RESPONSIBLE FOR THE PROPER USE OF THE P.E.D. ENGINEER OF RECORD, ACTING AS A DELEGATED ENGINEER TO THE P.E.D. ENGINEER SHALL SUBMIT TO THIS LATTER THE SITE SPECIFIC DRAWINGS FOR REVIEW.
- D- THIS P.E.D. SHALL BEAR THE DATE AND ORIGINAL SEAL AND SIGNATURE OF THE PROFESSIONAL ENGINEER OF RECORD THAT PREPARED IT.



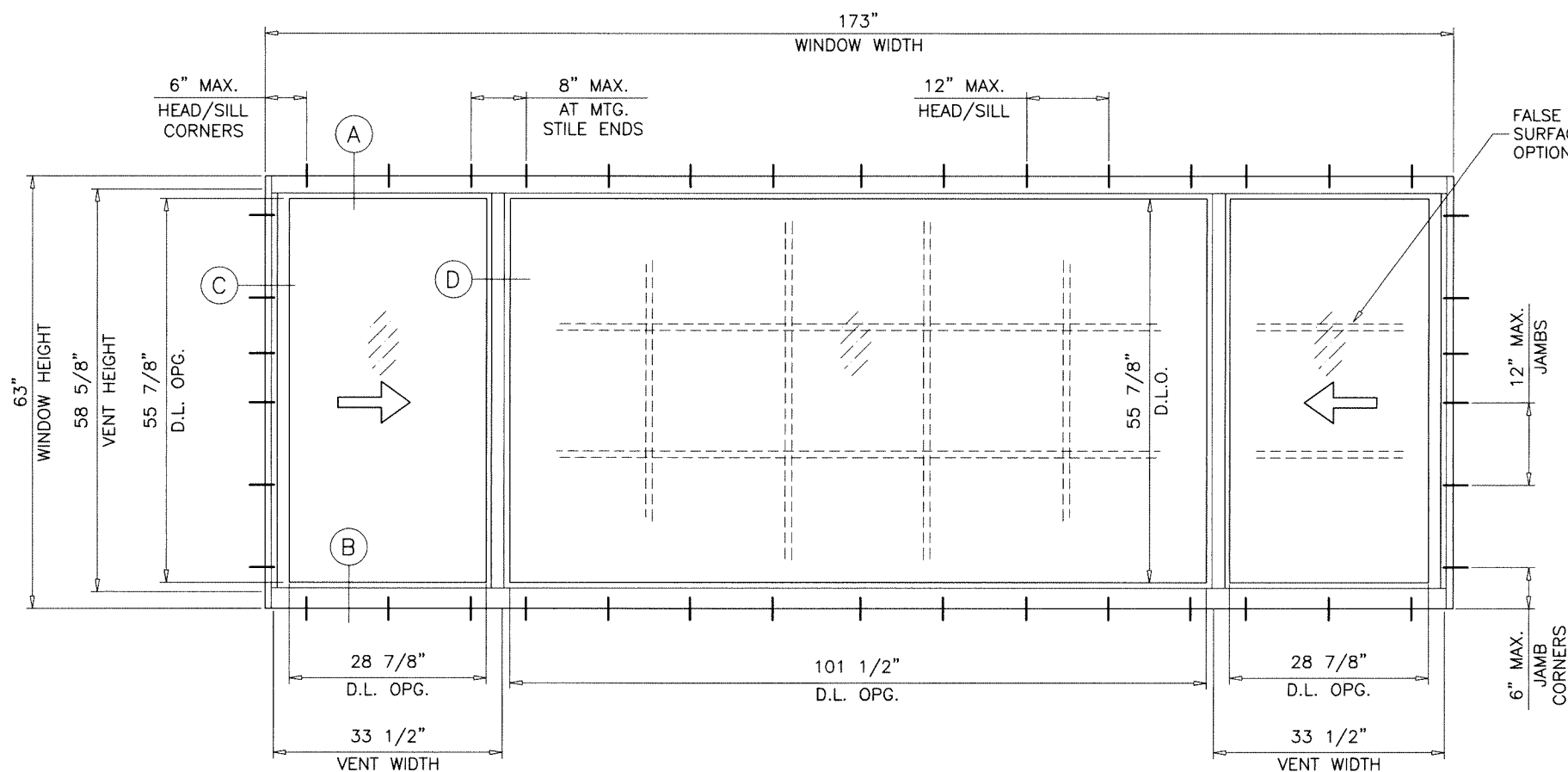
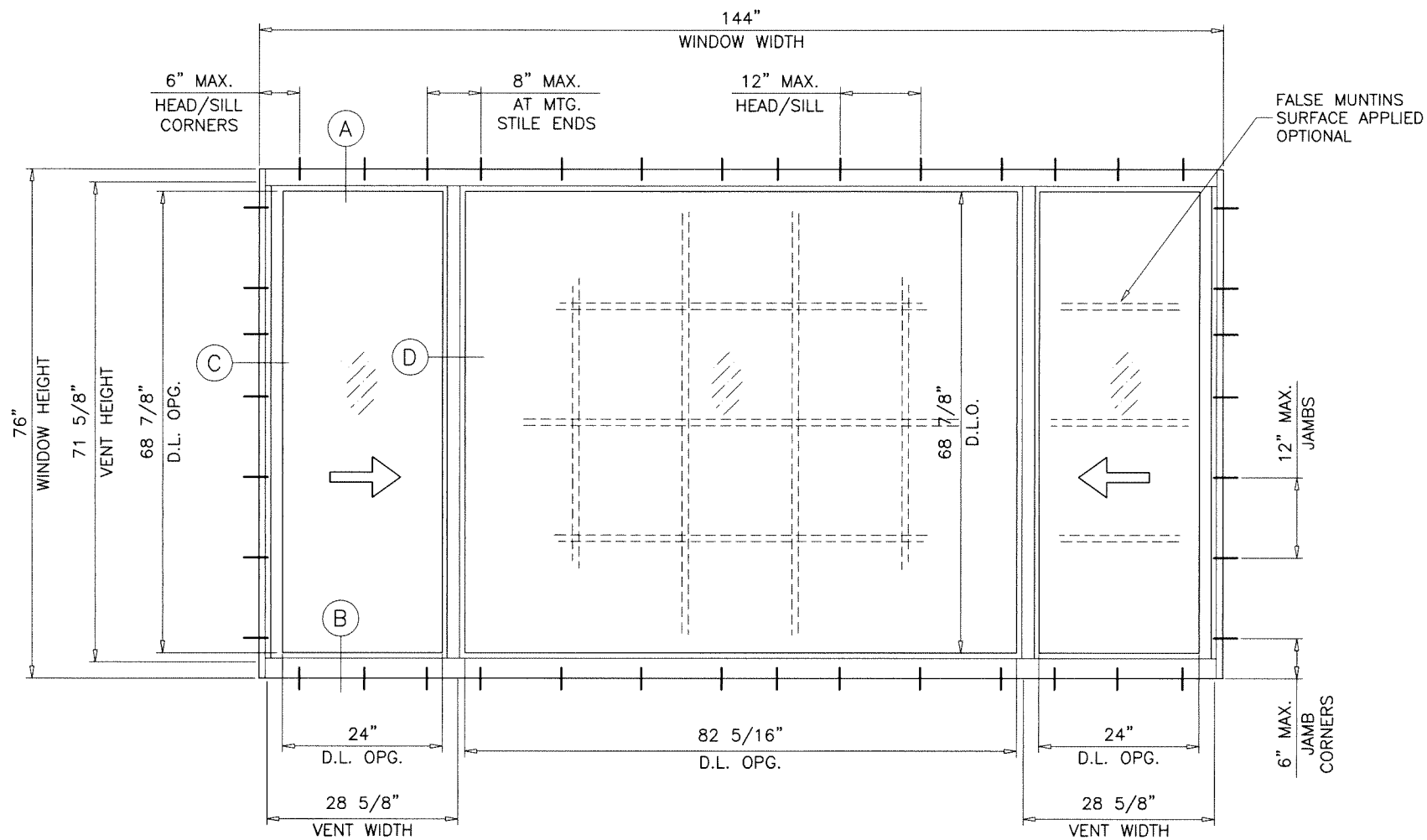
af c
AL-FAROOQ CORPORATION
ENGINEERS & PRODUCT DEVELOPMENT
9360 SUNSET DRIVE, SUITE 220
MIAMI, FLORIDA 33173 (C.A.N. 3538)
TEL. (305) 264-8100 FAX. (305) 262-6978
COMP-ANL\20-70F-MWD

Coastline Glider IZ4 (XXL)
MARVIN
PO Box 100, 401 State Ave. N.
Warroad, MN. 56763
Tel. (218) 386-1430 Ext. 2143

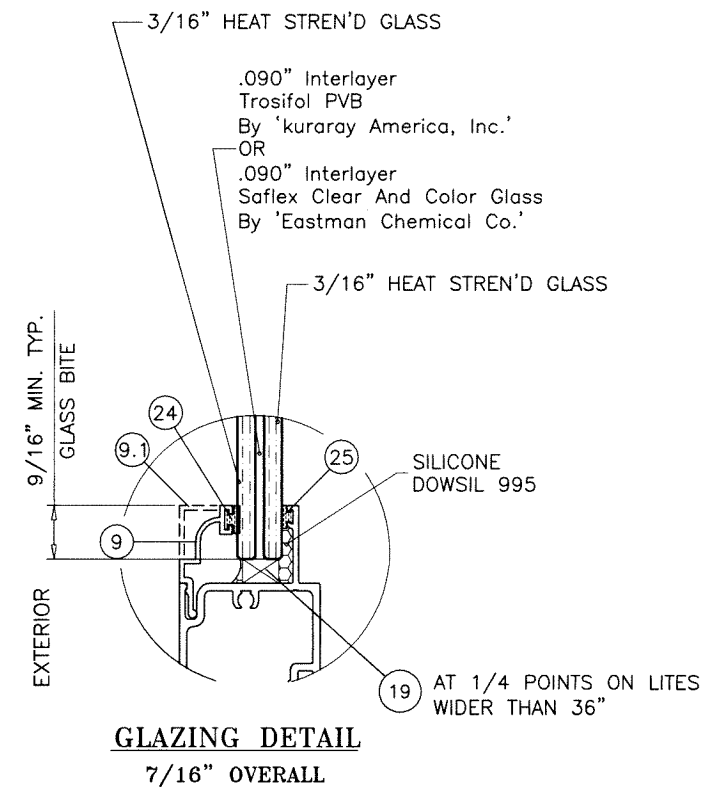
no	date	description
A	08.02.23	UPDATED TO 2023 FBC

date:	09-18-20
scale:	1/2"=1'-0"
dr. by:	TARIQ
chk. by:	

drawing no.
20-70F
sheet 1 of 6



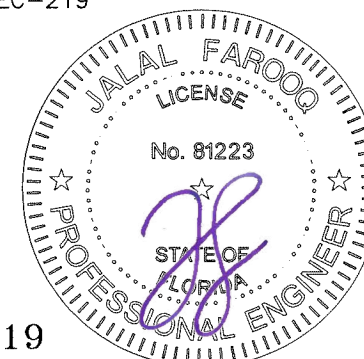
TYPICAL ELEVATIONS



MAXIMUM DESIGN LOAD RATING = + 60.0 PSF
(FOR SIZES SHOWN ABOVE OR SMALLER) - 60.0 PSF

NOTE:
GLASS CAPACITIES ARE BASED ON
ASTM E1300-09 (3 SEC. GUSTS)
AND FLORIDA BUILDING COMMISSION
DECLARATORY STATEMENT DCA05-DEC-219

Sealed: 8/2/2023



FL #33619

af c
AL-FAROOQ CORPORATION
ENGINEERS & PRODUCT DEVELOPMENT
9360 SUNSET DRIVE, SUITE 220
MIAMI, FLORIDA 33173 (C.A.N. 3538)
TEL. (305) 264-8100 FAX. (305) 262-6978

Coastline Glider IZ4 (XXL)

MARVIN

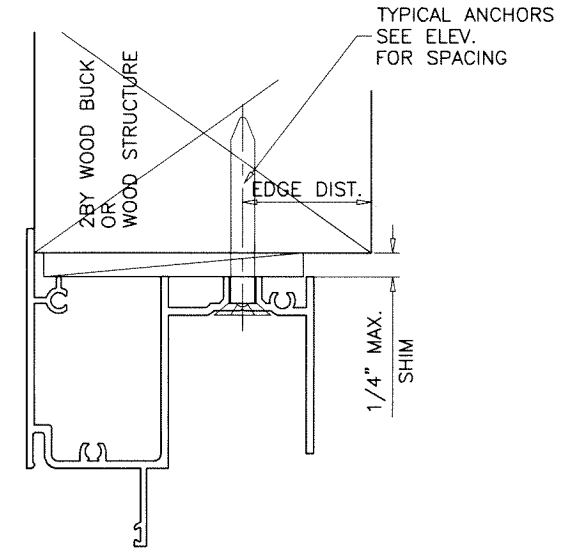
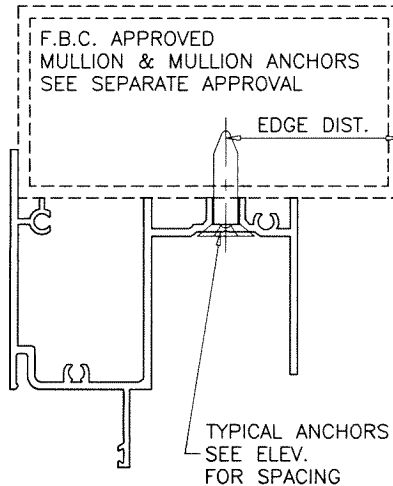
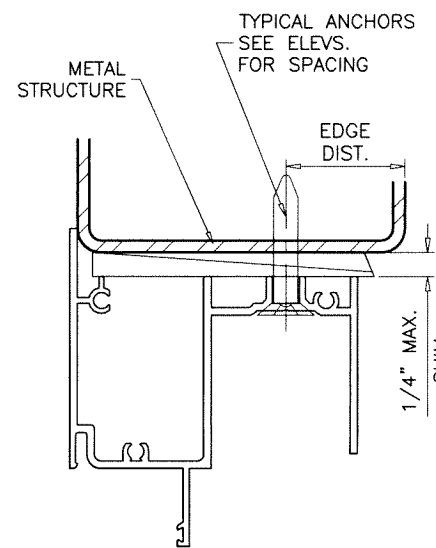
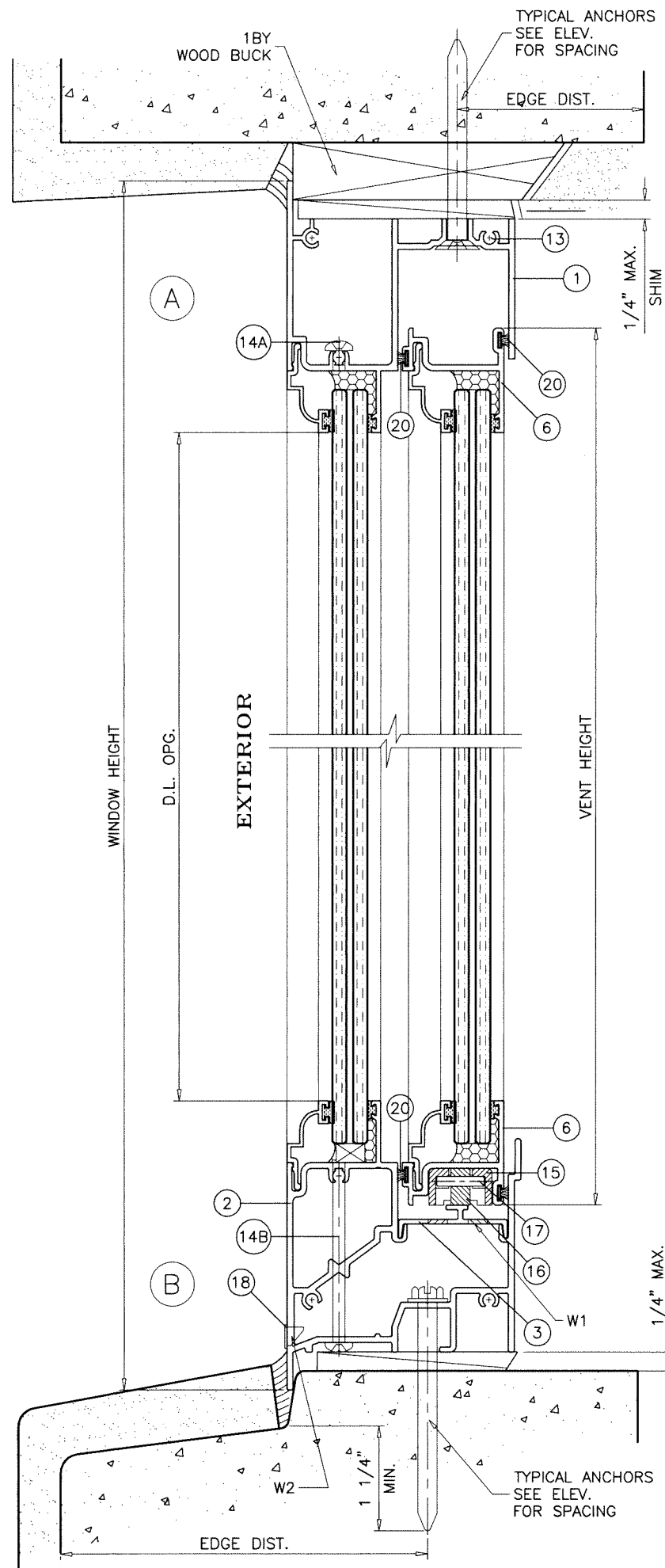
PO Box 100, 401 State Ave. N.
Warroad, MN. 56763
Tel. (218) 386-1430 Ext. 2143

revisions:	no	date	by	description

date:	09-18-20
scale:	1/2" = 1"
dr. by:	TARIQ
chk. by:	

drawing no.
20-70F
sheet 2 of 6

COMP-ANL\20-70F-MWD



WOOD BUCKS AND METAL STRUCTURE NOT BY 'MARVIN' MUST SUSTAIN LOADS IMPOSED BY GLAZING SYSTEM AND TRANSFER THEM TO THE BUILDING STRUCTURE.

SEALANTS:

ALL JOINTS AND FRAME CONNECTIONS SEALED WITH SILICONE OR ACRYLIC SEALANT.

WEEPHOLES:

- W1 = 1" X 1/4" WEEPHOLES IN PAIRS
 - (2) ON VENT AREA AT 2" FROM ENDS AND 26" O.C.
 - (4) UNDER FIX. LITE AT 18" O.C.
- W2 = 1-3/4" X 1/4" WEEPHOLES WITH NYLON BAFFLE
 - (2) ON VENT AREA AT 15" FROM ENDS AND 24" O.C.
 - (3) UNDER FIX. LITE AT 16" O.C.

TYPICAL ANCHORS: SEE ELEV. FOR SPACING

1/4" DIA. ULTRACON+ BY 'DEWALT' (Fu=164 KSI, Fy=148 KSI)
 INTO 2BY WOOD BUCKS OR WOOD STRUCTURES
 1-1/2" MIN. PENETRATION INTO WOOD

THRU 1BY BUCKS INTO CONC. OR MASONRY
 1-1/4" MIN. EMBED INTO CONC. OR MASONRY
 DIRECTLY INTO CONC. OR MASONRY
 1-1/4" MIN. EMBED INTO CONC. OR MASONRY

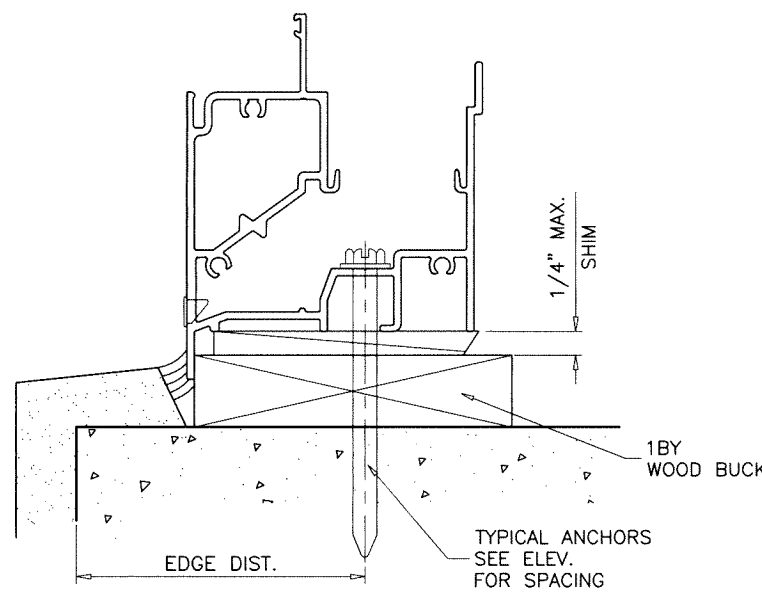
#14 SMS OR SELF DRILLING SCREWS (GRADE 2 CRS)
 INTO METAL STRUCTURES
 STEEL : 12 GA. MIN. (Fy = 36 KSI MIN.)
 ALUMINUM : 1/8" THK. MIN. (6063-T5 MIN.)
 (STEEL IN CONTACT WITH ALUMINUM TO BE PLATED OR PAINTED)

#12 SMS OR SELF DRILLING SCREWS (GRADE 2 CRS)
 INTO F.B.C. APPROVED MULLIONS (MIN. THK. = 1/8")
 (NO SHIM SPACE)

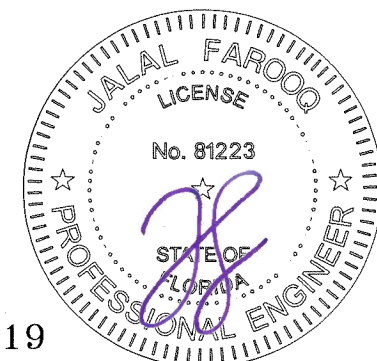
TYPICAL EDGE DISTANCE

INTO CONCRETE AND MASONRY = 1-3/4" MIN.
 INTO WOOD STRUCTURE = 1" MIN.
 INTO METAL STRUCTURE = 1/2" MIN.

WOOD AT HEAD, SILL OR JAMBS SG = 0.55 MIN.
 CONCRETE AT HEAD, SILL OR JAMBS f'c = 3000 PSI MIN.
 C-90 HOLLOW/FILLED BLOCK AT JAMBS f'm = 2000 PSI MIN.



Sealed: 8/2/2023



FL #33619

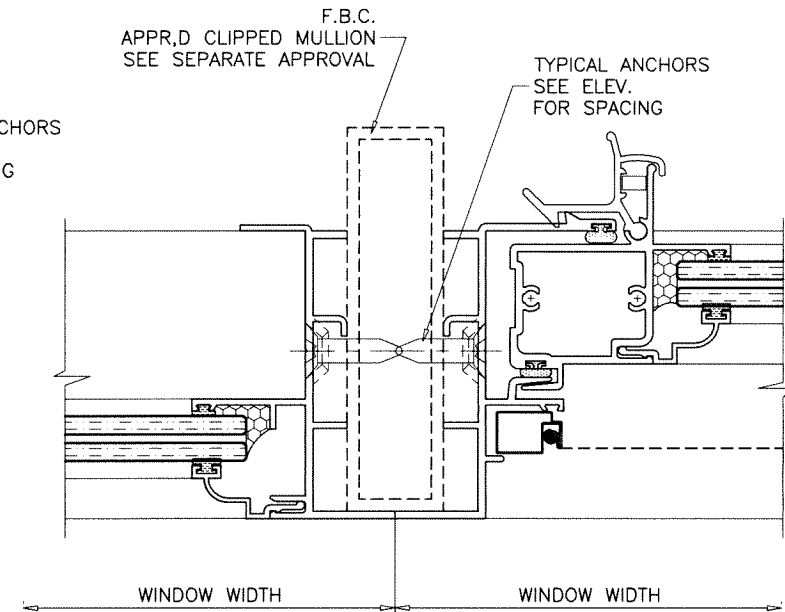
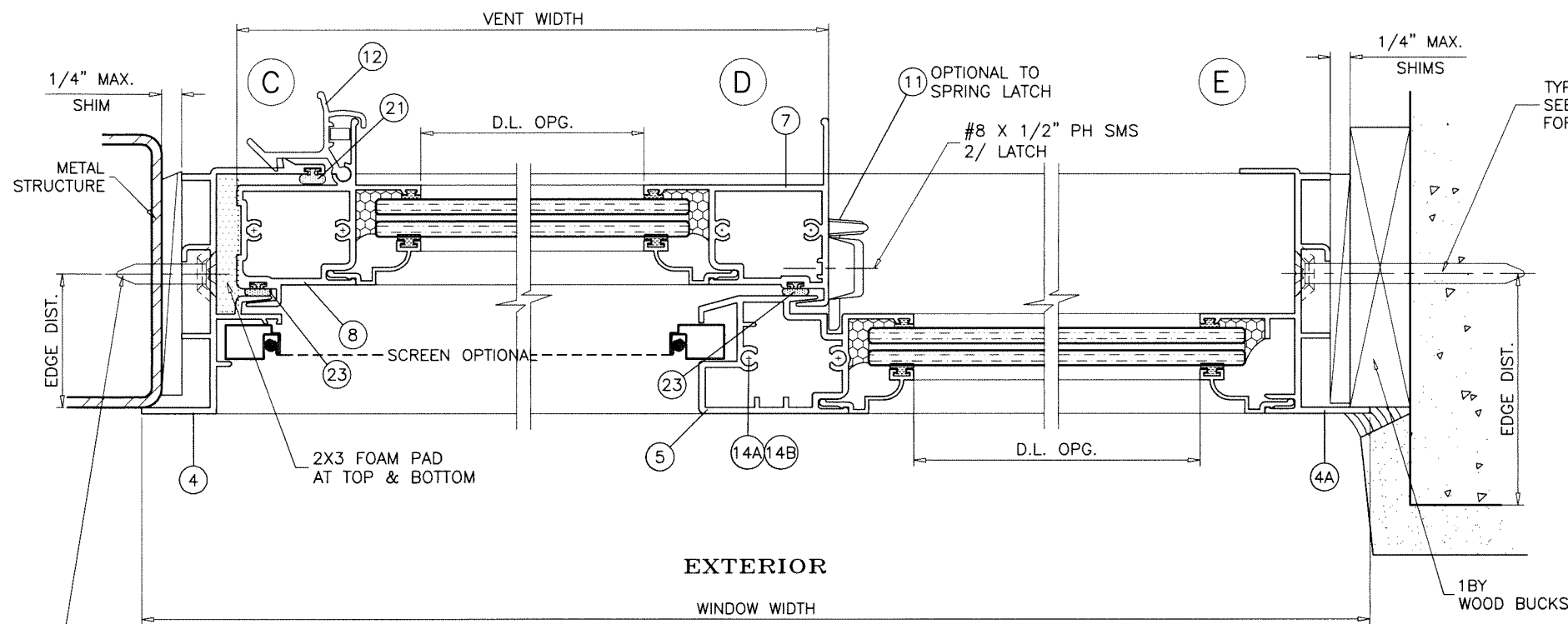
af c
AL-FAROOQ CORPORATION
 ENGINEERS & PRODUCT DEVELOPMENT
 9360 SUNSET DRIVE, SUITE 220
 MIAMI, FLORIDA 33173 (C.A.N. 3538)
 TEL. (305) 264-8100 FAX. (305) 262-6978
 COMP-ANI\20-70F-MWD

Coastline Glider IZ4 (XXL)
MARVIN
 PO Box 100, 401 State Ave. N.
 Warroad, MN. 56763
 Tel. (218) 386-1430 Ext. 2143

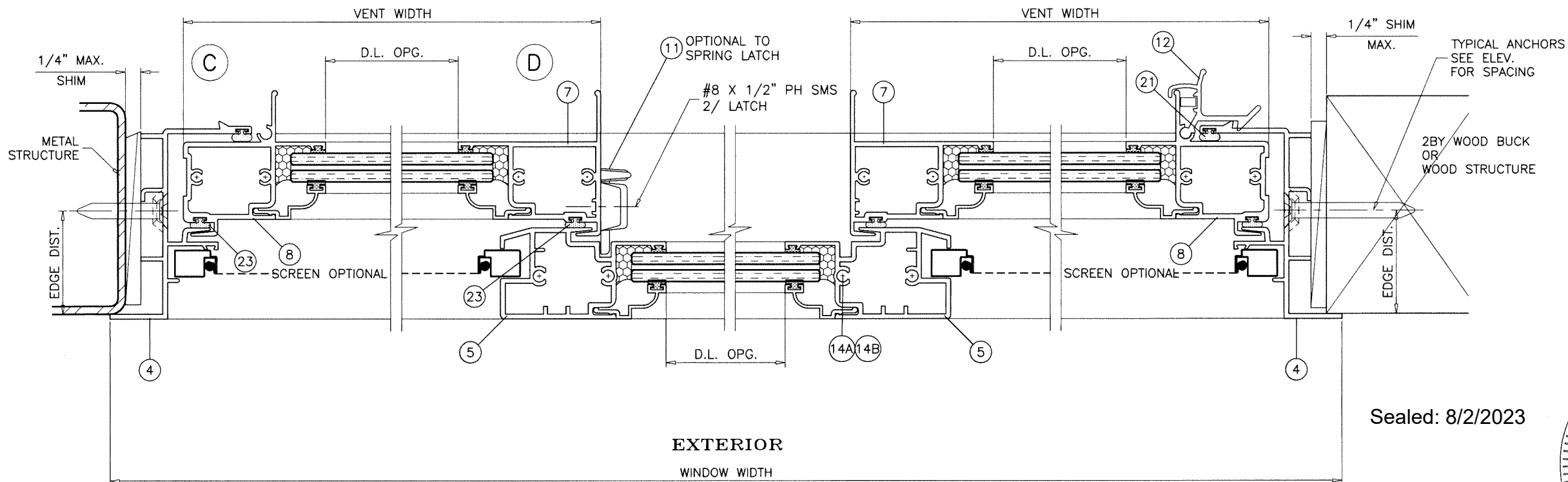
revisions:	no	date	by	description

date: 09-18-20
 scale: 1/2" = 1"
 dr. by: TARIQ
 chk. by:

drawing no.
20-70F
 sheet 3 of 6

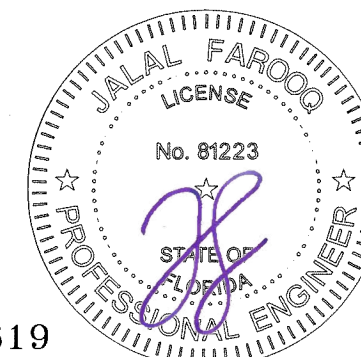


EXTERIOR
WINDOW WIDTH
XO LAYOUT
OX OPPOSITE



EXTERIOR
WINDOW WIDTH
XOX LAYOUT

Sealed: 8/2/2023



FL #33619

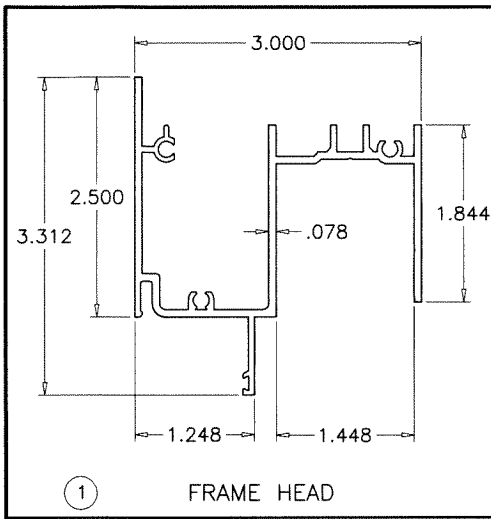
afc
AL-FAROOQ CORPORATION
ENGINEERS & PRODUCT DEVELOPMENT
9360 SUNSET DRIVE, SUITE 220
MIAMI, FLORIDA 33173 (C.A.N. 3538)
TEL. (305) 264-8100 FAX. (305) 262-6978
COMP-ANI\20-70F-MWD

Coastline Glider IZ4 (XXL)
MARVIN
PO Box 100, 401 State Ave. N.
Warroad, MN. 56763
Tel. (218) 386-1430 Ext. 2143

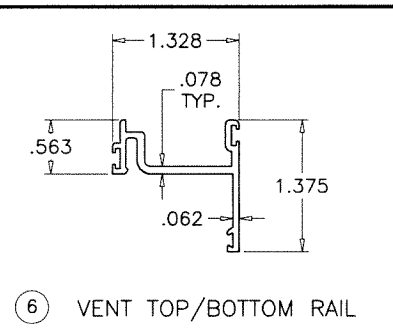
revisions:	no	date	by	description

date:	09-18-20
scale:	1/2" = 1"
dr. by:	TARIQ
chk. by:	

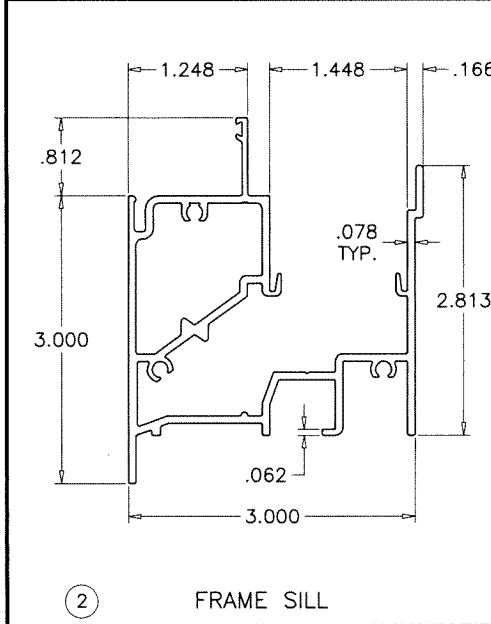
drawing no.
20-70F
sheet 4 of 6



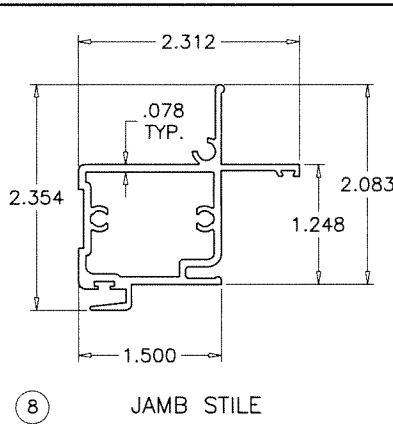
① FRAME HEAD



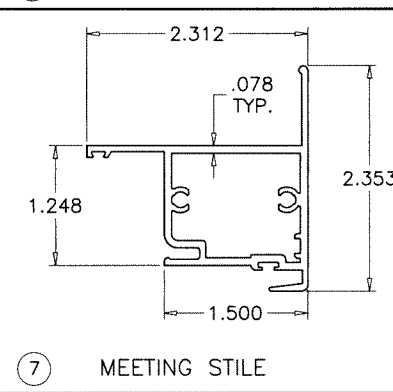
⑥ VENT TOP/BOTTOM RAIL



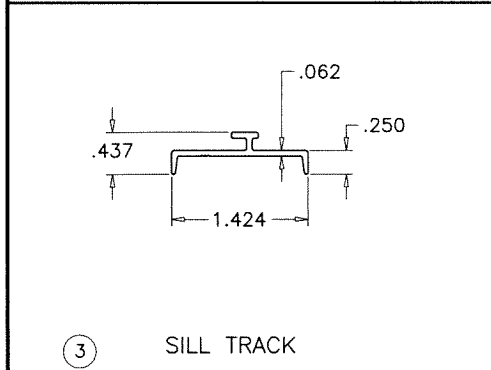
② FRAME SILL



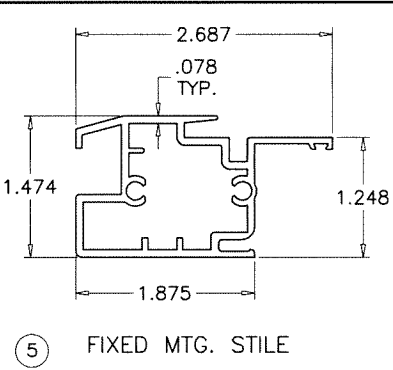
⑧ JAMB STILE



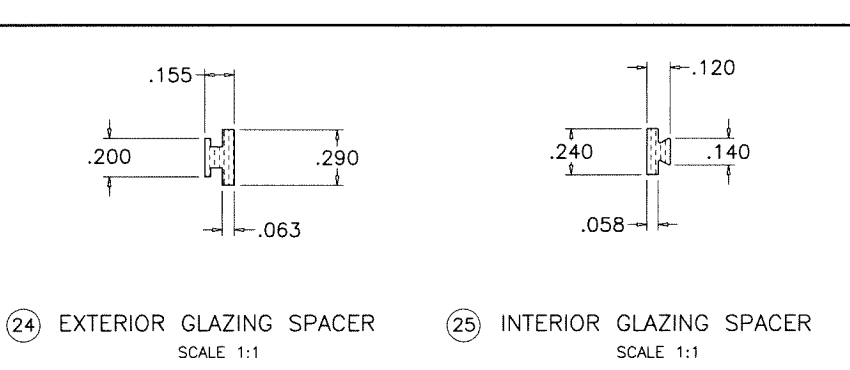
⑦ MEETING STILE



③ SILL TRACK

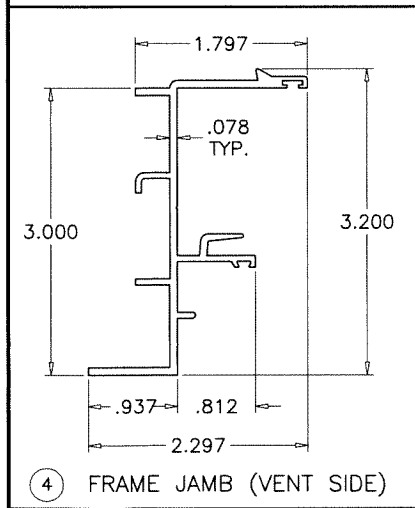


⑤ FIXED MTG. STILE

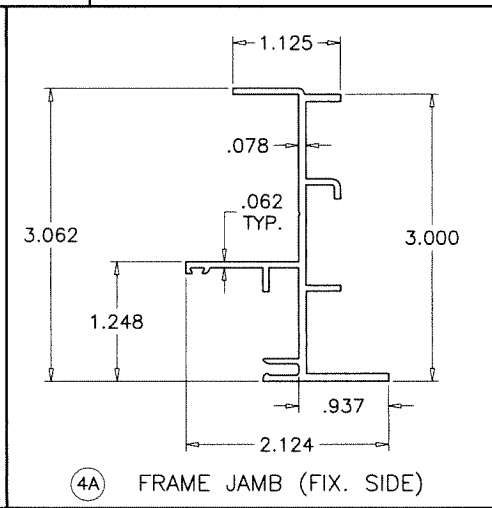


②④ EXTERIOR GLAZING SPACER
SCALE 1:1

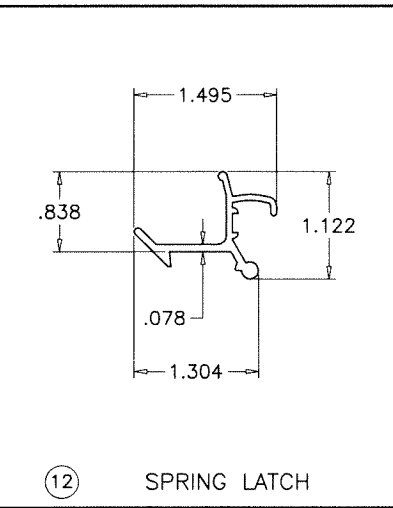
②⑤ INTERIOR GLAZING SPACER
SCALE 1:1



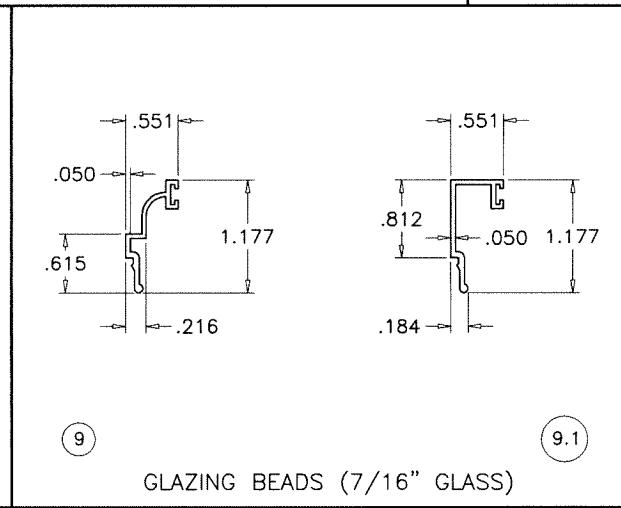
④ FRAME JAMB (VENT SIDE)



④A FRAME JAMB (FIX. SIDE)



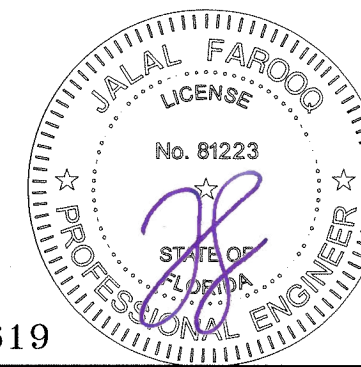
⑫ SPRING LATCH



⑨ GLAZING BEADS (7/16" GLASS) ⑨.1

ITEM	PART #	QUANTITY	DESCRIPTION	MATERIAL	MANF./SUPPLIER/REMARKS
1	SIW201	1	FRAME HEAD	6063-T6	-
2	SIW202	1	FRAME SILL	6063-T6	-
3	SIW213	1	SILL TRACK	6063-T6	-
4	SIW204	2	FRAME JAMB (VENT SIDE)	6063-T5	-
4A	SIW131	2	FRAME JAMB (FIX SIDE)	6063-T5	-
5	SIW206	1/	VENT FIXED MTG. RAIL	6063-T5	-
6	SIW107	2/	VENT TOP & BOTTOM RAIL	6063-T5	-
7	SIW105	1/	VENT INTERLOCK	6063-T5	-
8	SIW106	1/	VENT JAMB STILE	6063-T6	-
9	SIW108	AS REQD.	GLAZING BEAD (7/16" GLASS)	6063-T5	-
9.1	SIW127	AS REQD.	ALT. GLAZING BEAD (7/16" GLASS)	6063-T5	-
11	2K356B22	2/	SWEEP LATCH, AT 15-1/2" FROM EACH END	-	MASSOUD & BROS. CO.
12	SIW109	2/	SPRING LATCH, AT 15-1/2" FROM EACH END	6063-T6	-
13	-	AS REQD.	FRAME & VENT ASSY SCREWS	-	#10 X 1-1/2" PH SMS
14A	-	2/	FIXED RAIL SCREW AT TOP	-	#12 X 1-1/2" PH SMS
14B	-	2/	FIXED RAIL SCREW AT BOTTOM	-	#12 X 4" PH SMS
15	SIW207	4/	ROLLER HOUSING & GUIDE	DELTRIN	-
16	SIW208	2/	ROLLER	-	BRASS OR ST. STEEL
17	SIW209	2/	ROLLER PIN	ST. STEEL	-
18	-	5/	WDW. BAFFLE	NYLON	-
19	-	2/	LITE SETTING BLOCK, DUROMETER 85±5 SHORE A	EPDM	-
20	W23201NG	AS REQD.	TOP & BOTTOM RAIL W'STRIPPING	-	ULTRAFAB OE EQUIV.
21	9302BL	AS REQD.	FRAME JAMB W'STRIPPING	POLYPROPYLENE	CENTRAL PLASTICS
22	-	OPTIONAL	SCREEN	-	5/16" BOX
23	U4513	AS REQD.	BULB W'STRIPPING	-	SCHLEGEL
24	5530	AS REQD.	EXTERIOR GLAZING SPACER, DUROMETER 70±5 SHORE A	SANTOPRENE	CENTRAL PLASTICS
25	E20218	AS REQD.	INTERIOR GLAZING SPACER, DUROMETER 70±5 SHORE A	TPE	ULTRAFAB

Sealed: 8/2/2023

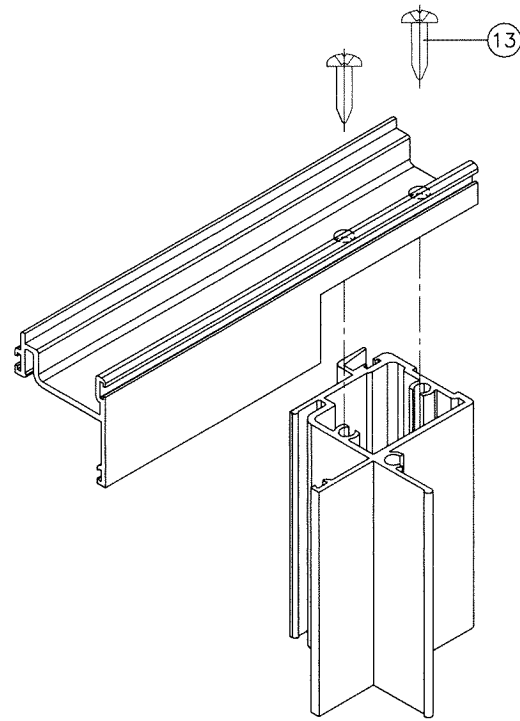


FL #33619

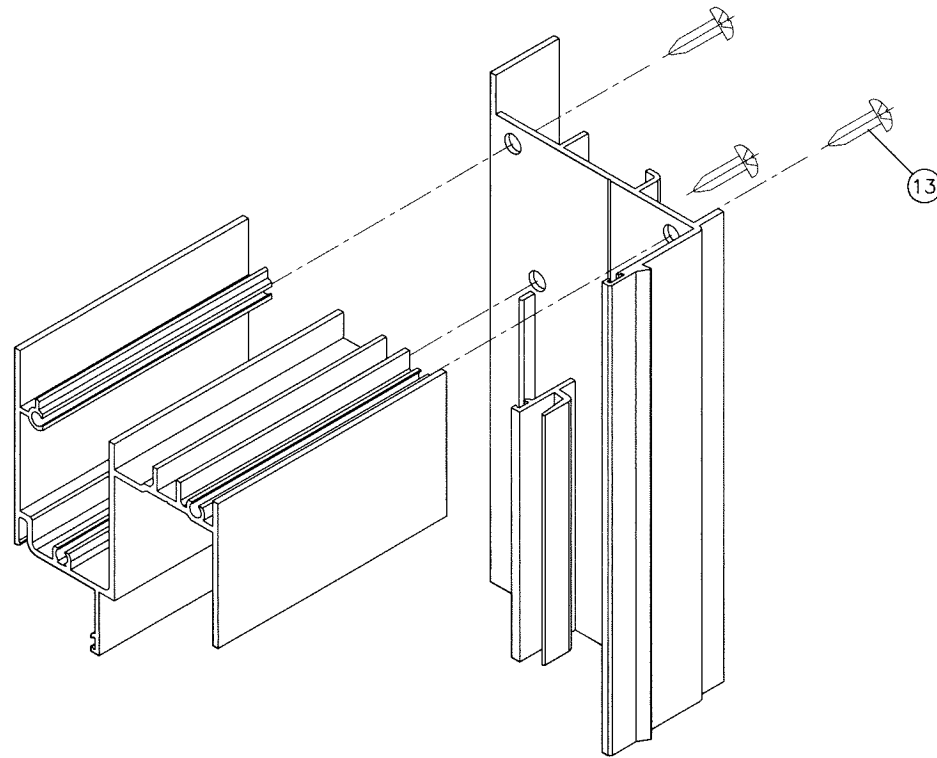
af c
AL-FAROOQ CORPORATION
 ENGINEERS & PRODUCT DEVELOPMENT
 9360 SUNSET DRIVE, SUITE 220
 MIAMI, FLORIDA 33173 (C.A.N. 3538)
 TEL. (305) 264-8100 FAX. (305) 262-6978
 COMP-ANL\20-70F-MWD

Coastline Glider IZ4 (XXL)
MARVIN
 PO Box 100, 401 State Ave. N.
 Warroad, MN. 56763
 Tel. (218) 386-1430 Ext. 2143

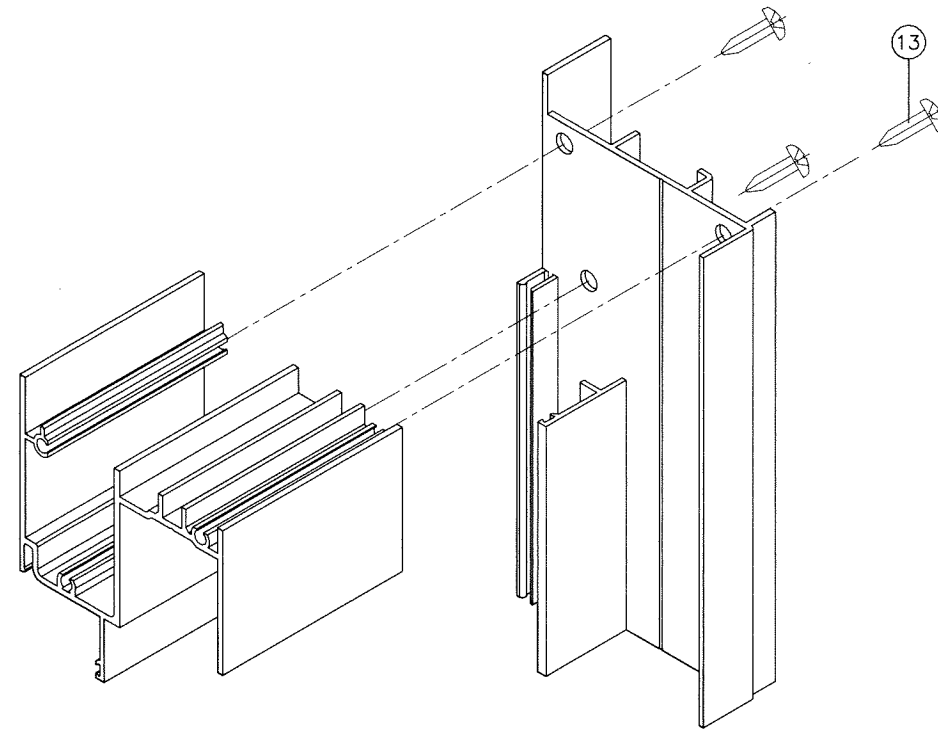
revisions:	no	date	by	description
date:	09-18-20	scale:	1/2" = 1"	dr. by: TARIQ
chk. by:				
drawing no.	20-70F			
sheet	5 of 6			



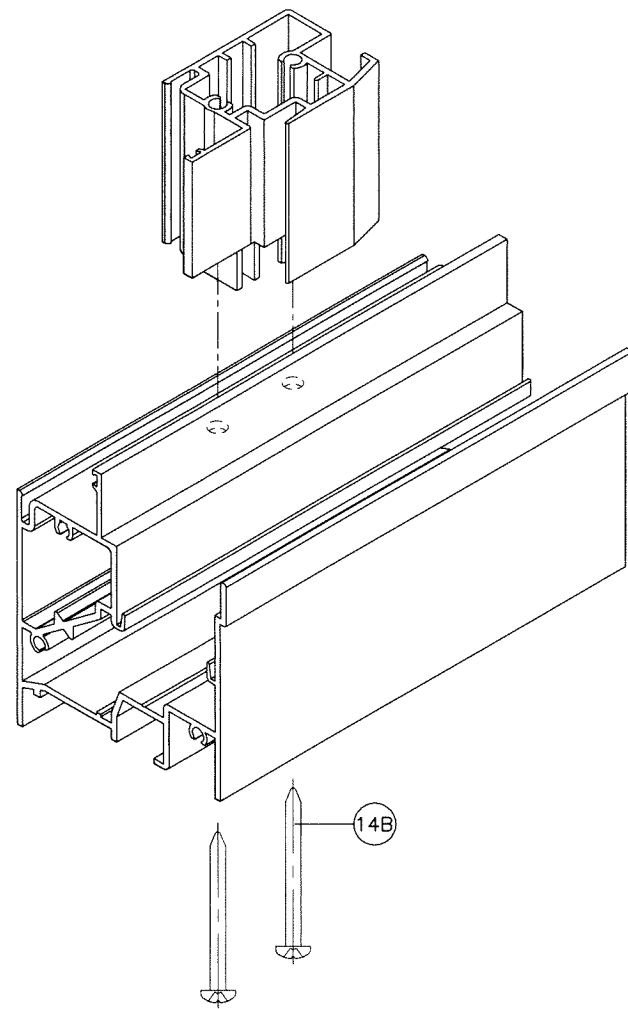
VENT TOP/BOTTOM CORNERS



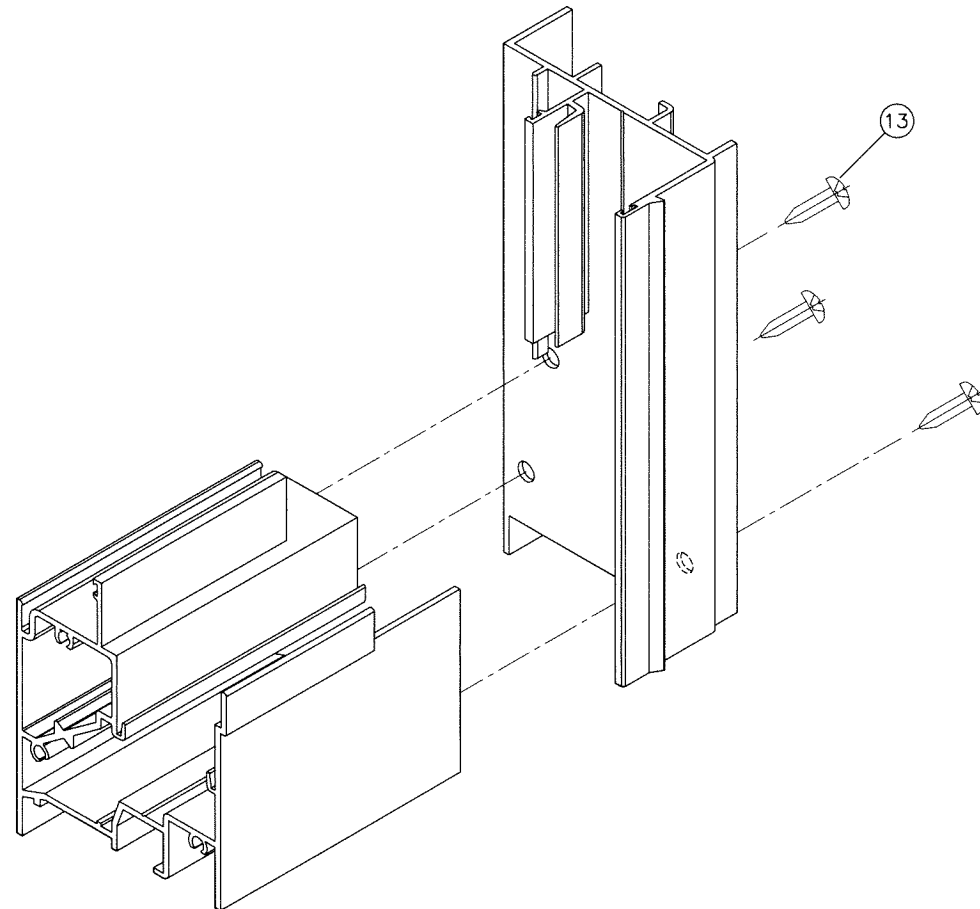
FRAME TOP CORNER



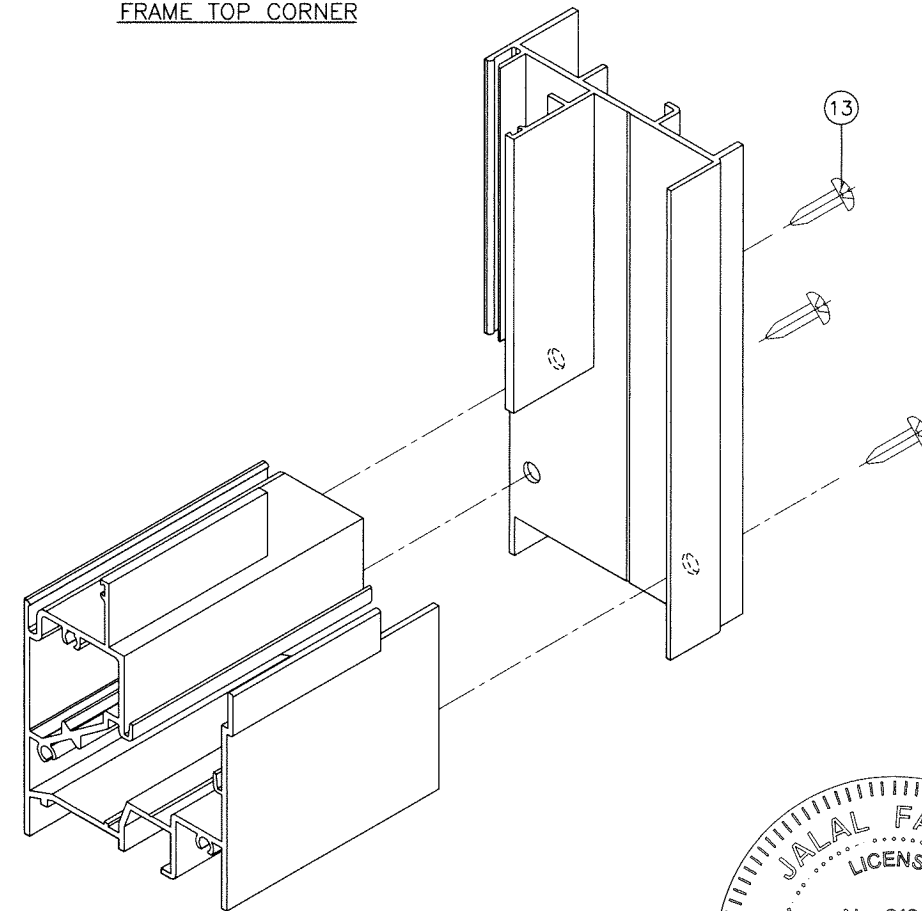
FRAME TOP CORNER



FIXED MTG. RAIL CORNER

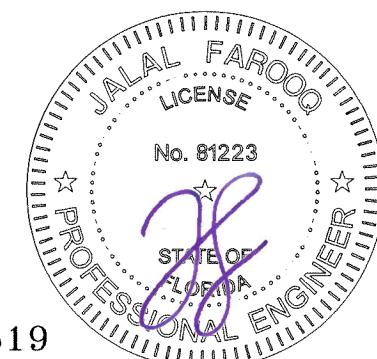


FRAME BOTTOM CORNER
AT MOVING END



FRAME BOTTOM CORNER
AT FIXED END

Sealed: 8/2/2023



FL #33619

a f c
AL-FAROOQ CORPORATION
 ENGINEERS & PRODUCT DEVELOPMENT
 9360 SUNSET DRIVE, SUITE 220 (C.A.N. 3538)
 MIAMI, FLORIDA 33173 TEL. (305) 264-8100 FAX. (305) 262-6978
 COMP-ANL\20-70F-MWD

Coastline Glider IZ4 (XXL)



MARVIN
 PO Box 100, 401 State Ave. N.
 Warroad, MN. 56763
 Tel. (218) 386-1430 Ext. 2143

revisions:

no	date	by	description

date: 09-18-20	scale: 1/2" = 1"
dr. by: TARIQ	chk. by:

drawing no.
20-70F
 sheet 6 of 6