

# Marvin Door Sliding Screen Installation Instruction

This instruction can be used for both sliding and swinging doors.

*NOTE: Numbers listed in parentheses () are metric equivalents in millimeters rounded to the nearest whole number.*

## You Will Need to Supply:

- Tape Measure
- Pencil
- Power drill/driver with #1 Phillips bit
- Flat bladed standard screwdriver
- 3/32" (2) drill bit
- Awl

For wood doors with field applied BMC, the screen track is sent loose. Skip to [Installing the Screen Track-Wood Doors with Field Applied BMC on page 4](#) for more information.

## Install and Adjust the Screen

1. From the exterior, lift the screen and insert the roller bar assembly attached to screen into the roller track. Rotate the bottom of the screen and rest the bottom rail guide on the roller track. [See Figure 1.](#)

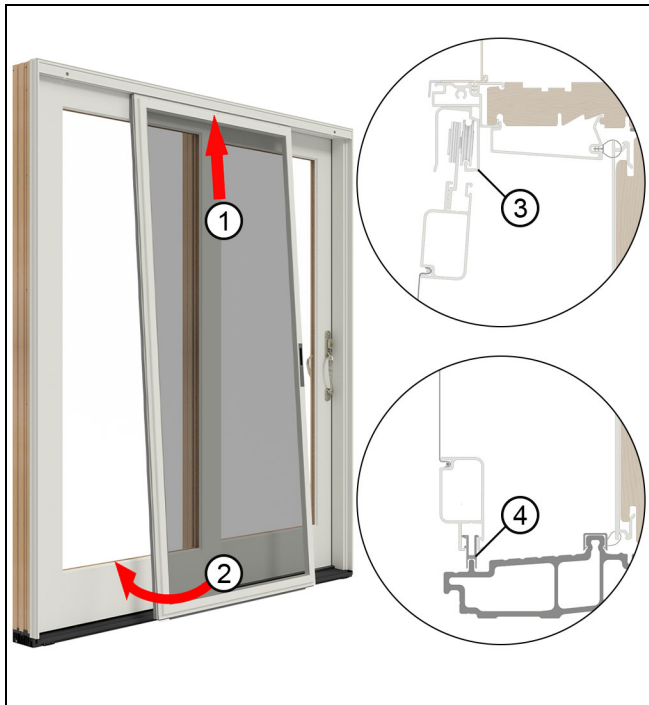


Figure 1

1	Lift the screen into the track
2	Rotate bottom of screen
3	Screen track
4	Bottom rail guide

2. Remove the plugs from the screen track to reveal the access holes. Slide the screen panel so the adjustment screws on the screen line up with the access holes in the screen track. Loosen or tighten the adjustment screws with a flat bladed screwdriver to move the screen up or down. Obtain an even reveal along the entire height of the screen panel. [See Figure 2.](#)



Figure 2

## Install the Screen Strike

1. Cut out the [Template on page 3](#).
2. To install the screen lock on side, center, or astragal jamb, raise (unlock) the screen latch. Open the screen and lightly mark the location of bottom of latch with a pencil on the exterior face of the screen. See [Figure 3](#) and [Figure 4](#).

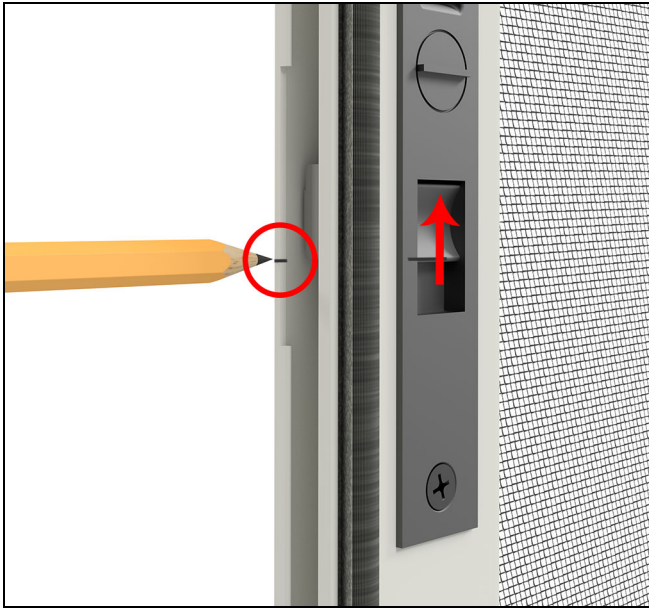


Figure 3 Lift the latch



Figure 4 Make a mark even with the bottom of the latch

3. Close the screen against the jamb or astragal. Transfer the latch location from the screen frame to the jamb. See [Figure 5](#).



Figure 5

4. Slide the screen out of the way. Place the bottom of the template 34 3/16" from the top of the sill. Mark the screw locations on the jamb with an awl. See [Figure 6](#).

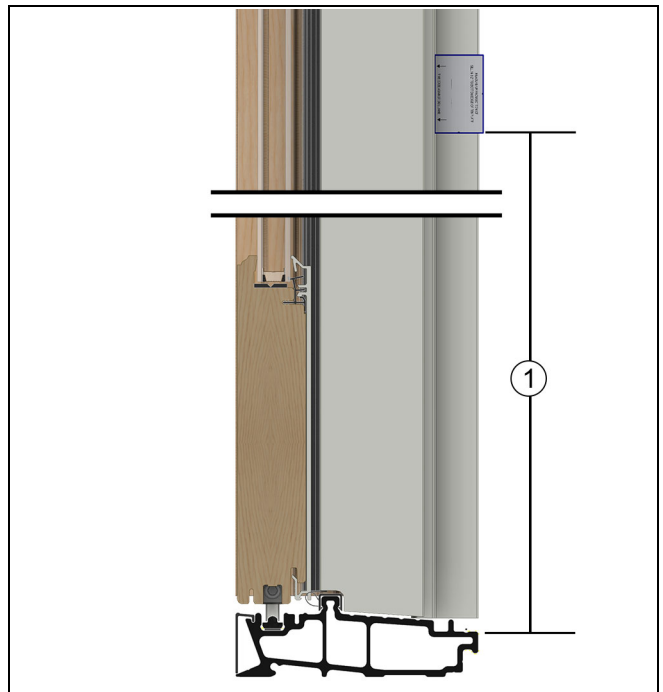


Figure 6

1	34 3/16"
---	----------

5. Drill pilot holes with a 3/32" (2) drill bit. Loosely fasten the strike to the jamb with the two #4 x 1/2" pan head screws. See Figure 7.



Figure 7

6. Move the strike so the top is 1/8" (3) below the latch reference mark and tighten the screws. Close the screen and check the latch operation. Raise or lower the strike as needed. See Figure 8.

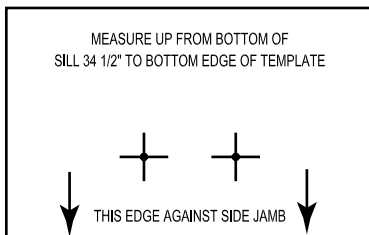


Figure 8

1	1/8"
---	------

## Template

If printing this template from an electronic file, always print with no scaling (actual size) and verify distance between screw holes to be 1/2" (13).



---

## Removing the Screen

1. To remove screen, simply remove screws attaching screen to roller bar and lift off guide or remove entire screen assembly out by lifting the bottom rail guide off the sill screen guide and pull the entire assembly out of the head jamb track, [See Figure 9](#). (This is reverse of the procedure, [Install and Adjust the Screen on page 1](#)).

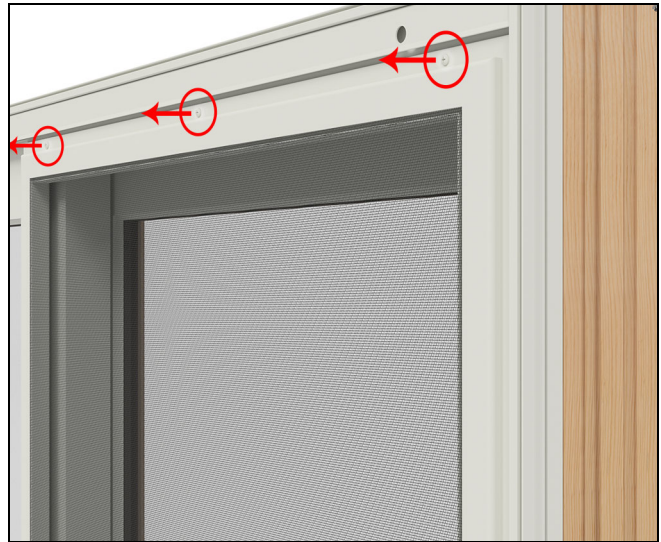


Figure 9

---

## Installing the Screen Track-Wood Doors with Field Applied BMC

*NOTE: Wood doors with factory applied BMC are sent from the factory with the screen tracks applied.*

1. Center the screen track at the unit head jamb. Align the front of the screen track with the front edge of the BMC. Pre-drill pilot holes through the screw holes in the screen track to the head jamb with the 3/32"(2) drill bit. Secure the screen track to the head jamb with the supplied screws. [See Figure 10](#).

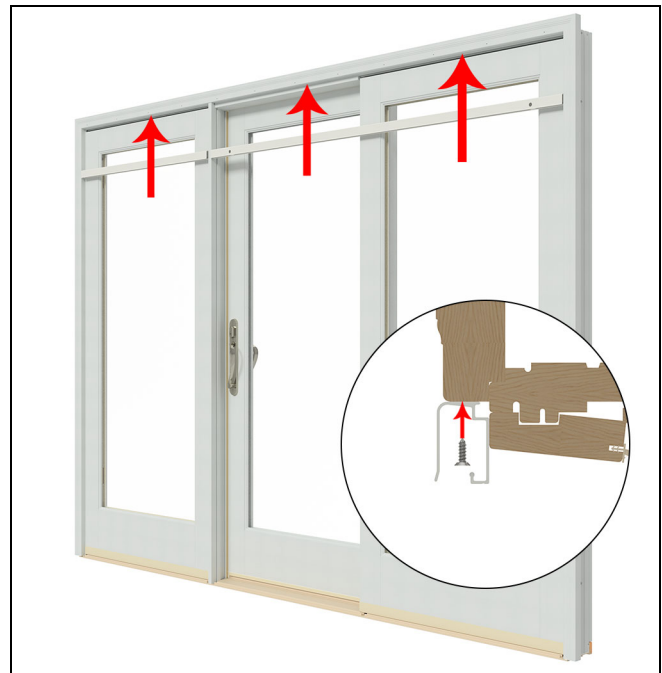


Figure 10