

Modern Swinging Door Handle

Installation Instructions

ABSTRACT: This instruction is intended to show how to install the Modern Swinging Door trimsets for doors produced 12/2020 and after.

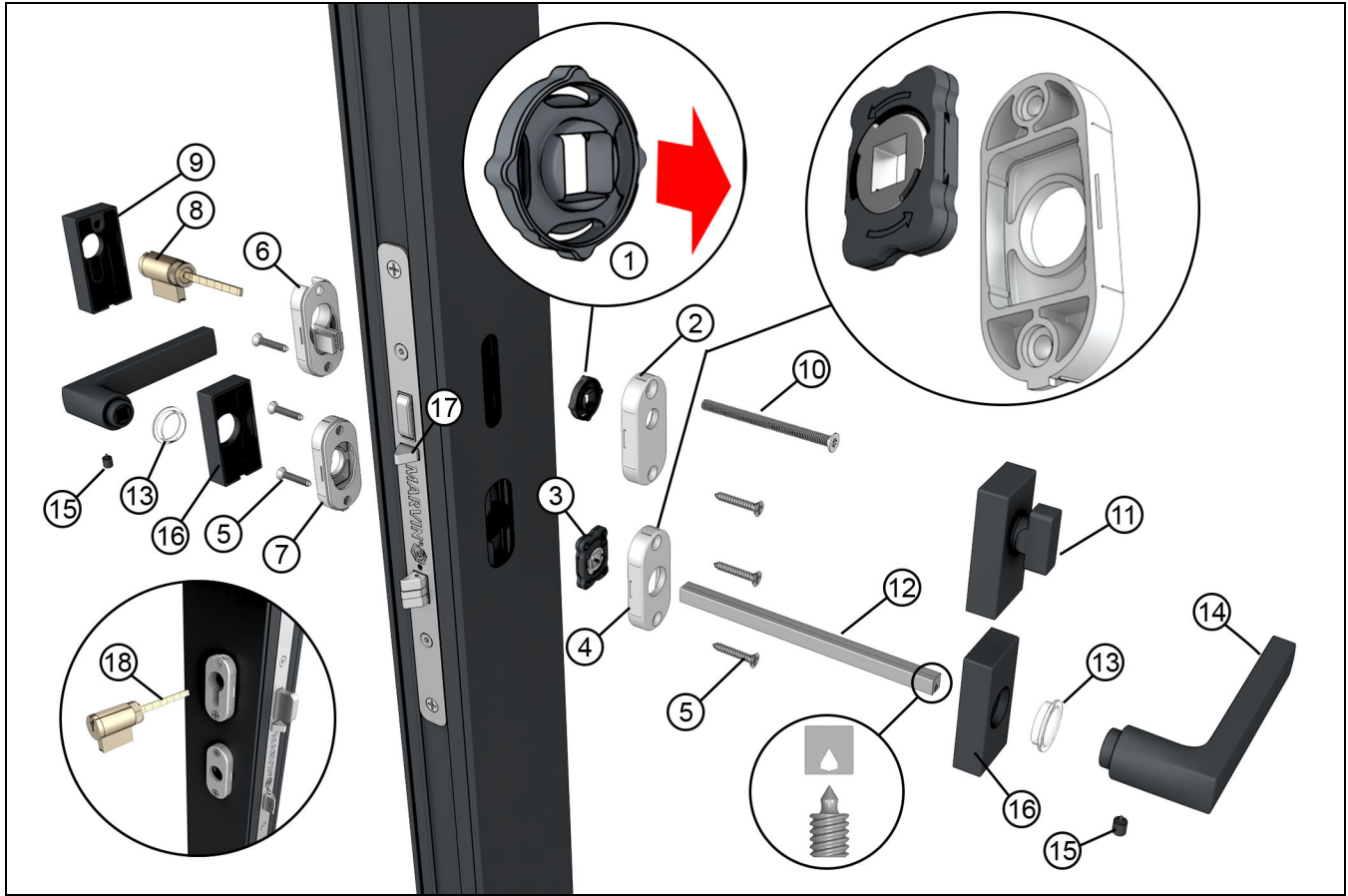


Figure 1

1	Thumb turn detent washer
2	Thumb turn mounting base
3	Lever assist spring
4	Handle mounting base
5	Sheet metal screws
6	Cylinder mounting base (with gasket)
7	Handle mounting base (with gasket)
8	Lock cylinder
9	Lock cylinder cover

10	Machine screw
11	Thumb turn
12	Spindle (2 piece)
13	Lever bushing
14	Handle
15	Set screws
16	Handle covers
17	Safety button
18	Lock cylinder pin

Attaching the Handle Trimset

Using a smartphone or similar device, scan the QR code or click [here](#) to play a video of this procedure.



1. Fit the thumb turn detent washer into the thumb turn mounting base. Note the orientation of the washer so the hollow side faces the mounting base. Ensure the detent washer is positioned with the square hole square to the mounting base.
2. Fit the lever assist spring into the interior handle mounting base. Note the arrows must be oriented in the same direction as your handle will rotate to unlatch the door (see inset in [Figure 1](#)).
3. Screw the mounting bases to the panel using the short sheet metal screws. Ensure the small plastic tabs are orientated downward. (See inset [Figure 1](#), base is shown from the back side). The mounting bases with gaskets will go on the exterior.
4. Slide the lock cylinder pin through the actuator slot in the vertical position.

NOTE: If the key cylinder on the handle does not actuate the deadbolt properly, DO NOT force the lock. Re-check the lock cylinder pin orientation. Remember to view rotation from the exterior (as the key would rotate).

5. Snap the lock cylinder cover (oriented with tab pointing down) over the cylinder mounting base and fasten with the machine screw from the interior.
6. Snap the thumb turn (oriented with tab pointing down) over the thumb turn base in the vertical position.

IMPORTANT

The thumb turn must be in the same orientation as the cylinder pin and the detent washer to ensure the square shaft goes into the square detent washer hole correctly.

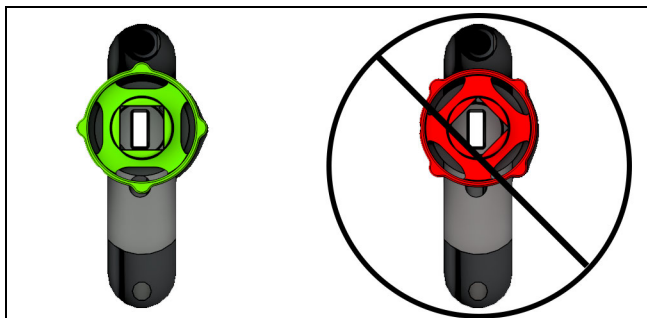


Figure 2 Note the orientation of the detent washer

7. Snap the handle covers (oriented with tab pointing down) onto the handle mounting bases.
8. Fit the two spindle halves together relative to the handle set screw. (See the inset above)
9. Slide the bushing and interior handle onto the spindle. Insert the spindle into the handle mounting base and through the lever assist spring and lock
10. Slide the lever bushing and exterior handle onto the spindle.
11. Sandwich the two handles until they seat tightly together, then secure the handles to the spindle by installing and tightening the set screws with the small end of the hex wrench until it begins to bend (about 30 in lbs)
12. Operate the multi-point by rotating the handles up and down. Press the safety button during handle rotation.

NOTE: Check the spring assist in handle to assure that the handle returns to the correct location when activated.

ATTENTION

Inactive sets are installed in a similar way as active sets except there will be no lock cylinder and thumb turn.

13. **To remove the handle covers:** use a small screwdriver to pry the cover off, releasing the cover from the tabs on the base. [See Figure 3](#). Use a wooden dowel or other non marking tool to gain more leverage.

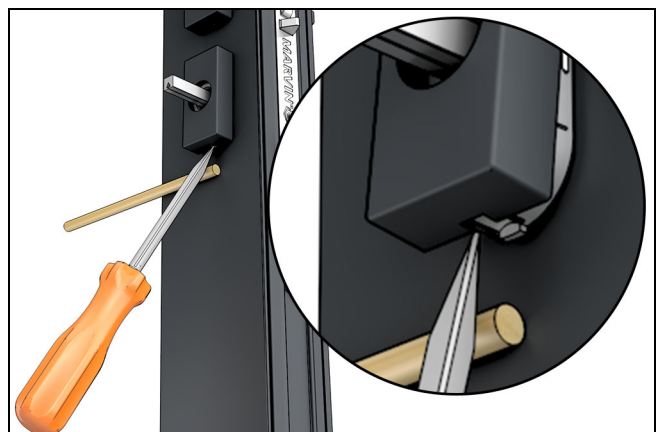


Figure 3