



# Ultimate Inswing French Door 2 1/4inch

DISC LA PRE 06/28/2021

## Replacement Parts

Specifications and technical data are subject to change without notice.

Numbers listed in ( ) parentheses are metric equivalents in millimeters rounded to the nearest whole number.

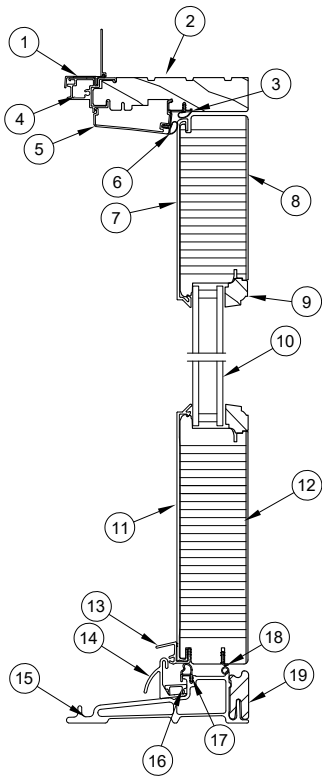
Suggested fasteners are not included and must be ordered separately.

Illustrations are not to scale.

## Contents

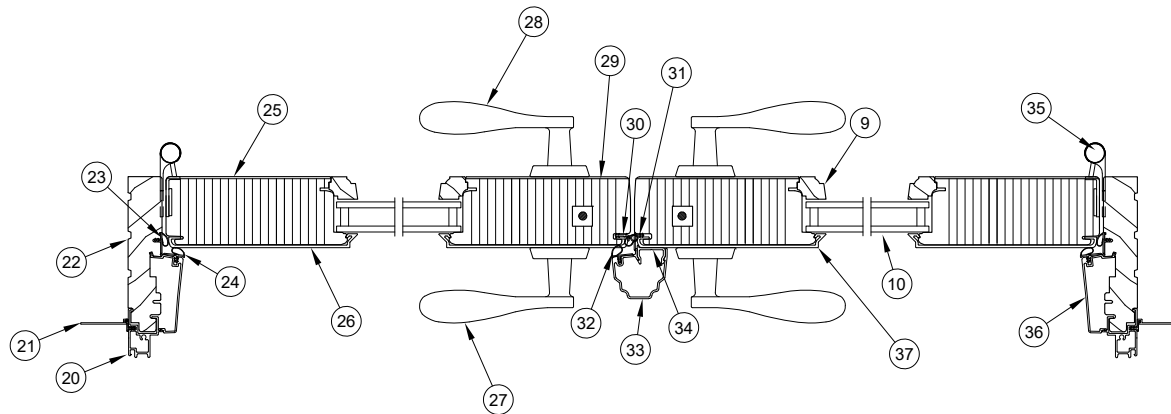
Product History.....	2
Part Identification.....	3
Installation Accessories.....	4
Traditional Handle.....	5
Contemporary Handle .....	10
Handle - Keyed Cylinder.....	15
Handle Set - Discontinued Limited Availability (LA).....	16
Hinge Handing Location .....	18
Hinges.....	19
Locking Hardware .....	21
Lock Status Sensor Parts.....	24
Miscellaneous Parts .....	25
Miscellaneous Parts - Discontinued No Longer Available (NA).....	26
Aluminum Parts .....	27
Fiberglass Parts.....	28
Wood Parts.....	29
Wood Parts - Discontinued - Limited Availability (LA).....	30
Vinyl Parts.....	31
Weather Strip .....	32
Panel Replacement .....	34
Screen Replacement - Configured Parts in OMS .....	35

Produced	Unit Type	Features and Changes
2005	Ultimate Inswing French Door 2 1/4inch DISC LA PRE 06/28/2021	5/31/2005: 2 1/4inch Panel IZ3 doors introduced. Units feature multi-point lock, LVL stiles and rails, and 4 1/2" x 4 1/2" ball bearing hinges. 9/06/2005: Introduced 2 1/4inch Panel door for IZ4.
2006	Ultimate Inswing French Door 2 1/4inch DISC LA PRE 06/28/2021	11/20/2006: Introduced the 2 1/4inch door as a standard residential product.
2007	Ultimate Inswing French Door 2 1/4inch DISC LA PRE 06/28/2021	2/20/07: Introduced raised and flat panels as a standard option.
2008	Ultimate Inswing French Door 2 1/4inch DISC LA PRE 06/28/2021	7/28/2008: Mixed grain Douglas fir is now a standard option.
2009	Ultimate Inswing French Door 2 1/4inch DISC LA PRE 06/28/2021	3/23/2009: Added LoE3-366 as a standard option for all products. Added Cedro Macho as a standard option for all Ultimate products.
2010	Ultimate Inswing French Door 2 1/4inch DISC LA PRE 06/28/2021	2/22/2010: Added Dark Bronze hardware finish to doors.
2011	Ultimate Inswing French Door 2 1/4inch DISC LA PRE 06/28/2021	4/25/2011: Added LoE-180 as a standard option for all products. White painted interior finish option introduced for all products.
2012	Ultimate Inswing French Door 2 1/4inch DISC LA PRE 06/28/2021	7/30/2012: Adjustable Hinge became standard. 10/29/2012: Interior Square Sticking/Glazing Bead option introduced. 12/17/2012: Introduced Clear Interior Finish option on all products.
2013	Ultimate Inswing French Door 2 1/4inch DISC LA PRE 06/28/2021	4/29/2013: Introduced interior stain options. Stain colors are Wheat, Honey, Leather, Hazelnut, Cabernet and Espresso. 12/16/2013: Interior Shades option introduced.
2014	Ultimate Inswing French Door 2 1/4inch DISC LA PRE 06/28/2021	2/24/2014: Introduced two Pearlescent colors (Bright Silver and Copper) and discontinued colors (Sherwood Green and Cobalt Blue) to the Ultimate Doors. Removed screen information and added new chapter for screen to manual. 4/28/2014: Added the Contemporary Panel and Contemporary Handle options. 6/23/2014: Added PVD color options for the Contemporary Handle; Oil Rubbed Bronze PVD and Satin Nickel PVD are now available. 8/25/2014: Panel drip and screws (A2408) will now match standard color. Screws for custom color will be stainless steel.
2016	Ultimate Inswing French Door 2 1/4inch DISC LA PRE 06/28/2021	10/31/2016: Discontinued the wood species Cedro Macho for all products.
2017	Ultimate Inswing French Door 2 1/4inch DISC LA PRE 06/28/2021	12/18/2017: Added availability of Lock Status Sensor.
2021	Ultimate Inswing French Door 2 1/4inch DISC LA PRE 06/28/2021	06/28/2021: Introduced the Ultimate Inswing French Door G2. 10/25/2021: Standard screen mesh changed to Marvin Bright View™. See Product Bulletin 793 for more details.
2025	Ultimate Inswing French Door 2 1/4inch DISC LA PRE 06/28/2021	02/24/2025: All interior shade component parts have been moved to No Longer Available. This parts section will be moved to the Internal only Discontinued Resources in MODL. See Product Bulletin 963 for more information.



Head Jamb and Sill Detail

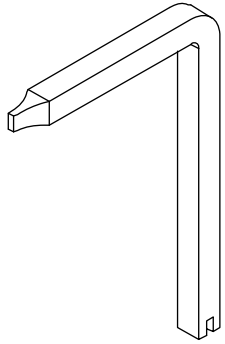
- |  |  |
|--|--|
| 1. Nailing Fin/Drip Cap, V119            | 20. Jamb Cladding                        |
| 2. Head Jamb                             | 21. Jamb Nailing Fin, V104               |
| 3. Head Jamb Weather Strip, V796         | 22. Jamb                                 |
| 4. Head Jamb Cladding                    | 23. Jamb Weather Strip, V796             |
| 5. Head Jamb Stop                        | 24. Jamb Stop Weather Strip, V780        |
| 6. Head Jamb Stop Weather Strip, V796    | 25. Stile                                |
| 7. Top Rail Cladding                     | 26. Stile Cladding                       |
| 8. Top Rail                              | 27. Exterior Handle                      |
| 9. Glazing Bead, W9949                   | 28. Interior Handle                      |
| 10. Insulating Glass                     | 29. Active Panel Locking Stile           |
| 11. Bottom Rail Cladding                 | 30. Stile Weather Strip, V020            |
| 12. Bottom Rail                          | 31. Mull Base Stile Weather Strip, V1706 |
| 13. Panel Drip, V940                     | 32. Astragal Weather Strip, V796         |
| 14. Hydro-Optimizer, A1251               | 33. Astragal, A772                       |
| 15. Sill                                 | 34. Astragal Base, A771                  |
| 16. Hydro-Optimizer Reinforcement, A1222 | 35. Adjustable Hinge                     |
| 17. Sill Weather Strip, V794             | 36. Side Jamb Parting Stop               |
| 18. Stile Weather Strip, V020            | 37. Inactive Panel Locking Stile         |
| 19. Sill Liner, W8661                    |  |



Jamb Detail XX-L

## Construction Handle

PN
10830451



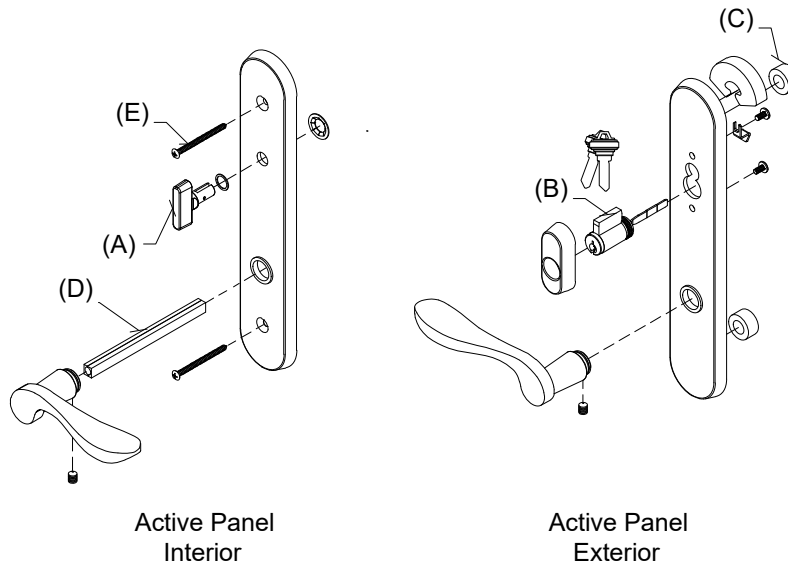
# Handle Assembly, Active, Keyed

Mortise Lock and Multi-Point Lock Systems (Schlage "C" Keyway)

## Includes:

- 1 - Interior lever with spindle, escutcheon plate and hardware
- 1 - Exterior lever with escutcheon plate and hardware
- 1 - Thumb turn with hardware (A)
- 1 - Keyed cylinder with housing and hardware, includes 2 keys (B)
- 1 - Exterior escutcheon plate gasket
- 2 - Lug Seal (C)
- 1 - Two piece spindle, 5.06" w/2 1/4" panel (D)
- 2 - #10-32 x 2 5/8" Phillips oval head machine screws (w/2 1/4" Panel) (E)

Handle Assembly - 2 1/4" Panel	
Color	PN
Satin Taupe	21448114
Antique Brass	21448116
White	21448119
Satin Chrome	21448112
Oil Rubbed Bronze	21448111
Oil Rubbed Bronze PVD	21448118
Brass PVD	21448160
Satin Nickel PVD	21448110
Dark Bronze	21448120
Polished Chrome	21448117
Matte Black	21448131



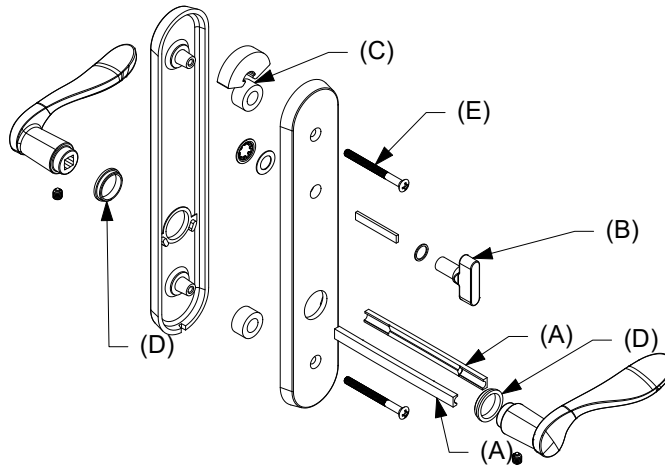
## Handle Assembly, Active, Non-Keyed

Mortise Lock and Multi-Point Lock Systems (Schlage "C" Keyway)

### Includes:

- 2 - Levers
- 2 - Lever bushings (D)
- 2 - Lug seals (C)
- 1 - Interior escutcheon
- 1 - Exterior escutcheon
- 1 - Thumb turn with actuator/tail piece (B)
- 1 - Two piece spindle, 5.06" w/2 1/4" panel (A)
- 2 - #10-32 x 2 5/8" Phillips oval head machine screws (w/2 1/4" Panel) (E)
- 2 - Set screws
- 1 - Allen wrench
- 1 - Installation instruction

Handle Assembly - 2 1/4" Panel	
Color	PN
Satin Taupe	21448174
Antique Brass	21448180
White	21448176
Satin Chrome	21448173
Oil Rubbed Bronze	21448172
Oil Rubbed Bronze PVD	21448170
Brass PVD	21448177
Satin Nickel PVD	21448181
Dark Bronze	21448178
Polished Chrome	21448175
Matte Black	21448179

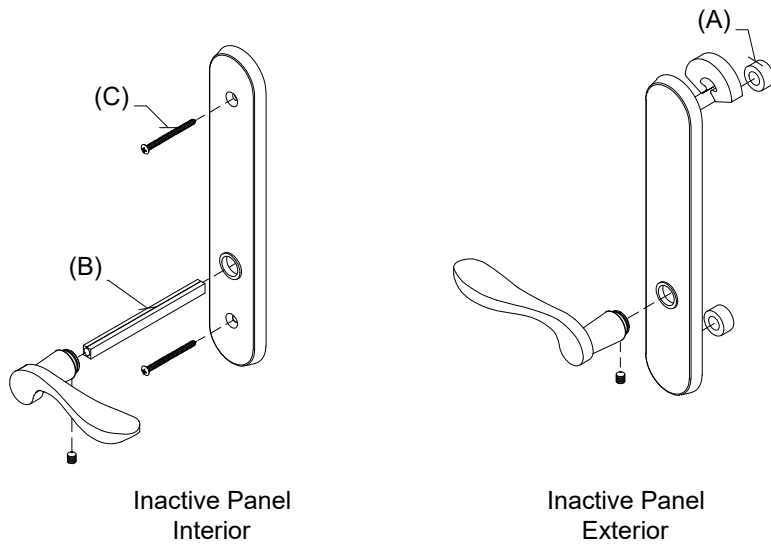


## Handle Assembly, Inactive/Dummy

### Includes:

- 1 - Interior lever with spindle, escutcheon plate and hardware
- 1 - Exterior lever with escutcheon plate and hardware
- 1 - Exterior escutcheon plate gasket
- 1 - Exterior escutcheon plate
- 2 - Lug seals (A)
- 1 - Two piece spindle, 5.06" (w/2 1/4" panel) (B)
- 2 - #10-32 x 2 5/8" Phillips oval head machine screws (w/2 1/4" Panel) (C)

Handle Assembly - 2 1/4" Panel	
Color	PN
Satin Taupe	21448151
Antique Brass	21448147
White	21448150
Satin Chrome	21448153
Oil Rubbed Bronze	21448154
Oil Rubbed Bronze PVD	21448145
Brass PVD	21448161
Satin Nickel PVD	21448133
Dark Bronze	21448162
Polished Chrome	21448148
Matte Black	21448163



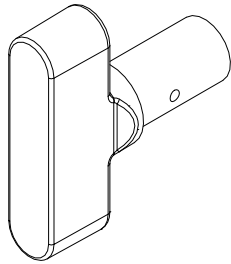
## Thumb Turn, Traditional

For Keyed Handle

### Includes:

Thumb Turn Washer  
Thumb Turn Push Nut

No Tail Piece/Actuator (for keyed handle)	
Color	PN
Antique Brass	10148483
Satin Chrome	10148482
Oil Rubbed Bronze	10148481
Oil Rubbed Bronze PVD	10148485
Polished Chrome	10148488
Brass PVD	10148484
Satin Nickel PVD	10148487
Satin Taupe	10148486
Dark Bronze	10148479
White	10148489
Matte Black	10148480



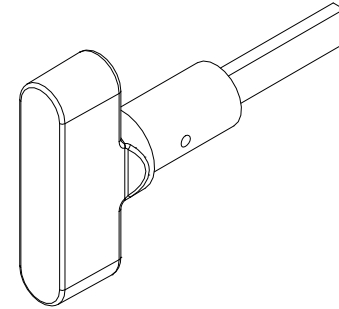
## Thumb Turn, Traditional with Actuator/Tail Piece

For Non-Keyed Handle

### Includes:

Actuator/Tailpiece  
Thumb Turn Washer  
Thumb Turn Push Nut

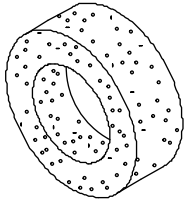
With Tail Piece/Actuator (for non-keyed handle)	
Color	PN
Antique Brass	10148495
Satin Chrome	10148494
Oil Rubbed Bronze	10148493
Oil Rubbed Bronze PVD	10148497
Polished Chrome	10148500
Brass PVD	10148496
Satin Nickel PVD	10148499
Satin Taupe	10148498
Dark Bronze	10148491
White	10148501
Matte Black	10148492





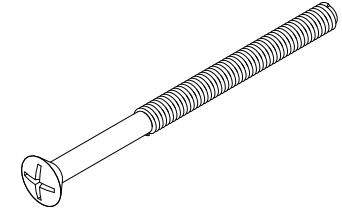
## Lug Seals

PN
00142046



## #10-32 x 2 5/8" Phillips Oval Head Machine Screw

Color	PN
Satin Taupe	11800237
Antique Brass	11800234
Satin Chrome	11800233
Polished Chrome	11800239
White	11800240
Oil Rubbed Bronze	11800232
Oil Rubbed Bronze PVD	11800236
Brass PVD	11800235
Satin Nickel PVD	11800238
Dark Bronze	11800231
Matte Black	11800179

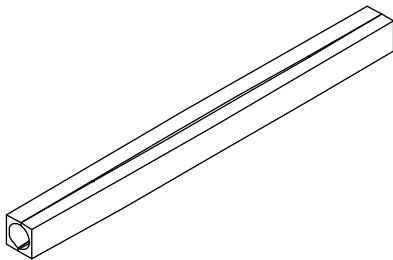


## Spindle/Spindle Extension Kit

### Includes:

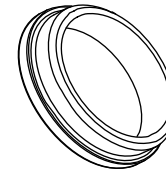
- 1 - 2 pc. Spindle
- 2 - Set screws

Spindle	
Length	PN
5.06"	18900393
5.812"	00142051



## Lever Bushing, Swinging Handle Set - Traditional

Color	PN
Clear	02062201
Gray	10148448
Gold	10148447
Natural	02062202
Black	10148020

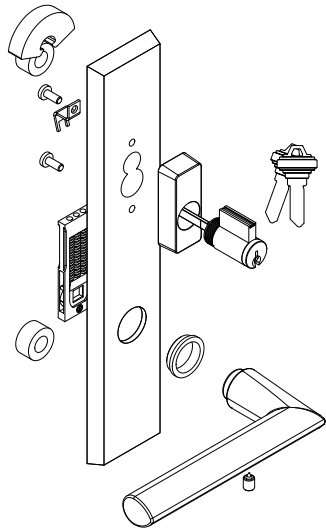


## Contemporary Handle, Exterior, Active, Keyed

### Includes:

- 1 - Handle
- 1 - Exterior escutcheon with bushing
- 1 - Keyed cylinder, includes 2 keys
- 2 - Lug seals
- 1 - Spring cartridge
- 1 - Set screw
- 1 - Installation instruction
- 1 - Hex wrench

LH Inswing Panel uses LH PN RH Inswing Panel uses RH PN		
Color	LH PN	RH PN
Matte Black	11870120	11870112
Satin Nickel PVD	11870122	11870114
Oil Rubbed Bronze PVD	11870124	11870116
Dark Bronze	11870126	11870118



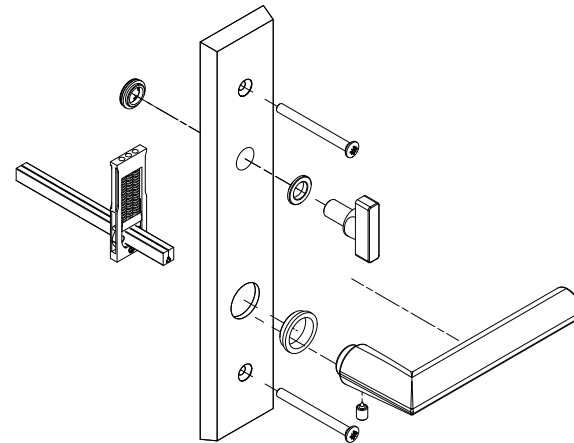
LH shown

## Contemporary Handle, Interior, Active, Keyed

### Includes:

- 1 - Handle
- 1 - Interior escutcheon with bushings
- 1 - Spring cartridge
- 1 - Thumb turn
- 2 - Machine screws, 2 1/4" Doors
- 2 - Machine screws, 1 3/4" Doors
- 1 - Split spindle, 2 1/4" Doors
- 1 - Split spindle, 1 3/4" Doors
- 1 - Set screw
- 1 - Installation instruction
- 1 - Hex wrench

LH Inswing Panel uses RH PN RH Inswing Panel uses LH PN		
Color	LH PN	RH PN
Matte Black	11870104	11870097
Satin Nickel PVD	11870106	11870098
Oil Rubbed Bronze PVD	11870108	11870100
Dark Bronze	11870110	11870102



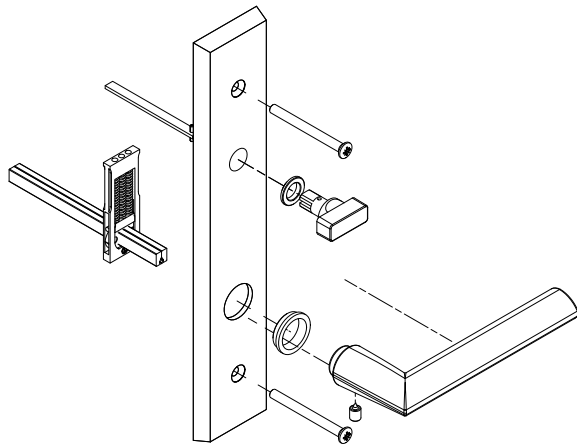
RH shown

# Contemporary Handle, Interior, Active, Non-Keyed

## Includes:

- 1 - Handle
- 1 - Interior escutcheon with bushings
- 1 - Spring cartridge
- 1 - Thumb turn
- 2 - Machine screws, 2 1/4" Doors
- 2 - Machine screws, 1 3/4" Doors
- 1 - Split spindle, 2 1/4" Doors
- 1 - Split spindle, 1 3/4" Doors
- 1 - Set screw
- 1 - Installation instruction
- 1 - Hex wrench

LH Inswing Panel uses RH PN RH Inswing Panel uses LH PN		
Color	LH PN	RH PN
Matte Black	11870136	11870128
Satin Nickel PVD	11870138	11870130
Oil Rubbed Bronze PVD	11870139	11870132
Dark Bronze	11870143	11870133



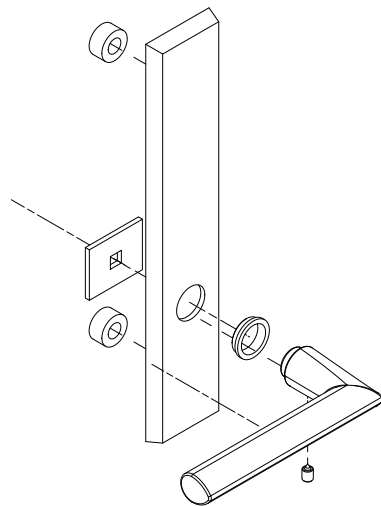
RH shown

## Contemporary Handle, Exterior, Non-Keyed, Inactive/Dummy

### Includes:

- 1 - Handle
- 1 - Exterior escutcheon with bushings
- 2 - Lug seals
- 1 - Fixing plate
- 1 - Set screw
- 1 - Installation instruction
- 1 - Hex wrench

LH Inswing Panel uses LH PN RH Inswing Panel uses RH PN		
Color	LH PN	RH PN
Matte Black	11870153	11870145
Satin Nickel PVD	11870154	11870146
Oil Rubbed Bronze PVD	11870156	11870148
Dark Bronze	11870158	11870149



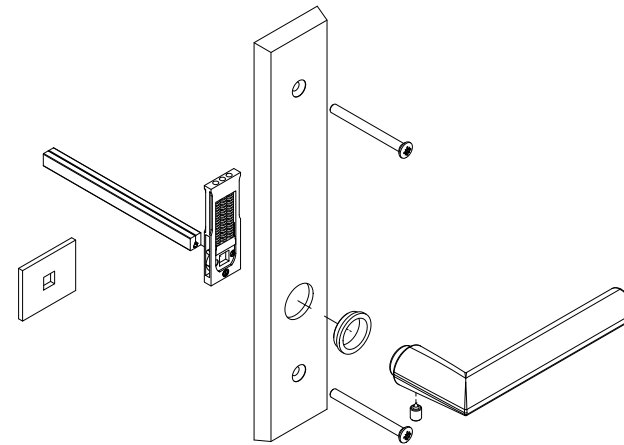
LH shown

## Contemporary Handle, Interior, Inactive/Dummy

### Includes:

- 1 - Handle
- 1 - Escutcheon with bushing
- 1 - Dummy fixing plate
- 1 - Spring cartridge
- 2 - Machine screws, 2 1/4" Doors
- 2 - Machine screws, 1 3/4" Doors
- 1 - Split spindle, 2 1/4" Doors
- 1 - Split spindle, 1 3/4" Doors
- 1 - Set screw
- 1 - Installation instruction
- 1 - Hex wrench

LH Inswing Panel uses RH PN RH Inswing Panel uses LH PN		
Color	LH PN	RH PN
Matte Black	11870169	11870160
Satin Nickel PVD	11870171	11870162
Oil Rubbed Bronze PVD	11870172	11870164
Dark Bronze	11870174	11870166



RH shown

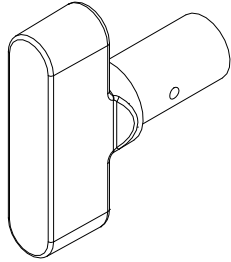
## Thumb Turn, Contemporary

For Keyed Handle

### Includes:

Thumb Turn Washer  
Thumb Turn Push Nut

No Tail Piece/Actuator (for keyed handle)	
Color	PN
Oil Rubbed Bronze PVD	10148485
Satin Nickel PVD	10148487
Dark Bronze	10148479
Matte Black	10148480



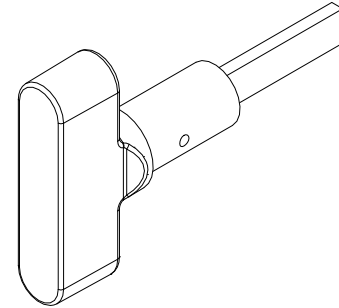
## Thumb Turn, Contemporary with Actuator/Tail Piece

For Non-Keyed Handle

### Includes:

Actuator/Tailpiece  
Thumb Turn Washer  
Thumb Turn Push Nut

With Tail Piece/Actuator (for non-keyed handle)	
Color	PN
Oil Rubbed Bronze PVD	10148497
Satin Nickel PVD	10148499
Dark Bronze	10148491
Matte Black	10148492



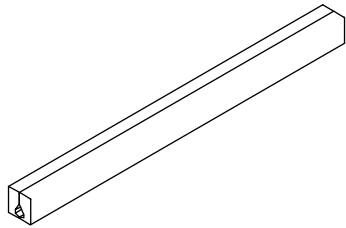
## Spindle Kit

### Includes:

- 1 - 2 pc. spindle
- 2 - Set screws

NOTE: Longer length spindles are intended for use with the 3/4" Handle Extension.

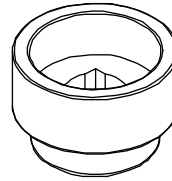
2 1/4" Panels	
Length	PN
5 1/8"	10148458
5 29/32"	10148459



## 3/4" Handle Extension

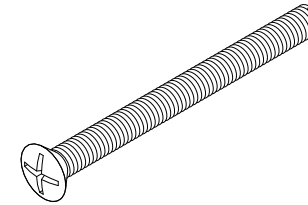
Requires 3/4" Spindle Extension

Color	PN
Oil Rubbed Bronze PVD	10148421
Satin Nickel PVD	10148422
Dark Bronze	10148420
Matte Black	10148445



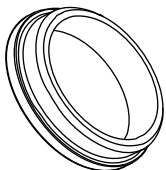
## M5 x 65mm Phillips Oval Head Machine Screw

Color	PN
Oil Rubbed Bronze PVD	10148456
Satin Nickel PVD	10148457
Dark Bronze	10148455
Matte Black	11800694



## Lever Bushing, Swinging Handle Set, Contemporary

Color	PN
Gray	10148448
Natural	02062202
Black	10148020



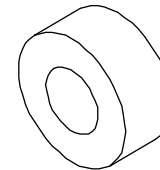
## Spring Cartridge, Swinging Handle Set, Contemporary

PN
10830452



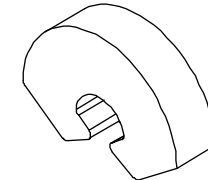
## Gasket Post

PN
10148404



## Gasket - Top Backplate

PN
10148405



## Keyed Cylinder, Lock

(Schlage "C" Keyway)

For service replacement only.

### Includes:

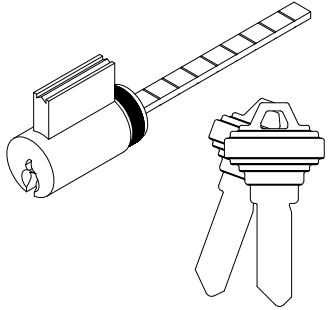
2 - Keys

NOTE: For Keyed Alike orders, use program C87P2

Polished Chrome, White, Satin Nickel PVD, Matte Black use  
Chrome Face

Satin Taupe, Antique Brass, Satin Chrome, Oil Rubbed  
Bronze, Oil Rubbed Bronze PVD, Brass PVD, Dark Bronze  
use Brass Face

Color	PN
Brass	10830212
Chrome	10830209

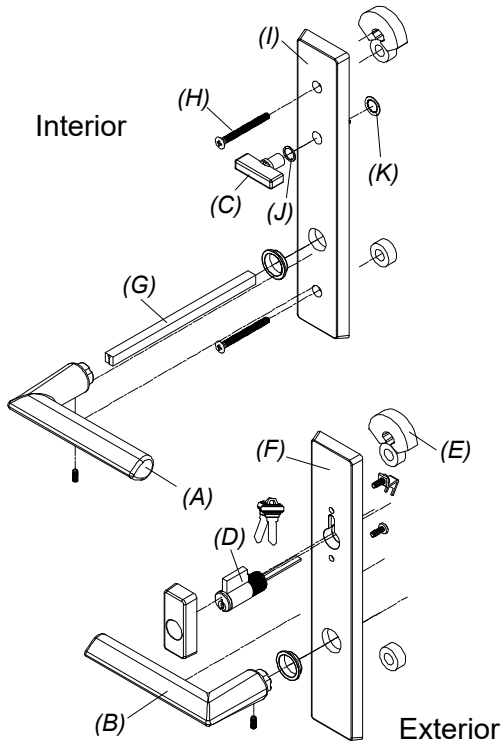


## Handle Assembly, Active Panel

### Includes:

- 1 - Interior lever with spindle, escutcheon plate and hardware - A
- 1 - Exterior lever with escutcheon plate and hardware - B
- 1 - Thumb turn with hardware - C
- 1 - Keyed cylinder with housing and hardware, includes 2 keys - D
- 1 - Exterior escutcheon plate gasket - E
- 1 - Exterior escutcheon plate - F
- 1 - Two piece spindle - G
- 2 - M5 x 65mm Phillips oval head machine screws - H
- 1 - Interior escutcheon plate - I
- 1 - Thumb turn washer - J
- 1 - Thumb turn push nut - K

Color	PN
Satin Taupe	21448121

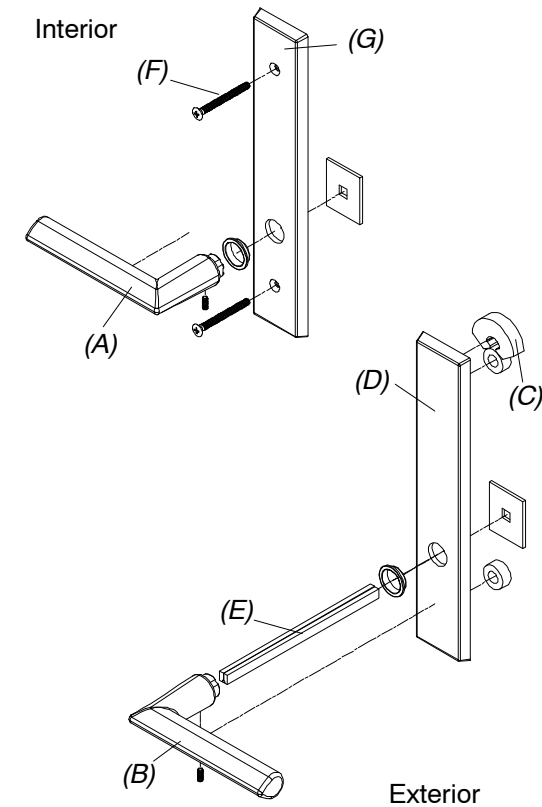


## Handle Assembly, Inactive

### Includes:

- 1 - Interior lever with spindle, escutcheon plate and hardware - A
- 1 - Exterior lever with escutcheon plate and hardware - B
- 1 - Exterior escutcheon plate gasket - C
- 1 - Exterior escutcheon plate - D
- 1 - Two piece spindle - E
- 2 - M5 x 65mm Phillips oval head machine screws - F
- 1 - Interior escutcheon plate - G

Color	PN
Satin Taupe	21448125

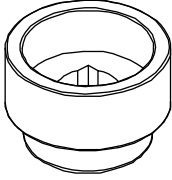




## 3/4" Handle Extension

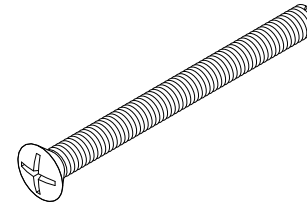
Requires 3/4" Spindle Extension

Color	PN
Satin Taupe	10148419

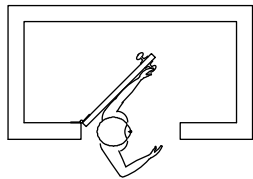


## M5 x 65mm Phillips Oval Head Machine Screw

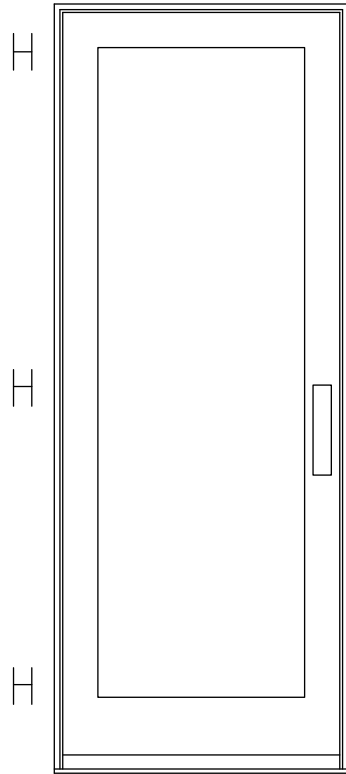
Color	PN
Satin Taupe	10148454



**NOTE: Always view units from the exterior for handing.**  
**H=Hinge location**

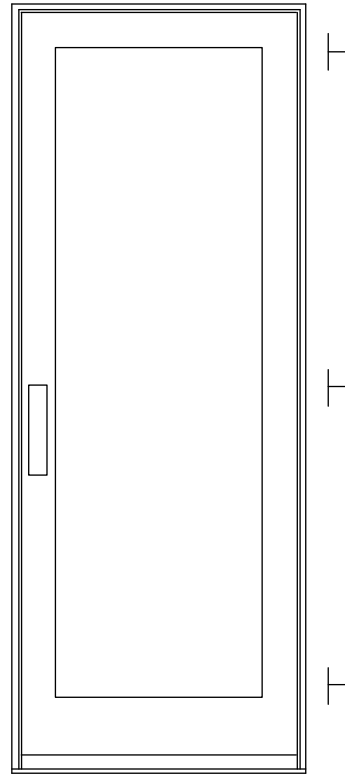


**LH Inswing**



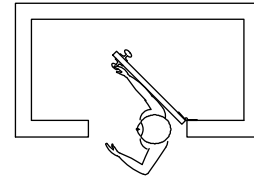
**X-LH Inswing**

This panel uses the left hand hinge



**X-RH Inswing**

This panel uses the right hand hinge



**RH Inswing**

# Hinge Kit, Adjustable

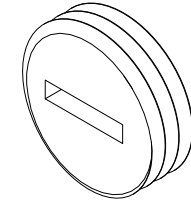
## Includes:

- 1 - Adjustable hinge
- 1 - #10 x 2 1/2" Phillips flat head wood screws (jamb)
- 5 - #10 x 3/4" Phillips flat head wood screws (jamb, stationary stile)
- 4 - #8 x 1 1/2" Phillips flat head wood screws (panel)

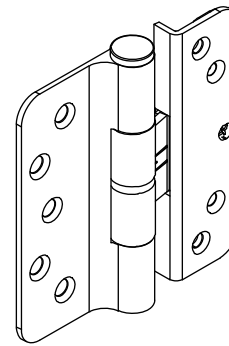
NOTE: Hinge part number includes the color matched screws, If you need to order the screws separately, they are listed below.

## Adjustment Cover, Adjustable Hinge

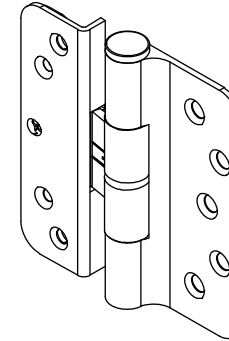
<b>PN</b>
11844039



Adjustable Hinge Package - Color and Part Number			Matching Screw Color
Hinge Color	LH PN	RH PN	
Satin Taupe (TP)	02101216	02101227	TP
Goldtone (GT)	02101213	02101224	GT
Silver Frost (SF)	02101218	02101229	Stainless Steel
Dark Bronze (DKBZ)	02101217	02101228	DKBZ
Antique Brass (AB)	02101210	02101221	DKBZ
White (WH)	02101214	02101225	WH
Satin Chrome (SC)	02101212	02101223	Stainless Steel
Oil Rubbed Bronze (ORBZ)	02101219	02101230	DKBZ
Oil Rubbed Bronze PVD (ORBZ)	02101211	02101222	DKBZ
Brass PVD (BS)	02101215	02101226	BS PVD
Satin Nickel (SN) PVD	02101220	02101231	Stainless Steel
Polished Chrome (PC)	02101234	02101235	Stainless Steel
Matte Black (MBK)	02101236	02101237	MBK



LH Hinge



RH Hinge

Individual Screw Description	Color and Part Number							
	TP	GT	WH	DKBZ	BS PVD	Stainless Steel	Chrome	MBK
#8 x 1 1/2" Phillips flat head wood screws (panel). 4 - per hinge.	11865177	11865172	11865173	02058013	11865176	11865175		11865178
#10 x 3/4" Phillips flat head wood screws (jamb) (stationary stile). 5 -per hinge.	11800674	11800670	11800671	11800669	11800673		11800672	11800677
#10 x 2 1/2" Phillips flat head wood screws (jamb). 1 - per hinge.	11800653	11800632	11800637	11800644	10148185	11800639		11800696
NOTE: Part numbers for these screws are sold in packages of 4 screws and includes 1 - 5/32" Allen wrench. (Long Hinge Screw Package)								

## Hinge 4 1/2" x 4 1/2" Ball Bearing

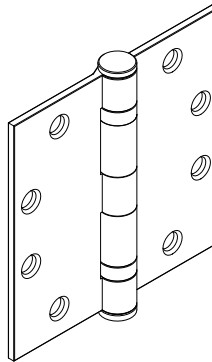
### Includes:

- 1 - Hinge
- 6 - #12 x 1" Phillips flat head wood screws
- 2 - #12 x 2 1/2" Phillips flat head screws

NOTE: Hinge part number includes the color matched screws, if you need to order the screws separately, they are listed below.

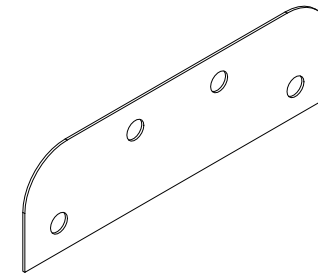
Hinge Color	PN
Stainless Steel	02100162
Satin Chrome/Brass	02101166
Bronze/Brass	02101167
Brass	02101165
<b>Steel hinge available for Inswing Doors only</b>	
Satin Chrome/Steel	02101163
Bronze/Steel	02101164

Screw Description	Color	PN
#12 x 1" Phillips flat head wood screws	Stainless Steel	02056069
	Dark Bronze	02056010
	Brass	02056068
#12 x 2 1/2" Phillips flat head screws	Stainless Steel	02010311
	Dark Bronze	02056067
	Brass	02010310



## 4 1/2" x 4 1/2" Hinge Shim

PN
18900502



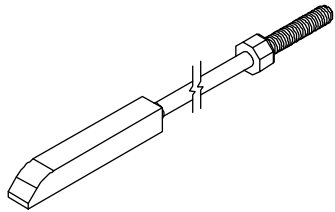
Hinge Color	Screw Color
Stainless Steel	Stainless Steel
Satin Chrome/Steel	
Satin Chrome/Brass	
Bronze/Steel	Dark Bronze
Bronze/Brass	
Brass	Brass

SC = US26D
BZ = US10A
BS = US3
SS = US32D

## Locking Rod Assembly, Multi-Point Lock

Height	Top Locking Rod Length	Color	PN
CN 8-0 ht	51 7/16"	Stainless Steel	05700179
CN 10-0 ht	75 7/16"		05700196

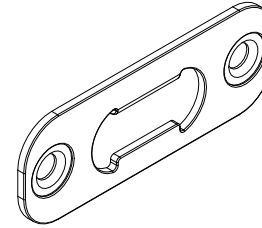
Height	Bottom Locking Rod Length	Color	PN
CN 8-0 ht	34 9/32"	Stainless Steel	05700170
CN 10-0 ht			



## Strike Plate, Sill/Head Jamb

NOTE: Used at sill

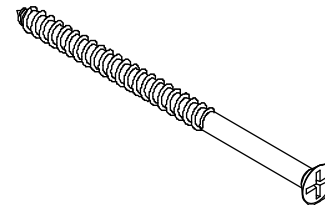
PN
10815201



## #10 x 3" Phillips Flat Head Screws

For Strike Plate, Sill/Head Jamb

Color	PN
Stainless Steel	02056011

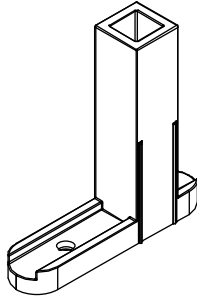


## Shoot Bolt Guide

### Includes:

- 1 - Shoot bolt guide
- 1- #8 x 1 1/2" Phillips pan head wood screw

PN
10815199

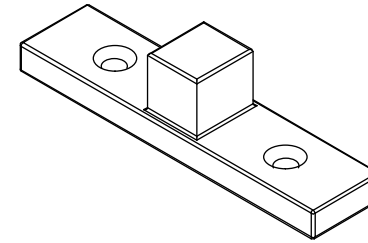


## Sill Bolt, Stationary Panel

### Includes:

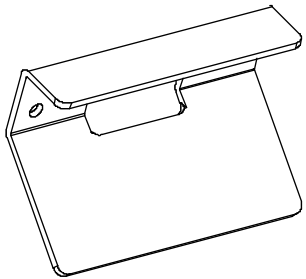
- 2- #8 x 3" Phillips flat head wood screw

Color	PN
Zinc Die Cast	11101856



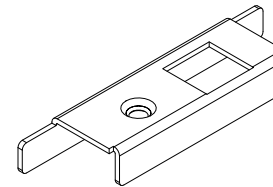
## Sill Strike Backer Plate

PN
10148009



## Stile End Plate

Handing	PN
LH	10148008
RH	10148007



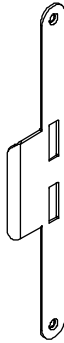
## Strike Plate, Jamb and Inactive Panel - Mortise Lock or Multi-Point Lock

### Includes:

- 1 - Jamb strike plate
- 2 - #8x1" Brass Phillips flat head wood screws

Note: Dark Bronze screws are used with Antique Brass and Oil Rubbed Bronze PVD

Color	PN
Stainless Steel	05700300
Antique Brass	05700301
Oil Rubbed Bronze PVD	05700302
Brass PVD	10148177



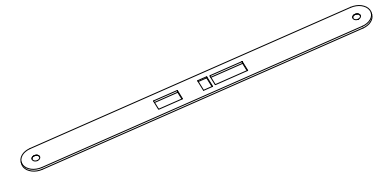
## Cover Plate, Active Mortise Lock or Multi-Point Lock

### Includes:

- 1 - Cover plate
- 2 - #8 x 1" Brass Phillips flat head wood screws

Note: Dark Bronze screws are used with Antique Brass and Oil Rubbed Bronze PVD

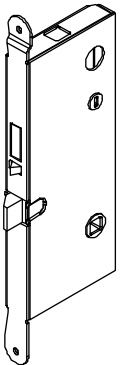
Color	PN
Stainless Steel	05700306
Antique Brass	05700307
Oil Rubbed Bronze PVD	05700308
Brass PVD	10148179



## Mortise Lock, Active Multi-Point Lock

(Latch, dead bolt and head/foot shoot bolts)

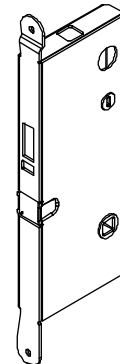
PN
05700130



## Mortise Lock, Inactive Panel Multi-Point Lock

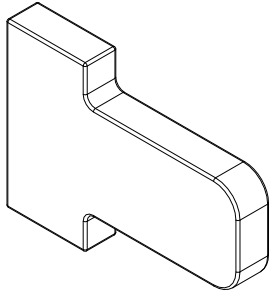
(Head/foot shoot bolts)

PN
05700131



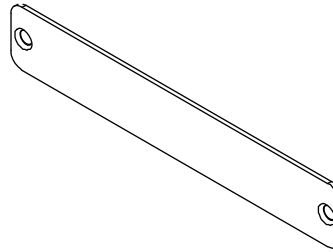
### Tailpiece, Non-keyed, Button Switch

Color	PN
Stainless Steel	10501844



### Cover, Transmitter

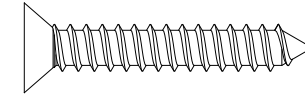
Color	PN
Brushed Stainless Steel	10501822



### #8-18 x 1" Type AB, Full Thread

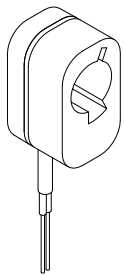
Used for Transmitter Cover  
Need quantity of 2 for each part

PN
11800769



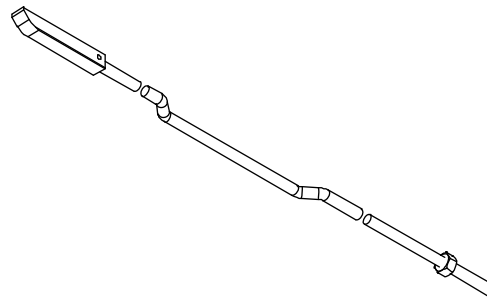
### Micro Switch Assembly

Color	PN
Black	10501824



### Lock Rod, Transmitter Recess, Shoot Bolt

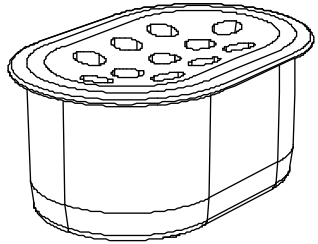
Color	LH PN	RH PN
Brushed Stainless Steel	10501838	10501841





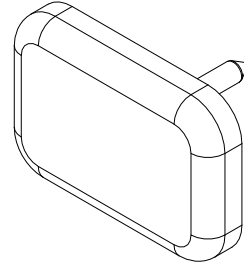
## Drain Plug, Sill

Color	PN
Beige	10500253
Bronze	10500249



## Head Jamb Spacer Tack; Stationary Panel

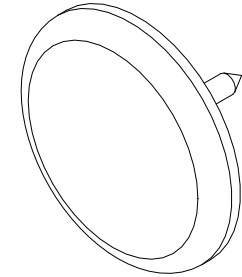
PN
11860424



## Jamb Spacer Tack, Stationary Panel

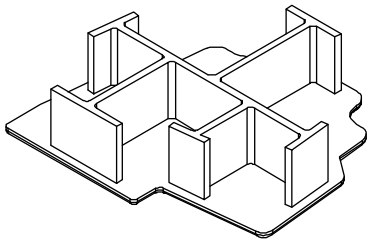
3/4" Diameter Head

PN
11860423



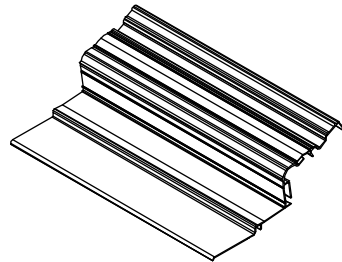
## Mull Casing End Plug, Ultimate

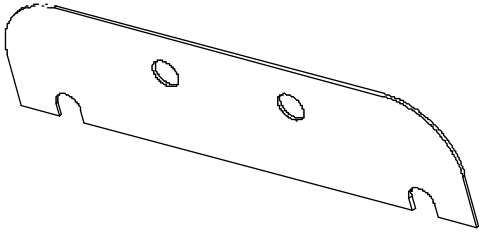
Color	LH PN	RH PN
Beige	10500255	10500254
Bronze	10500267	10500266



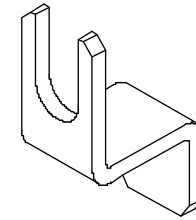
## Threshold Protector

Length	U/M	PN
30"	EA	11869675
	Pkg 20	11869676

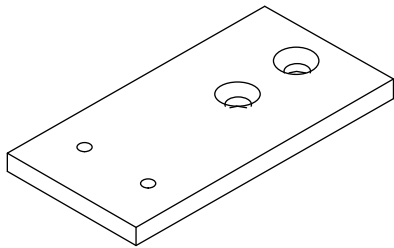




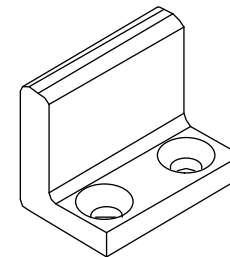
**4 1/2" x 4 1/2" Hinge Shim Ultimate Frame**  
No longer available. Use current part.



**Stop clip with screws**  
No longer available. Use current part.



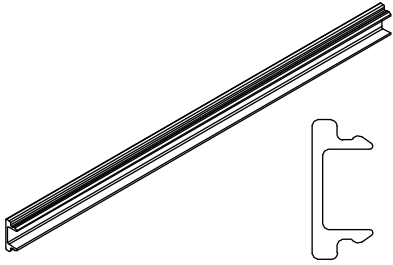
**Header Reinforcement Plate, IZ4**  
No longer available. Use current part.  
Usage dates: Prior to 8/31/2009



**Header Reinforcement Bracket**  
No longer available. Use current part.  
Usage dates: Prior to 8/31/2009

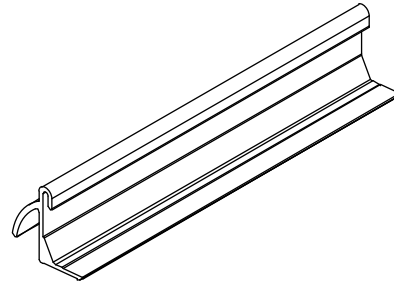
## Hydro-Optimizer Reinforcement, Inswing

Length	Color	PN
144"	Beige	18548499
	Bronze	18548399

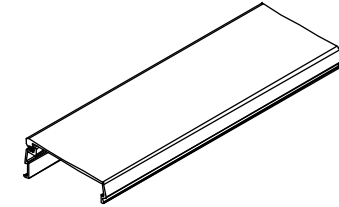


### When ordering replacement parts, specify:

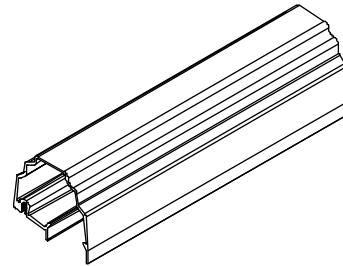
1. Profile number;
2. rough opening;
3. length;
4. handing;
5. finish (where applicable).



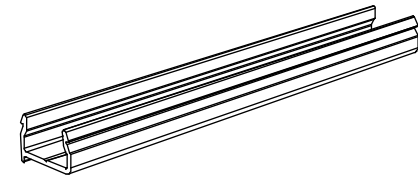
**Hydro-Optimizer, A1251**  
Available in Beige or Bronze



**Head Jamb/Jamb Parting Stop, A836**



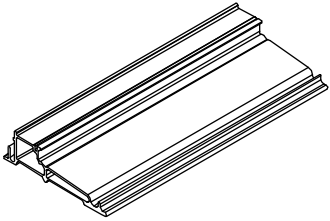
**Astragal Cladding, A772**



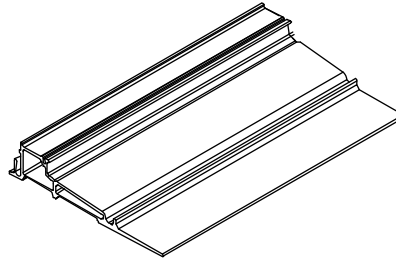
**Mullion Casing Base, A771**

**When ordering replacement parts, specify:**

1. Profile number;
2. Rough opening;
3. Length;
4. Handing;
5. Finish (where applicable),



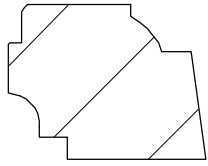
**Ultrex Sill, 4 9/16" Jamb. F256**  
Available in Beige or Bronze



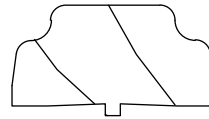
**Ultrex Sill, 6 9/16" Jamb, F257**  
Available in Beige or Bronze

**When ordering replacement parts, specify:**

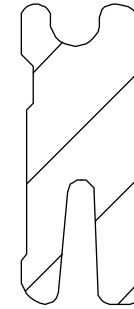
1. Profile number;
2. Rough opening;
3. Length;
4. Handing;
5. Finish (where applicable),



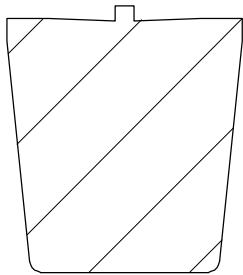
**Glazing Cap, W9949**



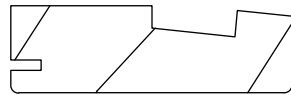
**Astragal Cover and Transom Mull Cover,  
W7554**



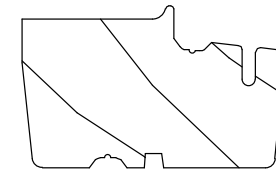
**Sill Liner (Oak), W8661**



**Mull Casing, W8775**



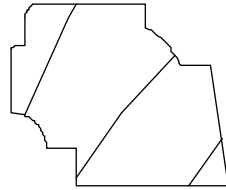
**Head Jamb/Jamb Parting Stop, W6535**



**First Mull Casing and Astragal, W1455**

**When ordering replacement parts, specify:**

1. Profile number;
2. Rough opening;
3. Length;
4. Handing;
5. Finish (where applicable),

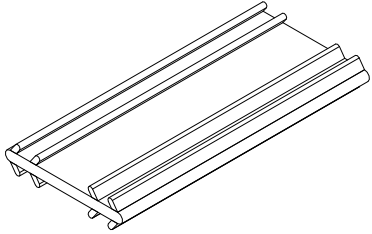


**Glazing Cap Used prior to May 2008, W4019**

## Connecting Barb

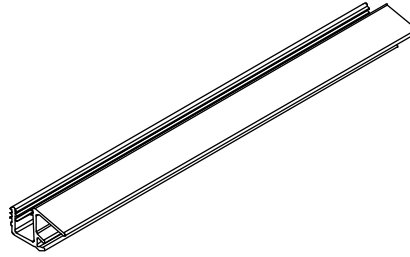
V803

Length	PN
Specify Length	15812999



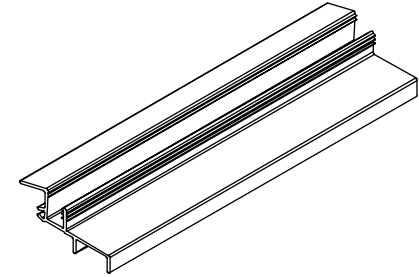
## When ordering replacement parts, specify:

1. Profile number;
2. Rough opening;
3. Length;
4. Handing;
5. Finish (where applicable),



### Panel Drip, Inswing, V940

Available in Beige or Black



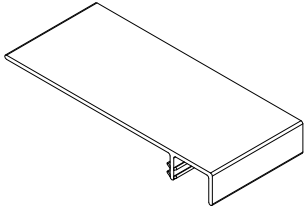
### Stationary Panel Drip/Sill Spacer, Inswing, V941

Available in Beige or Black

## Weather Strip, Frame

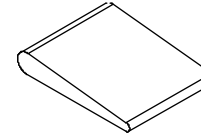
V1707

Length	Color	PN
120"	Beige	11191299
	Black	11191399



## Small Corner Seal

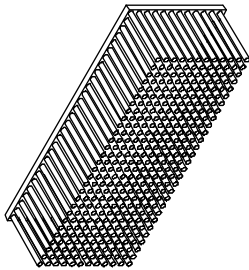
Color	PN
Beige	01040368
Black	01040369



## Dust Block, Part Stop

1 3/8" x 3/8" x 1/2"

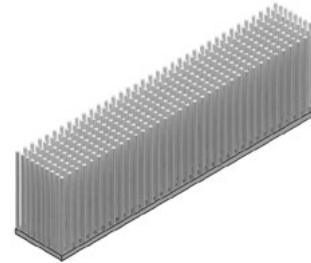
Color	PN
Gray	15600010
Beige	15600011



## Dust Block, Astragal or Panel

1 3/8" x 1/4" x 1/2"

PN
10500049



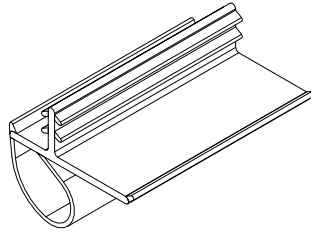


## Offset Bulb Weather Strip

V796

Parting Stop, Frame, Mull Casing, Transom and Astragal

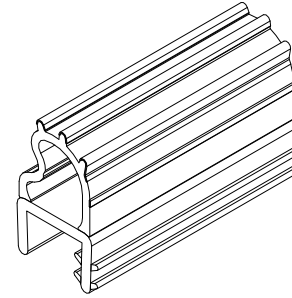
Length	Color	PN
75 43/64"	Beige	15170866
	Black	15170867
104 7/8"	Beige	15170090
	Black	15170091
115 41/64"	Beige	15170810
	Black	15170811
189 11/16"	Beige	15173298
	Black	15173398



## Flex-Bulb Weather Strip, Sill

V794

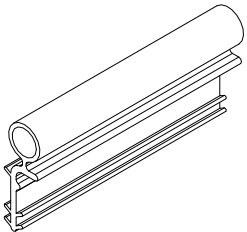
Length	Color	PN
92 3/4"	Beige	15180780
164 3/4"	Beige	15180798
164 3/4"	Black	15180799



## Weather Strip, Stile

V020

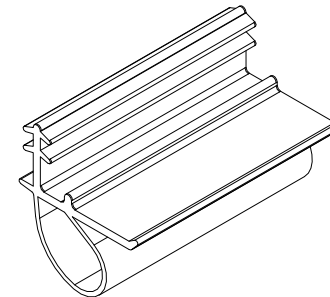
Length	Beige PN	Black PN
79 9/16"	11197968	N/A
92 15/16"	11197982	N/A
150"	11197999	11197998



## Inactive Panel Stile Center

V780

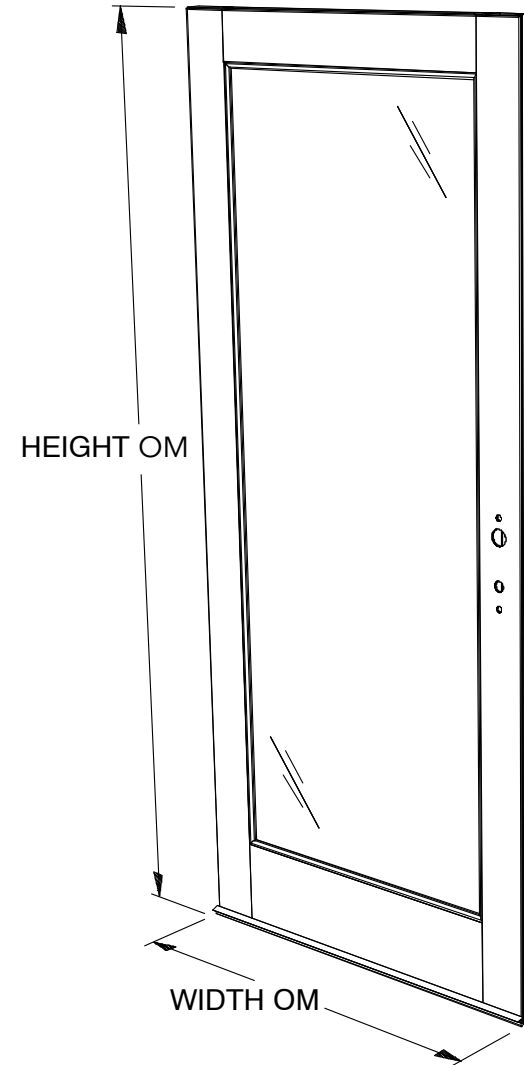
Length	Color	PN
150"	Beige	15174099
	Black	15174098



## When ordering replacement panels, specify:

NOTE: Weather strip is included with all panels (where applicable).

1. OM of panel (NOTE: OM of panel does not include astragal, mull casing or sweep);
2. Active, Inactive or Stationary;
  - a. Active - comes prepped for multi-point mortise lock and standard Marvin handle set. If Marvin Architectural Hardware prep is needed, specify brand.
  - b. Inactive - comes prepped for multi-point lock and standard Marvin handle-set. If Marvin Architectural Hardware prep is needed, specify brand.
  - c. Stationary - specify configuration and astragal or mull casing (if applicable).
  - d. Panel style
3. Handing;
4. Glazing;
5. Finish;
6. Glazing bead profile
  - a. bevel
  - b. square.
    - Active panels include panel sweep and multi-point mortise lock system.
    - Inactive panels include sweep, astragal, and multi-point lock system.
    - Stationary 1 wide panels include panel sweep.



Refer to Configured Parts in OMS for full screen replacement.  
Individual screen replacement parts are available in the Ultimate Screens G2 (Door Screens) section.