



# Ultimate MultiSlide Door

## Replacement Parts

Specifications and technical data are subject to change without notice.

Numbers listed in ( ) parentheses are metric equivalents in millimeters rounded to the nearest whole number.

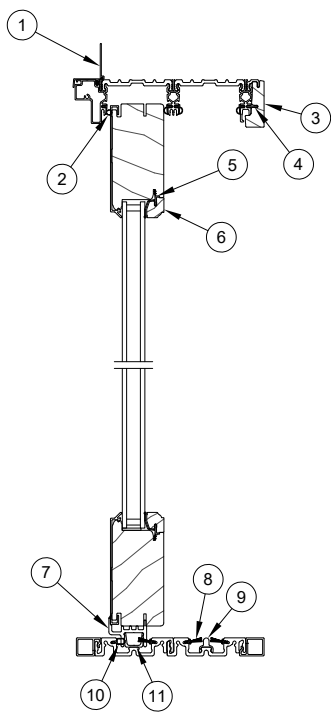
Suggested fasteners are not included and must be ordered separately.

Illustrations are not to scale.

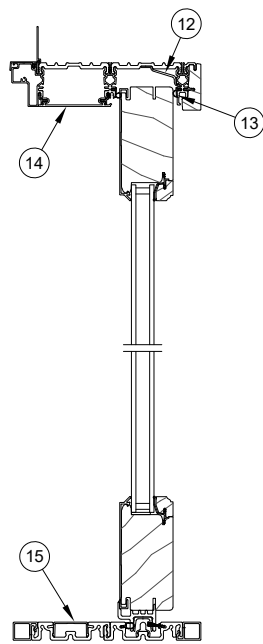
## Contents

|   |    |
|---|----|
| Product History.....  | 2  |
| Part Identification - Stacked - OX-XO L or R.....                     | 3  |
| Part Identification - Stacked XXO/OXX.....                            | 4  |
| Part Identification - Stacked XOX.....                                | 5  |
| Part Identification - Pocket PX-XP L or R.....                        | 6  |
| Part Identification - Pocket PXXXX/XXXXP.....                         | 7  |
| Part Identification - Stacked Corner - OXCXO.....                     | 8  |
| Installation Parts.....   | 9  |
| Installation Parts - Discontinued - No Longer Available (NA).....     | 12 |
| Handles.....  | 13 |
| Operators.....  | 14 |
| Locking Hardware.....   | 15 |
| Lock Status Sensor Parts.....   | 17 |
| Automatic Control Parts.....  | 18 |
| Automatic Control Parts - Locally Sourced.....                        | 21 |
| Miscellaneous Parts.....  | 22 |
| Miscellaneous Parts - Discontinued - No Longer Available (NA).....    | 27 |
| Aluminum Parts.....   | 28 |
| Wood Parts - Fabricated.....  | 29 |
| Vinyl Parts.....  | 33 |
| Vinyl Parts - Fabricated.....   | 34 |
| Weather Strip.....  | 35 |
| Weather Strip - Fabricated.....                                       | 36 |
| Weather Strip - Discontinued - No Longer Available (NA).....          | 37 |
| Replacement Sills.....  | 38 |
| Replacement Panels.....   | 39 |
| Screen Handing Diagram.....   | 40 |
| Retractable Screen SE4 Parts - Configured in OMS.....                 | 41 |
| Retractable Screen SE4 Parts.....                                     | 42 |
| Scenic Door Sliding Screen Discontinued Parts Pre 4/27/20 - (LA)..... | 45 |

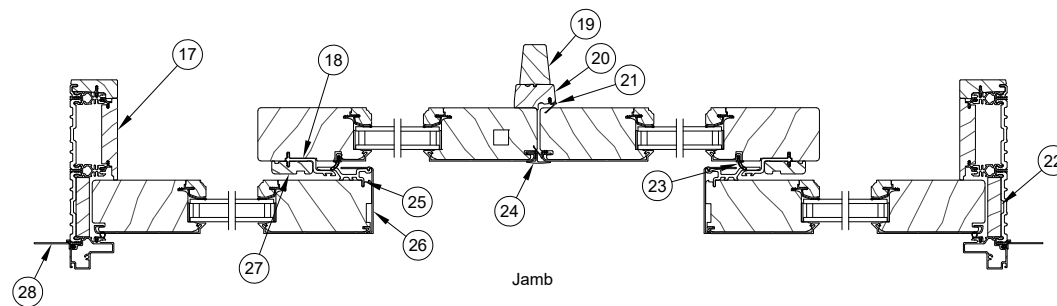
| Produced | Unit Type                | Features and Changes  |
|----------|--------------------------|---|
| 2015     | Ultimate MultiSlide Door | 4/27/2015: Released the Ultimate MultiSlide Door. Available in Stacked or Pocket configurations with 4 3/4" stiles and rails.<br>8/31/2015: Introduced the Scenic Door Ultimate Sliding Screen.<br>10/26/2015: Adding IZ3 and High Performance Sill DP50 rated options.                   |
| 2016     | Ultimate MultiSlide Door | 2/29/2016: Introduced new XOX configuration.<br>4/25/2016: Introduced new Sliding Door Automatic Control Device.<br>8/29/2016: Introduced 9–0 call number heights   |
| 2017     | Ultimate MultiSlide Door | 8/28/2017: Introduced Matte Black Hardware. Added Black as a color option for the Scenic Door Ultimate Sliding Screen.<br>12/18/2017: Added availability of Lock Status Sensor.   |
| 2018     | Ultimate MultiSlide Door | 10/29/2018: Introduced 90° corner configurations in panel design and options same as the standard MultiSlide.   |
| 2019     | Ultimate MultiSlide Door | 4/29/2019: V1194 replaces V1138 (ECN 23234)   |
| 2020     | Ultimate MultiSlide Door | 4/27/2020: Scenic Door Ultimate Sliding Screen transitions to the SE4 Retractable Screen.   |
| 2021     | Ultimate MultiSlide Door | 12/13/2021: A new Sliding Door Automatic Control (SDAC) system will be available on Ultimate and Modern multi-slide door products with the OMS version 3.12 on December 13, 2021. See Product Bulletin #805 for more information and Product Bulletin #836 for installation requirements. |
| 2023     | Ultimate MultiSlide Door | 10/30/2023: An ERS coating became available as a standard option for current Triple Pane offerings. See Product Bulletin 904 for more details.  |
| 2024     | Ultimate MultiSlide Door | 8/26/2024: The Scenic Retractable Screen is now available up to Nominal 12 ft height. See Product Bulletin 944 for more information.  |



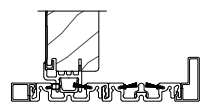
Head Jamb and Sill



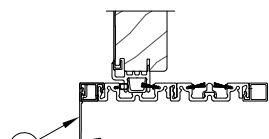
Head Jamb and Sill



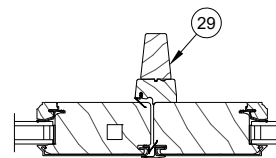
Jamb



Performance Sill Option

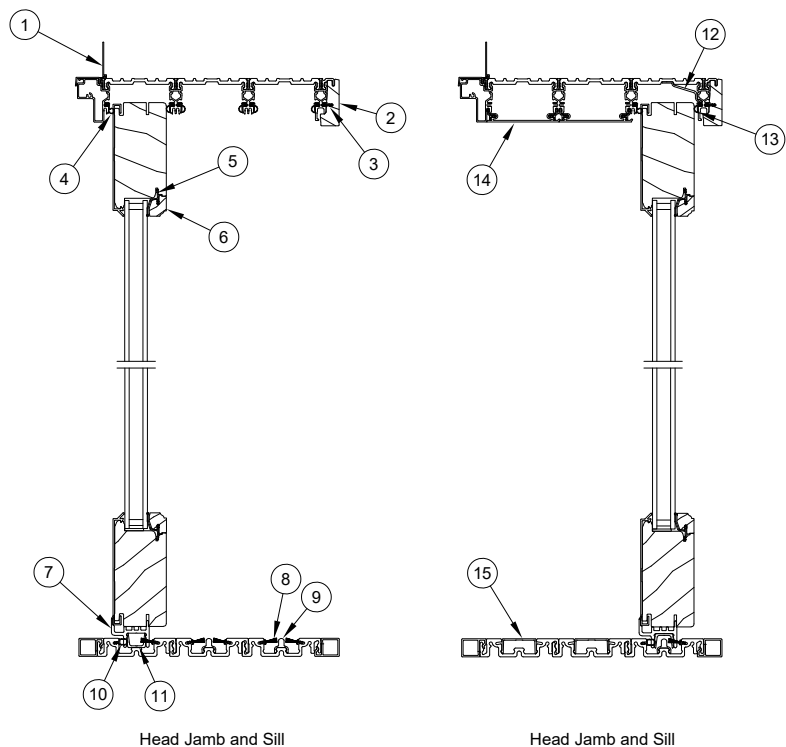


Hi Performance Sill Option



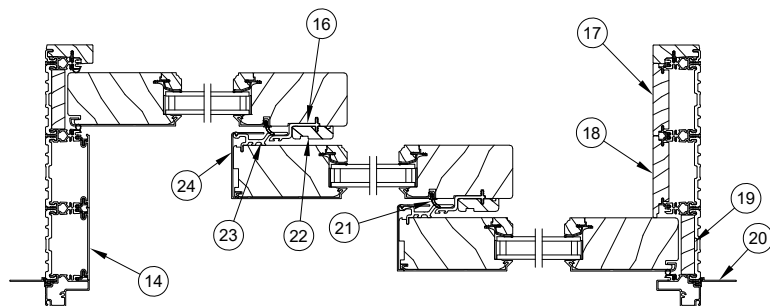
High Performance Jamb

- |   |  |   |
|---|--|---|
| 1. Head Jamb Nailing Fin/Drip Cap, V119 | 11. Panel Leveling Block, A2810                | 21. Mull Casing Base Weather Strip, V2534         |
| 2. Frame Weather Strip, V2475           | 12. Head Jamb Structural Clip, A2875           | 22. Jamb Filler, W12416                           |
| 3. Interior Frame Liner, W12330         | 13. Head Jamb Weather Strip, V2977             | 23. Interlocking Stile Weather Strip, V1194       |
| 4. Connecting Barb, V803                | 14. Modular Part Stop, A2730                   | 24. Exterior Astragal, A2752                      |
| 5. Vinyl Glazing Bead, V2447            | 15. Sill Track Cover, A2736                    | 25. Exterior Interlock, V2488                     |
| 6. Ogee Glazing Cap, W12367             | 16. Sill Liner Nosing, HP, A2863               | 26. Exterior Interlocking Stile Edge Cover, A2802 |
| 7. Panel Shoe, V2492                    | 17. Exterior Stationary Jamb Part Stop, W12359 | 27. Interior Interlock Cover, W12337              |
| 8. Pile Weather Strip, V2493            | 18. Interior Interlock, V2423                  | 28. Jamb Nailing Fin, V104                        |
| 9. Roller Track, V2426                  | 19. Mull Casing, W1450                         | 29. Mull Casing, HP, W11040                       |
| 10. Sill Bulb Weather Strip, V2564      | 20. Mull Casing Base, W1455                    |   |



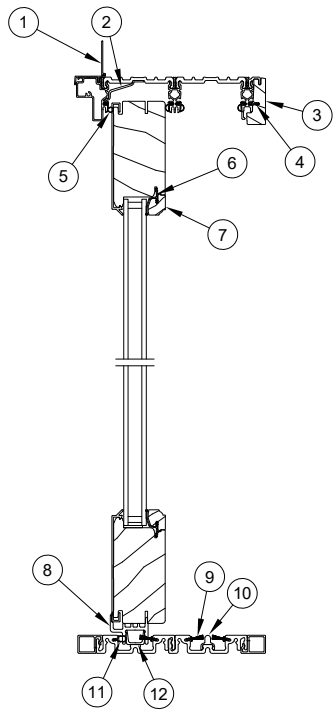
Head Jamb and Sill

Head Jamb and Sill

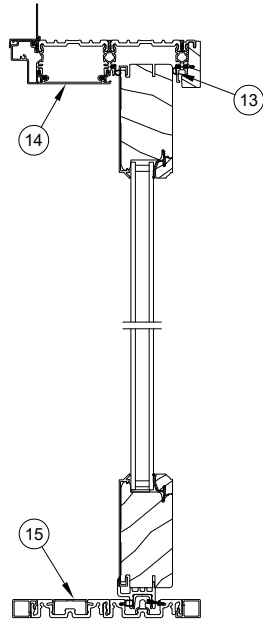


Jamb

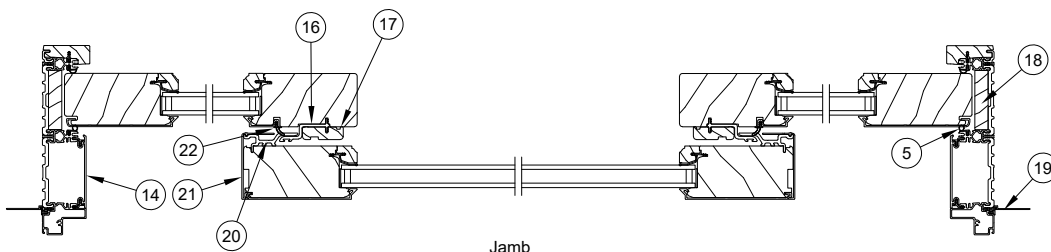
1. Head Jamb Nailing Fin/Drip Cap, V119
2. Interior Frame Liner, W12330
3. Connecting Barb, V803
4. Frame Weather Strip, V2475
5. Vinyl Glazing Bead, V2447
6. Ogee Glazing Cap, W12367
7. Panel Shoe, V2492
8. Pile Weather Strip, V2493
9. Roller Track, V2426
10. Sill Bulb Weather Strip, V2564
11. Panel Leveling Block, A2810
12. Head Jamb Structural Clip, A2875
13. Frame Weather Strip, V2977
14. Modular Part Stop, A2730
15. Sill Track Cover, A2736
16. Interior Interlock, V2423
17. Stationary Jamb Part Stop, W12340
18. Exterior Stationary Jamb Part Stop, W12359
19. Jamb Filler, W12416
20. Jamb Nailing Fin, V104
21. Interlocking Stile Weather Strip, V1194
22. Interior Interlock Cover, W12337
23. Exterior Interlock, V2488
24. Exterior Interlocking Stile Edge Cover, A2802



Head Jamb and Sill

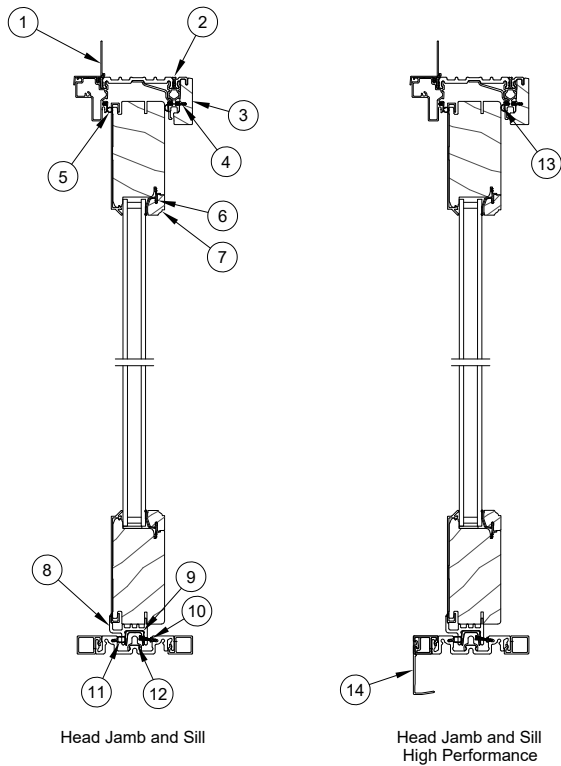


Head Jamb and Sill

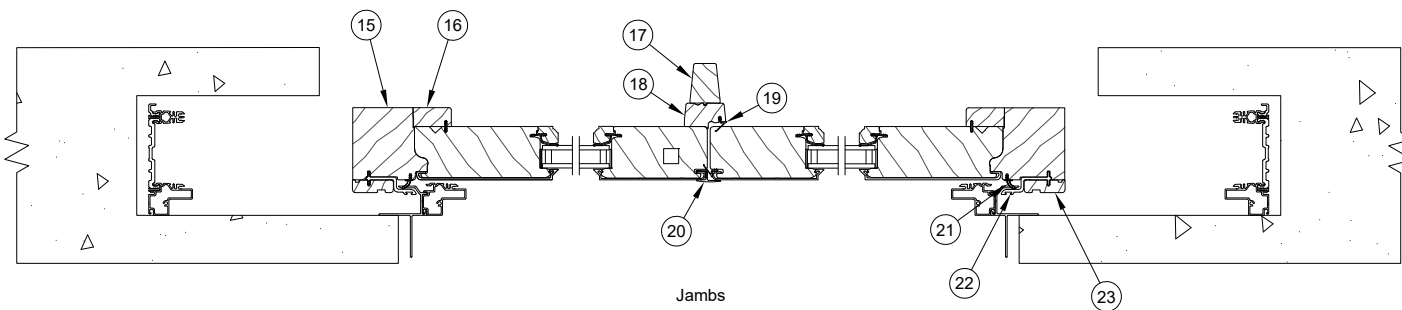


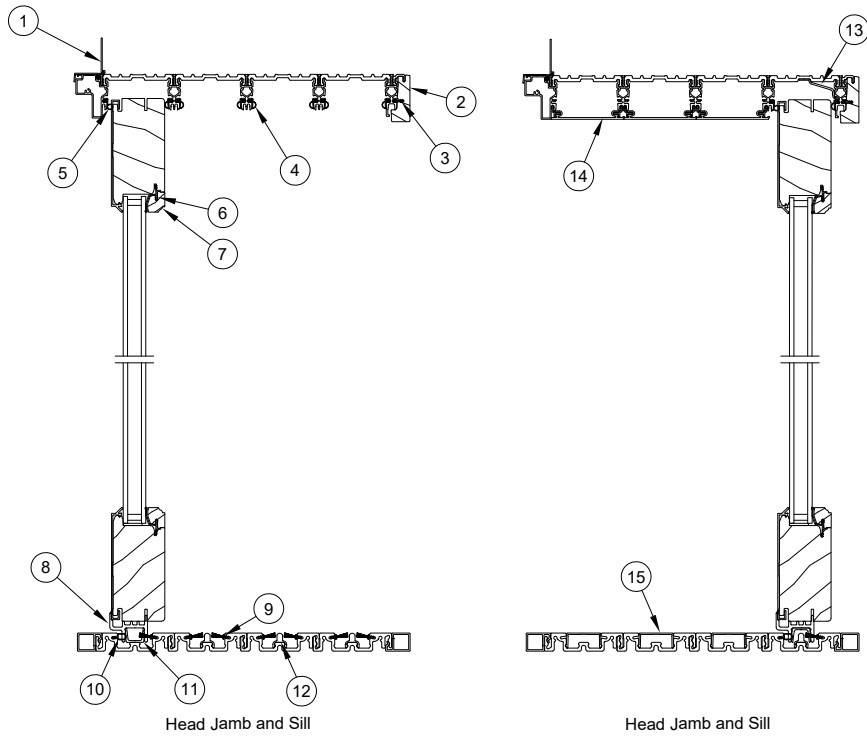
Jamb

1. Head Jamb Nailing Fin/Drip Cap, V119
2. Head Jamb Structural Clip, A2875
3. Interior Frame Liner, W12330
4. Connecting Barb, V803
5. Frame Weather Strip, V2475
6. Vinyl Glazing Bead, V2447
7. Ogee Glazing Cap, W12367
8. Panel Shoe, V2492
9. Pile Weather Strip, V2493
10. Roller Track, V2426
11. Sill Bulb Weather Strip, V2564
12. Panel Leveling Block, A2810
13. Frame Weather Strip, V2977
14. Modular Part Stop, A2730
15. Sill Track Cover, A2736
16. Interior Interlock, V2423
17. Interior Interlock Cover, W12337
18. Jamb Filler, W12416
19. Jamb Nailing Fin, V104
20. Exterior Interlock, V2488
21. Exterior Interlocking Stile Edge Cover, A2802
22. Interlocking Stile Weather Strip, V1194

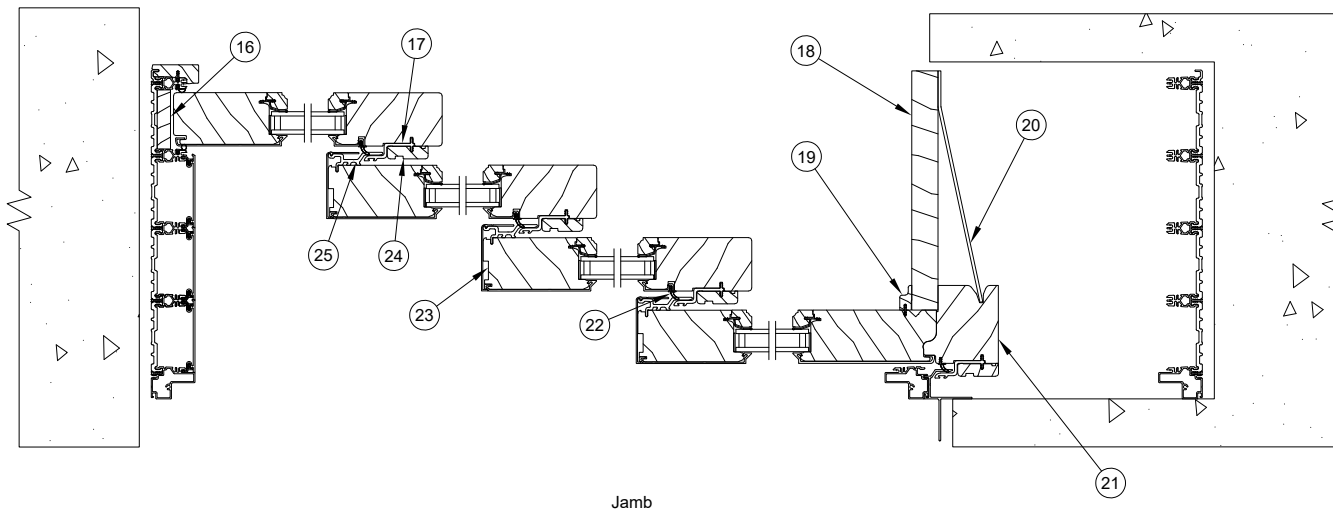


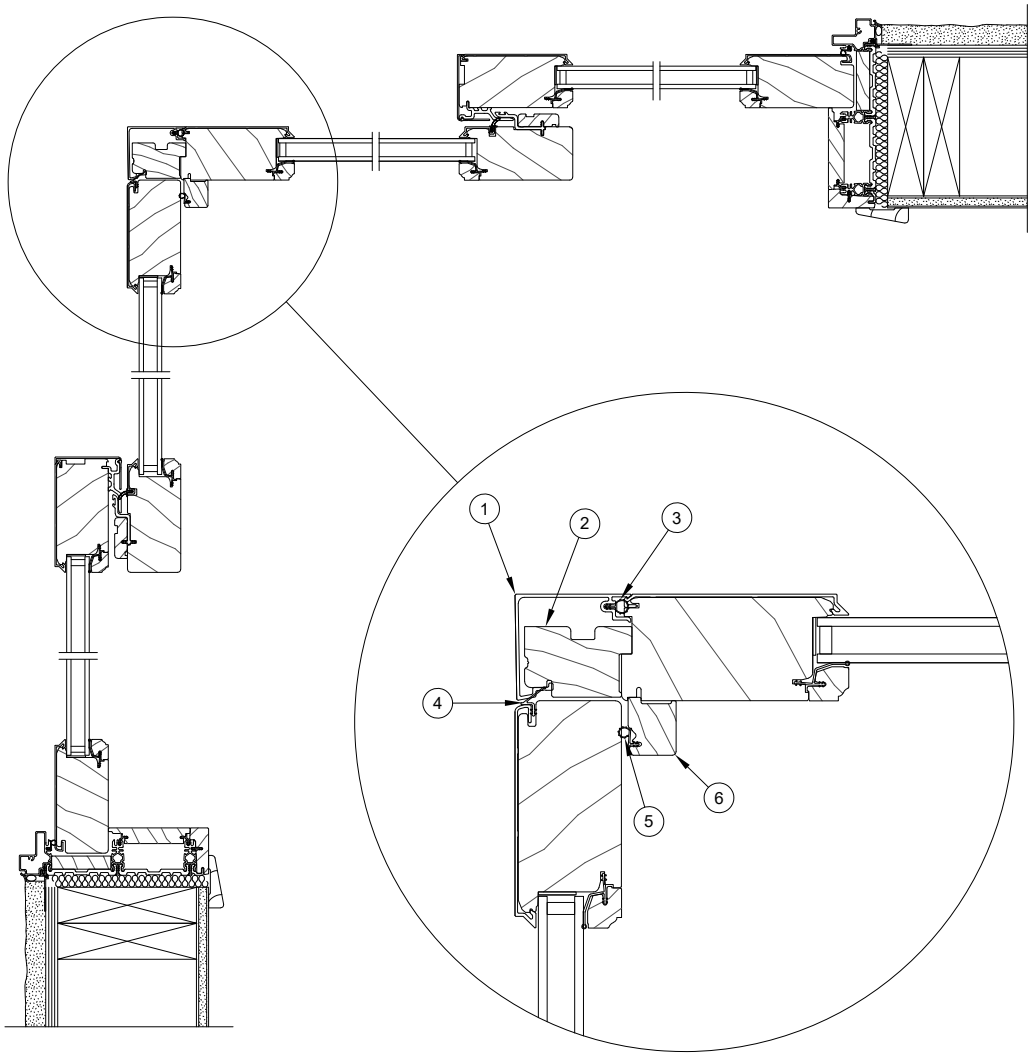
1. Head Jamb Nailing Fin / Drip Cap, V119
2. Head Jamb Structural Clip, A2875
3. Interior Frame Liner, W12330
4. Connecting Barb, V803
5. Frame Weather Strip, V2475
6. Vinyl Glazing Bead, V2447
7. Ogee Glazing Cap, W12367
8. Panel Shoe, V2492
9. Leveling Block, A2810
10. Pile Weather Strip, V2493
11. Sill Bulb Weather Strip, V2564
12. Roller Track, V2426
13. Frame Weather Strip, V2977
14. Sill Liner Nosing, HP
15. Pocket Interlock Support Block, W12387
16. Pocket Stile Cover, W12398
17. Mull Casing, W1450
18. Mull Casing Base, W1455
19. Mull Casing Base Weather Strip, V2534
20. Exterior Astragal, A2752
21. Interlocking Stile Weather Strip, V1194
22. Interior Interlock, V2423
23. Interior Interlock Cover, W12337





1. Head Jamb Nailing Fin / Drip Cap, V119
2. Interior Frame Liner, W12330
3. Connecting Barb, V803
4. Frame Weather Strip, V2977
5. Frame Weather Strip, V2475
6. Vinyl Glazing Bead, V2447
7. Ogee Glazing Cap, W12367
8. Panel Shoe, V2492
9. Pile Weather Strip, V2493
10. Sill Bulb Weather Strip, V2564
11. Leveling Block, A2810
12. Roller Track, V2426
13. Head Jamb Structural Clip, A2875
14. Modular Part Stop, A2730
15. Sill Track Cover, A2736
16. Jamb Filler, W12416
17. Interior Interlock, V2423
18. Pocket Cover, W12401
19. Pocket Stile Trim, W12375
20. Pocket Cover Support Bracket
21. Pocket Panel Support Block, W12387
22. Interlocking Stile Weather Strip, V1194
23. Exterior Interlocking Stile Edge Cover, A2802
24. Interior Interlock Cover, W12337
25. Exterior Interlock, V2488





- 1. Corner Cap, A3268
- 2. Corner Stile, W13056
- 3. Jamb Bulb Weather Strip, V2475
- 4. Mull Weather Strip, V2534
- 5. Corner Cap Weather Strip, V147
- 6. Corner Cover, W13059

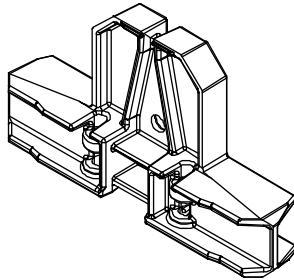


## Performance Sill Liner Splice Key

### Includes:

- 1 - Performance sill liner splice key
- 2 - #8 x 5/8" stainless steel screws

| Color | PN       |
|-------|----------|
| Black | 11102182 |

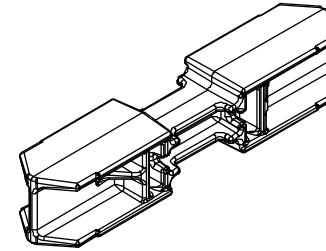


## Flush Sill Liner Splice Key

### Includes:

- 1 - Flush sill liner splice key
- 2 - #8 x 5/8" stainless steel screws

| Color | PN       |
|-------|----------|
| Black | 11102183 |

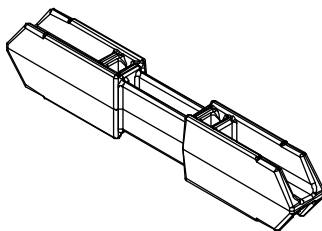


## High Performance Sill Liner Splice Key

### Includes:

- 1 - HP sill liner splice key
- 2 - #8 x 5/8" stainless steel screws

| Color | PN       |
|-------|----------|
| Black | 11102184 |

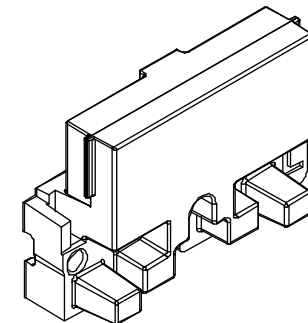


## Sill Corner Key

### Includes:

- 1 - Sill corner key
- 2 - #8 x 5/8" stainless steel screws
- 2 - #8-1 3/4" x 5/8" stainless steel screws

| Handing | Color | PN       |
|---------|-------|----------|
| LH      | Black | 11102185 |
| RH      |       | 11102186 |

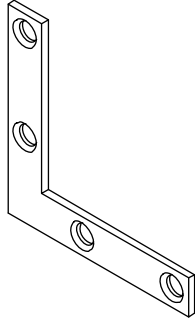


## Sill Corner Key - 90° Corner

### Includes:

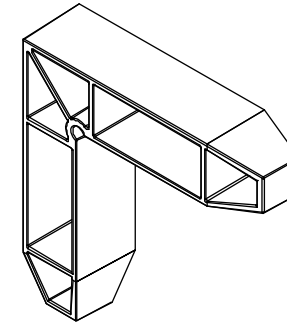
- 1 - L-bracket, flat 2"
- 4 - #8 x 3/8" Phillips head Plastite thread forming screws

| Color           | PN       |
|-----------------|----------|
| Stainless Steel | 11800262 |



## Sill Liner Corner Key - 90° Corner

| Color | PN       |
|-------|----------|
| Black | 11869906 |

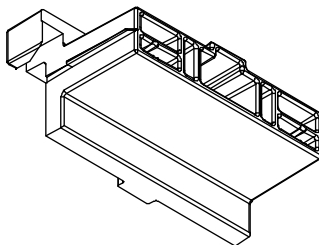


## Head Jamb Corner Key

### Includes:

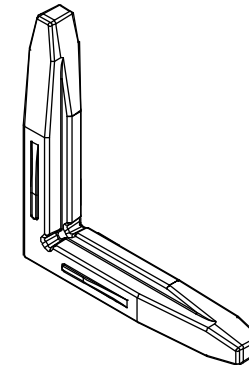
- 1 - Head jamb corner key
- 2 - #8 x 5/8" stainless steel screws
- 2 - #8 x 1 1/4" stainless steel screw

| Color | PN       |
|-------|----------|
| Black | 11869872 |



## Frame Connector Key - 90° Corner

| Color | PN       |
|-------|----------|
| Black | 11869905 |

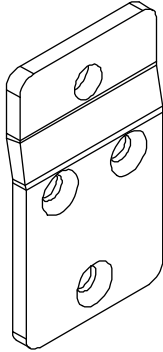


## Panel Bumper Retainer

### Includes:

- 1 - Panel bumper retainer
- 1 - .625 Rubber bumper
- 3 - #8-15 x 2 1/2" A/TF 2/3 thread screws

| Color  | PN       |
|--------|----------|
| Bronze | 11100320 |

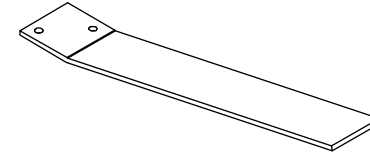


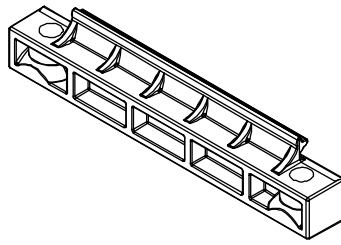
## Pocket Cover Support Bracket

### Includes:

- 1 - Pocket cover support bracket
- 2 - #8-18 x 1" Truss head screws

| Color    | PN       |
|----------|----------|
| Aluminum | 11100322 |





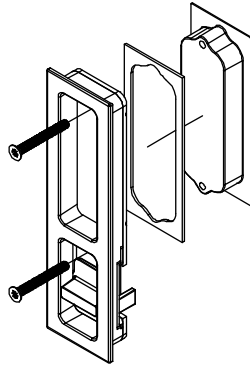
**Sill Splice Key**  
No longer available

## Handle Set, Active

### Includes:

- 1 - Active interior pull
- 1 - Exterior pull
- 1 - Exterior handle gasket
- 2 - M5 x .8 x 40MM, Pozidriv flat head screws

| Color            | PN       |
|------------------|----------|
| Bronze PVD       | 11102161 |
| Satin Nickel PVD | 11102162 |
| Matte Black      | 11102215 |

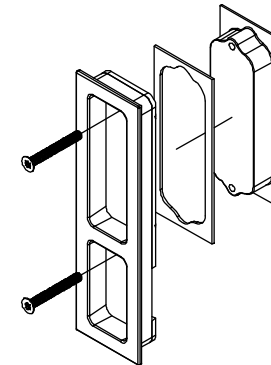


## Handle Set, Inactive

### Includes:

- 1 - Inactive interior pull
- 1 - Exterior pull
- 1 - Exterior handle gasket
- 2 - M5 x .8 x 40MM, Pozidriv flat head screws

| Color            | PN       |
|------------------|----------|
| Bronze PVD       | 11102158 |
| Satin Nickel PVD | 11102159 |
| Matte Black      | 11102216 |

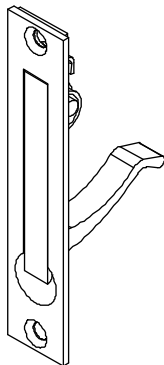


## Edge Pull Kit - Pocketing Units

### Includes:

- 1 - Edge pull
- 2 - #8-18 x 3" Type AB full thread screws

| Color        | PN       |
|--------------|----------|
| Satin Chrome | 11100314 |

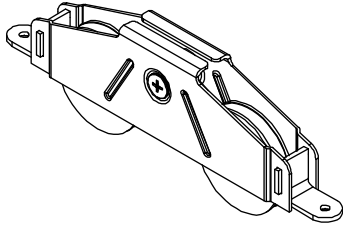


## Adjustable Roller Kit

### Includes:

- 1 - Roller
- 2 - #8 -15 x 1 1/2" A/TF 2/3 thread screws

| Color           | PN       |
|-----------------|----------|
| Stainless Steel | 11100319 |

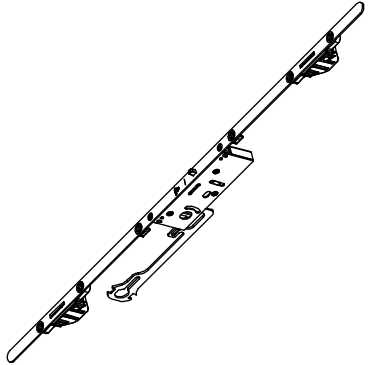


## Multi-Point Lock Kit

### Includes:

- 1 - Multi-point lock
- 6 - #7-19 x 1 1/2" AB full thread screws

| Color           | PN       |
|-----------------|----------|
| Stainless Steel | 11100325 |

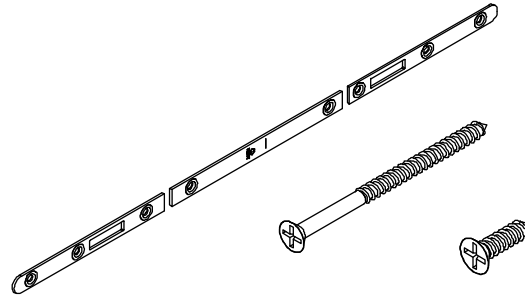


## Jamb Strike Package

### Includes:

- 1 - Strike
- 4 - #8-15 x 2 1/2" A/TF 2/3 thread screws
- 4 - #8-18 x 5/8" AB-17 full thread screws

| Color           | PN       |
|-----------------|----------|
| Stainless Steel | 11100316 |

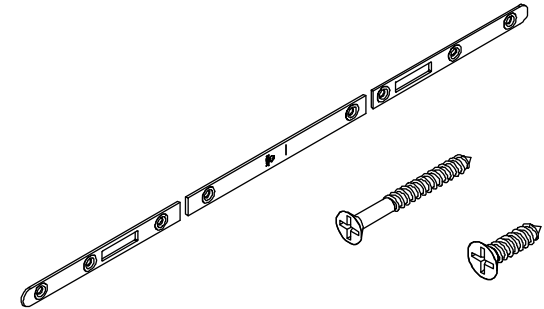


## Panel Strike Kit Package

### Includes:

- 1 - Strike
- 4 - #8-15 x 1 1/2" A/TF 2/3 thread screws
- 4 - #8-18 x 5/8" AB-17 full thread screws

| Color           | PN       |
|-----------------|----------|
| Stainless Steel | 11100317 |

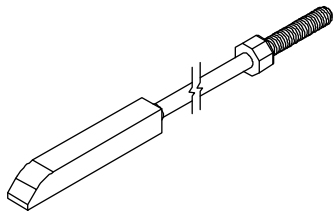


## Locking Rod/Shoot Bolt Assembly

### Includes:

- 1 - Locking rod with end bolt

| Height                               | Top Locking Rod Length | Color           | PN       |
|--------------------------------------|------------------------|-----------------|----------|
| CN 7-0                               | 11"                    | Stainless Steel | 05700180 |
| CN 8-0                               | 20 1/2"                |                 | 11102167 |
| *All other lengths must be specified |                        |                 |          |



## Shoot Bolt Guide

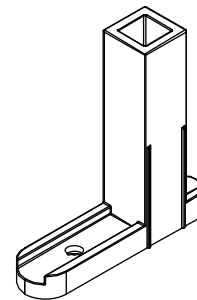
### Includes:

- 1 - Flush bolt guide
- 1 - #8 x 1 1/2" Phillips, pan head, stainless steel screw

### Usage dates:

Active panels-with Multi-Point, Inactive panels - all

| PN       |
|----------|
| 10815199 |

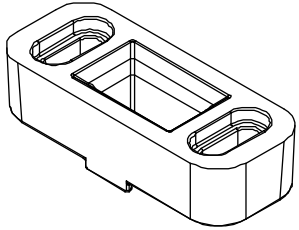


## Flush Bolt Strike Kit

### Includes:

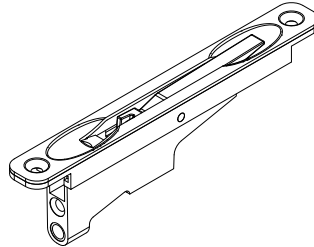
- 1 - Flush bolt strike block
- 2 - #8-18 x 3" Type AB full thread screws

| Color | PN       |
|-------|----------|
| Black | 11100323 |



## Head Flush Bolt, Inactive Panel

| Color | PN       |
|-------|----------|
| Black | 11101780 |

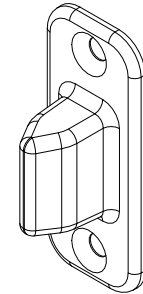


## Panel Alignment Bolt

### Includes:

- 1 - Panel alignment bolt
- 2 - #8-15 x 1 1/2" Type A, TF, 2/3 thread, flat head, stainless steel screw

| Color | PN       |
|-------|----------|
| Black | 11102222 |
| Beige | 11102223 |

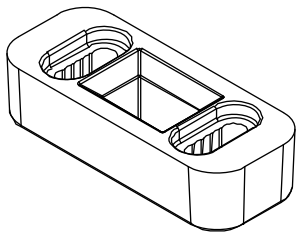


## Shoot Bolt Strike Kit, 90° Corner

### Includes:

- 1 - Shoot bolt strike block
- 2 - #8-18 x 3" Type AB full thread screws

| Color | PN       |
|-------|----------|
| Black | 11800264 |

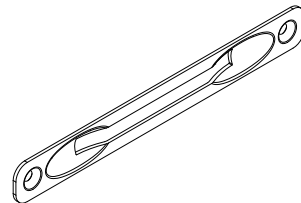


## Cover Plate for Flush Bolt

### Includes:

- 1 - Cover plate
- 2 - #8 x 1" stainless steel screw

| Color          | PN       |
|----------------|----------|
| Brushed Chrome | 11101786 |

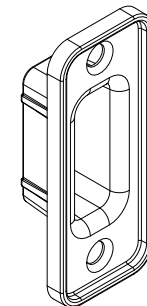


## Panel Alignment Receiver

### Includes:

- 1 - Panel alignment receiver
- 2 - #8-18x 1" Type AB, flat head screws

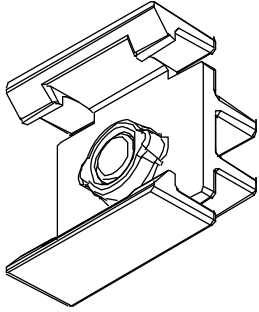
| Color | PN       |
|-------|----------|
| Black | 11102224 |
| Beige | 11102225 |





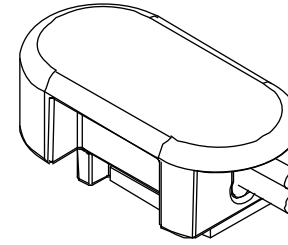
## Housing Assembly, Magnet, MPS

| Color | PN       |
|-------|----------|
| Black | 10501848 |



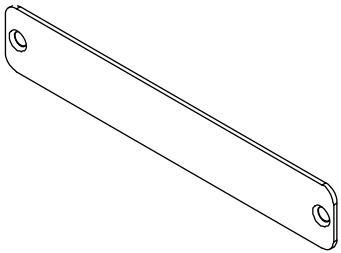
## Reed Capsule

| Color | PN       |
|-------|----------|
| Black | 10501846 |



## Transmitter Cover

| Color                   | PN       |
|-------------------------|----------|
| Brushed Stainless Steel | 10501822 |

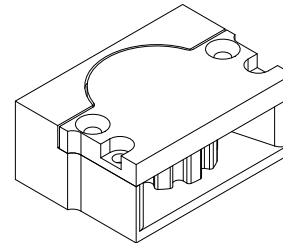


## Pulley Corner Key

### Includes:

- 1 - Bracket
- 4 - #8-15 x 3" type A/TF, 2/3 thread screw

| PN       |
|----------|
| 10502028 |

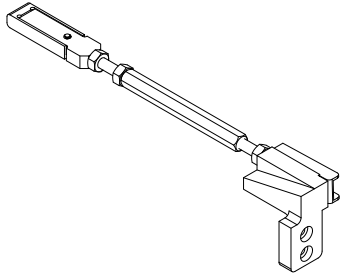


## Turnbuckle Assembly

### Includes:

- 1 - Turnbuckle
- 2 - #8x18 x 1 3/4" full thread pan head screw

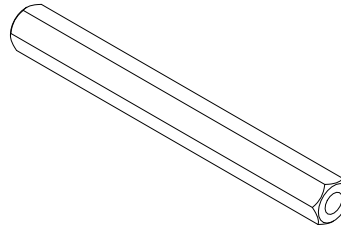
| Handing | PN       |
|---------|----------|
| LH      | 10502022 |
| RH      | 10502023 |



LH shown

## Turnbuckle Barrel

| Length | PN       |
|--------|----------|
| 4"     | 15007628 |
| 10"    | 10507629 |

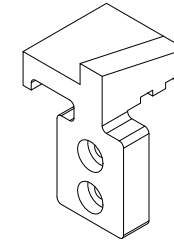


## Bi-Parting Belt Clamp

### Includes:

- 1 - Bracket
- 2 - #8x18 x 1 3/4" full thread pan head screw

| Handing | PN       |
|---------|----------|
| LH      | 10502026 |
| RH      | 10502027 |



RH shown

## Motor

| Model   | PN       |
|---------|----------|
| Everest | 10501232 |
| Peak    | 10501233 |



## Control Box

(Configurable to Motor)

| PN       |
|----------|
| 10501234 |



## C13 18" Power Cord

| PN       |
|----------|
| 10501261 |

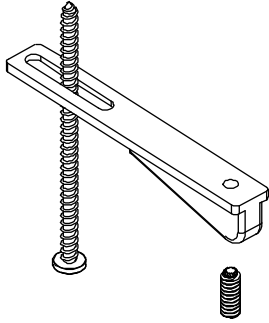
No illustration available

## Closing Ramp Assembly

### Includes:

- 1 - Bracket
- 2 - #8-18 x 3" type AB, Phillips head, full thread screw

| PN       |
|----------|
| 10501304 |



## Exterior Wall Switch

| Color | PN       |
|-------|----------|
| Black | 10501257 |
| White | 10501256 |



## Interior Wall Switch

| PN       |
|----------|
| 10501258 |



## T1 Sensor

| PN       |
|----------|
| 10501249 |



## H1 Sensor

| PN       |
|----------|
| 10501311 |



## Android/IOS Bluetooth Module

| PN       |
|----------|
| 10501309 |



## Voice Command Module

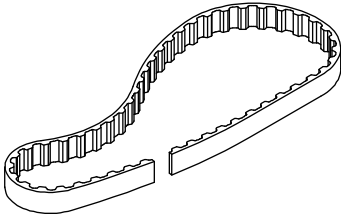
| PN       |
|----------|
| 10501310 |



## Belt

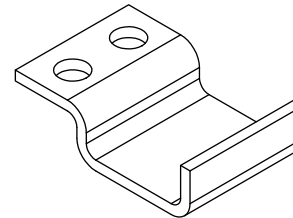
NOTE: Order by foot - belt calculation is frame width x 2 + 4'

| Color | PN       |
|-------|----------|
| Black | 10501271 |



## Belt Clip

| Color | PN       |
|-------|----------|
| Black | 10501208 |



NOTE: The following cables are required, and should be locally sourced for purchase.

### **Communication Cables**

Shielded Cat5e cable with shielded RJ45 connections

### **Motor Power Cable**

Shielded Stranded 14-2 Cable

## Stationary Panel Bracket Package

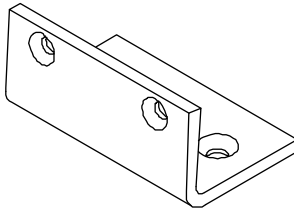
### Includes:

- 1 - Stationary bracket
- 2 - #8-15 x 2 1/2" A/TF 2/3 thread screws
- 1 - #8 x 7/8" screw
- 2 - #6 x 1 1/2" screws

### Usage dates:

Uni-Directional and Bi-Parting

| Color    | PN       |
|----------|----------|
| Aluminum | 11102190 |

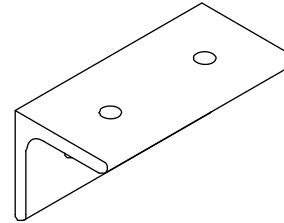


## Unequal Header Bracket - 90° Corner Package

### Includes:

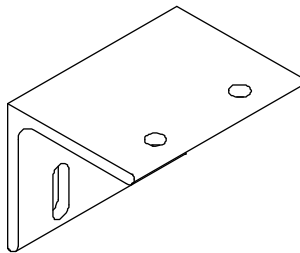
- 1 - Unequal header bracket
- 2 - #8 x 3/8" Phillips thread forming screws
- 2 - #7-19 x 1/2" Type AB Tek-2 full thread, stainless steel, flat head screws

| PN       |
|----------|
| 11800263 |



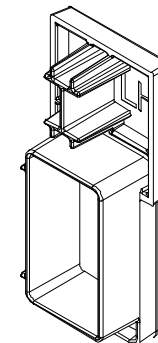
## XOX Head Jamb Stationary Bracket

| Color    | PN       |
|----------|----------|
| Aluminum | 11102178 |



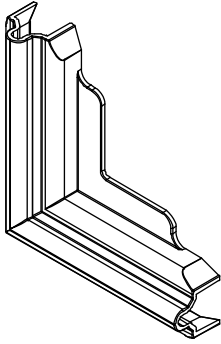
## Nosing End Cap, HP

| Color  | Handing | PN       |
|--------|---------|----------|
| Beige  | RH      | 11102170 |
|        | LH      | 11102171 |
| Bronze | RH      | 11102172 |
|        | LH      | 11102173 |



## Sill Corner Key Cover - 90° Corner

| Color | PN       |
|-------|----------|
| Black | 11869907 |
| Beige | 11869908 |

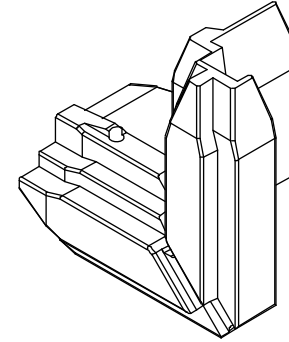


## Head Corner Key Cover - 90° Corner

### Includes:

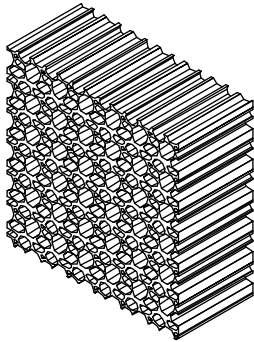
- 1 - Header corner key
- 2 - #8 x 3/8" Phillips head Plastite thread forming screws

| Color | PN       |
|-------|----------|
| Black | 11800261 |



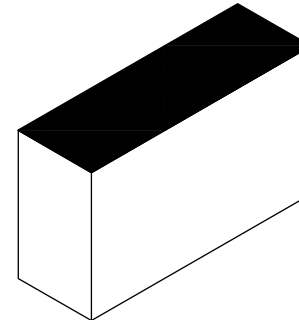
## Sill Drain Filter

| Color | PN       |
|-------|----------|
| Black | 10500240 |



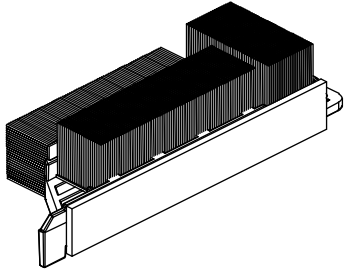
## Header Part Stop Foam Seal

| Color | PN       |
|-------|----------|
| Black | 10500436 |



## Interior Interlock Bottom Seal Assembly

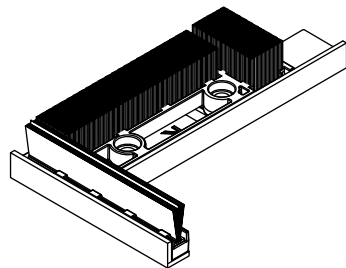
| Handing | PN       |
|---------|----------|
| LH      | 11102255 |
| RH      | 11102256 |



LH part shown

## Exterior Interlock Bottom Seal Assembly

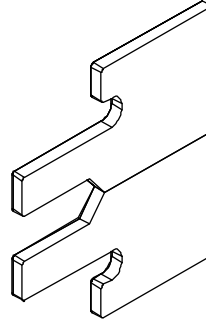
| Handing | PN       |
|---------|----------|
| LH      | 11102257 |
| RH      | 11102258 |



RH part shown

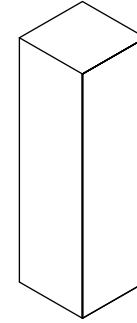
## Pocket Interlock Gasket

| Color | PN       |
|-------|----------|
| Black | 02101079 |



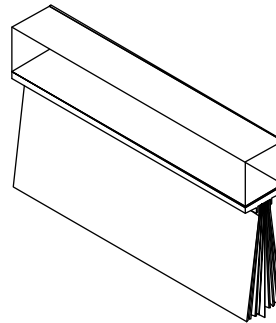
## Sill Seal - 90° Corner

| Color | PN       |
|-------|----------|
| Black | 10500085 |



## Panel Sweep

| Color | PN       |
|-------|----------|
| Black | 11100327 |
| Beige | 11100326 |

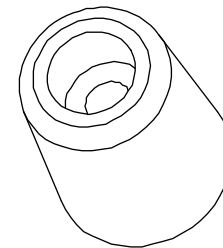


## Stationary Bumper Kit

### Includes:

- 1 - .75 Rubber bumper
- 1 - #6-16 x 1 1/2" AB full thread screw

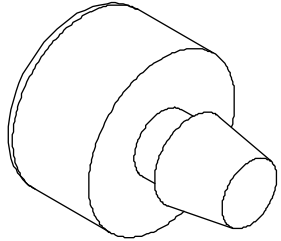
| Color | PN       |
|-------|----------|
| Black | 11100321 |





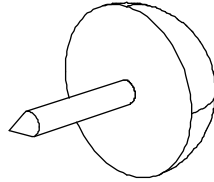
## Rubber Bumper, 5/8"

| Color | PN       |
|-------|----------|
| Black | 02101075 |



## Thumb Tack Bumper

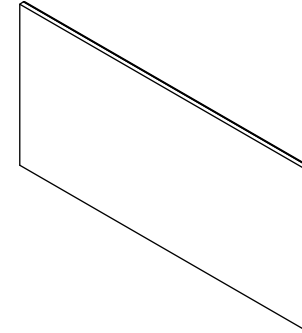
| Color | PN       |
|-------|----------|
| Black | 02101077 |



## Interior Flat Shim

Adhesive backed

| Qty       | PN       |
|-----------|----------|
| Pkg of 20 | 11102180 |

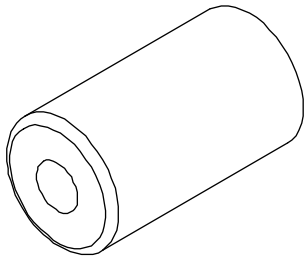


## Pocket Recess Bumper Kit

### Includes:

- 1 - Bumper, pocket jamb
- 1 - #8-18 x 3" AB full thread screw

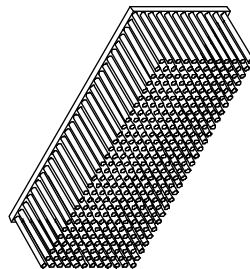
| Color | PN       |
|-------|----------|
| Black | 11100324 |



## Dust Block

Adhesive backed - 1 3/8" x 3/8" x 1/2"

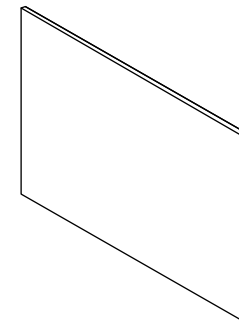
| Color | PN       |
|-------|----------|
| Black | 15600009 |
| Beige | 15600011 |



## Exterior Flat Shim

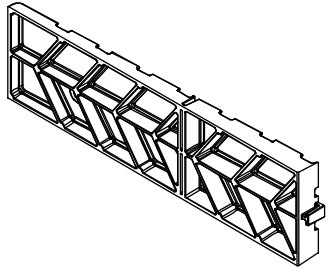
Adhesive backed

| Qty       | PN       |
|-----------|----------|
| Pkg of 20 | 11102179 |



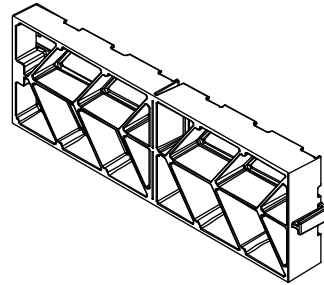
## Interior Counter Shim

| Color | PN       |
|-------|----------|
| Black | 11102175 |



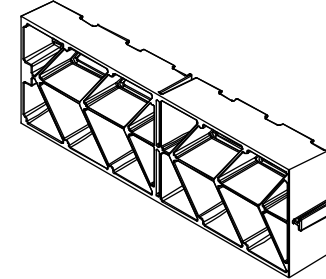
## Middle Counter Shim

| Color | PN       |
|-------|----------|
| Black | 11102174 |



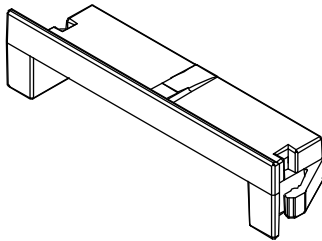
## Exterior Counter Shim

| Color | PN       |
|-------|----------|
| Black | 11102176 |



## Weep Hole Cover

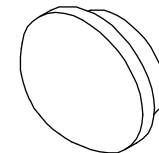
| Color | PN       |
|-------|----------|
| Black | 10501910 |
| Beige | 10501936 |

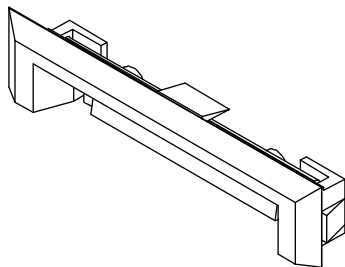


## Roller Adjustment Hole Plug

NOTE: Birch is default, with the option of Cherry or Mahogany

| Finish               | Wood Species |          |          |
|----------------------|--------------|----------|----------|
|                      | Birch        | Cherry   | Mahogany |
| Bare                 | 02074891     | 02074892 | 02074893 |
| Prime                | 11100954     | -        | -        |
| White (PIF)          | 11100937     | -        | -        |
| Designer Black (PIF) | 11100953     | -        | -        |
| Clear                | 00000930     | 11100938 | 11100945 |
| Wheat                | 11100931     | 11100939 | 11100946 |
| Honey                | 11100932     | 11100940 | 11100947 |
| Hazelnut             | 11100933     | 11100941 | 11100948 |
| Leather              | 11100934     | 11100942 | 11100949 |
| Espresso             | 11100935     | 11100943 | 11100950 |
| Cabernet             | 11100936     | 11100944 | 11100951 |



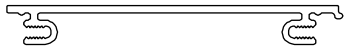


**Weep Hole Cover**

No longer available. Use current part.

**Ordering specifications (use all that apply):**

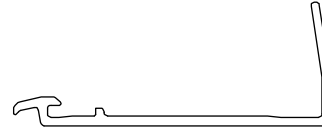
1. Original order number, line number (field calcs information)
2. Profile number
3. Total rough opening
4. Length
5. Handing
6. Color (where applicable)



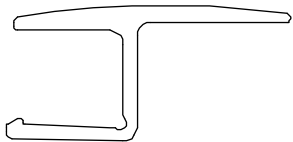
**A2730**  
Modular Part Stop



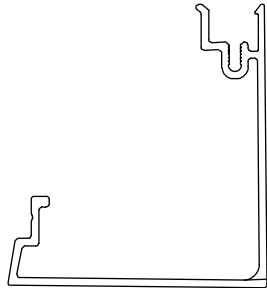
**A2802**  
Exterior Interlocking Stile  
Edge Cover



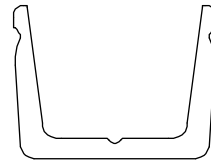
**A2863**  
Sill Liner Nosing - HP



**A2752**  
Exterior Astragal



**A3268**  
Corner Cap



**A2810**  
Stationary Sill Bracket - XOX  
Shoe Reinforcement Leveling  
Block Stationary Panel  
Leveling Block

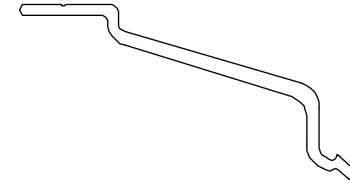


**A2736**  
Sill Track Cover

**Head Jamb Structural Clip**

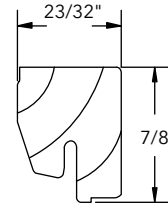
A2875

| Length    | PN       |
|-----------|----------|
| 24" (610) | 18778898 |

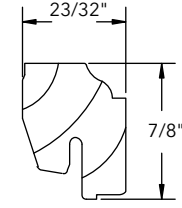


**Ordering specifications (use all that apply):**

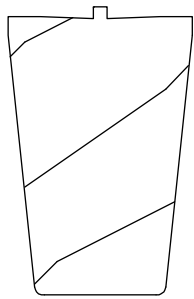
1. Original order number (field calcs information)
2. Profile number
3. Total rough opening
4. Sill type
5. Handing
6. Species
7. Finish (where applicable)



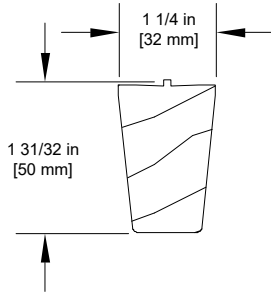
**W12368**  
Square Glazing Cap



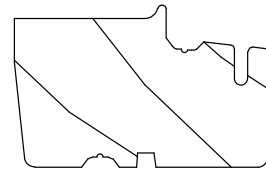
**W12367**  
Ogee Glazing Cap



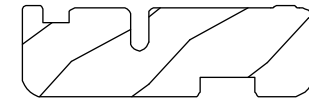
**W1450**  
Mull Casing Cover



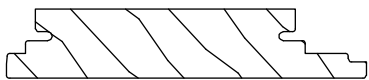
**W11040**  
Mull Casing, HP



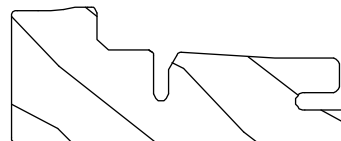
**W1455**  
Mull Casing Base  
Specify left or right hand



**W12337**  
Interior Interlock Cover



**W12359**  
Exterior Stationary Jamb Part Stop  
Specify left or right hand



**W12330**  
Interior Jamb Liner



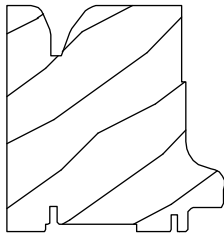
**W12340**  
Stationary Jamb Part Stop



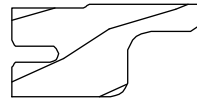
**W12416**  
Jamb Filler

**Ordering specifications (use all that apply):**

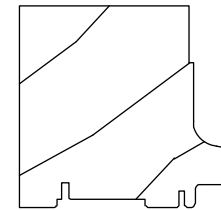
1. Original order number (field calcs information)
2. Profile number
3. Total rough opening
4. Sill type
5. Handing
6. Species
7. Finish (where applicable)



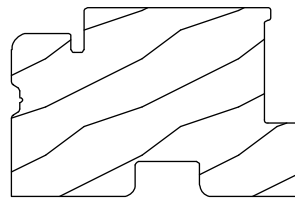
**W12387**  
**Pocket Stile Interlock Support Block**  
Specify left or right hand



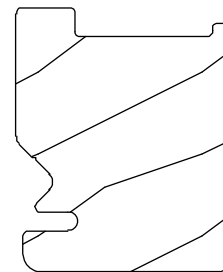
**W12375**  
**Pocket Stile Trim**



**W12516**  
**1 Deep Pocket Interlock Support Block**



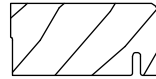
**W13056**  
**Stile Extension 90° Corner**



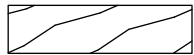
**W13059**  
**90° Corner Cover**

**Ordering specifications (use all that apply):**

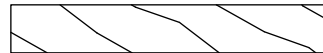
1. Original order number (field calcs information)
2. Profile number
3. Total rough opening
4. Sill type
5. Handing
6. Species
7. Finish (where applicable)



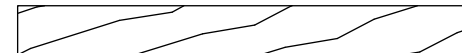
**W12398**  
**1 Deep Pocket Cover**



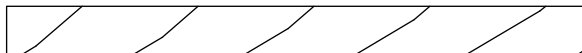
**W12388**  
**2 Deep Pocket Cover**



**W12400**  
**3 Deep Pocket Cover**



**W12401**  
**4 Deep Pocket Cover**



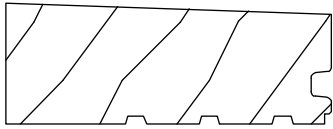
**W12402**  
**5 Deep Pocket Cover**



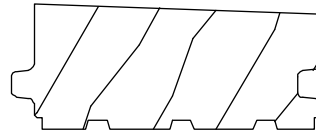
**W12403**  
**6 Deep Pocket Cover**

**Ordering specifications (use all that apply):**

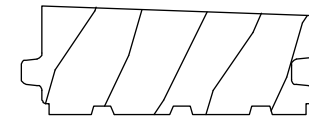
1. Original order number (field calcs information)
2. Profile number
3. Total rough opening
4. Sill type
5. Handing
6. Species
7. Finish (where applicable)



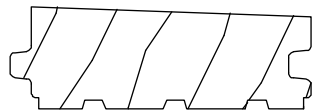
**W12552**  
**1 Track HP Wedge**



**W12553**  
**2 Track HP Wedge**



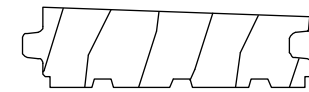
**W12554**  
**3 Track HP Wedge**



**W12582**  
**4 Track HP Wedge**



**W12583**  
**5 Track HP Wedge**



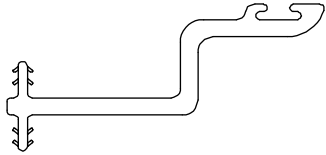
**W12584**  
**6 Track HP Wedge**



## Interior Interlock

V2423

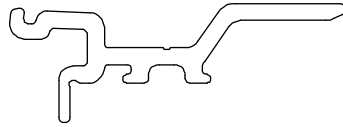
| Length      | Color | PN       |
|-------------|-------|----------|
| 141" (3581) | Black | 15371212 |



## Exterior Interlock

V2488

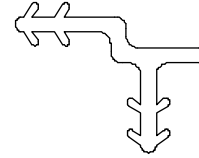
| Length      | Color | PN       |
|-------------|-------|----------|
| 142" (3607) | Black | 11209812 |



## Connecting Barb

V087

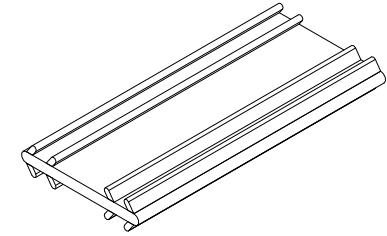
| Length      | Color | PN       |
|-------------|-------|----------|
| 147" (3734) | Beige | 16000604 |



## Connecting Barb

V803

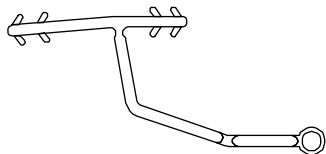
| Length         | PN       |
|----------------|----------|
| Specify Length | 15812999 |



## Glazing Bead

V2447

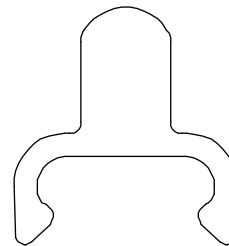
| Length           | Beige PN | Black    |
|------------------|----------|----------|
| 26 13/16" (681)  | 15371330 | 15371331 |
| 38 13/16" (986)  | 15371340 | 15371341 |
| 50 13/16" (1291) | 15371350 | 15371351 |
| 73 1/2" (1867)   | 15371370 | 15371371 |
| 83" (2108)       | 15371380 | 15371381 |
| 95" (2413)       | 15371390 | 15371391 |
| 107" (2718)      | 15371310 | 15371311 |
| 131" (3327)      | 15371312 | 15371313 |



## Roller Track

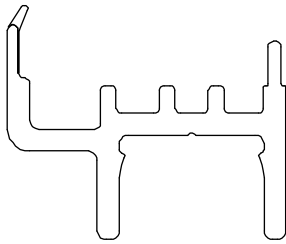
V2426

| Length      | Color | PN       |
|-------------|-------|----------|
| 150" (3810) | Black | 15984899 |
|             | Beige | 15984898 |



**Ordering specifications (use all that apply):**

1. Original order number, if available (field calcs information);
2. Panel type
3. Total rough opening;
4. Profile number;
5. Length;
6. Handing;
7. Color



**V2492**

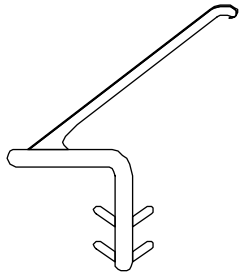
**Shoe, Panel**

(Specify panel type, if applicable)

## Mull Weather Strip

V2534

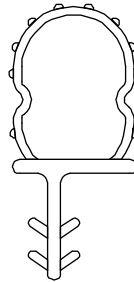
| Length          | Color | PN       |
|-----------------|-------|----------|
| 140 3/4" (3575) | Black | 11210513 |
|                 | Beige | 11210512 |



## Sill Bulb Weather Strip

V2564

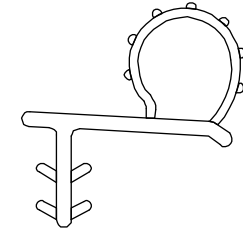
| Length      | Color | PN       |
|-------------|-------|----------|
| 144" (3558) | Black | 11211299 |
|             | Beige | 11211298 |



## Jamb Bulb Weather Strip

V2475

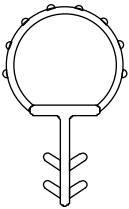
| Length      | Color | PN       |
|-------------|-------|----------|
| 144" (3558) | Black | 11209699 |
|             | Beige | 11209698 |



## Corner Cap, Frame Weather Strip

V147

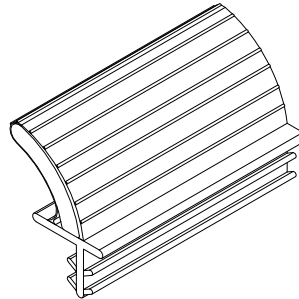
| Length      | Color | PN       |
|-------------|-------|----------|
| 150" (3810) | Black | 17002299 |



## Foam Leaf Interlock Stile Weather Strip

V1194

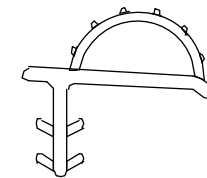
| Length         | Color | PN       |
|----------------|-------|----------|
| Specify Length | Black | 17003596 |
|                | Beige | 17003595 |



## Frame Weather Strip, Head Jamb/Jamb

V2977

| Length      | Color | PN       |
|-------------|-------|----------|
| 200" (5080) | Black | 16219275 |



**Ordering specifications (use all that apply):**

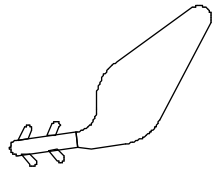
1. Original order & line number, if available (field calcs information);
2. panel type (where applicable)
3. total rough opening;
4. profile number;
5. length;
6. handing;
7. color (where applicable).



**V2493**

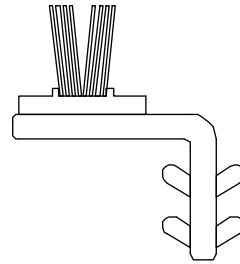
**1/2" Pile Weather Strip**

Specify Black or Beige



**V1138**

No longer available,  
replace with V1194



**V2502**

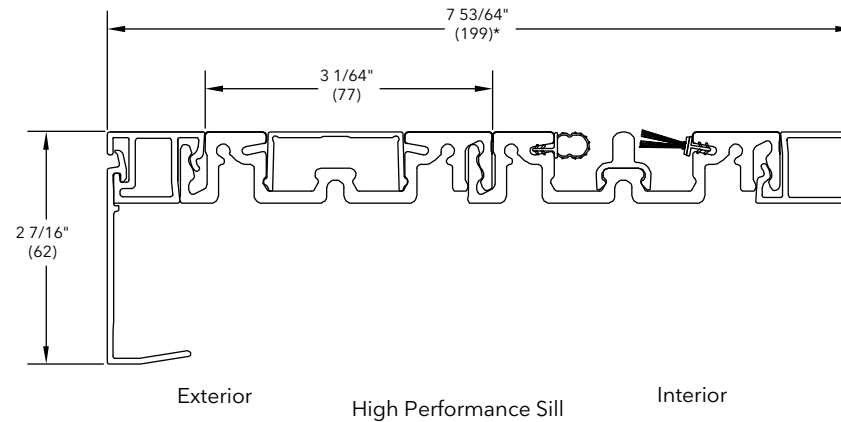
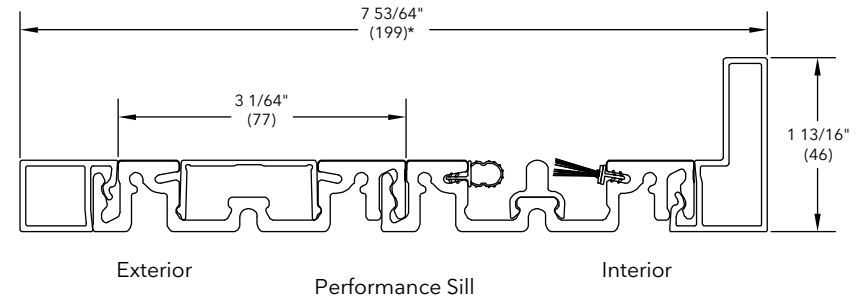
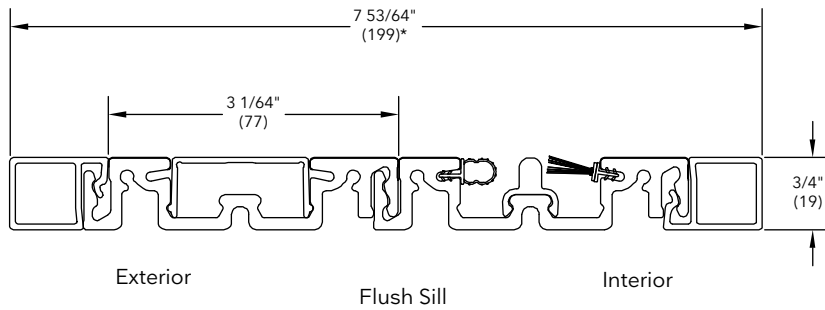
No longer available,  
replace with V2977

## Ordering specifications (use all that apply):

1. Frame OM width or length of sill
2. Handing and configuration
3. Finish
4. Original order number

NOTE: The entire sill assembly will have to be replaced prior to installation. If ordering a different sill color, panel shoes (V2492) must be ordered separately to match sill color.

NOTE: \*Dimension varies base on number of tracks.



## Stacked Door

### Information required to order replacement panels:

NOTE: Specify sill type, (Flush, HP or Performance), and original order number on all orders for replacement panels. Specify interior sticking profile (Ogee or Square). Panels ship complete, minus the options listed below. Handle sets available in Satin Nickel PVD or Bronze PVD. For XOX stationary panels, operator panel width and height or frame OM (width and height) must be provided.

### Primary Active Panel - options

Panel with multi-point lock.

Panel with active trim set (color needed).

If panel interlocks with stationary panel, prep with bumpers.

### Secondary Panel - options

If panel interlocks with stationary panel, prep with bumpers.

### Primary Inactive Panel - options

Panel with strike plate.

Panel with inactive trim set (color needed).

If panel interlocks with stationary panel, prep with bumpers.

### Primary Corner Inactive Panel - options

Panel with strike plate..

Panel with inactive trim set (color needed).

If panel interlocks with stationary panel, prep with bumpers.

### Stationary Panel - no options, panel ships complete

Panel shoe color is determined by the color of the sill:

Black shoe = bronze sill, Beige shoe = beige sill.

## Pocket Door

### Information required to order replacement panels:

NOTE: Specify sill type, (Flush, HP or Performance) on all orders for replacement panels. Specify interior sticking profile (Ogee or Square). Panels ship complete, minus the options listed below. Trim sets available in Satin Nickel PVD or Bronze PVD.

### Primary Active Panel - options

Panel with multi-point lock.

Panel with active trim set (color needed).

If panel interlocks with stationary panel, prep with bumpers.

### Primary Active Pocket Panel - options

Panel with multi-point lock.

Panel with active handle set (color needed).

### Secondary Panel - options

If panel interlocks with pocket panel, prep with bumpers.

### Primary Inactive Panel - options

Panel with strike plate.

Panel with inactive handle set (color needed).

If panel interlocks with pocket panel, prep with bumpers.

### Primary Inactive Pocket Panel - options

Panel with strike plate.

Panel with inactive handle set (color needed).

### Primary Corner Inactive Panel - options

Panel with strike plate..

Panel with inactive handle set (color needed).

If panel interlocks with pocket panel, prep with bumpers.

### Primary Corner Inactive Panel - options







Panel with strike plate..

Panel with inactive handle set (color needed).

### Pocket Panel - no options, panel ships complete

Panel shoe color is determined by the color of the sill:

Black shoe = bronze sill, Beige shoe = beige sill.

|                      |                        | Left Hand Screen   | Right Hand Screen   |
|----------------------|------------------------|--|---|
| <b>Single Screen</b> | <b>Inside Building</b> | <p>Inside</p> <p>P2   P1</p> <hr/> <p>Outside</p>   | <p>Inside</p> <p>P2   P1</p> <hr/> <p>Outside</p> |
| <b>Double Screen</b> | <b>Inside Building</b> | <p>Inside</p> <p>P2   P1</p> <hr/> <p>Outside</p> |   |

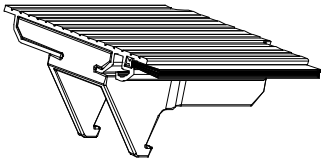


To order full unit sill covers and screen cartridges,  
refer to configured parts in OMS.

## Ordering specifications:

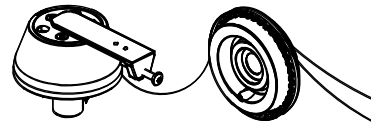
1. Original order number.

NOTE: Single screens: Marvin order number is found under the bottom stile cover on the opposite side of the tensioning springs. Double screens: Marvin order number is found under the bottom left hand stile cover on the opposite side of the tensioning springs (left hand when viewing from exterior).



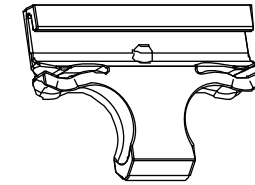
**Sill Cover, Short End**

| Handing | Color          | PN       |
|---------|----------------|----------|
| LH      | Clear Anodized | 10504034 |
|         | Powder Bronze  | 10504044 |
|         | Powder White   | 10504046 |
|         | Powder Black   | 10504048 |
| RH      | Clear Anodized | 10504035 |
|         | Powder Bronze  | 10504045 |
|         | Powder White   | 10504047 |
|         | Powder Black   | 10504049 |



**Cone Assembly**

| Handing | PN       |
|---------|----------|
| LH      | 10504102 |
| RH      | 10504103 |



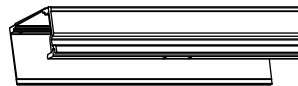
**Screen Stop, Header, Bi-Parting**

| PN       |
|----------|
| 10504106 |

Illustration not available

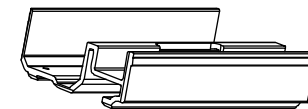
**Cable**

| Color  | PN       |
|--------|----------|
| Black  | 10504098 |
| Red    | 10504099 |
| Yellow | 10504100 |
| Green  | 10504101 |



**Splice Joiner**

| PN       |
|----------|
| 10504139 |

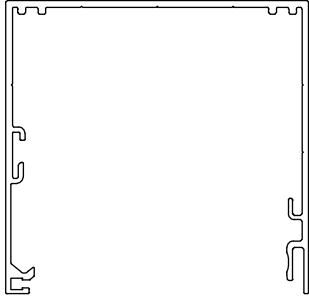


**Splice Joiner, Sill**

| PN       |
|----------|
| 10504175 |

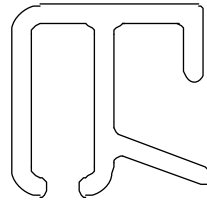
## Ordering specifications:

1. Original order number;
2. Total rough opening;
3. Part length;
4. Handing;
5. Finish (where applicable),



**Head Jamb Frame**  
**Head Jamb Frame, Spliced**

Note: Spliced is available in LH or RH configurations

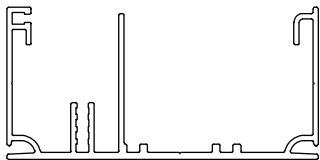


**Tab Retainer, Head Jamb**  
Includes: Retainer clips



**Cover, Head Jamb**  
**Cover, Head Jamb, Spliced**

Includes: Pile weather strip and retainer clips  
Note: Spliced is available in LH or RH configurations.

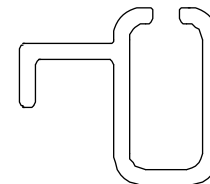


**Sill, Frame**  
**Sill, Spliced**

Note: Spliced is available in LH or RH configurations



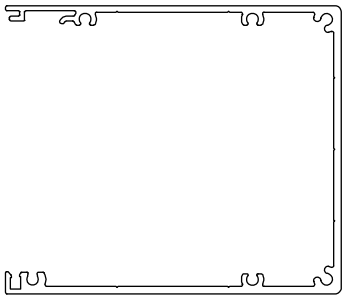
**Sill Cover, Spliced**  
Includes: Pile weather strip and end caps  
Note: Available in LH or RH configurations.



**Tab Retainer, Sill**  
**Tab Retainer, Sill, Spliced**  
Note: Spliced is available in LH or RH configurations.

## Ordering specifications:

1. Original order number;
2. Total rough opening;
3. Part length;
4. Handing;
5. Finish (where applicable),



**Frame, Jamb, No Cartridge**  
**Jamb, Cartridge Side**  
**Jamb, Bi-Parting**

Note: Available in LH or RH configurations



**Jamb Cover, Cartridge**

Includes: Pile weather strip and retainer clips



**Jamb Cover, Stationary**

Includes: Magnets and retainer clips

## Ordering specifications:

1. Original order number;

NOTE: Single screens: Marvin order number is found under the bottom stile cover on the opposite side of the tensioning springs. Double screens: Marvin order number is found under the bottom left hand stile cover on the opposite side of the tensioning springs (left hand when viewing screen from exterior).

## Top Cartridge Bearing

### Includes:

- 1 - Cable tensioner
- 1 - Top block slide pulley/bearing
- 4 - Screws

### Usage dates:

Used prior to 04/27/2020

| Handing | Color | PN       |
|---------|-------|----------|
| LH      | Black | 10501287 |
| RH      | Black | 10501288 |



## Top Handle Pull Assembly

### Includes:

- 1 - Top stile cap
- 2 - Screws/cable crimp

### Usage dates:

Used prior to 04/27/2020

| Handing | Color | PN       |
|---------|-------|----------|
| LH      | Black | 10501291 |
| RH      | Black | 10501292 |



## Bottom Handle Pull Assembly

### Includes:

- 1 - Bottom stile cap
- 2 - Screws/cable crimp

### Usage dates:

Used prior to 04/27/2020

| Handing | Color | PN       |
|---------|-------|----------|
| LH      | Black | 10501289 |
| RH      | Black | 10501290 |



## Ordering specifications:

1. Original order number;

NOTE: Single screens: Marvin order number is found under the bottom stile cover on the opposite side of the tensioning springs. Double screens: Marvin order number is found under the bottom left hand stile cover on the opposite side of the tensioning springs (left hand when viewing screen from exterior).

## Bi-Parting Screen Stop

### Includes:

- 1 - Double screen stop

### Usage dates:

Used prior to 04/27/2020

| Color | PN       |
|-------|----------|
| Black | 10501296 |



## Bottom Cartridge Bearing

### Includes:

- 1 - Bottom bearing/pulley assembly
- 2 - Screws

### Usage dates:

Used prior to 04/27/2020

| Handing | PN       |
|---------|----------|
| LH      | 10501299 |
| RH      | 10501298 |



## Spool Kit

### Includes:

- 1 - LH/RH Cone
- 1 - Cable/crimp
- 1 - Cable connector
- 4 - Screws

NOTE: Ultimate MultiSlide Door will use 13ft (cable) for each cone to connector. Top Cables: width of screen + 1/2 the height. Bottom Cables: 2 times the width of the screen + 1 1/2 times the height

### Usage dates:

Used prior to 04/27/2020

| Length         | Handing | Color | PN       |
|----------------|---------|-------|----------|
| Specify Length | LH      | Black | 10501294 |
|                | RH      | Gray  | 10501293 |



**Ordering specifications:**

1. Original order number;

NOTE: Single screens: Marvin order number is found under the bottom stile cover on the opposite side of the tensioning springs. Double screens: Marvin order number is found under the bottom left hand stile cover on the opposite side of the tensioning springs (left hand when viewing screen from exterior).

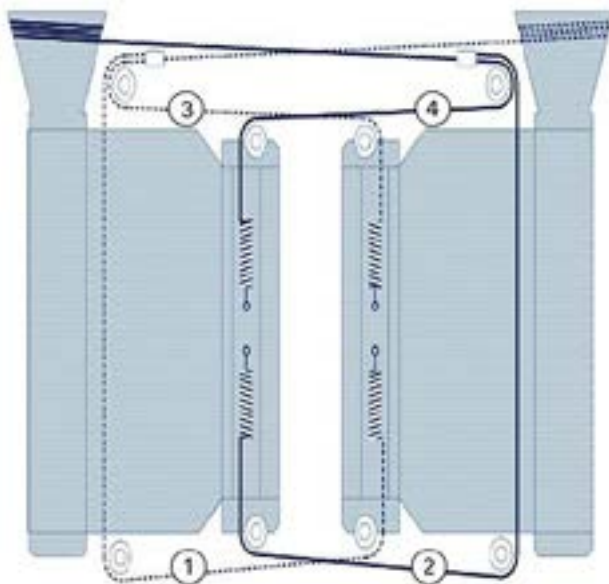
**Cable**

NOTE: Ultimate Multislide Door will use 13ft (cable) for each cone to connector.  
 Top Cables: width of screen + 1/2 the height. Bottom Cables: 2 times the width of the screen + 1 1/2 times the height. See illustration below for location/configuration of top and bottom cables. Top cables are indicated as 3 and 4, bottom cables are indicated as 1 and 2.

**Usage dates:**

Used prior to 04/27/2020

| Length         | PN       |
|----------------|----------|
| Specify Length | 10501259 |



**Handle Pull Covers/Spring Kit**

**Includes:**

- 4 - Stile covers
- 2 - Springs
- 4 - Spring keepers

**Usage dates:**

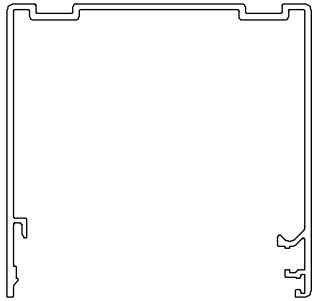
Used prior to 04/27/2020

| PN       |
|----------|
| 10501297 |



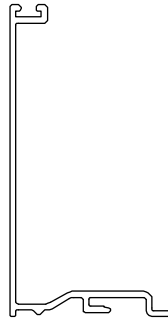
## Ordering specifications:

1. Original order number;
2. Total rough opening;
3. Part length;
4. Handing;
5. Finish (where applicable),



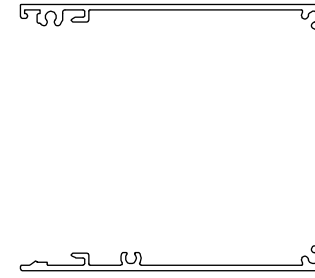
### Head Jamb Frame

Includes: Weather strip  
Used prior to 04/27/2020



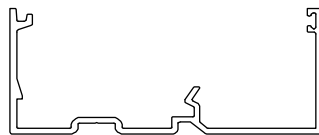
### Head Jamb/Jamb Cover

Includes: Weather strip  
Used prior to 04/27/2020



### Jamb Frame

Includes weather strip  
Used prior to 04/27/2020



### Sill

Includes: Weather strip  
Used prior to 04/27/2020

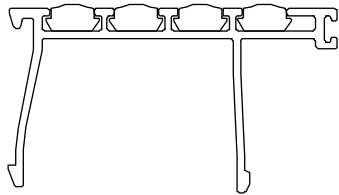


### Jamb Stop

Includes magnet strip  
Used prior to 04/27/2020



The following parts are available as configured parts in OMS



**Sill Cover with Rubber Insert**  
Includes weather strip  
Used prior to 04/27/2020



**Cartridge**  
1 Complete cartridge assembly  
Used prior to 04/27/2020